

Hereford Mews, Notting Hill W2



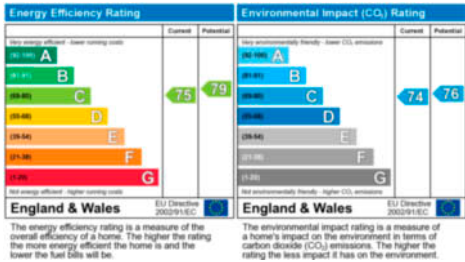
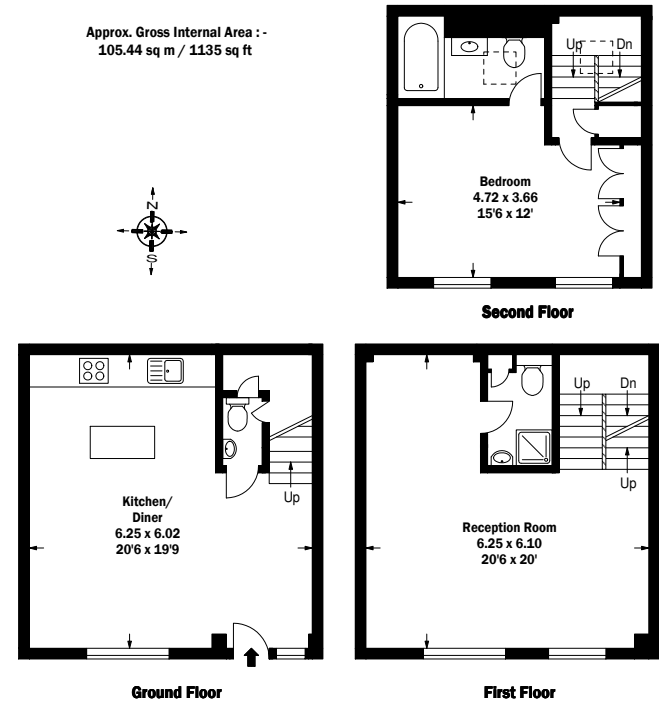
BECTIVE
LESLIE
MARSH

A stunning mews house (105 sq m/1,135 sq ft approx.) in this quiet enclave just off Westbourne Grove. The property is presented in immaculate order and features a large open plan kitchen/diner occupying the entire ground floor. The first floor offers a stylish, bright reception room with an impressive master suite above.

Hereford Mews is superbly located moments from the very best boutiques, bars and eateries found along Westbourne Grove.

Bedroom, 2 bathrooms (1 en suite), cloakroom, reception room, open plan reception room/kitchen.

Freehold **£1,295,000**



**BECTIVE
LESLIE
MARSH**

020 7221 4805
205 Westbourne Grove W11 2SB
www.bectivelesliemarsh.co.uk