

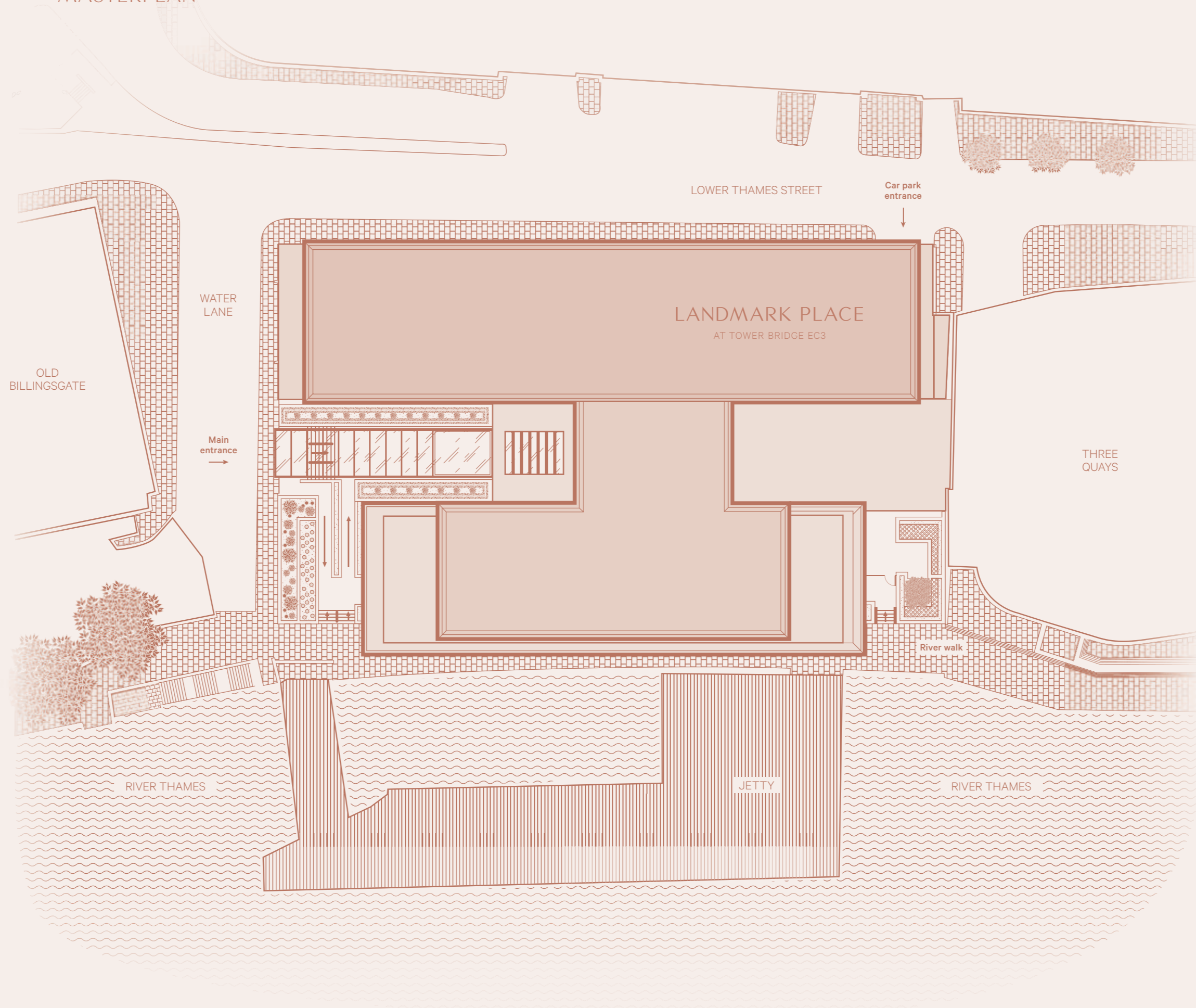
LANDMARK PLACE IS A BUILDING OF SUBSTANCE: ELEGANT, REFINED, AND ENTIRELY SUITED TO ITS ICONIC POSITION. A LANDMARK IN DESIGN, IN LOCATION, AND IN LONDON'S CONTINUING STORY.

LOCATION

LANDMARK PLACE

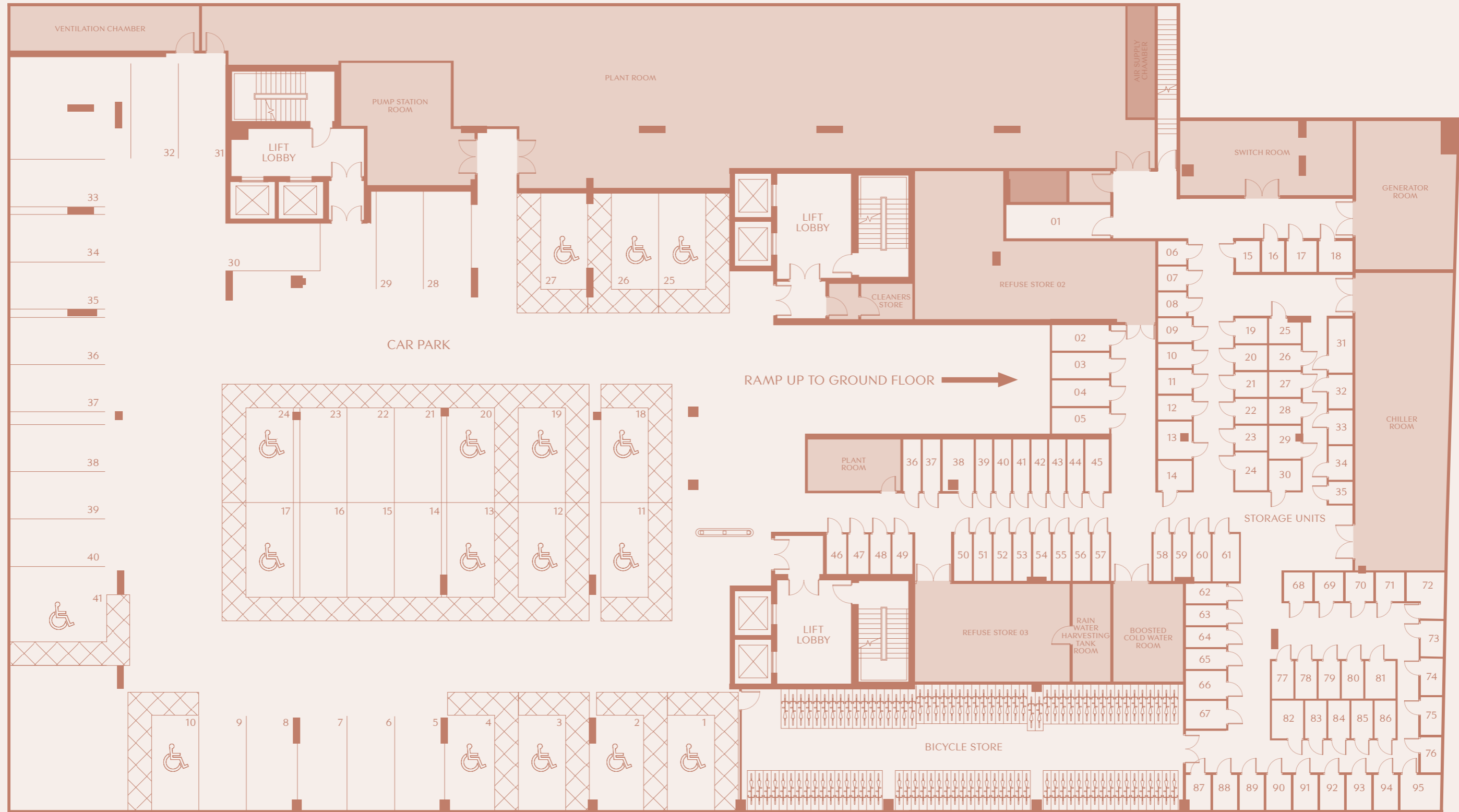
MASTERPLAN

4
|
5



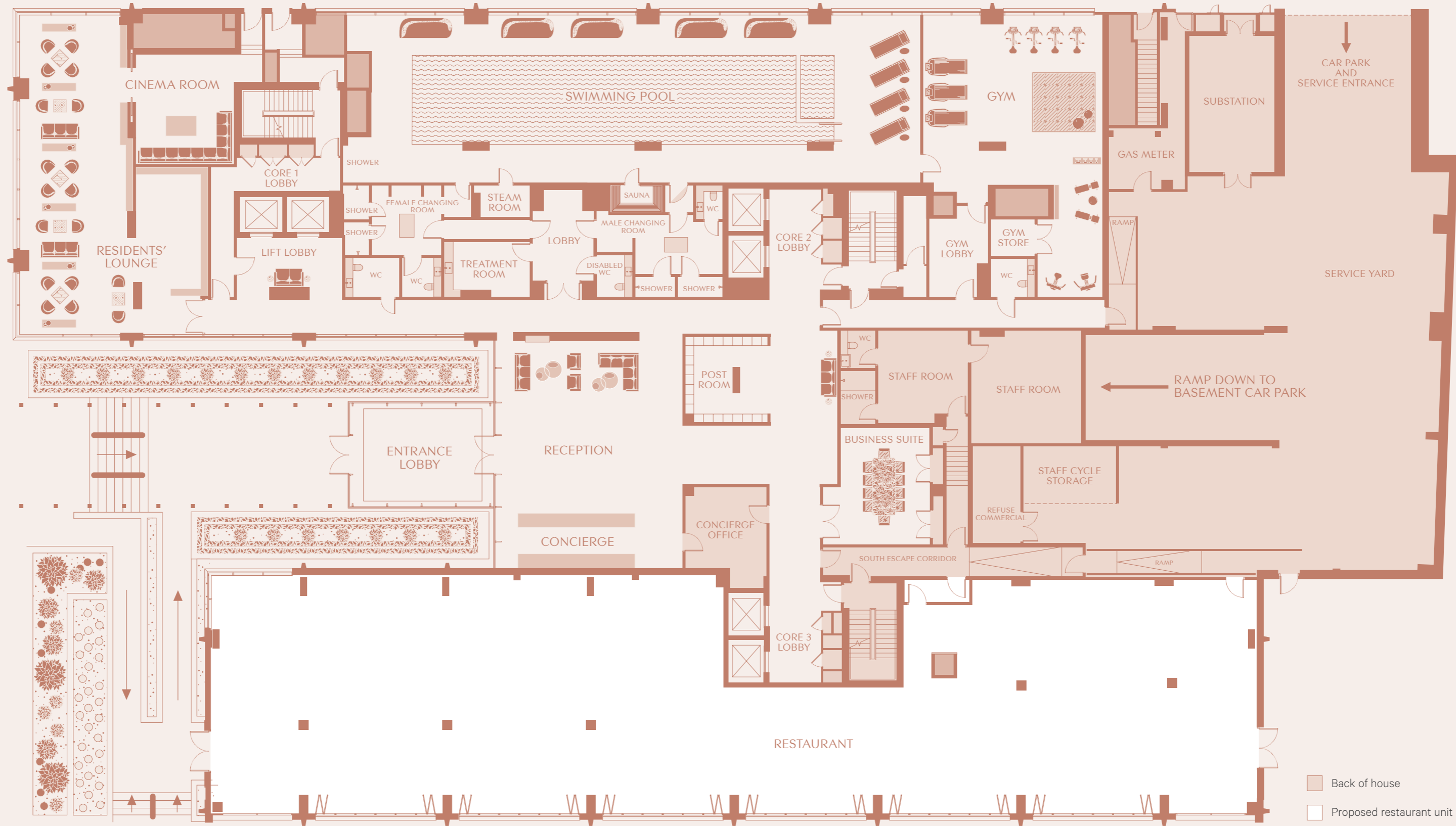
BASEMENT PLAN

6
|
7



GROUND-LEVEL AMENITIES

8
|
9

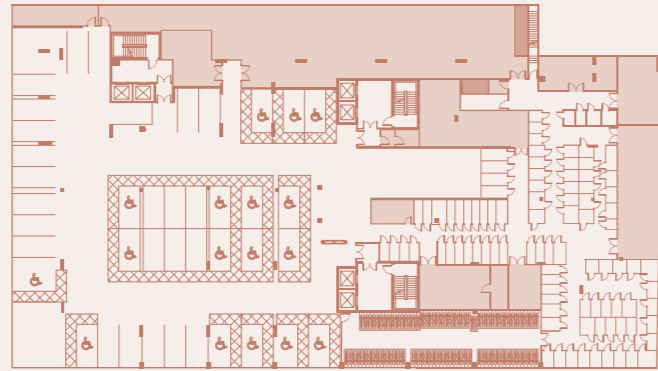


■ Back of house
□ Proposed restaurant unit



FLOORPLATES

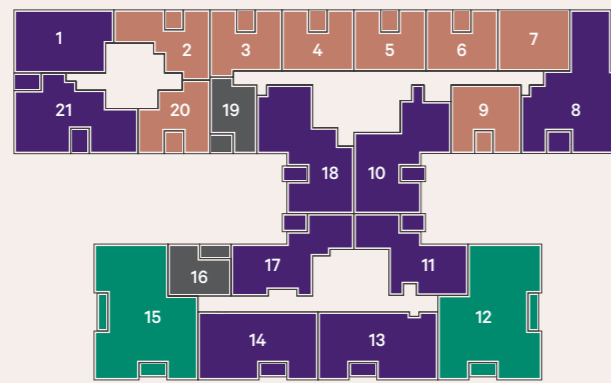
Basement



Ground floor

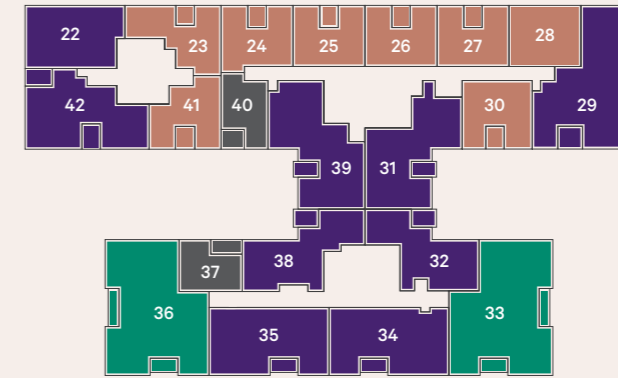


Floor 1

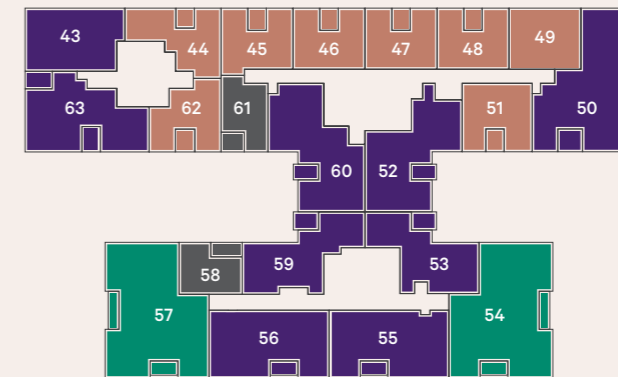


River Thames

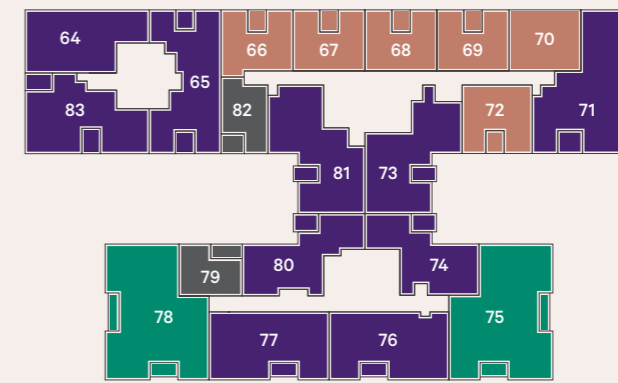
Floor 2



Floor 3



Floor 4



River Thames

12
|
13

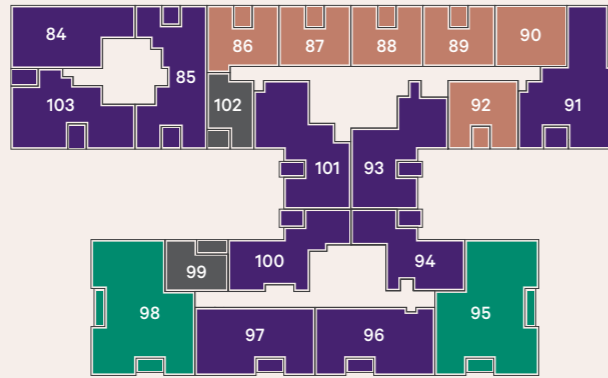


- One Bedroom Suite
- One Bedroom Apartment
- Two Bedroom Apartment
- Three Bedroom Apartment



FLOORPLATES

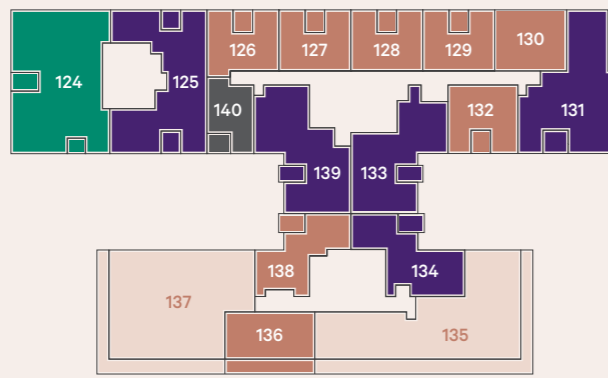
Floor 5



Floor 6

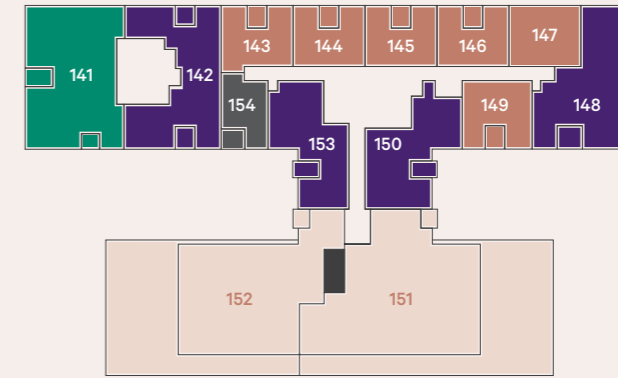


Floor 7

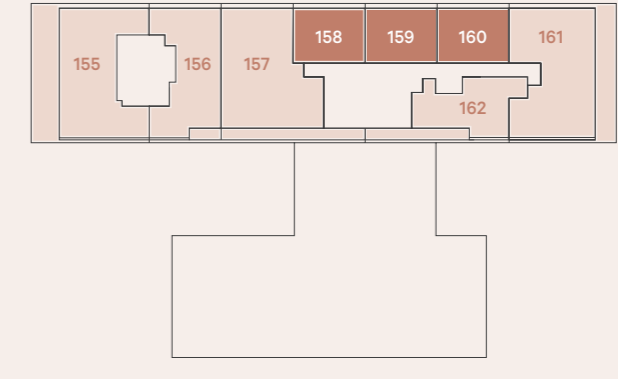


River Thames

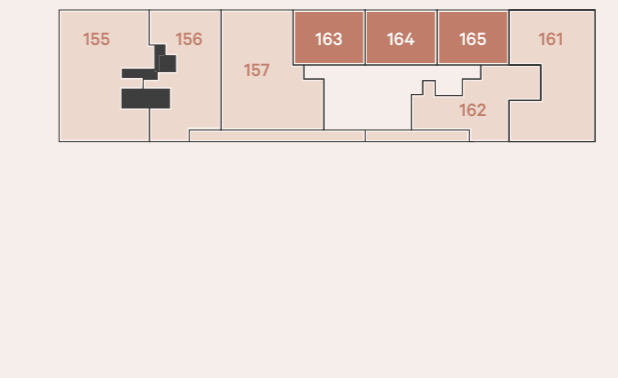
Floor 8



Floor 9



Floor 10



River Thames

14
|
15

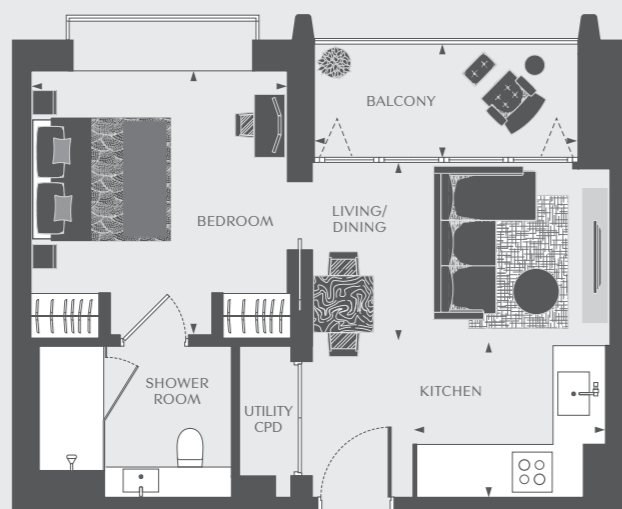


- One Bedroom Suite
- One Bedroom Apartment
- Two Bedroom Apartment
- Three Bedroom Apartment
- Penthouse



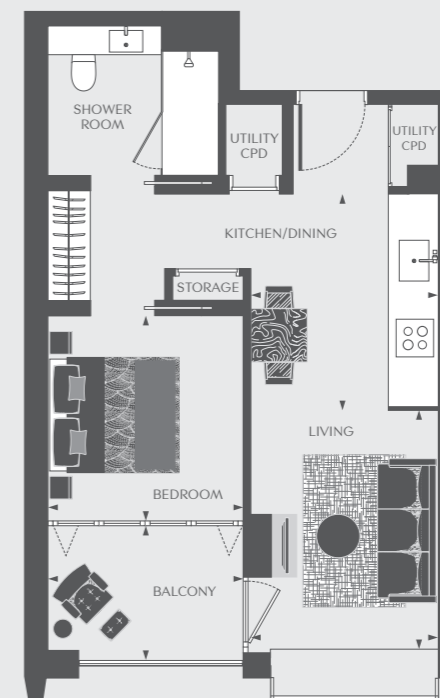
ONE BEDROOM SUITE

APARTMENTS 16, 37, 58, 79, 99, 119



ONE BEDROOM SUITE

APARTMENTS 19, 40, 61, 82, 102, 122, 140, 154



18
|
19

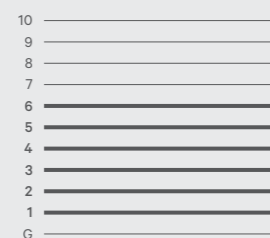


DIMENSIONS

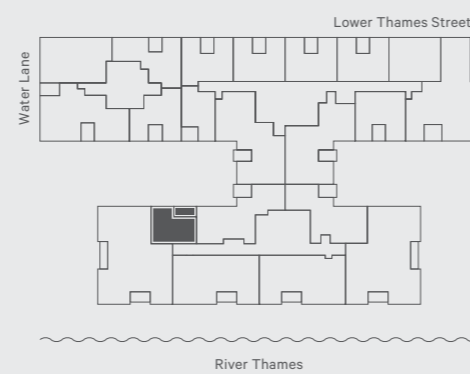
Living/Dining	3980 x 2693mm	13' 1" x 8' 10"
Kitchen	2404 x 1952mm	7' 11" x 6' 5"
Bedroom	3469 x 3340mm	11' 5" x 10' 11"
Shower Room	2492 x 2082mm	8' 2" x 6' 10"
Total	38.44 sq m	414 sq ft
Balcony	3467 x 1413mm	11' 4" x 4' 8"

FLOOR

APARTMENT



APARTMENT LOCATION



DIMENSIONS

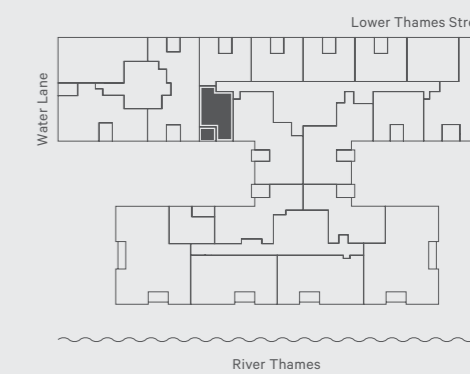
Living/Dining	3403 x 2644mm	11' 2" x 8' 8"
Kitchen	2964 x 2664mm	9' 9" x 8' 9"
Bedroom	2940 x 2715mm	9' 8" x 8' 11"
Shower Room	2485 x 2069mm	8' 2" x 6' 9"
Total	39.55 sq m	426 sq ft
Balcony Apt. 19, 61, 102, 140	2678 x 1922mm	8' 9" x 6' 4"
Balcony Apt. 40, 82, 122, 154	2678m x 2059m	8' 9" x 6' 9"

FLOOR

APARTMENT



APARTMENT LOCATION

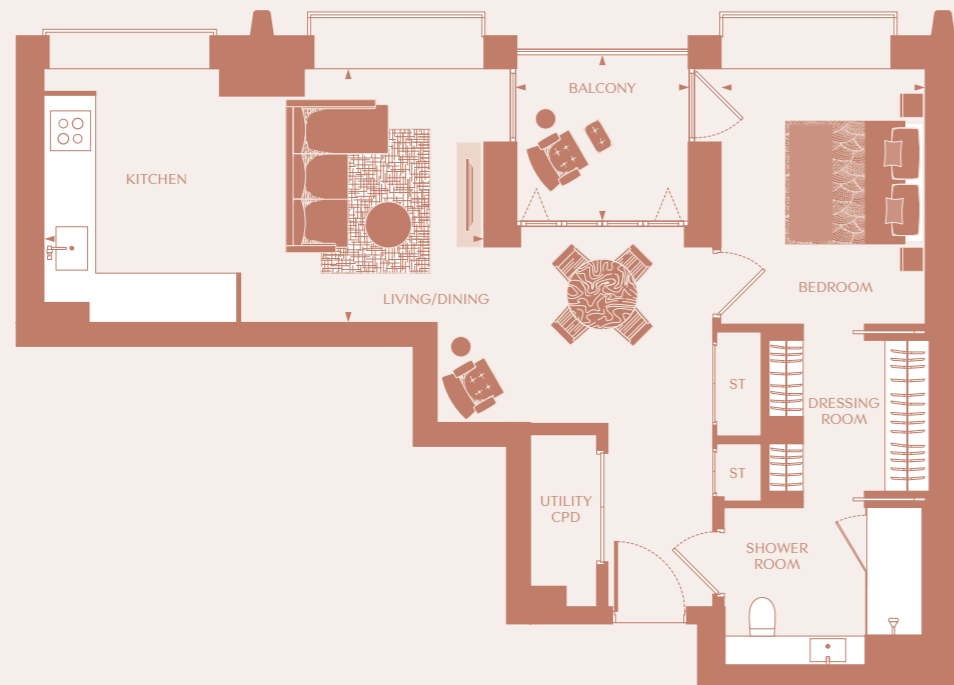




ONE BEDROOM
APARTMENTS

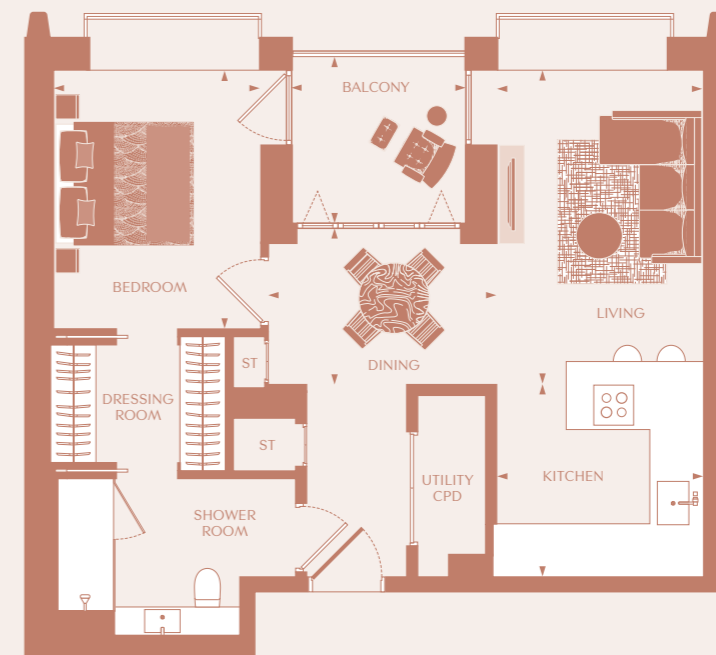
ONE BEDROOM APARTMENT

APARTMENTS 2, 23, 44



ONE BEDROOM APARTMENT

APARTMENTS 3, 24, 45, 66, 86, 106, 126, 143



22
|
23



DIMENSIONS

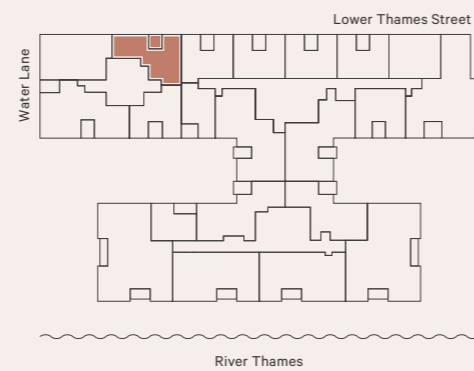
Living/Dining	3366 x 3228mm	11' 2" x 10' 7"
Kitchen	3406 x 2604mm	11' 2" x 8' 7"
Bedroom	3458 x 2732mm	11' 4" x 9' 0"
Dressing Room	2207 x 1910mm	7' 3" x 6' 3"
Shower Room	2767 x 2239mm	9' 1" x 7' 4"
Total	57.75 sq m	622 sq ft
Balcony Apt. 2, 44	2400 x 2172mm	7' 10" x 7' 2"
Balcony Apt. 23	2400 x 2309mm	7' 10" x 7' 7"

FLOOR



APARTMENT

APARTMENT LOCATION



DIMENSIONS

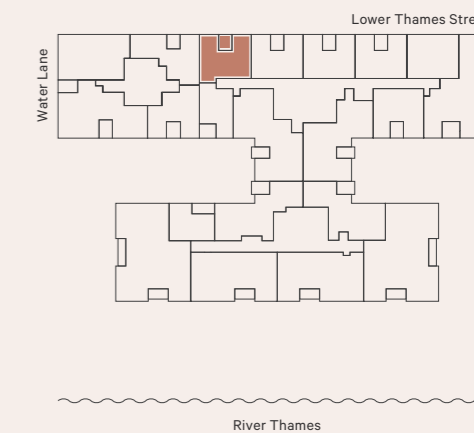
Living	4231 x 2702mm	13' 11" x 8' 10"
Dining	2892 x 2170mm	9' 6" x 7' 1"
Kitchen	2800 x 2645mm	9' 2" x 8' 8"
Bedroom	3475 x 2732mm	11' 5" x 9' 0"
Dressing Room	2488 x 1488mm	8' 2" x 4' 11"
Shower Room	3225 x 2252mm	10' 7" x 7' 5"
Total	54.97 sq m	592 sq ft
Balcony Apt. 3, 45, 86, 126	2400 x 2172mm	7' 10" x 7' 2"
Balcony Apt. 24, 66, 106, 143	2400 x 2309mm	7' 10" x 7' 7"

FLOOR



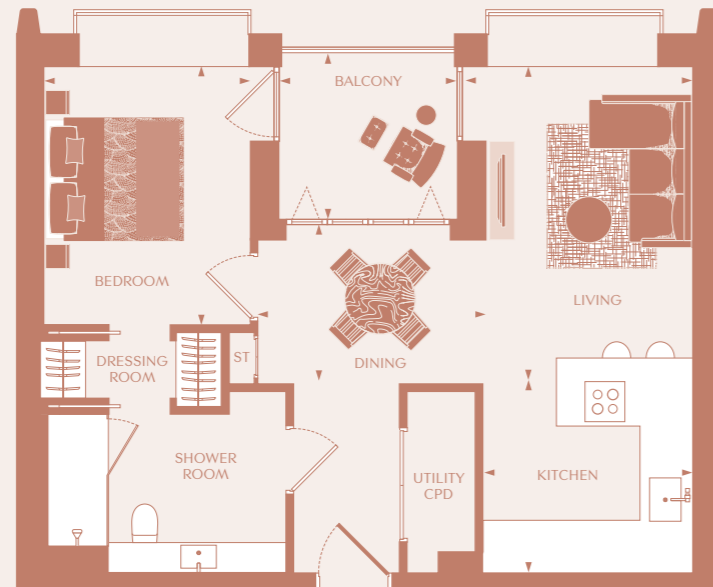
APARTMENT

APARTMENT LOCATION



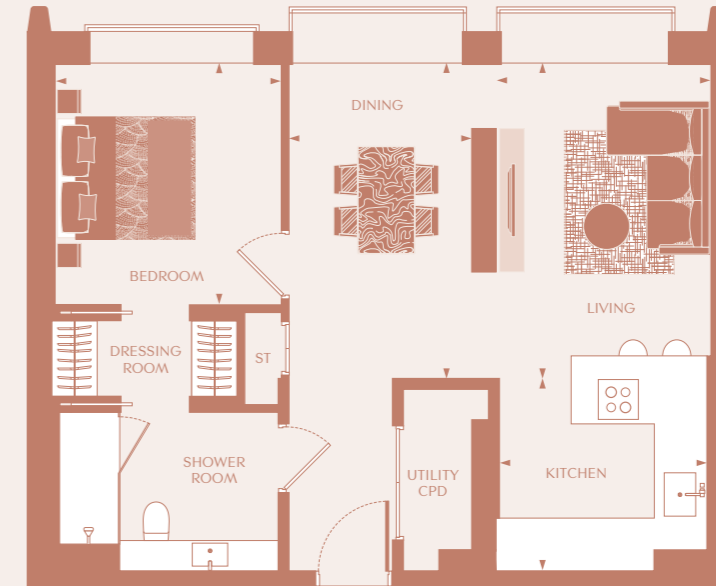
ONE BEDROOM APARTMENT

APARTMENTS 4, 5, 6, 25, 26, 27, 46, 47, 48, 67, 68, 69
87, 88, 89, 107, 108, 109, 127, 128, 129, 144, 145, 146



ONE BEDROOM APARTMENT

APARTMENTS 7, 28, 49, 70, 90, 110, 130, 147



24
|
25



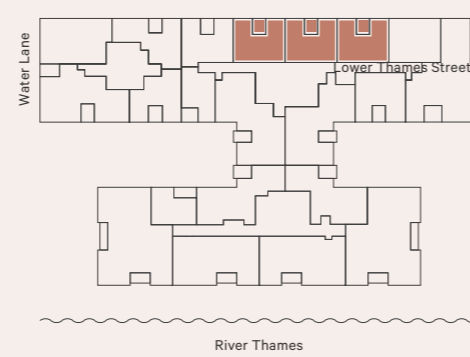
DIMENSIONS

Living	4211 x 2712mm	13' 10" x 8' 11"
Dining	2883 x 2180mm	9' 5" x 7' 2"
Kitchen	2802 x 2645mm	8' 11" x 8' 8"
Bedroom	3405 x 2732mm	11' 2" x 9' 0"
Dressing Room	2435 x 888mm	8' 0" x 2' 11"
Shower Room	3255 x 2550mm	10' 8" x 8' 4"
Total	53.28 sq m	573 sq ft
Balcony Apt. 4, 5, 6, 46, 47, 48, 87, 88, 89, 127, 128, 129	2400 x 2172mm	7' 10" x 7' 2"
Balcony Apt. 25, 26, 27, 67, 68, 69, 107, 108, 109, 144, 145, 146	2400 x 2309mm	7' 10" x 7' 7"

FLOOR

FLOOR	APARTMENT
10	
9	
8	144, 145, 146
7	127, 128, 129
6	107, 108, 109
5	87, 88, 89
4	67, 68, 69
3	46, 47, 48
2	25, 26, 27
1	4, 5, 6
G	

APARTMENT LOCATION



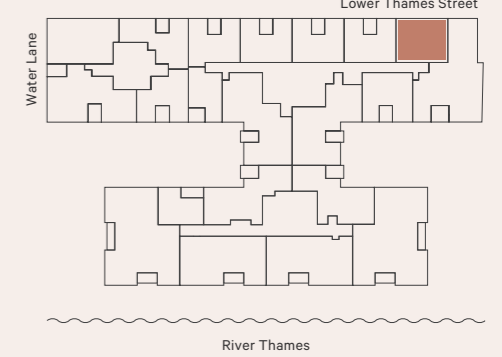
DIMENSIONS

Living	4186 x 2762mm	13' 9" x 9' 1"
Dining	4186 x 2407mm	13' 9" x 7' 11"
Kitchen	2778 x 2520mm	9' 1" x 8' 3"
Bedroom	3216 x 2962mm	10' 7" x 9' 9"
Dressing Room	2495 x 1078mm	8' 2" x 3' 6"
Shower Room	2987 x 2238mm	9' 10" x 7' 4"
Total	59.07 sq m	636 sq ft

FLOOR

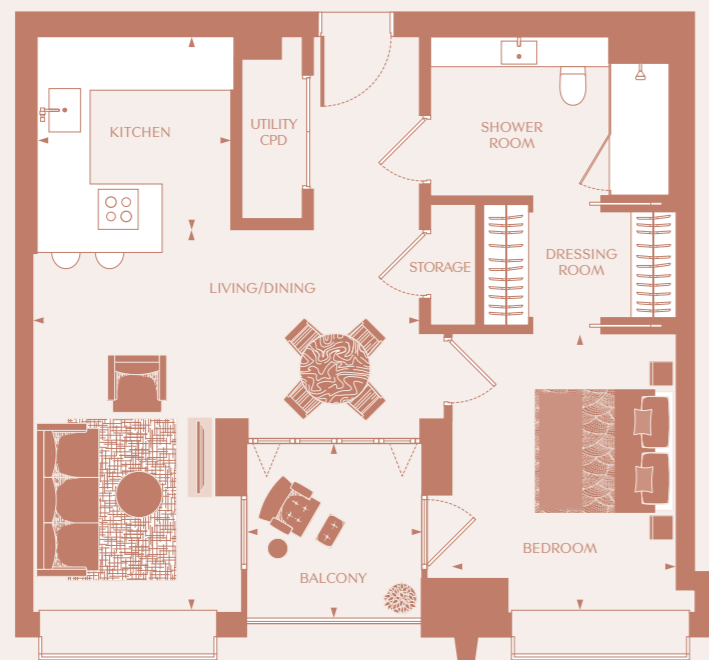
FLOOR	APARTMENT
10	
9	
8	147
7	130
6	110
5	90
4	70
3	49
2	28
1	7
G	

APARTMENT LOCATION



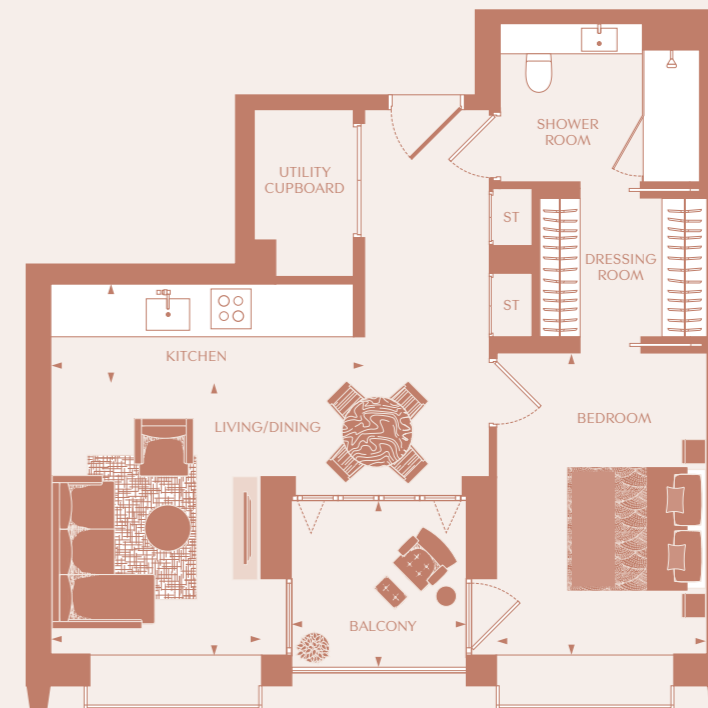
ONE BEDROOM APARTMENT

APARTMENTS 9, 30, 51, 72, 92, 112, 132, 149



ONE BEDROOM APARTMENT

APARTMENTS 20, 41, 62



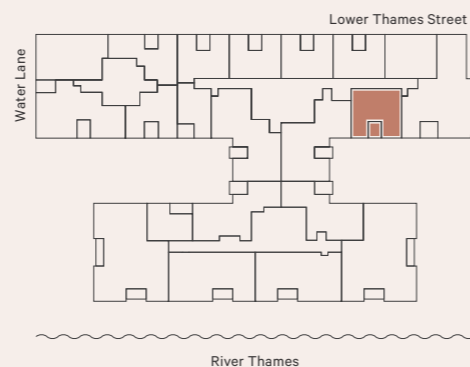
DIMENSIONS

Living/Dining	5094 x 5068mm	16' 9" x 16' 8"
Kitchen	2567 x 2555mm	8' 5" x 8' 5"
Bedroom	3637 x 2940mm	11' 11" x 9' 8"
Dressing Room	2544 x 1377mm	8' 4" x 4' 6"
Shower Room	3270 x 2274mm	10' 9" x 7' 6"
Total	58.17 sq m	626 sq ft
Balcony Apt. 9, 51, 92, 132	2407 x 2274mm	7' 11" x 7' 6"
Balcony Apt. 30, 72, 112, 149	2407 x 2411mm	7' 11" x 7' 11"

FLOOR

FLOOR	APARTMENT
10	
9	
8	149
7	132
6	112
5	92
4	72
3	51
2	30
1	9
G	

APARTMENT LOCATION



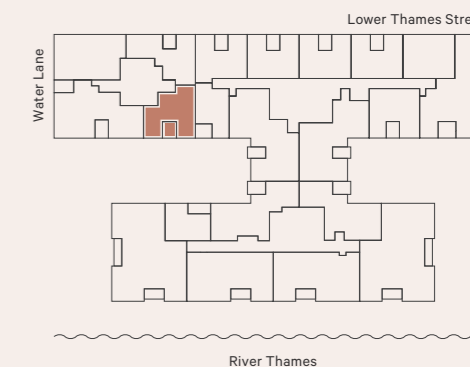
DIMENSIONS

Living/Dining	3619 x 2732mm	11' 10" x 9' 0"
Kitchen	4174 x 1300mm	13' 8" x 4' 3"
Bedroom	4110 x 2732mm	13' 6" x 9' 0"
Dressing Room	2397 x 1688mm	7' 10" x 5' 6"
Shower Room	2996 x 2252mm	9' 10" x 7' 5"
Total	53.98 sq m	581 sq ft
Balcony Apt. 20, 62	2400 x 2172mm	7' 10" x 7' 2"
Balcony Apt. 41	2400 x 2309mm	7' 10" x 7' 7"

FLOOR

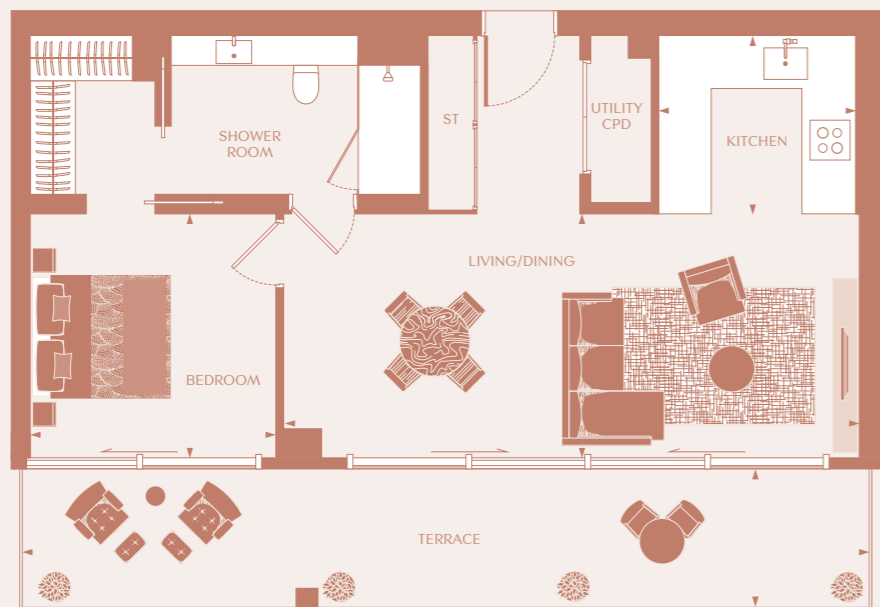
FLOOR	APARTMENT
10	
9	
8	
7	
6	
5	
4	
3	62
2	41
1	20
G	

APARTMENT LOCATION



ONE BEDROOM APARTMENT

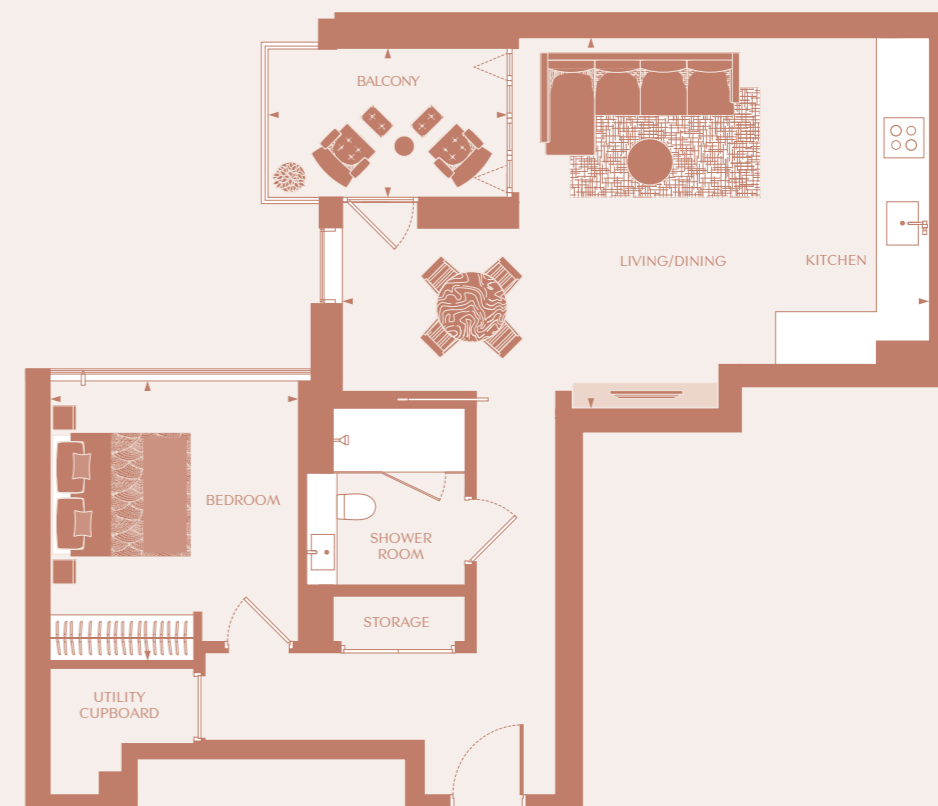
APARTMENT 136



28
|
29

ONE BEDROOM APARTMENT

APARTMENT 138

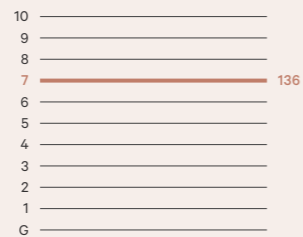


DIMENSIONS

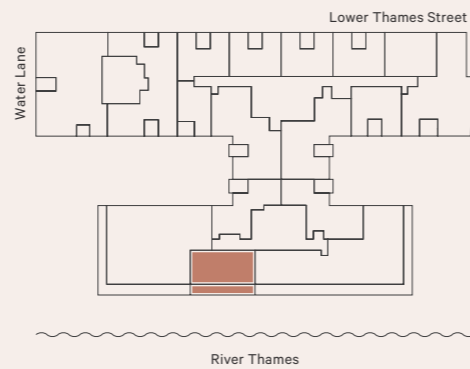
Living/Dining	7582 x 3254mm	24' 11" x 10' 8"
Kitchen	2674 x 2497mm	8' 9" x 8' 2"
Bedroom	3254 x 3220mm	10' 8" x 10' 7"
Dressing Room	2340 x 1783mm	7' 8" x 5' 10"
Shower Room	3186 x 2185mm	10' 5" x 7' 2"
Total	62.12 sq m	669 sq ft
Balcony	11250 x 2208mm	36' 11" x 7' 3"

FLOOR

APARTMENT



APARTMENT LOCATION



DIMENSIONS

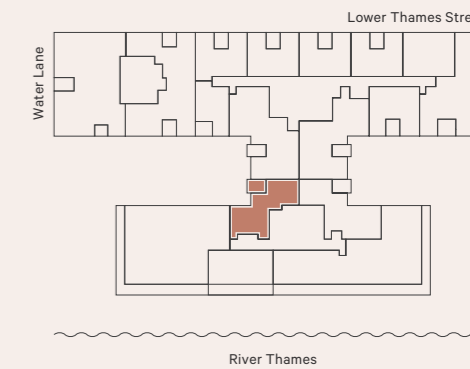
Living/Dining	5722 x 4941mm	18' 9" x 16' 3"
Kitchen	4357 x 1954mm	14' 4" x 6' 5"
Bedroom	3596 x 3202mm	11' 10" x 10' 6"
Shower Room	2513 x 2179mm	8' 3" x 7' 2"
Total	64.52 sq m	694 sq ft
Balcony	3224 x 1787mm	10' 7" x 5' 10"

FLOOR

APARTMENT



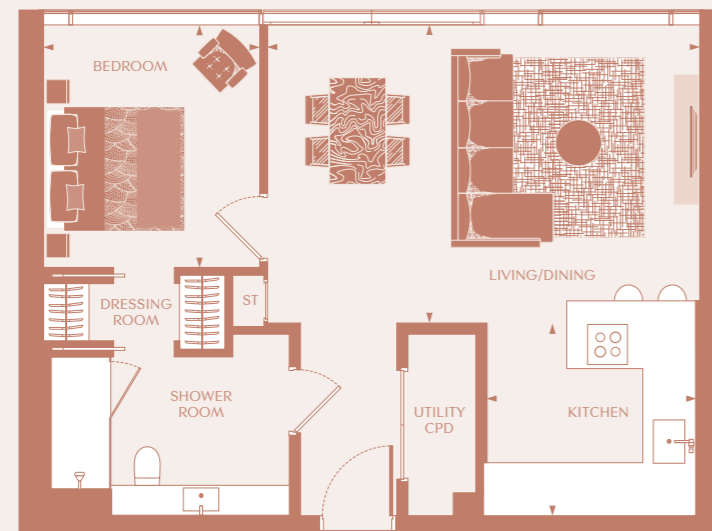
APARTMENT LOCATION



ONE BEDROOM APARTMENT

APARTMENTS 158, 159, 160, 163, 164, 165

30
|
31



DIMENSIONS

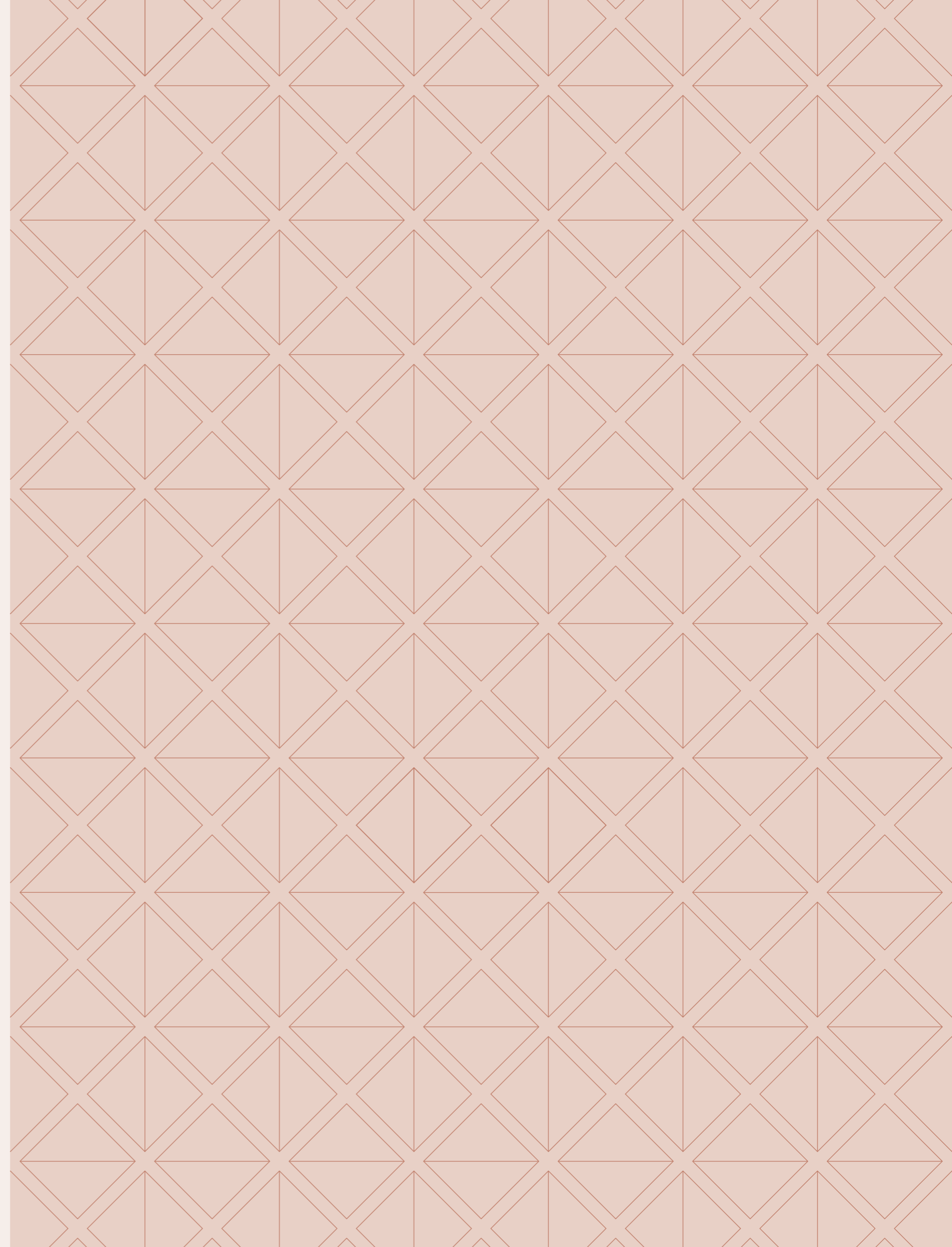
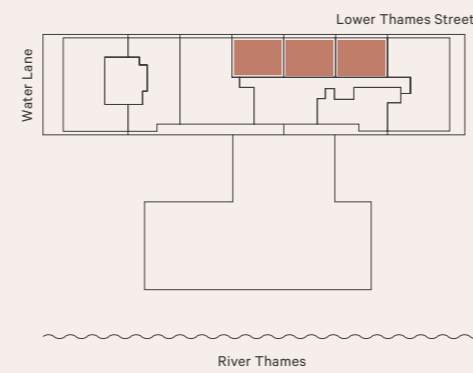
Living/Dining	5594 x 4056mm	18' 4" x 13' 4"
Kitchen	2800 x 2646mm	9' 2" x 8' 8"
Bedroom	3250 x 2879mm	10' 8" x 9' 5"
Dressing Room	2435 x 888mm	8' 0" x 2' 11"
Shower Room	3165 x 2252mm	10' 5" x 7' 5"
Total	56.88 sq m	612 sq ft

FLOOR

APARTMENT

10	163, 164, 165
9	158, 159, 160
8	
7	
6	
5	
4	
3	
2	
1	
G	

APARTMENT LOCATION

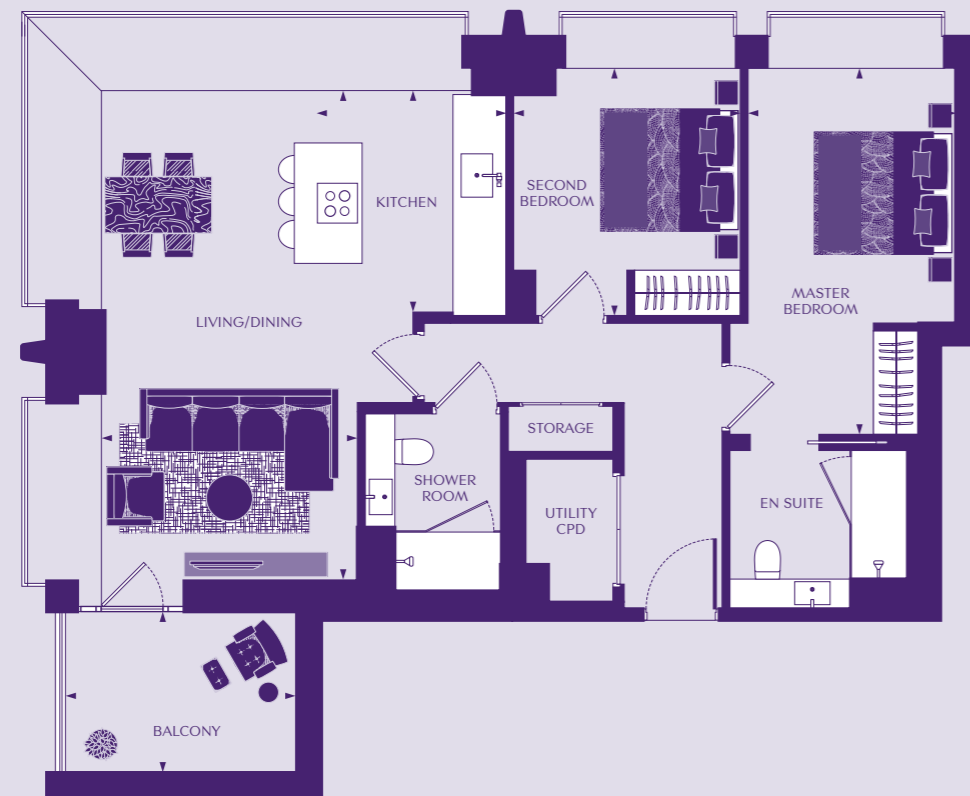


The background of the entire image is a repeating geometric pattern. It consists of a grid of interlocking diamonds. Each diamond is formed by two overlapping squares, one rotated 45 degrees relative to the other. The lines forming these shapes are a light, pale purple color, creating a subtle contrast against the darker purple background. The pattern is uniform and covers the entire area.

TWO BEDROOM
APARTMENTS

TWO BEDROOM APARTMENT

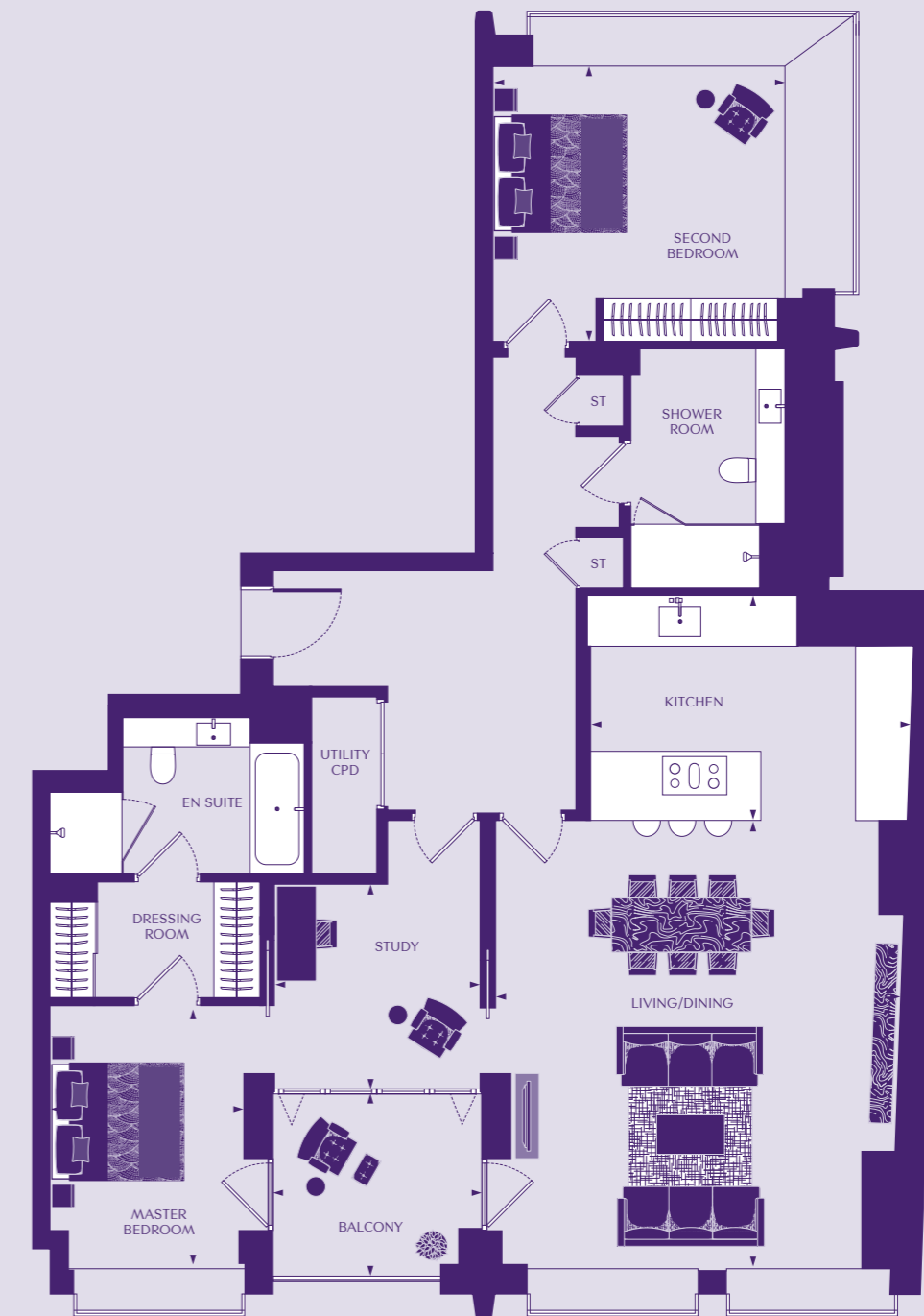
APARTMENTS 1, 22, 43



34
|
35

TWO BEDROOM APARTMENT

APARTMENTS 8, 29, 50, 71, 91, 111, 131, 148



34
|
35

DIMENSIONS

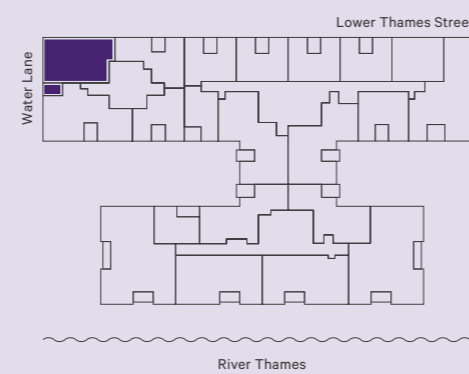
Living/Dining	6707 x 3335mm	22' 0" x 10' 11"
Kitchen	3252 x 2582mm	10' 8" x 8' 6"
Master Bedroom	4762 x 2751mm	15' 7" x 9' 0"
En suite	2484 x 2252mm	8' 2" x 7' 5"
Bedroom 2	3272 x 2970mm	10' 9" x 9' 9"
Shower Room	2510 x 1829mm	8' 3" x 6' 0"
Total	78.02 sq m	840 sq ft
Balcony Apt. 1, 43	2997 x 2180mm	9' 10" x 7' 2"
Balcony Apt. 22	3134 x 2180mm	10' 3" x 7' 2"

FLOOR

10	_____
9	_____
8	_____
7	_____
6	_____
5	_____
4	_____
3	===== 43
2	===== 22
1	===== 1
G	_____

APARTMENT

APARTMENT LOCATION



DIMENSIONS

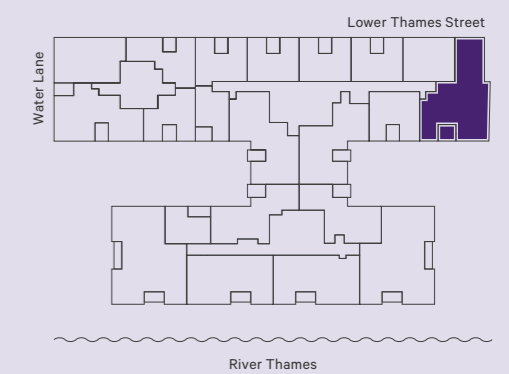
Living/Dining	6046 x 5574mm	19' 10" x 18' 3"
Kitchen	4401 x 3100mm	18' 3" x 10' 2"
Master Bedroom	3498 x 2921mm	11' 6" x 9' 7"
Dressing Room	2936 x 1554mm	9' 8" x 5' 1"
En suite	3485 x 2425mm	11' 5" x 7' 11"
Bedroom 2	3975 x 3950mm	13' 0" x 12' 11"
Study	2833 x 2798mm	9' 4" x 9' 2"
Shower Room	3203 x 2254mm	10' 6" x 7' 5"
Total	124 sq m	1338 sq ft
Balcony Apt. 8, 50, 91, 131	2742 x 2484mm	9' 0" x 8' 2"
Balcony Apt. 29, 71, 111, 148	2742 x 2621mm	9' 0" x 8' 7"

FLOOR

10	_____
9	_____
8	===== 148
7	===== 131
6	===== 111
5	===== 91
4	===== 71
3	===== 50
2	===== 29
1	===== 8
G	_____

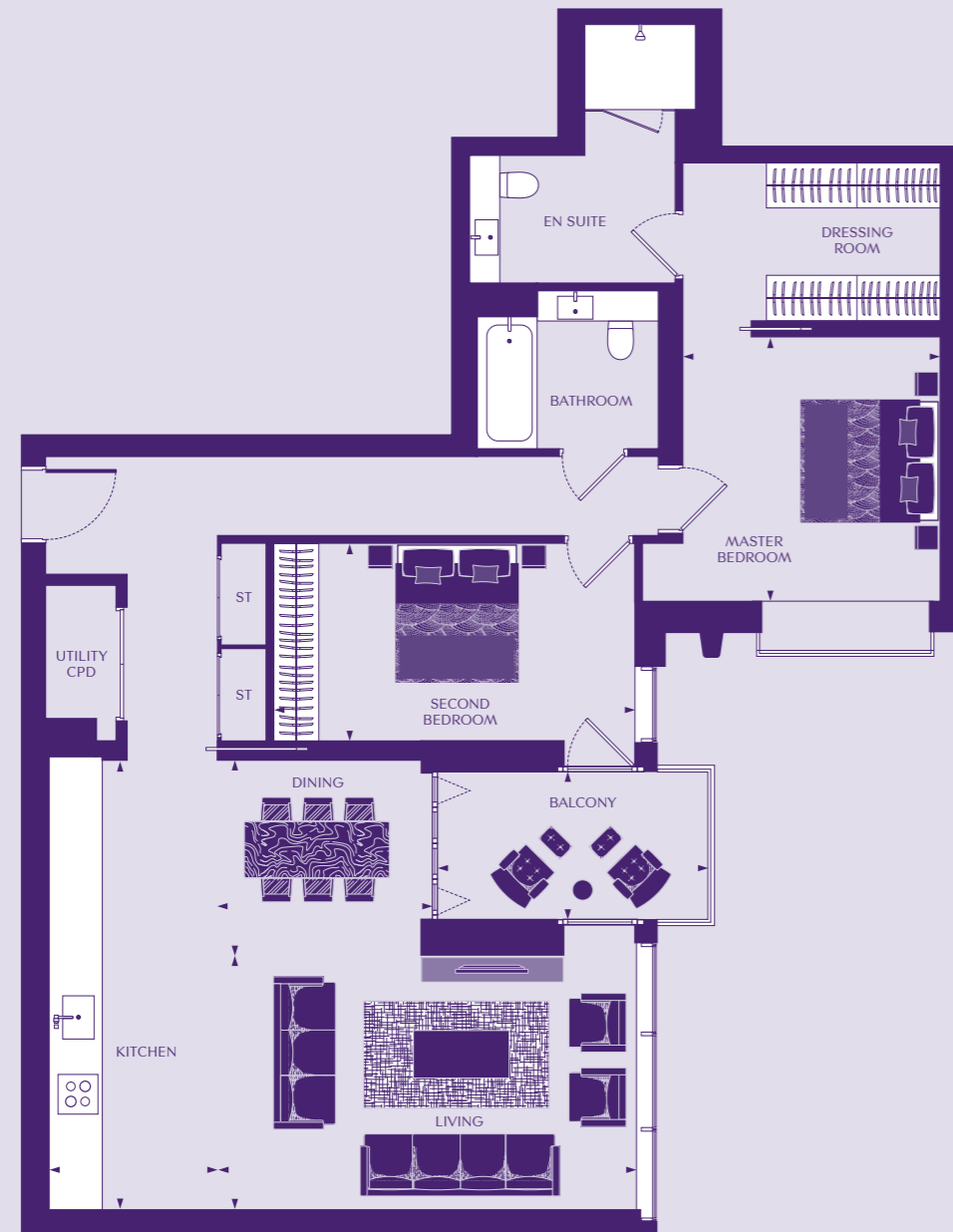
APARTMENT

APARTMENT LOCATION



TWO BEDROOM APARTMENT

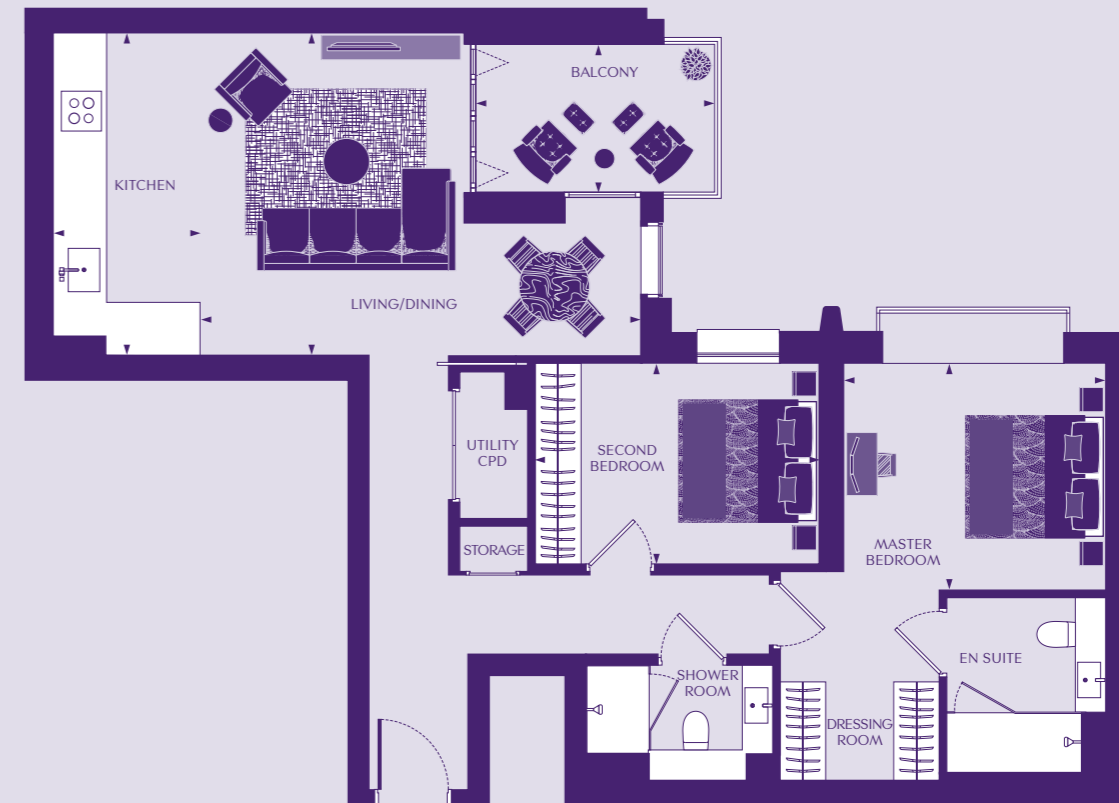
APARTMENT 10



36
|
37

TWO BEDROOM APARTMENT

APARTMENT 11

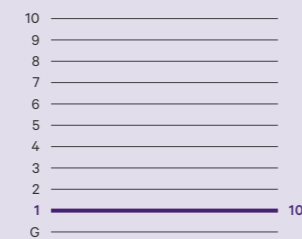


36
|
37

DIMENSIONS

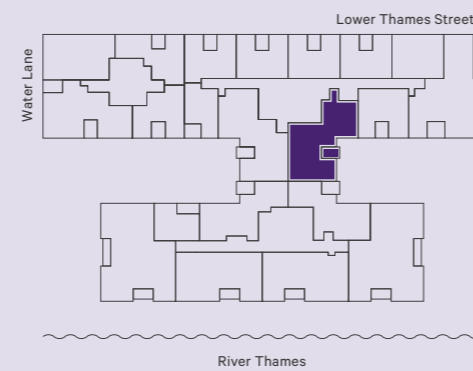
Living	5922 x 3304mm	19' 5" x 10' 10"
Dining	2941 x 2694mm	9' 8" x 8' 10"
Kitchen	5998 x 2089mm	19' 8" x 6' 10"
Master Bedroom	3446 x 3381mm	11' 4" x 11' 1"
Dressing Room	3396 x 2229mm	11' 2" x 7' 4"
En suite	3347 x 2766mm	11' 0" x 9' 1"
Bedroom 2	4754 x 2643mm	15' 7" x 8' 8"
Bathroom	2485 x 2235mm	8' 2" x 7' 4"
Total	105.84 sq m	1139 sq ft
Balcony	3656 x 1837mm	12' 0" x 6' 0"

FLOOR



APARTMENT

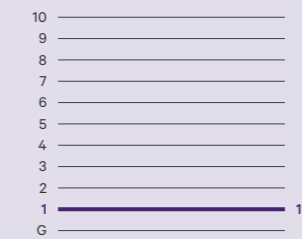
APARTMENT LOCATION



DIMENSIONS

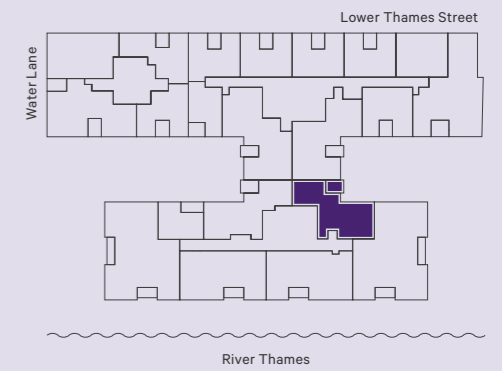
Living/Dining	5819 x 4342mm	19' 1" x 14' 3"
Kitchen	4357 x 1954mm	14' 4" x 6' 5"
Master Bedroom	3413 x 2958mm	11' 2" x 9' 8"
Dressing Room	2000 x 1308mm	6' 7" x 4' 3"
En suite	2563 x 2179mm	8' 5" x 7' 2"
Bedroom 2	3717 x 2645mm	12' 2" x 8' 8"
Shower Room	2398 x 1812mm	7' 10" x 5' 11"
Total	81.29 sq m	875 sq ft
Balcony	3221 x 1787mm	10' 7" x 5' 10"

FLOOR



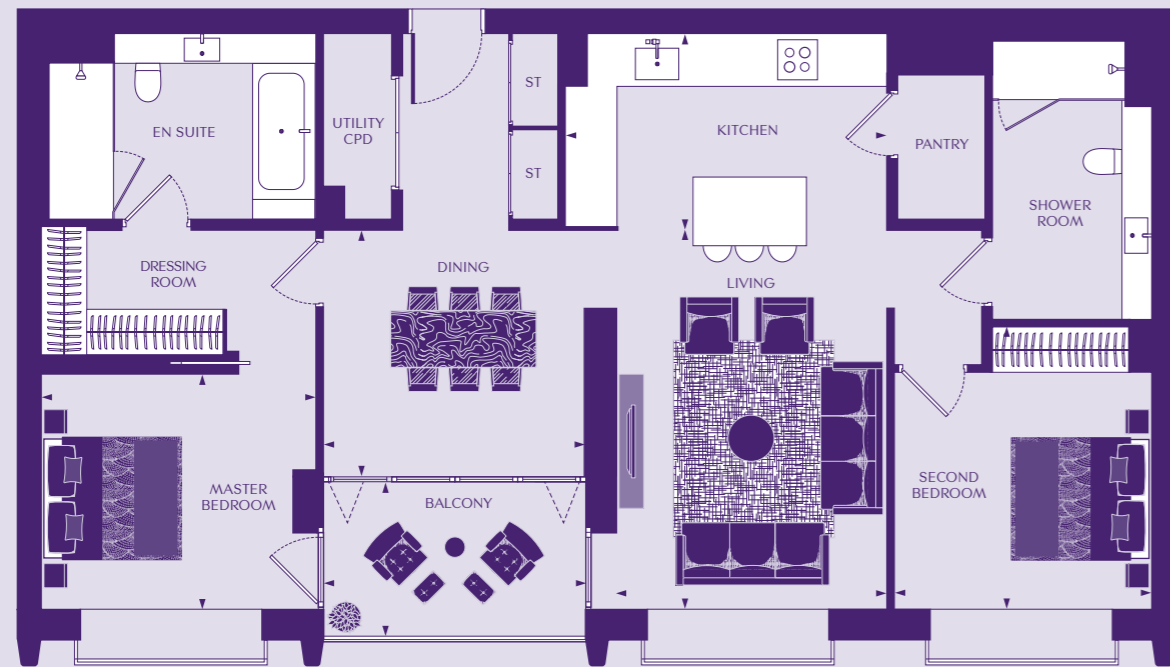
APARTMENT

APARTMENT LOCATION



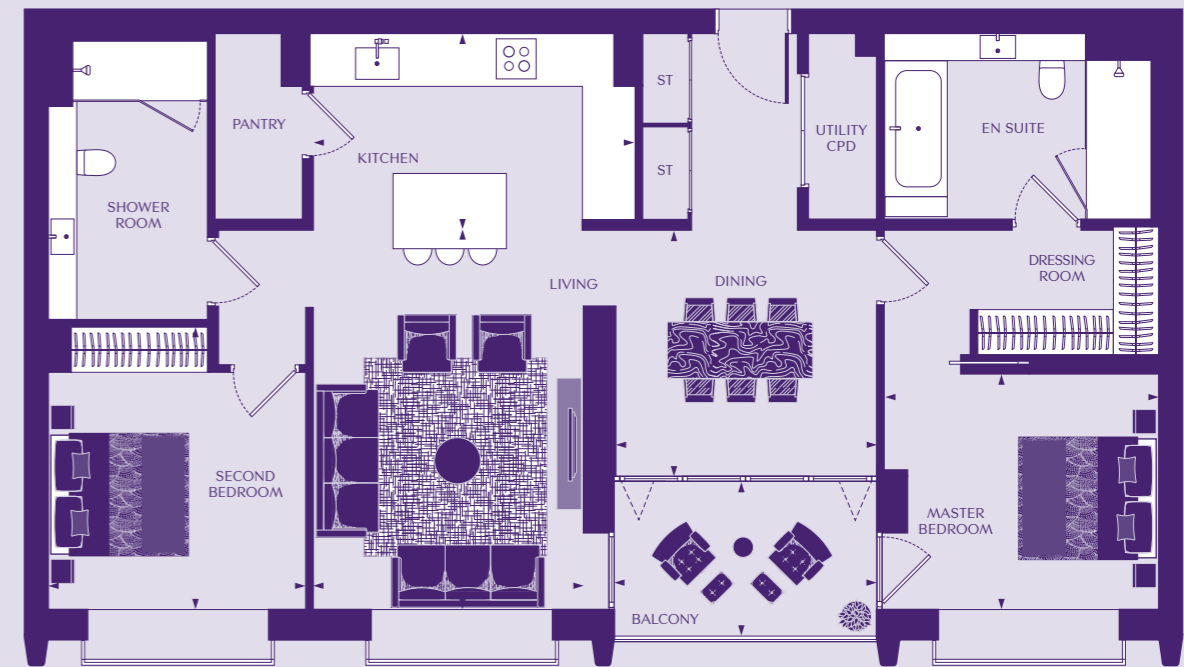
TWO BEDROOM APARTMENT

APARTMENT 13



TWO BEDROOM APARTMENT

APARTMENT 14



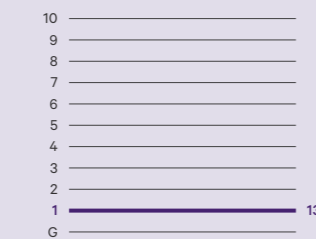
38
|
39



DIMENSIONS

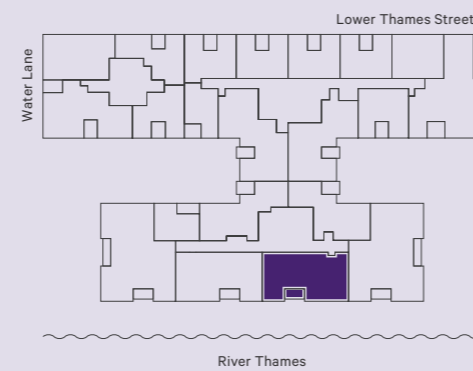
Living	5049 x 3493mm	16' 7" x 11' 6"
Dining	3402 x 3348mm	11' 2" x 11' 0"
Kitchen	4270 x 2712mm	14' 0" x 8' 11"
Master Bedroom	3592 x 3159mm	11' 9" x 10' 4"
Dressing Room	3613 x 1750mm	11' 10" x 5' 9"
En suite	3647 x 2603mm	12' 0" x 8' 6"
Bedroom 2	3798 x 3365mm	12' 6" x 11' 0"
Shower Room	3883 x 2085mm	12' 9" x 6' 10"
Total	105.82 sq m	1139 sq ft
Balcony	3568 x 1963mm	11' 8" x 6' 5"

FLOOR



APARTMENT

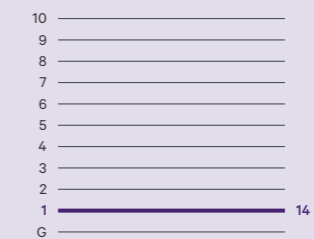
APARTMENT LOCATION



DIMENSIONS

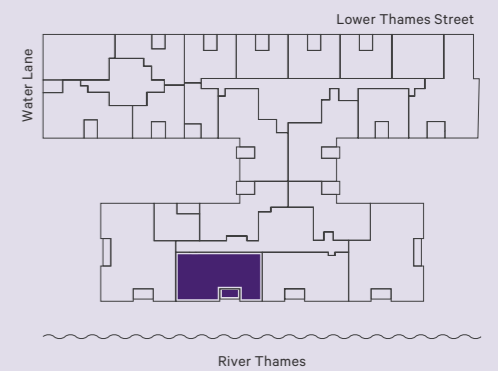
Living	4954 x 3492mm	16' 3" x 11' 5"
Dining	3407 x 3253mm	11' 2" x 10' 8"
Kitchen	4270 x 2652mm	14' 0" x 8' 8"
Master Bedroom	3588 x 3159mm	11' 9" x 10' 4"
Dressing Room	3608 x 1750mm	11' 10" x 5' 9"
En suite	3647 x 2603mm	12' 0" x 8' 6"
Bedroom 2	3733 x 3364mm	12' 3" x 11' 0"
Shower Room	3948 x 2085mm	12' 11" x 6' 10"
Total	105.99 sq m	1141 sq ft
Balcony	3568 x 1963mm	11' 8" x 6' 5"

FLOOR



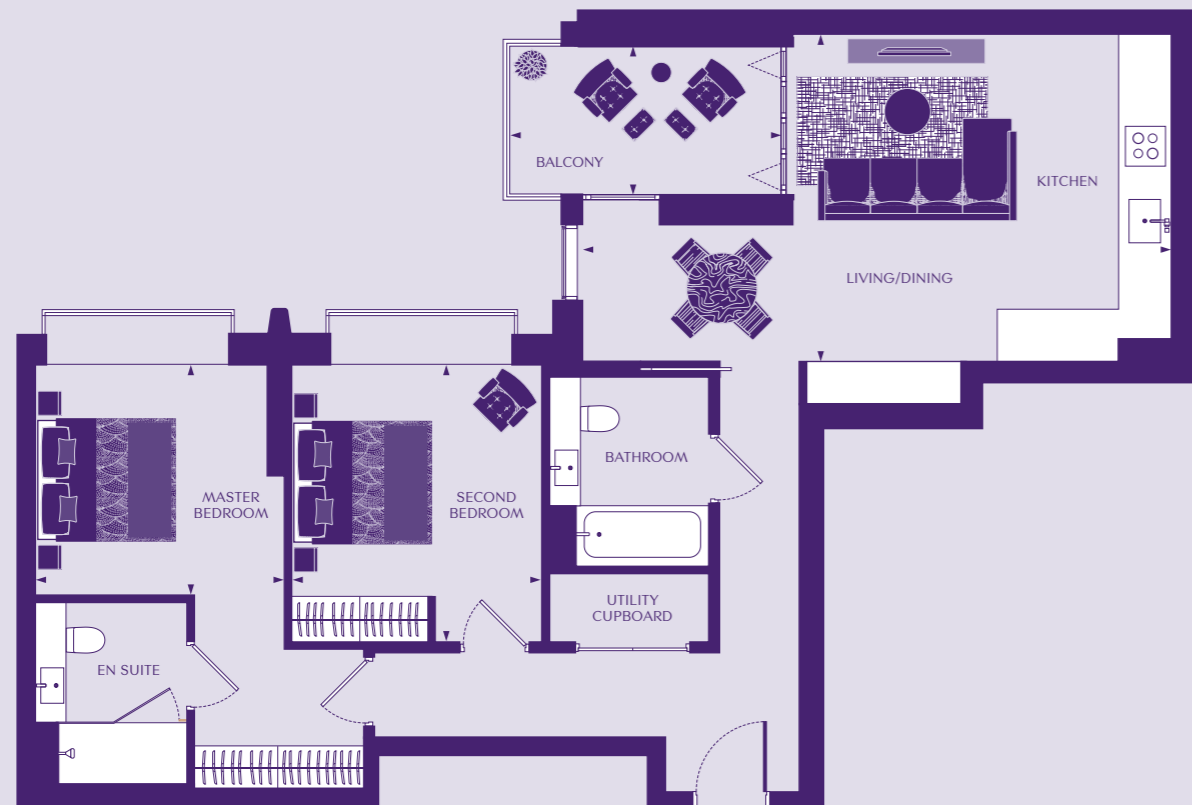
APARTMENT

APARTMENT LOCATION



TWO BEDROOM APARTMENT

APARTMENT 17



DIMENSIONS

Living/Dining	4941 x 3076mm	16' 3" x 10' 1"
Kitchen	4357 x 1954mm	14' 4" x 6' 5"
Master Bedroom	3257 x 3111mm	11' 10" x 10' 8"
En suite	2590 x 2035mm	8' 6" x 6' 8"
Bedroom 2	3601 x 3195mm	11' 10" x 10' 6"
Bathroom	2361 x 2130mm	7' 9" x 7' 0"
Total	84.07 sq m	905 sq ft
Balcony	3659 x 1787mm	12' 0" x 5' 10"

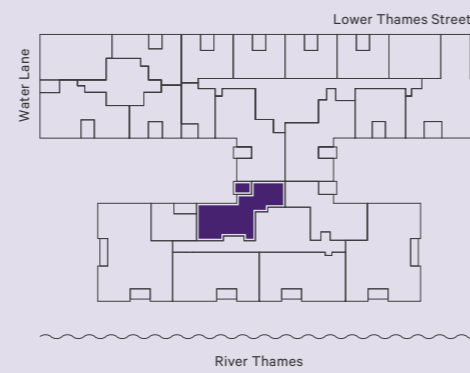
FLOOR



APARTMENT

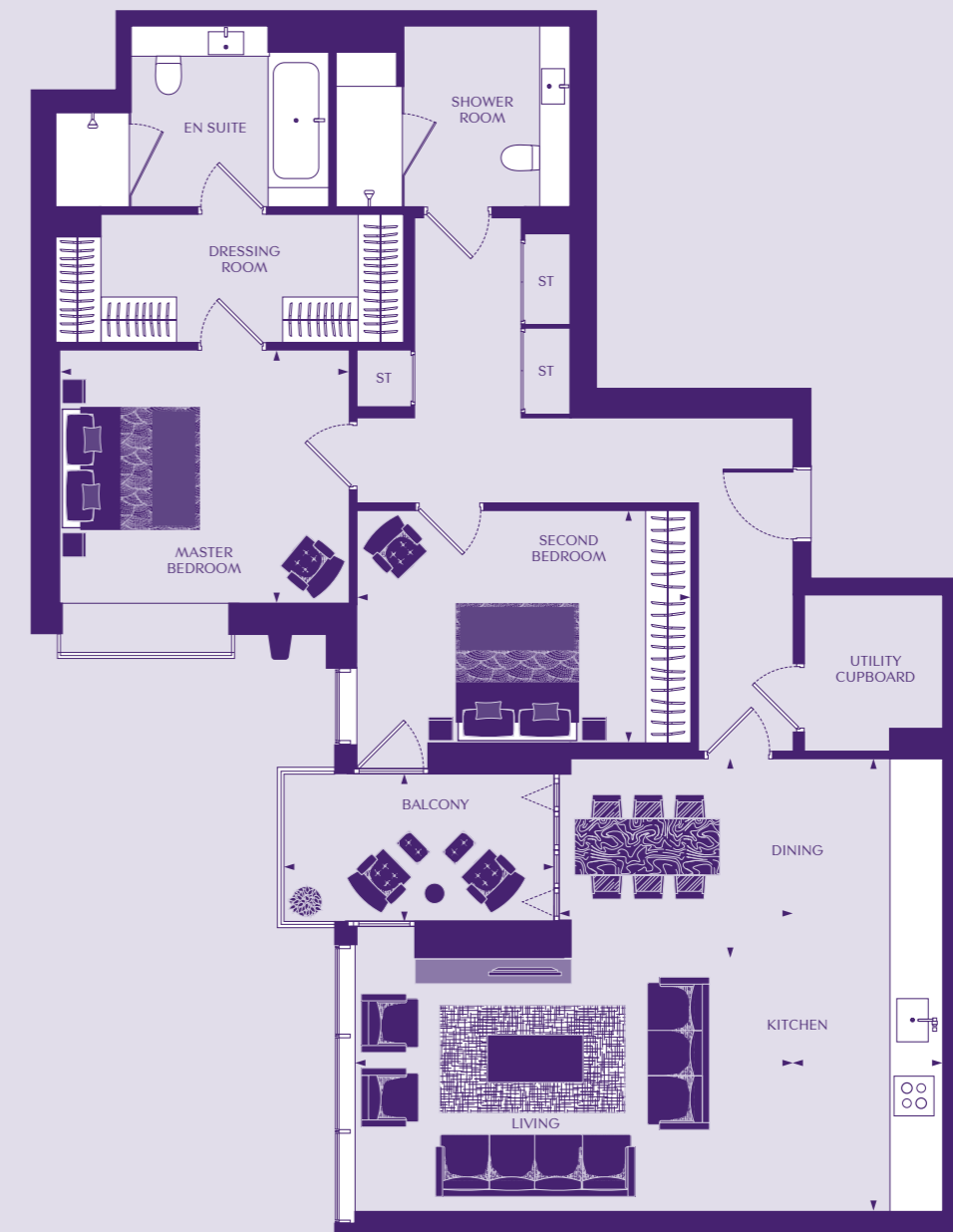
17

APARTMENT LOCATION



TWO BEDROOM APARTMENT

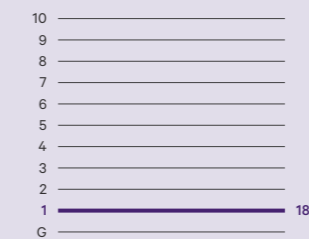
APARTMENT 18



DIMENSIONS

Living	6066 x 3310mm	19' 11" x 10' 10"
Dining	3197 x 2691mm	10' 6" x 8' 10"
Kitchen	6001 x 1945mm	19' 8" x 6' 5"
Master Bedroom	3847 x 3366mm	12' 7" x 11' 1"
Dressing Room	4603 x 1685mm	15' 1" x 5' 6"
En suite	3395 x 2425mm	11' 2" x 7' 11"
Bedroom 2	4428 x 3124mm	14' 6" x 10' 3"
Shower Room	3212 x 2425mm	10' 6" x 7' 11"
Total	114.46 sq m	1232 sq ft
Balcony	3659 x 1787mm	12' 0" x 5' 10"

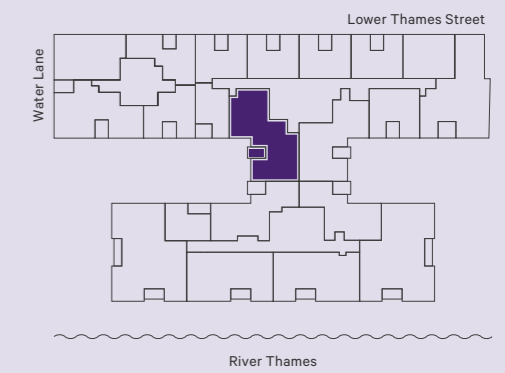
FLOOR



APARTMENT

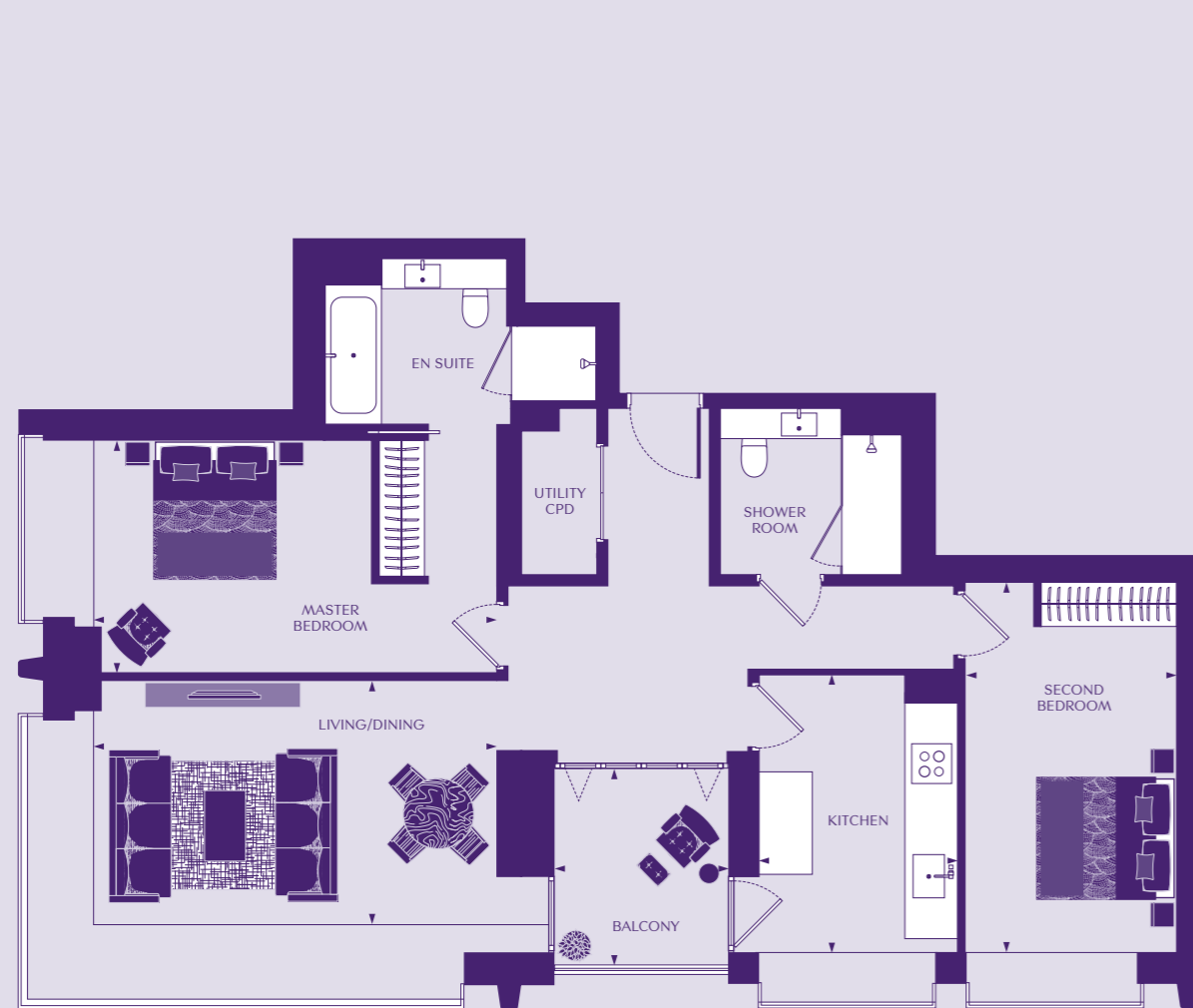
18

APARTMENT LOCATION



TWO BEDROOM APARTMENT

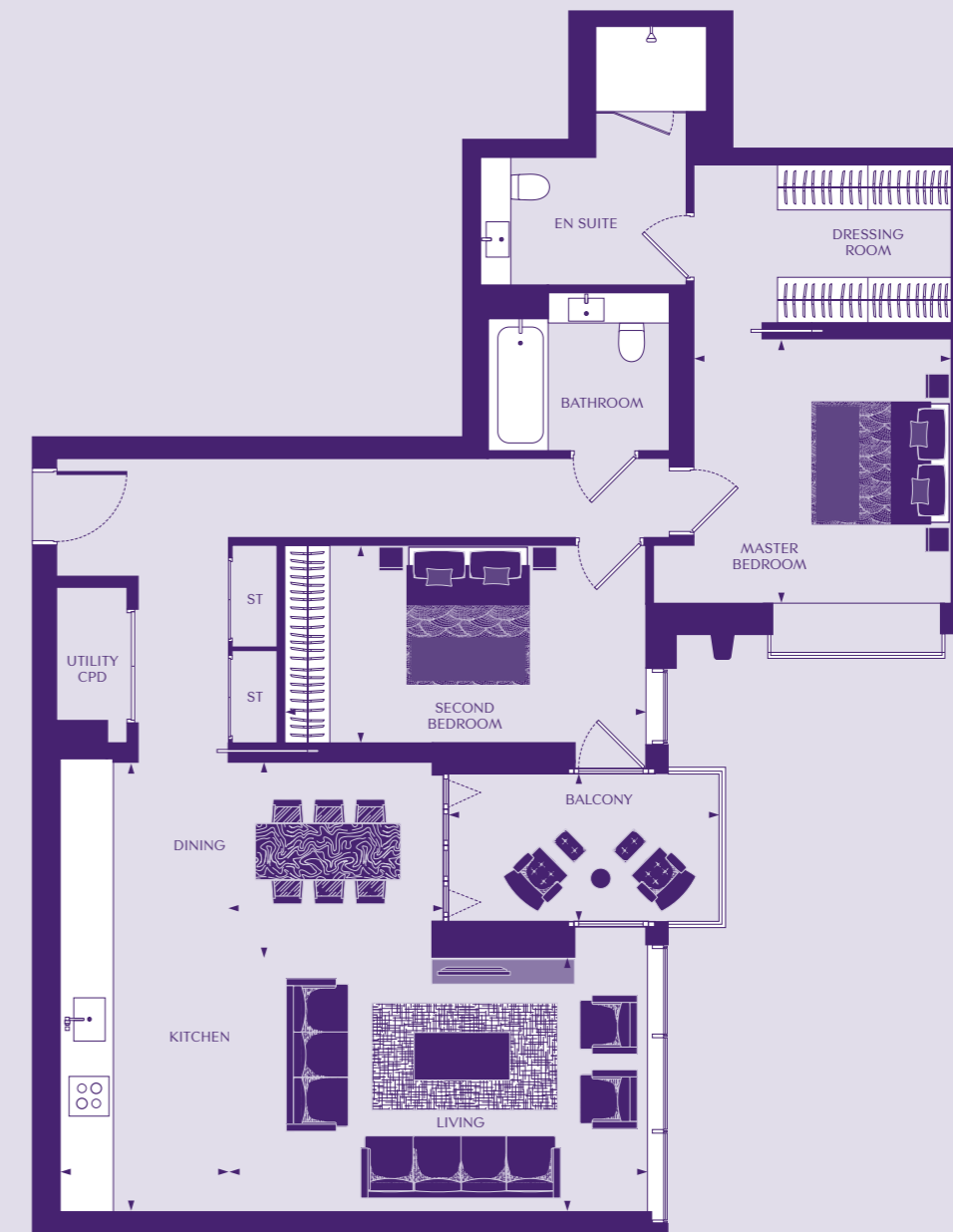
APARTMENTS 21, 42, 63, 83, 103, 123



42
|
43

TWO BEDROOM APARTMENT

APARTMENTS 31, 52, 73, 93, 113, 133, 150



DIMENSIONS

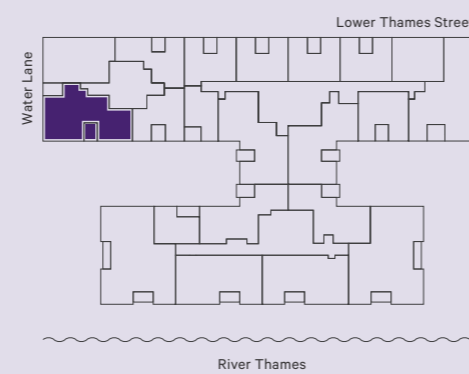
Living/Dining	5530 x 3601mm	18' 2" x 11' 10"
Kitchen	3705 x 2632mm	12' 2" x 8' 8"
Master Bedroom	5529 x 3172mm	18' 2" x 10' 5"
En suite	3798 x 2166mm	12' 6" x 7' 1"
Bedroom 2	4919 x 2764mm	16' 2" x 9' 1"
Shower Room	2484 x 2252mm	8' 2" x 7' 5"
Total	93.68 sq m	1008 sq ft
Balcony Apt. 21, 63, 103	2572 x 2408mm	8' 5" x 7' 11"
Balcony Apt. 42, 83, 123	2709 x 2408mm	8' 11" x 7' 11"

FLOOR

FLOOR	APARTMENT
10	
9	
8	
7	
6	123
5	103
4	83
3	63
2	42
1	21
G	

APARTMENT

APARTMENT LOCATION



DIMENSIONS

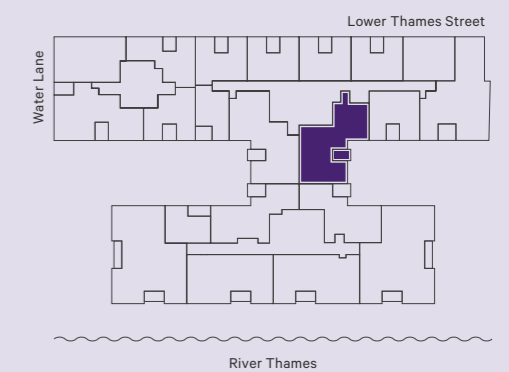
Living	5813 x 3304mm	19' 1" x 10' 10"
Dining	2947 x 2694mm	9' 8" x 8' 10"
Kitchen	5998 x 2232mm	19' 8" x 7' 4"
Master Bedroom	3446 x 3381mm	11' 4" x 11' 1"
En suite	3347 x 2766mm	11' 0" x 9' 1"
Dressing Room	3396 x 2229mm	11' 2" x 7' 4"
Bedroom 2	4754 x 2643mm	15' 7" x 8' 8"
Bathroom	2485 x 2278mm	8' 2" x 7' 6"
Total	106.08 sq m	1142 sq ft
Balcony	3656 x 1837mm	12' 0" x 6' 0"

FLOOR

FLOOR	APARTMENT
10	
9	
8	150
7	133
6	113
5	93
4	73
3	52
2	31
1	
G	

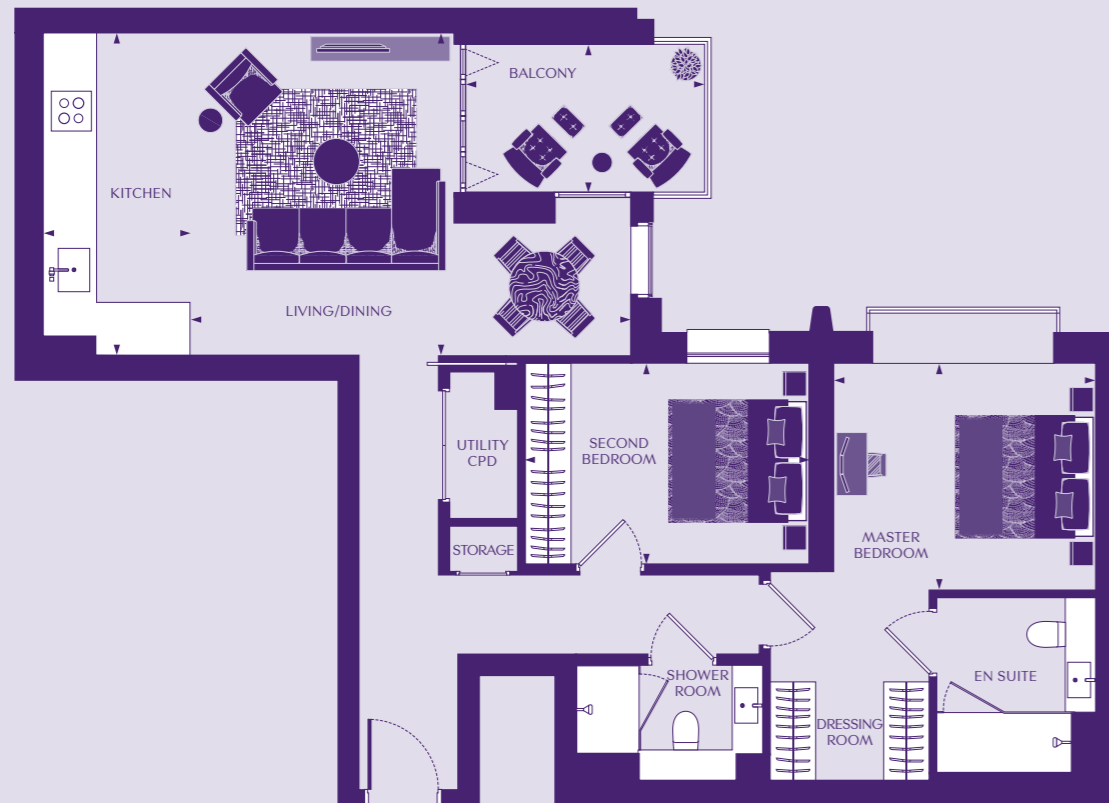
APARTMENT

APARTMENT LOCATION



TWO BEDROOM APARTMENT

APARTMENTS 32, 53, 74, 94, 114



DIMENSIONS

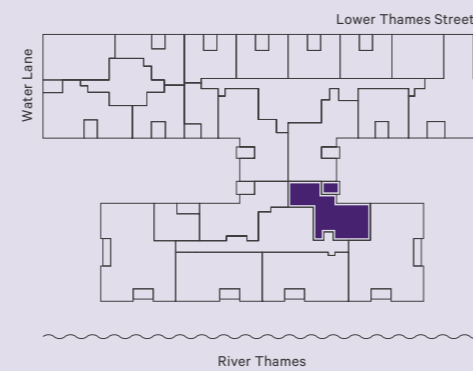
Living/Dining	5857 x 4343mm	19' 3" x 14' 3"
Kitchen	4343 x 1916mm	14' 3" x 6' 3"
Master Bedroom	3413 x 2958mm	11' 2" x 9' 8"
Dressing Room	2000 x 1288mm	6' 7" x 4' 3"
En suite	2563 x 2252mm	8' 5" x 7' 5"
Bedroom 2	3717 x 2645mm	12' 2" x 8' 8"
Shower Room	2398 x 1518mm	7' 10" x 5' 0"
Total	81.15 sq m	873 sq ft
Balcony	3221 x 1787mm	10' 7" x 5' 10"

FLOOR

FLOOR	APARTMENT
10	
9	
8	
7	
6	114
5	94
4	74
3	53
2	32
1	
G	

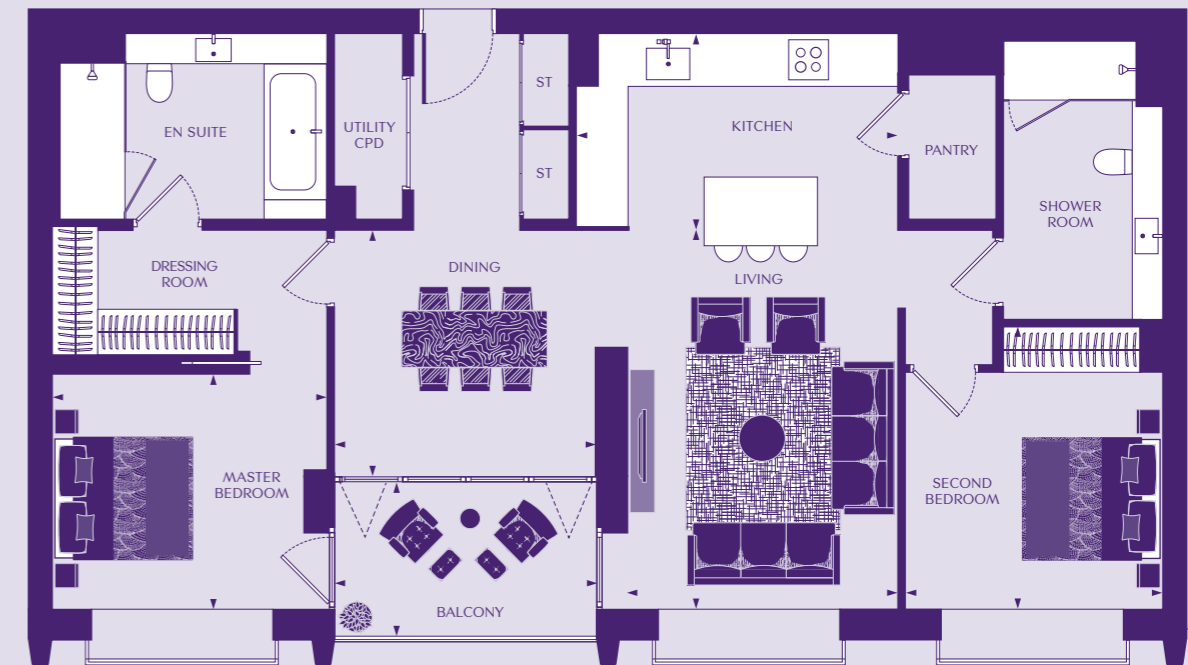
APARTMENT

APARTMENT LOCATION



TWO BEDROOM APARTMENT

APARTMENTS 34, 55, 76, 96, 116



DIMENSIONS

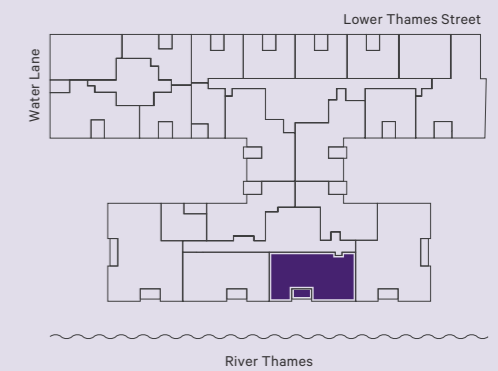
Living	5049 x 3522mm	16' 7" x 11' 7"
Dining	3402 x 3348mm	11' 2" x 11' 0"
Kitchen	4270 x 2712mm	14' 0" x 8' 11"
Master Bedroom	3592 x 3159mm	11' 9" x 10' 4"
Dressing Room	3665 x 1750mm	12' 0" x 5' 9"
En suite	3555 x 2603mm	11' 8" x 8' 6"
Bedroom 2	3798 x 3365mm	12' 6" x 11' 0"
Shower Room	3883 x 2085mm	12' 9" x 6' 10"
Total	105.93 sq m	1140 sq ft
Balcony	3568 x 1963mm	11' 8" x 6' 5"

FLOOR

FLOOR	APARTMENT
10	
9	
8	
7	
6	116
5	96
4	76
3	55
2	34
1	
G	

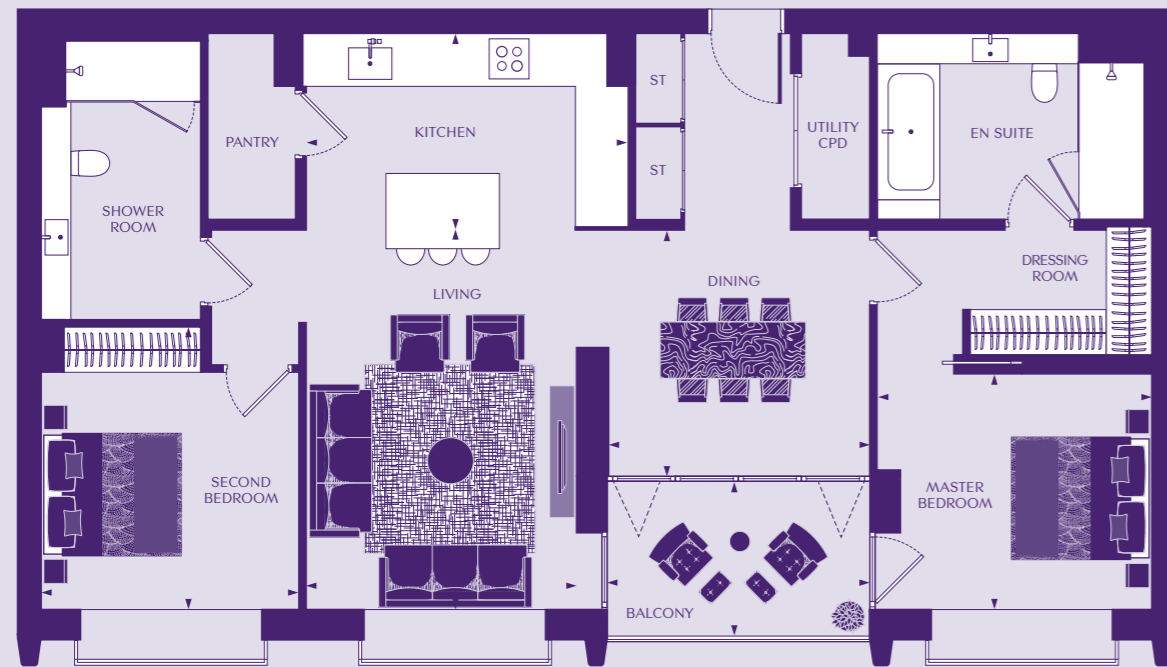
APARTMENT

APARTMENT LOCATION



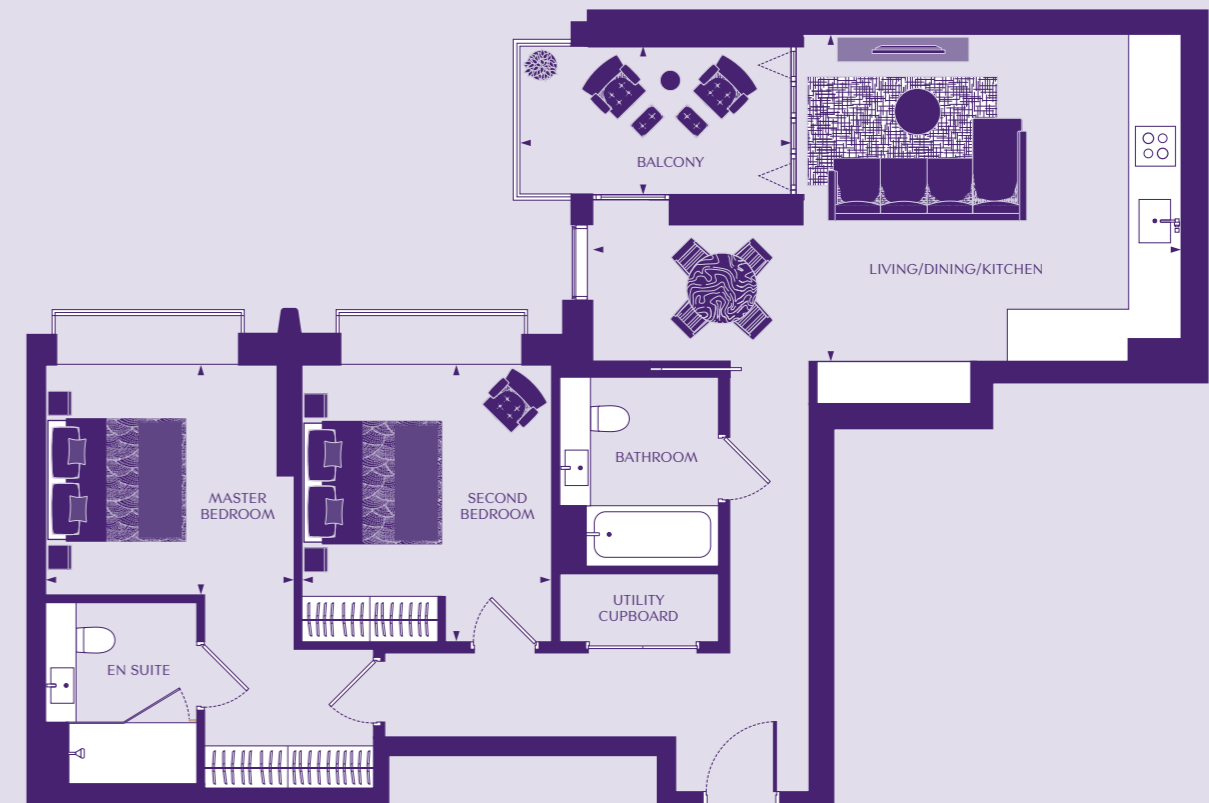
TWO BEDROOM APARTMENT

APARTMENTS 35, 56, 77, 97, 117



TWO BEDROOM APARTMENT

APARTMENTS 38, 59, 80, 100, 120



46
|
47

DIMENSIONS

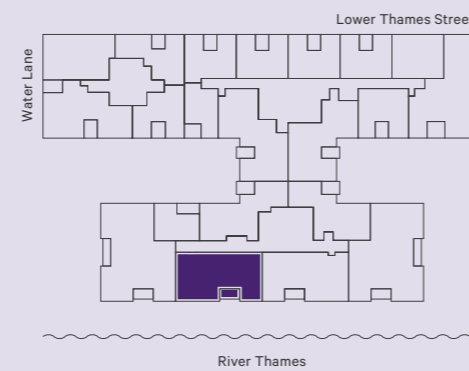
Living	4954 x 3523mm	16' 3" x 11' 7"
Dining	3407 x 3253mm	11' 2" x 10' 8"
Kitchen	4270 x 2652mm	14' 0" x 8' 8"
Master Bedroom	3588 x 3159mm	11' 9" x 10' 4"
Dressing Room	3661 x 1750mm	12' 0" x 5' 9"
En suite	3647 x 2603mm	12' 0" x 8' 6"
Bedroom 2	3733 x 3364mm	12' 3" x 11' 0"
Shower Room	3948 x 2085mm	12' 11" x 6' 10"
Total	106.09 sq m	1142 sq ft
Balcony	3568 x 1963mm	11' 8" x 6' 5"

FLOOR

10	_____
9	_____
8	_____
7	_____
6	_____ 117
5	_____ 97
4	_____ 77
3	_____ 56
2	_____ 35
1	_____
G	_____

APARTMENT

APARTMENT LOCATION



DIMENSIONS

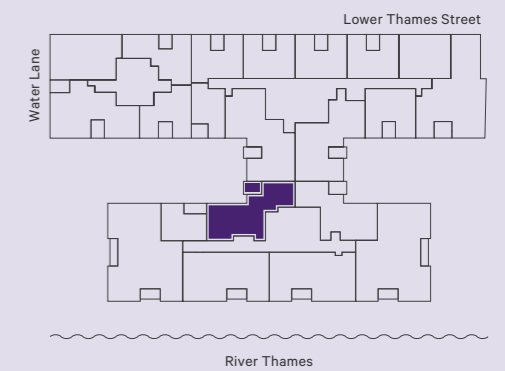
Living/Dining	5789 x 4357mm	19' 0" x 14' 4"
Kitchen	4357 x 2022mm	14' 4" x 6' 8"
Master Bedroom	3300 x 3111mm	10' 10" x 10' 2"
En suite	2590 x 2040mm	8' 6" x 6' 8"
Bedroom 2	3626 x 3193mm	11' 11" x 10' 6"
Bathroom	2361 x 2215mm	7' 9" x 7' 3"
Total	84.23 sq m	907 sq ft
Balcony	3659 x 1787mm	12' 0" x 5' 10"

FLOOR

10	_____
9	_____
8	_____
7	_____
6	_____ 120
5	_____ 100
4	_____ 80
3	_____ 59
2	_____ 38
1	_____
G	_____

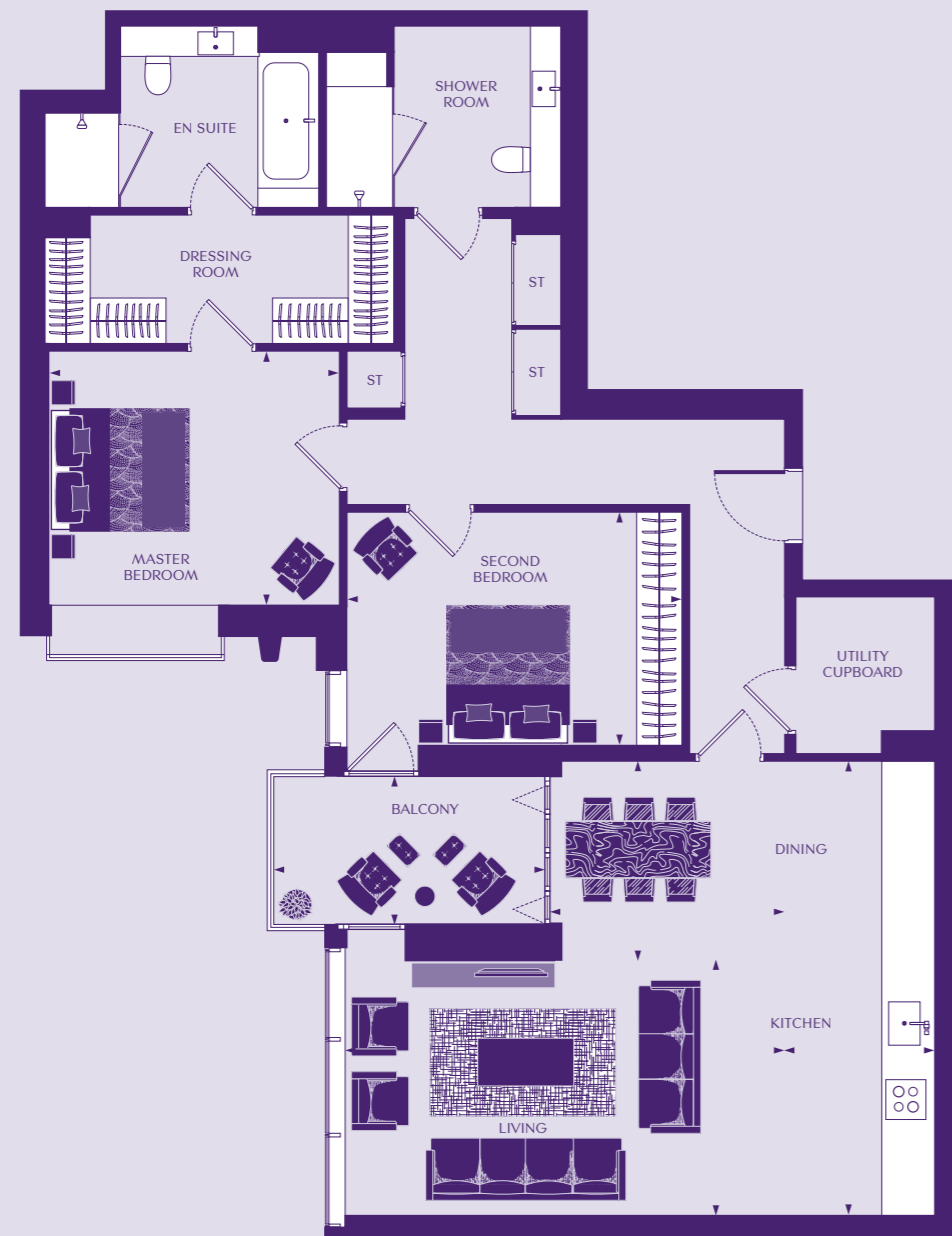
APARTMENT

APARTMENT LOCATION



TWO BEDROOM APARTMENT

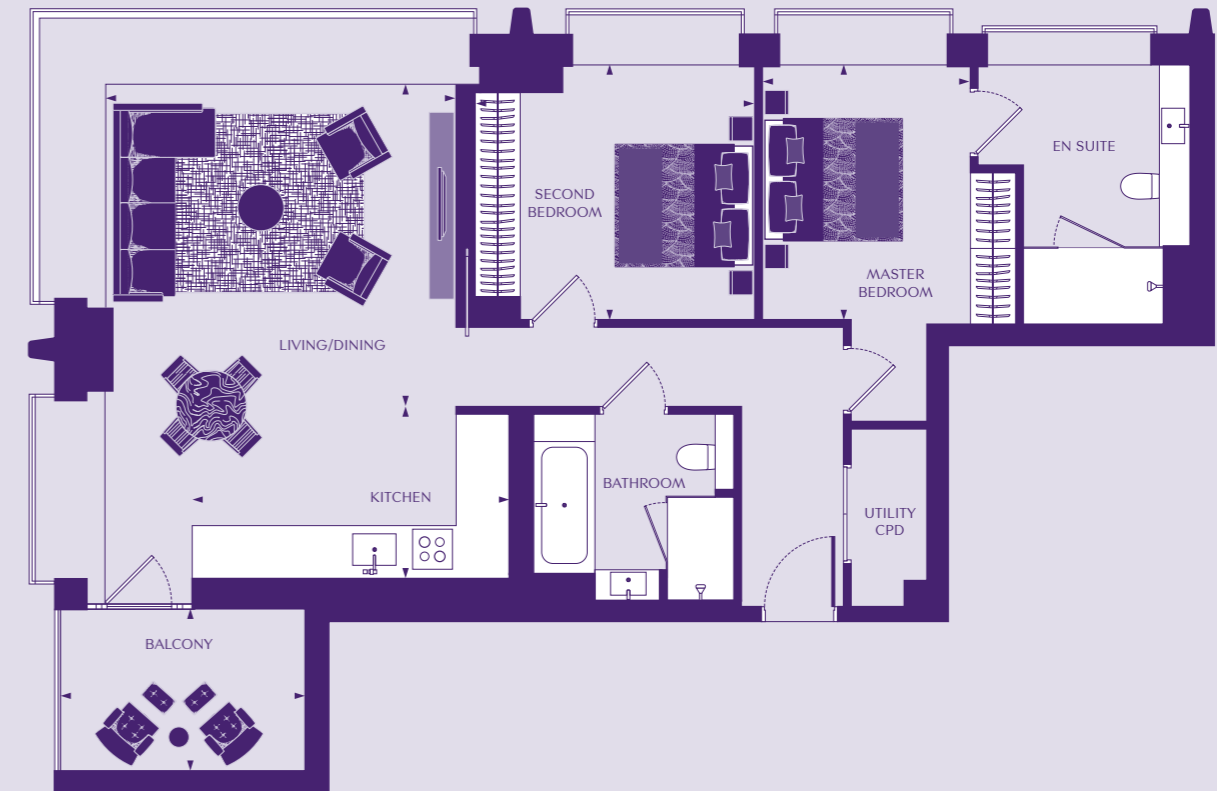
APARTMENTS 39, 60, 81, 101, 121, 139



48
|
49

TWO BEDROOM APARTMENT

APARTMENTS 64, 84, 104



48
|
49

DIMENSIONS

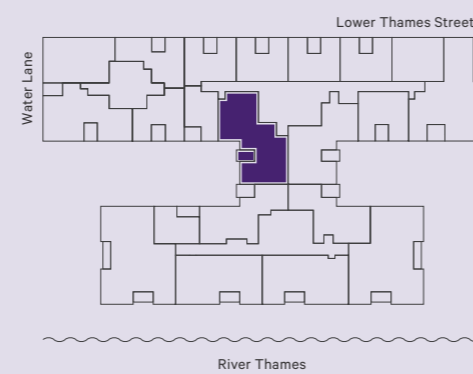
Living	6066 x 3295mm	19' 11" x 10' 10"
Dining	3086 x 2704mm	10' 1" x 8' 10"
Kitchen	6082 x 1982mm	19' 11" x 6' 6"
Master Bedroom	3847 x 3366mm	12' 7" x 11' 1"
Dressing Room	4618 x 1685mm	15' 2" x 5' 6"
En suite	3395 x 2425mm	11' 2" x 7' 11"
Bedroom 2	4420 x 3179mm	14' 6" x 10' 5"
Shower Room	3212 x 2425mm	10' 6" x 7' 11"
Total	114.79 sq m	1236 sq ft
Balcony	3659 x 1837mm	12' 0" x 6' 0"

FLOOR

10	_____
9	_____
8	_____
7	_____
6	_____ 139
5	_____ 121
4	_____ 101
3	_____ 81
2	_____ 60
1	_____ 39
G	_____

APARTMENT

APARTMENT LOCATION



DIMENSIONS

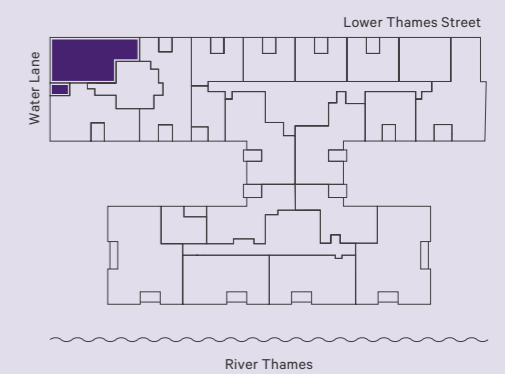
Living/Dining	4795 x 4609mm	15' 9" x 15' 1"
Kitchen	4222 x 1954mm	13' 10" x 6' 5"
Master Bedroom	3430 x 3386mm	11' 3" x 11' 1"
En suite	3406 x 2110mm	11' 2" x 6' 11"
Bedroom 2	3745 x 3386mm	12' 3" x 11' 1"
Bathroom	2626 x 2473mm	8' 7" x 8' 1"
Total	87.97 sq m	947 sq ft
Balcony Apt. 64, 84	3134 x 2180mm	10' 3" x 7' 2"
Balcony Apt. 104	3162 x 2210mm	10' 4" x 7' 3"

FLOOR

10	_____
9	_____
8	_____
7	_____
6	_____ 104
5	_____ 84
4	_____ 64
3	_____
2	_____
1	_____
G	_____

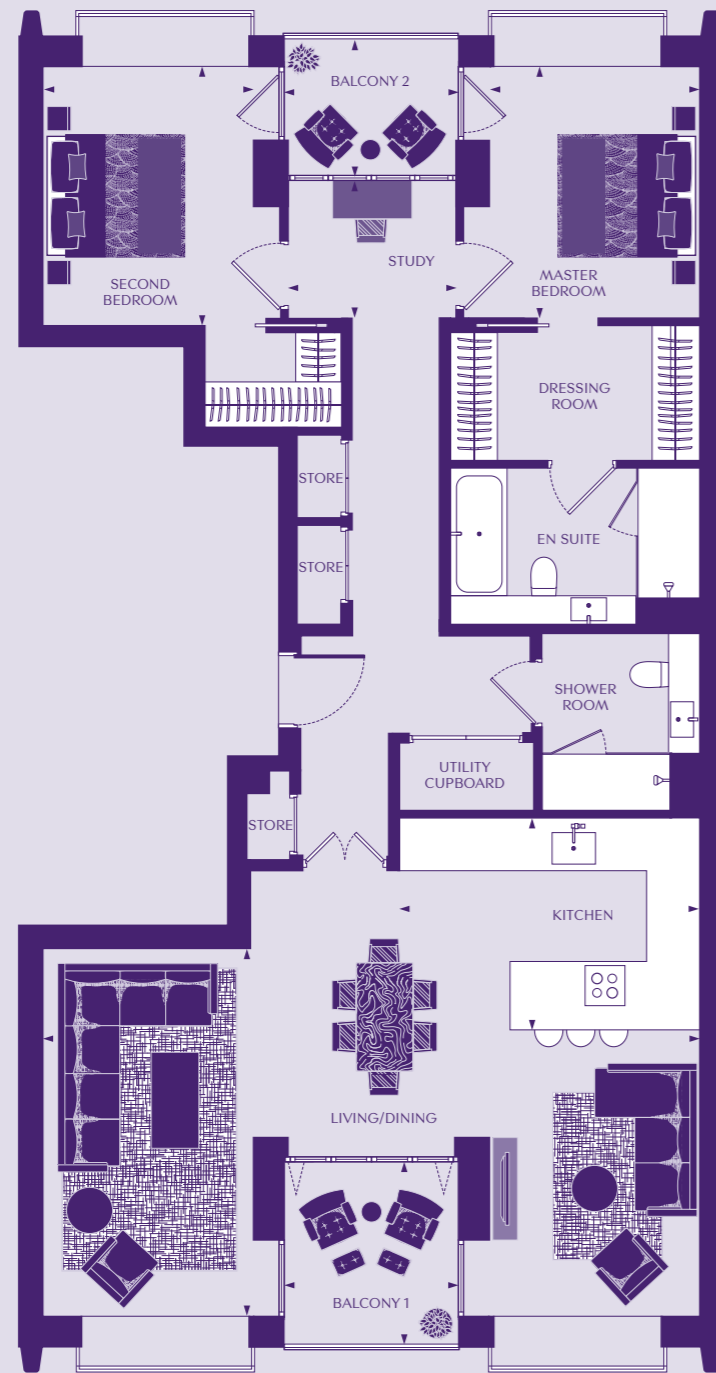
APARTMENT

APARTMENT LOCATION



TWO BEDROOM APARTMENT

APARTMENTS 65, 85, 105



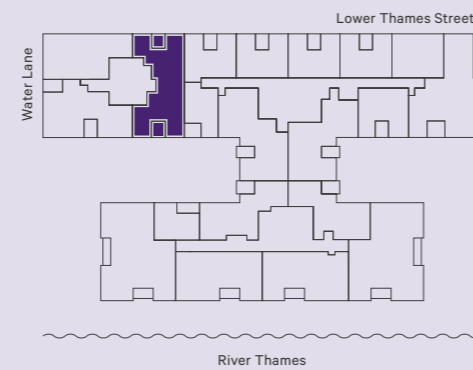
FLOOR

APARTMENT

APARTMENT LOCATION

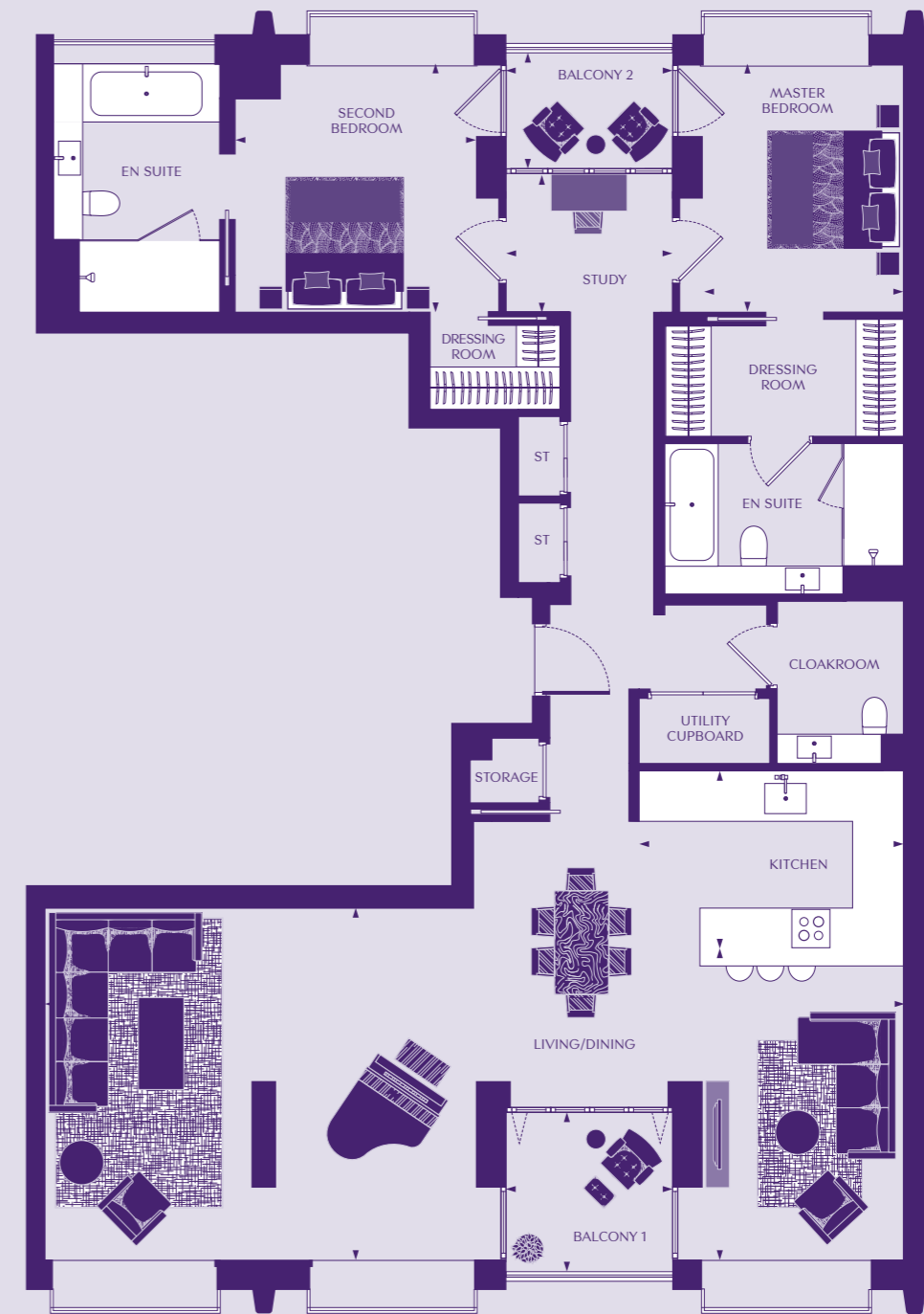
DIMENSIONS

Living/Dining	8585 x 4871mm	28' 2" x 16' 0"
Kitchen	3675 x 2830mm	12' 1" x 9' 3"
Master Bedroom	3365 x 2707mm	11' 0" x 8' 11"
Dressing Room	3337 x 1788mm	10' 11" x 5' 10"
En suite	3226 x 1972mm	10' 7" x 6' 6"
Bedroom 2	3385 x 2707mm	11' 1" x 8' 11"
Study	2215 x 1664mm	7' 3" x 5' 6"
Shower Room	2473 x 2252mm	8' 1" x 7' 5"
Total	108.04 sq m	1163 sq ft
Balcony 1 Apt. 65, 105	2400 x 2309mm	7' 10" x 7' 7"
Balcony 2 Apt. 65, 105	2400 x 1869mm	7' 10" x 6' 2"
Balcony 1 Apt. 85	2400 x 2172mm	7' 10" x 7' 2"
Balcony 2 Apt. 85	2400 x 1732mm	7' 10" x 5' 8"



TWO BEDROOM APARTMENT

APARTMENTS 125, 142



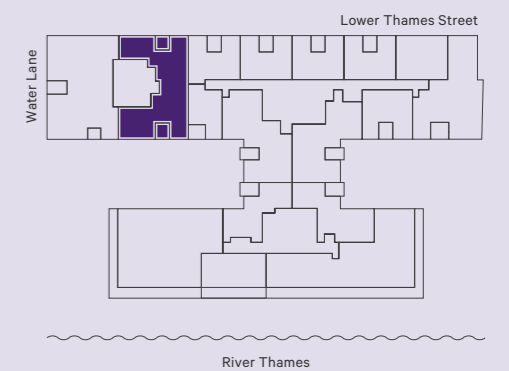
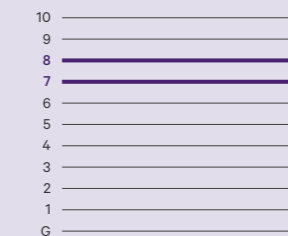
FLOOR

APARTMENT

APARTMENT LOCATION

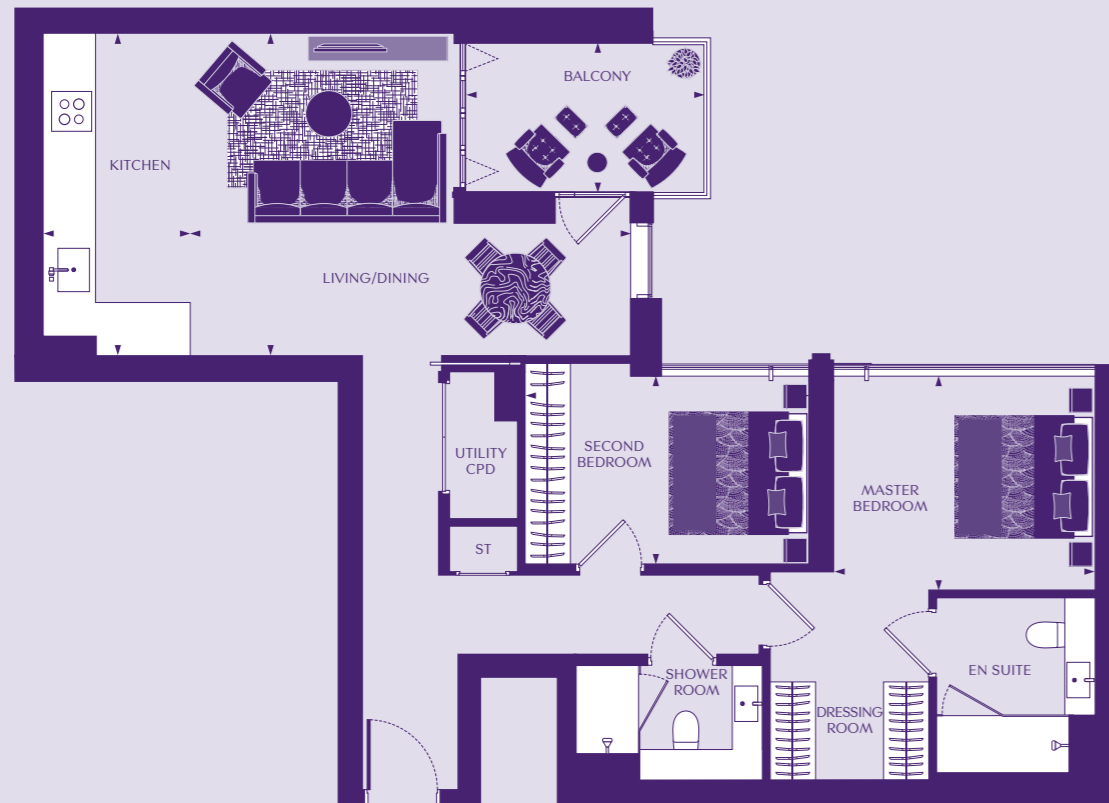
DIMENSIONS

Living	9077 x 4874mm	29' 9" x 16' 0"
Dining	4292 x 2716mm	14' 1" x 8' 11"
Kitchen	3682 x 2504mm	12' 1" x 8' 3"
Master Bedroom	3365 x 2707mm	11' 0" x 8' 11"
Dressing Room 1	3337 x 1788mm	10' 11" x 5' 10"
En suite 1	3139 x 1848mm	10' 4" x 6' 1"
Bedroom 2	3405 x 3385mm	11' 2" x 11' 1"
Dressing Room 2	1952 x 1393mm	6' 5" x 4' 7"
En suite 2	3364 x 2228mm	11' 0" x 7' 4"
Study	2215 x 1664mm	7' 3" x 5' 6"
Total	134.30 sq m	1446 sq ft
Balcony 1 Apt. 125	2400 x 2172mm	7' 10" x 7' 2"
Balcony 2 Apt. 125	2400 x 1732mm	7' 10" x 5' 8"
Balcony 1 Apt. 142	2400 x 2309mm	7' 10" x 7' 7"
Balcony 2 Apt. 142	2400 x 1869mm	7' 10" x 6' 2"



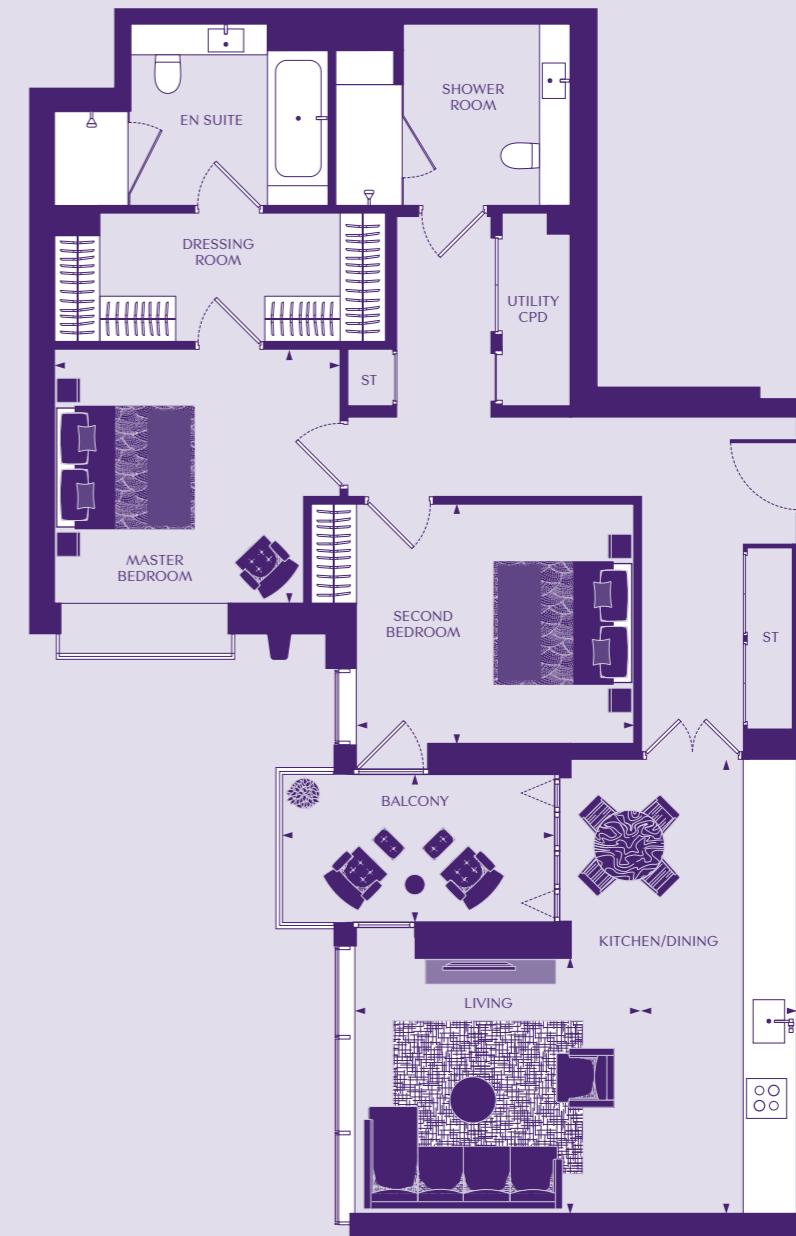
TWO BEDROOM APARTMENT

APARTMENT 134



TWO BEDROOM APARTMENT

APARTMENT 153



52
|
53



DIMENSIONS

Living/Dining	5866 x 4342mm	19' 3" x 14' 3"
Kitchen	4342 x 1945mm	14' 3" x 6' 5"
Master Bedroom	3413 x 2782mm	11' 2" x 9' 2"
Dressing Room	2000 x 1308mm	6' 7" x 4' 3"
En suite	2397 x 2251mm	7' 10" x 7' 5"
Bedroom 2	3717 x 2338mm	12' 2" x 7' 8"
Shower Room	2398 x 1812mm	7' 10" x 5' 11"
Total	79.32 sq m	854 sq ft
Balcony	3221 x 1787mm	10' 7" x 5' 10"

FLOOR



APARTMENT

134

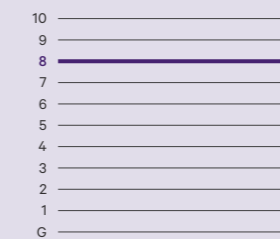
APARTMENT LOCATION



DIMENSIONS

Living/Dining	4078 x 3304mm	13' 5" x 10' 10"
Kitchen	5998 x 2050mm	19' 8" x 6' 9"
Master Bedroom	3743 x 3366mm	12' 3" x 11' 1"
En suite	3470 x 2424mm	11' 5" x 7' 11"
Bedroom 2	3913 x 3214mm	12' 10" x 10' 7"
Shower Room	3212 x 2425mm	10' 6" x 7' 11"
MEP	2571 x 725mm	8' 5" x 2' 5"
Total	100.15 sq m	1078 sq ft
Balcony	3659 x 1837mm	12' 0" x 6' 0"

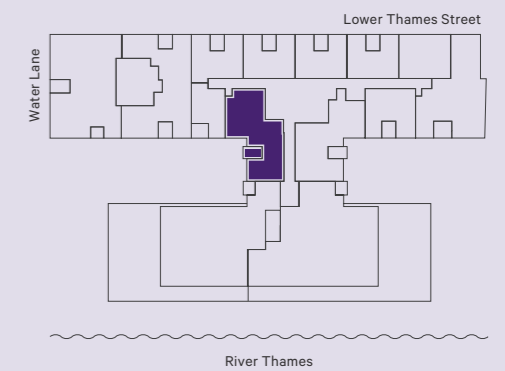
FLOOR



APARTMENT

153

APARTMENT LOCATION

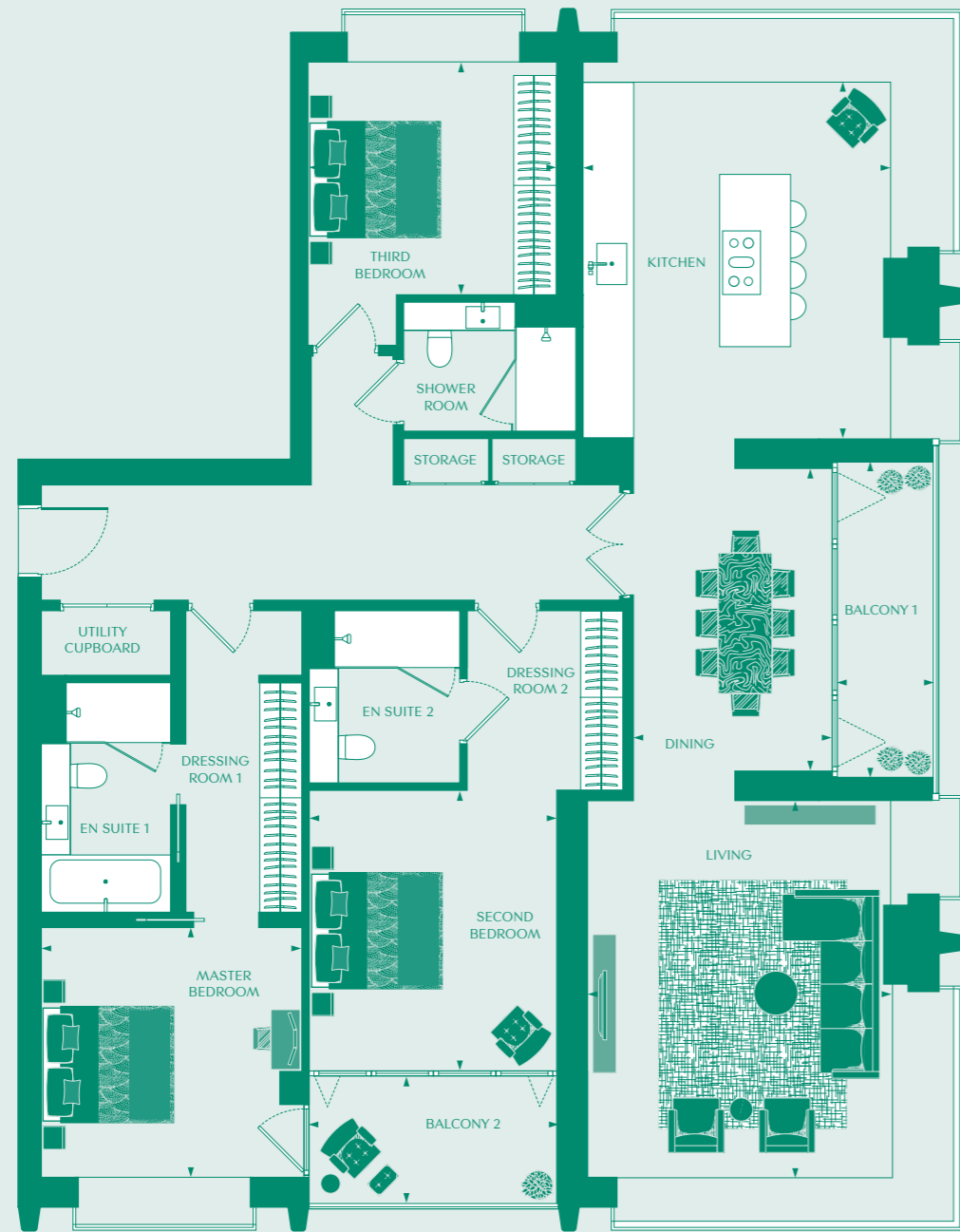




THREE BEDROOM
APARTMENTS

THREE BEDROOM APARTMENT

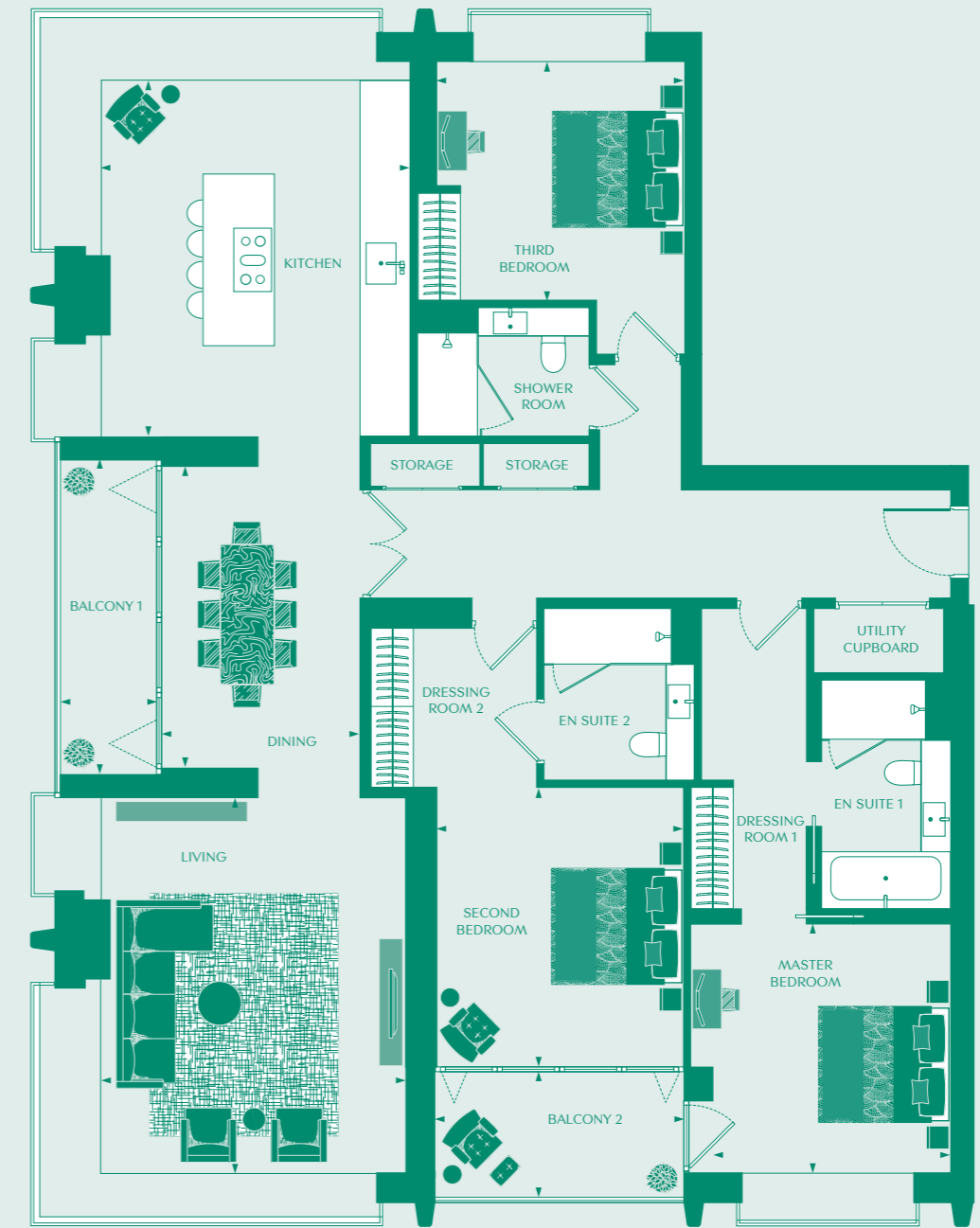
APARTMENTS 12, 33, 54, 75, 95, 115



56
|
57

THREE BEDROOM APARTMENT

APARTMENTS 15, 36, 57, 78, 98, 118



DIMENSIONS

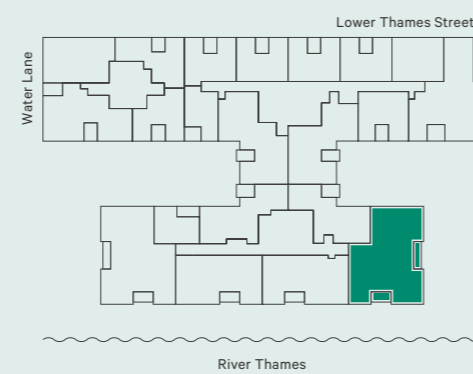
Living	5222 x 4105mm	17' 2" x 13' 6"
Dining	4215 x 2740mm	13' 10" x 9' 0"
Kitchen	5158 x 4278mm	16' 11" x 14' 0"
Master Bedroom	3456 x 3390mm	11' 4" x 11' 1"
Bedroom 2	3861 x 3407mm	12' 8" x 11' 2"
Bedroom 3	3407 x 3170mm	11' 2" x 10' 5"
Total		
Apartment 12	151.92 sq m	1,635 sq ft
Apartments 33, 54, 75, 95, 115	152.09sq m	1,637 sq ft
Balcony 1	4230 x 1145mm	13' 11" x 3' 9"
Balcony 2	3518 x 1688mm	11' 6" x 5' 6"

FLOOR



APARTMENT

APARTMENT LOCATION



DIMENSIONS

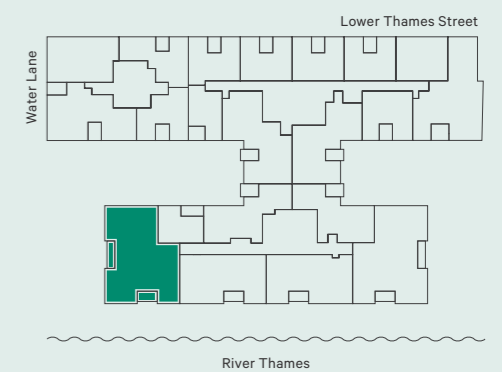
Living	5191 x 4150mm	17' 0" x 13' 7"
Dining	4284 x 2787mm	14' 1" x 9' 2"
Kitchen	5219 x 4149mm	17' 1" x 13' 7"
Master Bedroom	3637 x 3440mm	11' 11" x 11' 3"
Bedroom 2	3950 x 3352mm	13' 0" x 11' 0"
Bedroom 3	3412 x 3216mm	11' 2" x 10' 7"
Total		
Apartment 15	151.95 sq m	1,636 sq ft
Apartments 36, 57, 78, 98, 118	152.11 sq m	1,637 sq ft
Balcony 1	4230 x 1145mm	13' 11" x 3' 9"
Balcony 2	3517 x 1688mm	11' 6" x 5' 6"

FLOOR



APARTMENT

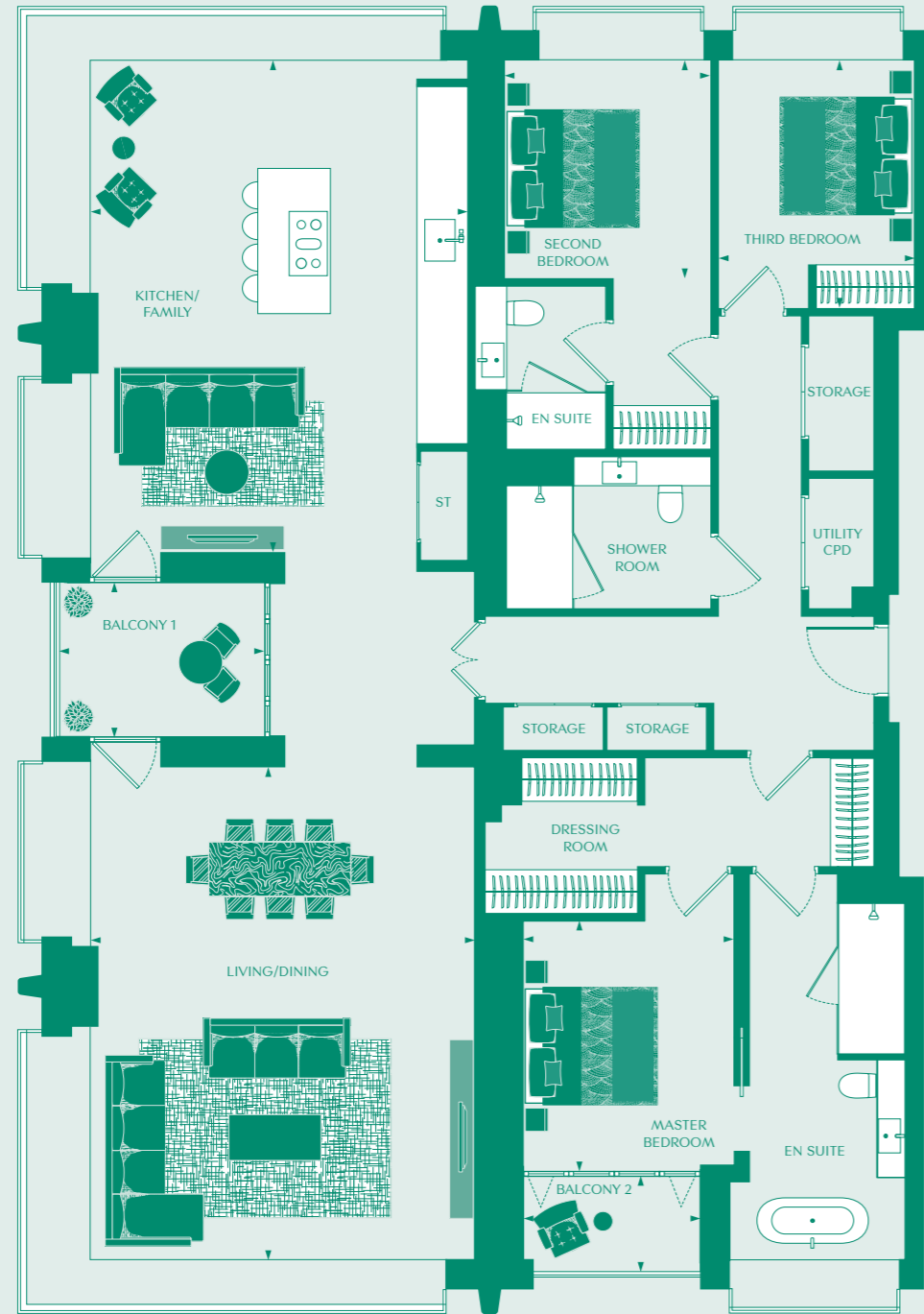
APARTMENT LOCATION



THREE BEDROOM APARTMENT

APARTMENTS 124, 141

58
|
59



DIMENSIONS

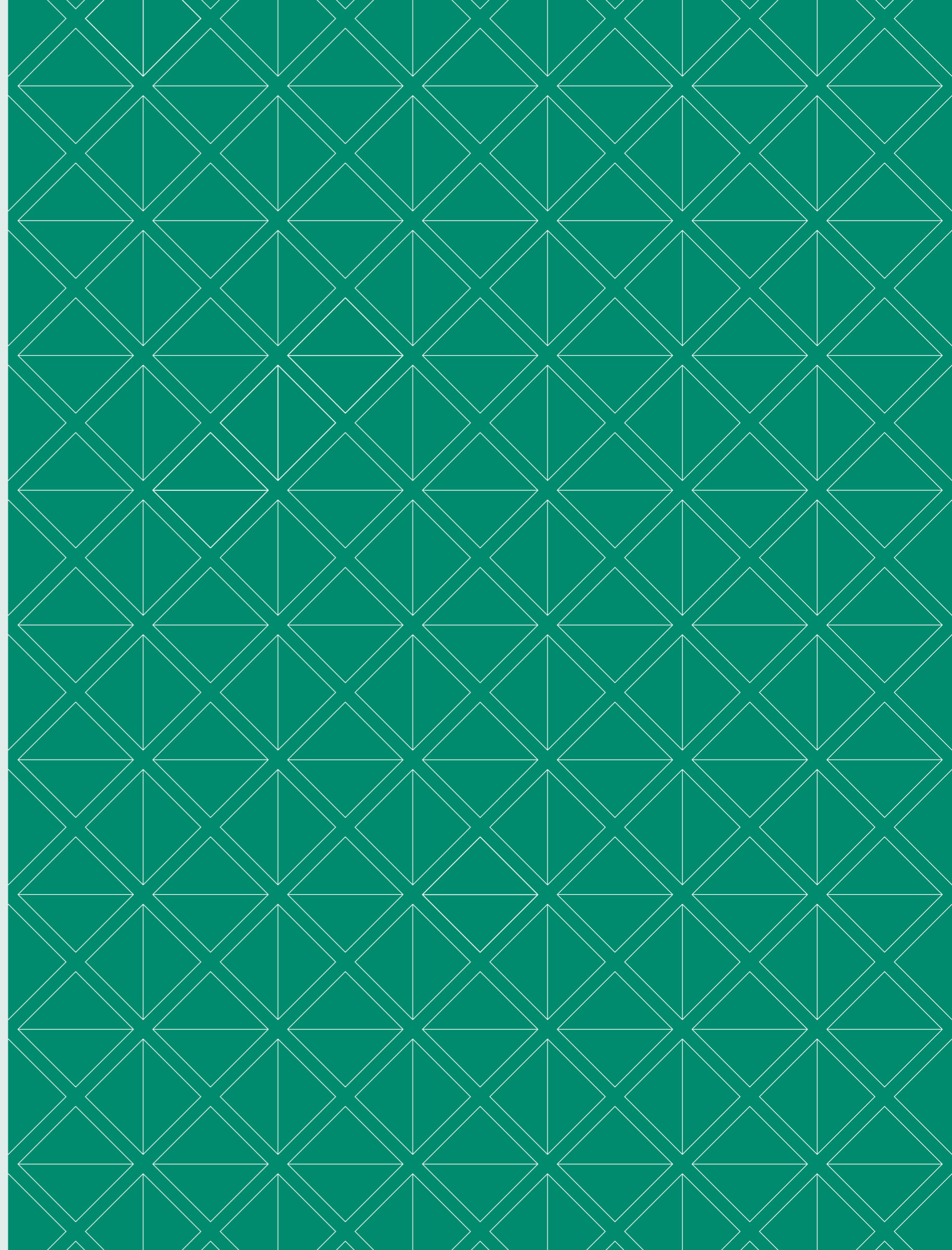
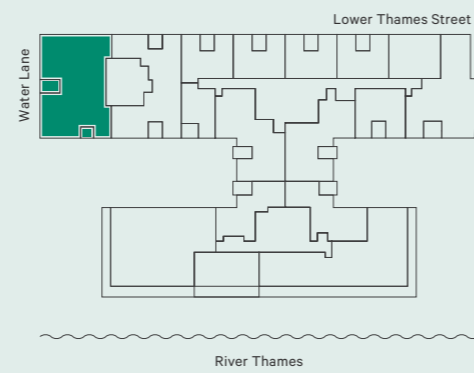
Living/Dining	6708 x 5242mm	22' 0" x 17' 2"
Kitchen/Family	6728 x 5126mm	22' 1" x 16' 10"
Master Bedroom	5699 x 3389mm	18' 8" x 11' 1"
Bedroom 2	2906 x 2762mm	9' 6" x 9' 1"
Bedroom 3	3397 x 2743mm	11' 2" x 9' 0"
Total	171.61 sq m	1,847 sq ft
Balcony 1	2813 x 2230mm	9' 3" x 7' 4"
Balcony 2	2307 x 1278mm	7' 7" x 4' 2"
Apartment 124		
Balcony 1	2954 x 2230mm	9' 8" x 7' 4"
Balcony 2	2307 x 1415mm	7' 7" x 4' 8"
Apartment 141		

FLOOR



APARTMENT

APARTMENT LOCATION



All residences at Landmark Place come with a choice of two colour palettes.* If you want to further enhance the light and space of your home then the selection of a lighter palette may be your preference. If you prefer richer and more contrasting colours then the carefully selected dark palette will beautifully complement the interior architecture.

**KITCHEN SPECIFICATION,
ONE BEDROOM SUITES**

- ◆ Individually designed handleless furniture
- ◆ Composite stone worktops
- ◆ Mirrored glass wall panelling
- ◆ Stainless steel undermounted sink with mixer tap and sprayer
- ◆ LED diffused lighting to underside of high wall units
- ◆ Combination microwave oven
- ◆ Warming drawer
- ◆ Flush-mounted touch-control induction hob
- ◆ Fully integrated extractor hood
- ◆ Fully integrated fridge with freezer compartment
- ◆ Fully integrated dishwasher
- ◆ Slimline wine cabinet
- ◆ Porcelain tiled flooring

*Subject to stage of construction

**KITCHEN SPECIFICATION,
ONE, TWO AND THREE
BEDROOM APARTMENTS**

- ◆ Individually designed handleless furniture
- ◆ Composite stone worktops
- ◆ Marble worktop to feature island or peninsula (subject to layout)
- ◆ Mirrored glass wall panelling
- ◆ Stainless steel undermounted sink with mixer tap and sprayer
- ◆ LED diffused lighting to underside of high wall units
- ◆ Single oven
- ◆ Combination microwave oven
- ◆ Warming drawer
- ◆ Flush-mounted touch- control induction hob
- ◆ Fully integrated extractor hood or flush ceiling extractor (subject to layout)
- ◆ Fully integrated fridge/freezer
- ◆ Fully integrated dishwasher
- ◆ Wine cabinet
- ◆ Porcelain tiled flooring



COMPUTER GENERATED IMAGE FOR INDICATIVE PURPOSES ONLY

KITCHEN IN DARK COLOUR PALETTE



COMPUTER GENERATED IMAGE FOR INDICATIVE PURPOSES ONLY

KITCHEN IN LIGHT COLOUR PALETTE



BATHROOM SPECIFICATION

- ◆ Contemporary white sanitary ware
- ◆ Wall-hung WC pan with concealed cistern and soft-close seat and cover
- ◆ White steel enamelled bath where applicable
- ◆ Individually designed marble vanity bench with illuminated, demisted mirror above incorporating concealed cupboard to side and shaver socket (subject to layout)
- ◆ Feature pendant light (subject to layout)
- ◆ Rainshower ceiling-mounted shower with separate hand-shower and wall-mounted recessed controls
- ◆ Walk-in style shower with contemporary glass enclosure where applicable
- ◆ Polished chrome, thermostatically controlled heated towel rail
- ◆ Polished marble to bath surround where applicable
- ◆ Porcelain tiling to floor and main walls
- ◆ Glass mosaic feature tiling to feature wall
- ◆ Recessed LED downlighters and LED strip lighting



COMPUTER GENERATED IMAGE FOR INDICATIVE PURPOSES ONLY

BATHROOM IN LIGHT COLOUR PALETTE



COMPUTER GENERATED IMAGE FOR INDICATIVE PURPOSES ONLY

BATHROOM IN DARK COLOUR PALETTE



HEATING AND COOLING

- ◆ Independent thermostatically controlled underfloor heating to all rooms
- ◆ Independent comfort-cooling to all reception rooms and bedrooms

GENERAL SPECIFICATION

- ◆ Porcelain floor tiling to hallways and reception rooms
- ◆ Soft sheen carpet to bedrooms
- ◆ Full-height white lacquer doors
- ◆ Full-height feature doors in a real wood veneer (subject to layout, to selected units only)
- ◆ Full-height panelling to feature walls in a real wood veneer (subject to layout, to selected units only)
- ◆ Individually designed fully fitted wardrobes to all bedrooms in a real wood veneer

ELECTRICAL SPECIFICATION

- ◆ Freestanding washer dryer to utility cupboard
- ◆ Whole-house ventilation system
- ◆ Remote control electric roller blinds to bay windows
- ◆ Recessed LED downlighters to all rooms
- ◆ LED strip lighting to feature areas
- ◆ LED lighting to all balconies and terraces
- ◆ Slimline sockets and switchplates throughout
- ◆ Sky+ connectivity (subject to subscription)
- ◆ Virgin Media connectivity (subject to subscription)
- ◆ Provision for connection to Arabsat and Hot Bird
- ◆ Telephone and data points to reception rooms and bedrooms
- ◆ Home automation system including lighting, heating, cooling, blind control and video entry system
- ◆ Mains supply smoke/heat detectors and sprinkler system

COMMUNAL AREAS

- ◆ 24-hour concierge service
- ◆ CCTV security system coverage
- ◆ Lifts to all floors
- ◆ Grand entrance foyer with seating area and fireplace
- ◆ Private residents' health suite including 20-metre swimming pool, sauna, steam room, treatment room and gymnasium
- ◆ Private residents' cinema room and lounge area
- ◆ Private residents' business suite
- ◆ Underground parking available to selected units*
- ◆ Electric car charging points available
- ◆ Underground cycle storage facilities
- ◆ Underground storage units available to selected units*

*Limited availability, at additional cost



COMPUTER GENERATED IMAGE FOR INDICATIVE PURPOSES ONLY



The Consumer Code for Home Builders (“the Code”), which came into effect in April 2010, applies to all Home Builders registered with the UK’s main new Home Warranty Bodies; NHBC, Premier Guarantee and LABC Warranty.

The Code gives protection and rights to purchasers of new Homes. It requires all new Home Buyers to be treated fairly and ensure they are fully informed about their purchase before and after they sign the contract.

The aim of the Code is for all new Home Buyers to:

- be treated fairly,
- know what levels of service to expect,
- be given reliable information about their purchase and their consumer rights before and after they move in, and
- know how to access speedy, low-cost dispute resolution arrangements to deal with complaints about breaches of the Code

The Code reinforces best practice among Home Builders to encourage a consistently high level of information and customer service. It builds on successful efforts already made by the industry to improve consumer satisfaction in recent years.

The Code covers every stage of the home-buying purchase – pre-contract, exchange of contract and during occupation.

As a 5 star housebuilder we are committed to the Consumer Code for Home Builders. For more information on the Consumer Code for Home Builders please visit <http://www.consumercode.co.uk/>

**CONSUMER
CODE FOR
HOME BUILDERS**

www.consumercode.co.uk



LANDMARK PLACE
AT TOWER BRIDGE EC3



PROJECT TEAM

DEVELOPER

BARRATT LONDON
PART OF BARRATT DEVELOPMENTS PLC
IN ASSOCIATION WITH THE CPC GROUP

ARCHITECTS

BROADWAY MALYAN
BROADWAYMALYAN.COM

INTERIOR DESIGN

BOWLER JAMES BRINDLEY
BOWLERJAMESBRINDLEY.COM

HERITAGE PARTNER



MUSEUMOFLONDON.ORG.UK

SALES TEAM



SAVILLS.CO.UK



KNIGHTFRANK.CO.UK

BARRATT
— LONDON —

barratlondon.com

NOTICE

Computer generated images, maps and development layouts are intended for illustrative purposes and should be treated as general guidance only. The features, designs, materials and visual depictions of and in our show homes and in our show home photography must be treated as general illustration and guidance. Images may also include upgrades which are available at extra cost. Furniture and furnishings are not included. They are subject to change from time to time without notice and their accuracy or completeness is not guaranteed. Nor are they intended to form part of any contract or warranty unless specifically incorporated into the contract. Please ask your Sales Advisor for the current specification. Individual features such as windows, brick and other materials' colours may vary, as may drainage, heating and electrical layouts. Floorplans are intended to give a general indication of the proposed floor layout only. The dimensions are accurate to within + or - 50mm. Dimensions should not be used for carpet or flooring sizes, appliance spaces or items of furniture. Please ask our Sales Advisor for details of the treatments specified for individual apartments. Specification may be subject to change as necessary and without notice. Development layouts and landscaping, specification, dimensions and computer generated images are not intended to form part of any contract or warranty unless specifically incorporated in writing into the contract. The development name; Landmark Place and building names are for marketing purposes only and may not be the designated postal address, which may be determined by The Post Office. All information in this document is correct to the best of our knowledge at the time of going to print January 2016.

