

United  
Kingdom

**Sotheby's**  
INTERNATIONAL REALTY

RAINSBOROUGH SQUARE, FULHAM

**£6,500,000**





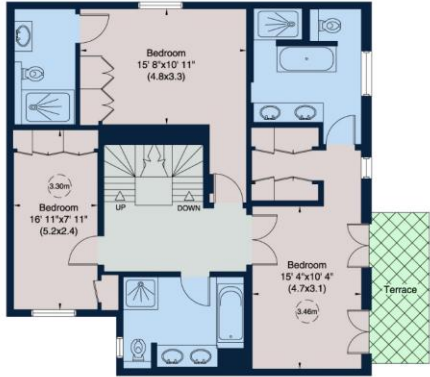
## **An exceptional six-bedroom town house set in this exclusive gated community close to Fulham Broadway**

The house has been finished to the highest of specifications including hardwood floors, Miele appliances and an abundance of natural light throughout. The kitchen opens onto the dining room with direct access on to the garden via bi-folding doors. The spacious reception room, like the kitchen, opens onto the garden perfect for entertaining.

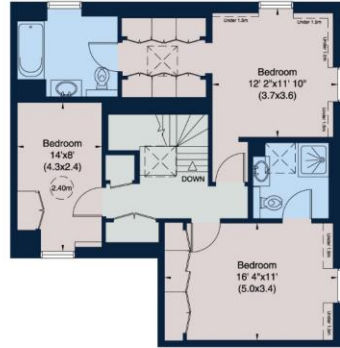
There is a large master suite with walk in wardrobe, four further bedrooms and four bathrooms. This house is the largest on the gated development at Rainsborough Square and further benefits from air conditioning, under floor heating and a private garage. The house has been meticulously designed, with great proportions throughout.

This exclusive development is located a short distance from the centre of Fulham with an array of restaurants, shops and bars. Both Fulham Broadway and Parsons Green tube stations are within walking distance.





First Floor



Second Floor



Lower Ground Floor



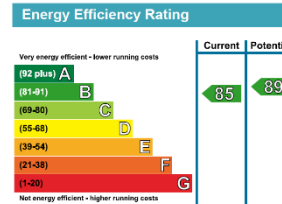
Ground Floor

Not to scale, for guidance only and must not be relied upon as a statement of fact. All measurements and areas are approximate only (and have been prepared in accordance with the current edition of the RICS Code of Measuring Practice).

### Rainsborough Square Farm Lane, SW6

Gross internal area (approx.)  
 386 Sq m (4160 Sq ft) Including Under 1.5m  
 385 Sq m (4142 Sq ft) Excluding Under 1.5m  
 For identification only, Not to Scale

Floor Plan by **capitalgroup** 020 8871 7722



Agents Note: Whilst every care has been taken to prepare these, they are for guidance purposes only. All measurements are approximate are for general guidance purposes only and whilst every care has been taken to ensure their accuracy, they should not be relied upon and potential buyers are advised to recheck the measurements

77-79 Ebury Street,  
London, SW1W 0NZ

[sothebysrealty.co.uk](http://sothebysrealty.co.uk)  
0207 495 9580, [london@sothebysrealty.co.uk](mailto:london@sothebysrealty.co.uk)

**Tenure: Freehold**  
Viewing by appointment with Sotheby's International Realty