



Mavelstone Close, Bromley, Kent BR1 2PJ

Guide Price £2,000,000 to £2,200,000 Freehold





Guide price range £2,000,000 to £2,200,000

**A STUNNING STATEMENT HOUSE - DOUBLE HEIGHT VAULTED CEILINGS, EXTENSIVE USE OF GLASS AND STRIKING ARCHITECTURAL FEATURES THROUGHOUT**

Dreamwood has been designed for lifestyle living and entertaining!

With an abundance of glass in the design to bring in the light and create a fabulous contemporary space this house stands out from the crowd and will suit a buyer who wants their home to make a statement.

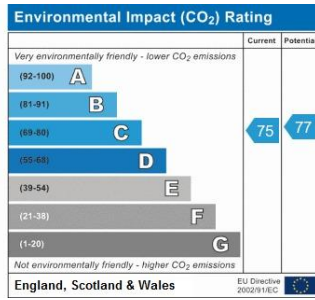
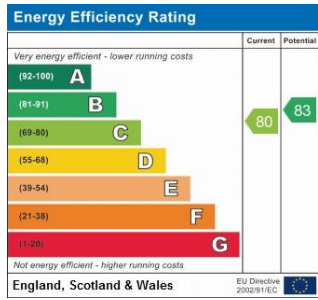
Offering over 6,600 sq ft of space (including garage) with up to six bedrooms, four en suites and a family bathroom, dressing room to master suite and two further dressing rooms; five reception rooms (including a ground floor cinema room) and a substantial garden, this is by all standards an outstanding family and entertaining home.

Situated in a quiet cul-de-sac in a favoured residential area, Dreamwood will suit all the family with Elmstead Woods station for London commuting and a good selection of both private and public schools in the vicinity including the popular Bullers Wood School - rated Outstanding (2011).

Viewing appointments are now available and we encourage you to take the time to view this first-hand to appreciate the exceptional interior and sizeable impressive plot.







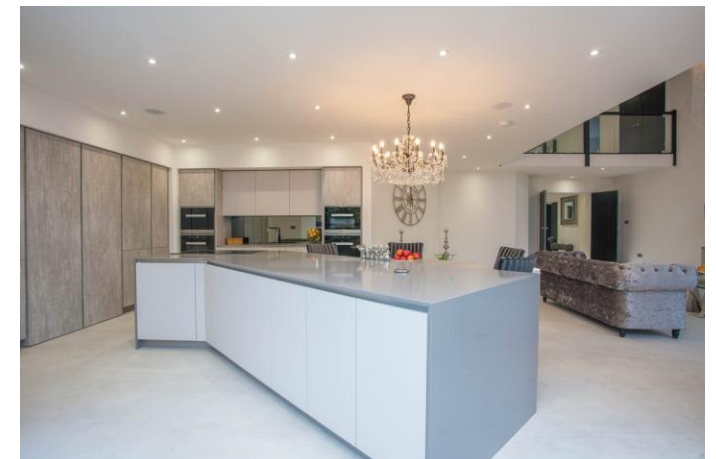
Please refer to

---

[www.jdmestateagents.com](http://www.jdmestateagents.com)

---

to view our full area guides



## Mavelstone Close

APPROX. GROSS INTERNAL FLOOR AREA 6621.24 SQFT / 615.13 SQM.INC GARAGE



This is for guidance only, not to scale and must not be relied upon as a statement of fact.  
Attention is drawn to the notice on these particulars.

