



search ends here

A stunning six bedroom
detached house in Chiswick

POA Freehold

Walpole Gardens
London

ASTON ROWE

In brief...

Style:	Double fronted house
Bedrooms:	6 Bedrooms
Living rooms:	4 Receptions
Area:	Chiswick
Outside:	Private garden
Parking:	Off street parking
Energy rating:	TBA



What it's like...

Aston Rowe are proud to present this truly stunning six bedroom double fronted house situated in the heart of Chiswick. Set across four floors the property benefits from a double reception room on the ground floor in addition to a dining room and extended kitchen as well as w/c and cloak room. The basement provides two work or study rooms, a utility room, wine cellar and bathroom, while the first floor comprises the Master bedroom with walk in wardrobe and en-suite, family bathroom and two additional double bedrooms. On the top floor are three further double bedrooms and additional bathroom. There is a large garden to the rear and off street parking for three cars at the front of the property.



Bear in mind...

The property has planning permission for an erection of a rear roof extension and roof window with a replacement roof window to front elevation. Erection of a single storey rear extension.





What the owner says...

This house is in a really great location for the local shops and transport links

“



Key features...

- Double fronted house
- 6 bedrooms
- Off street parking
- Planning permission to

Location

Walpole Gardens is located in a quiet residential road in Chiswick, this flat is ideally located a short walk from the amenities of the Chiswick High road and the Chiswick Park and Turnham Green

Distances

Shops Chiswick High Road 4 Mins

Station Chiswick Park Station 9 Mins walk

Park Turnham Green 1 Min walk

Schools Heathfield House School 2 Mins

Notes

.....

incomparable selling



Acton
 T. 020 8992 3600
 E. info@astonrowe.co.uk
 A. 103 Churchfield Road, W3 6AH

Brook Green & Hammersmith
 T. 020 7871 6997
 E. Brookgreen@astonrowe.co.uk
 A. 82 Shepherds Bush Road, W6 7PH

When we're open
 Mon to Fri: 8.30am - 8pm
 Saturday: 9am - 5pm
 Sunday & Late: by arrangement

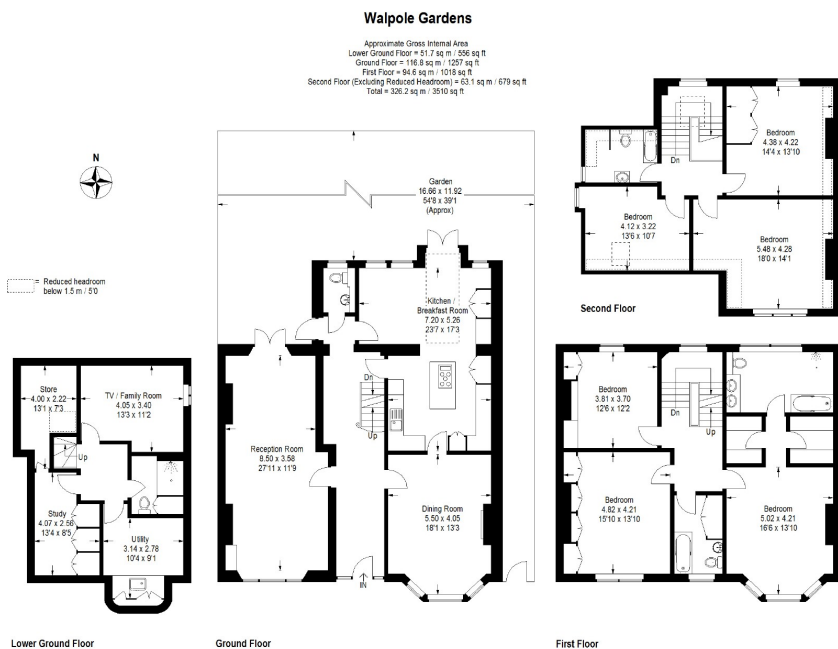


Illustration for identification purposes only, measurements are approximate, not to scale.
 Floorplans@astonrowe.com © 2017 (ID: 388725)