

Amber

a collection of luxury homes

strata



- verbier: (four bedroom home)
- tivoli: (four bedroom home)
- geneva: (three bedroom home)
- roma: (three bedroom home)
- cadiz: (three bedroom home)
- malmo: (three bedroom home)
- sofia: (three bedroom home)
- monaco: (two bedroom home)
- aix: (two bedroom home)
- colmar: (two bedroom home)
- vigo: (one bedroom home)

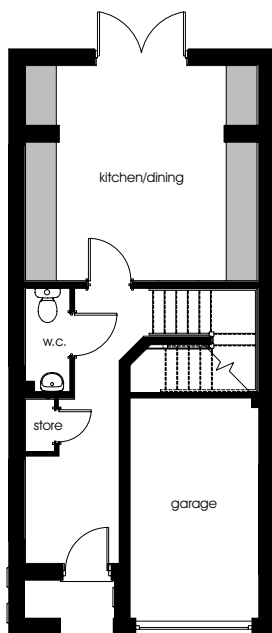
strata.co.uk

specification

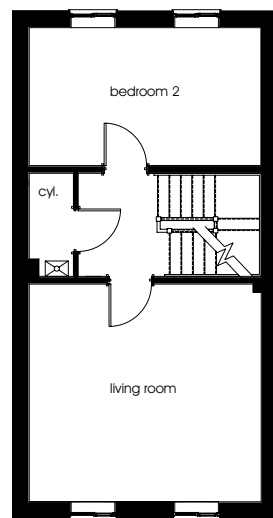
	aix two bed home	vigo two bed apt.	colmar two bed home	monaco two bed home	roma three bed home	sofia three bed home	cadiz three bed home	malmo three bed home	geneva three bed home	verbier four bed home	tivoli four bed home
NHBC warranty	●	●	●	●	●	●	●	●	●	●	●
Gas central heating with Ideal Logic boiler	●	●	●	●	●	●	●	●	●	●	●
Landscaped front gardens	●	●	●	●	●	●	●	●	●	●	●
Tarmac finished driveways	●	●	●	●	●	●	●	●	●	●	●
Cream UPVC windows	●	●	●	●	●	●	●	●	●	●	●
Front door with multi point lock	●	●	●	●	●	●	●	●	●	●	●
Smoke detectors	●	●	●	●	●	●	●	●	●	●	●
One television point & one telephone point	●	●	●	●	●	●	●	●	●	●	●
En suite bathroom to bedroom one				●	●	●	●	●	●	●	●
Contemporary design sanitaryware	●	●	●	●	●	●	●	●	●	●	●
Oak foil veneer internal doors	●	●	●	●	●	●	●	●	●	●	●
Choice of kitchen unit doors, handles & worktops	●	●	●	●	●	●	●	●	●	●	●
Stainless kitchen sink and mixer tap	●	●	●	●	●	●	●	●	●	●	●
Neff single electric oven & extractor & Fagor ceramic hob	●	●	●	●	●	●	●	●	●	●	●
Choice of Porcelanosa wall tiles	●	●	●	●	●	●	●	●	●	●	●
White emulsion paint finish to walls & ceilings	●	●	●	●	●	●	●	●	●	●	●
White gloss paint finish to woodwork	●	●	●	●	●	●	●	●	●	●	●

verbier

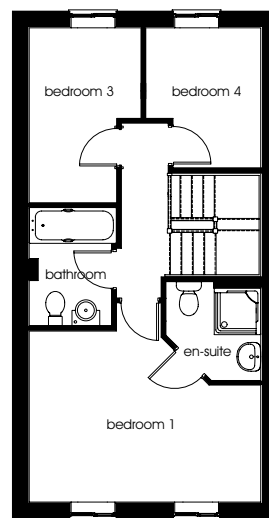
a four bedroom home



ground



first



second

ground

kitchen/dining
4510mm x 4183mm 14'10" x 13'9"

w.c.
862mm x 2005mm 2'10" x 6'7"

first

living room
4510mm x 4233mm 14'10" x 13'11"

bedroom 2
4510mm x 2682mm 14'10" x 8'10"

second

bedroom 1
4510mm x 3324mm 14'10" x 10'11"

en-suite
1922mm x 1852mm 6'4" x 6'1"

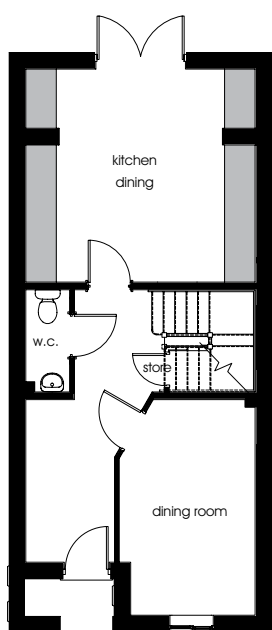
bedroom 3
2174mm x 3401mm 7'2" x 11'2"

bedroom 4
2243mm x 2692mm 7'4" x 8'10"

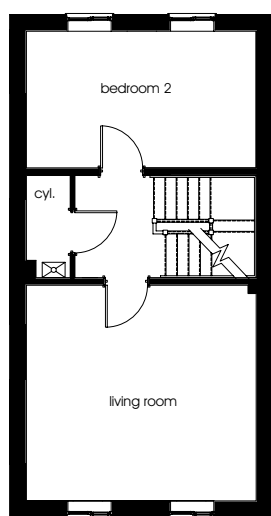
bathroom
1700mm x 2297mm 5'7" x 7'7"

tivoli

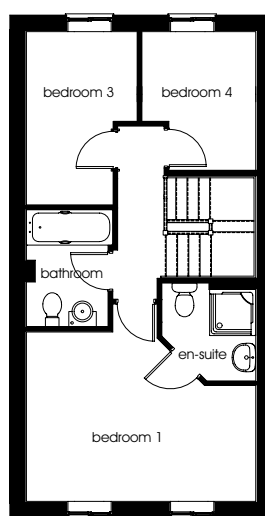
a four bedroom home



ground



first



second

ground

kitchen/dining
4510mm x 4183mm 14'10" x 13'9"
w.c. (max)
862mm x 2005mm 2'10" x 6'7"
dining room (max)
2675mm x 4235mm 8'9" x 13'11"

first

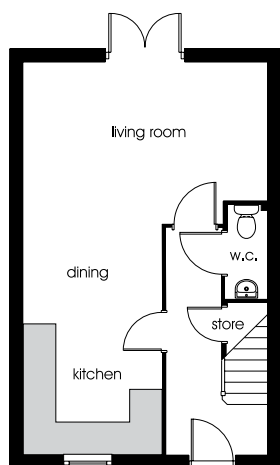
living room
4510mm x 4235mm 14'10" x 13'11"
bedroom 2 (max)
4510mm x 2685mm 14'10" x 8'10"

second

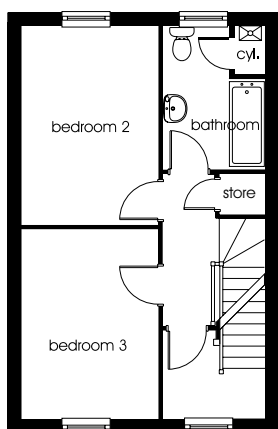
bedroom 1 (max)
4510mm x 3324mm 14'10" x 10'11"
en-suite (max)
1852mm x 1922mm 6'1" x 6'4"
bedroom 3
2174mm x 3400mm 7'2" x 11'2"
bedroom 4
2243mm x 2682mm 7'4" x 8'10"
bathroom (max)
1700mm x 2297mm 5'7" x 7'7"

geneva

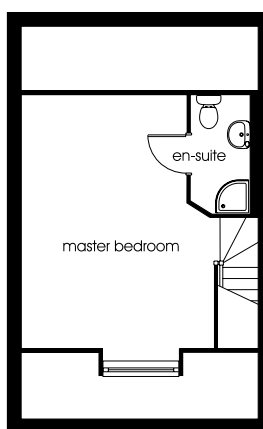
a three bedroom home



ground



first



second

ground

kitchen/dining (max)
2750mm x 4618mm 9'0" x 15'2"

living room (max)
4847mm x 3213mm 15'11" x 10'7"

w.c.
915mm x 1939mm 3'0" x 6'4"

first

bedroom 2
2732mm x 3967mm 9'0" x 13'0"

bedroom 3
2732mm x 3776mm 9'0" x 12'5"

bathroom
2038mm x 2773mm 6'8" x 9'1"

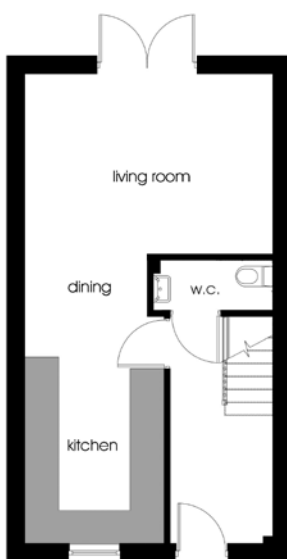
second

master bedroom
3856mm x 5933mm 12'8" x 19'6"

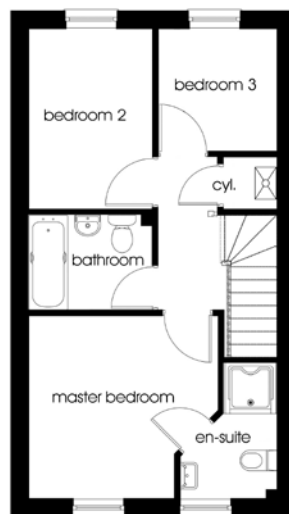
en-suite
1564mm x 2681mm 5'2" x 8'10"

roma

a three bedroom home



ground



first

ground

living room
4378mm x 3193mm 14'5" x 10'6"

kitchen/dining (max)
2472mm x 5087mm 8'1" x 16'8"

w.c.
2108mm x 888mm 6'11" x 2'11"

first

master bedroom (max)
3360mm x 3206mm 11'0" x 10'6"

en-suite (max)
1706mm x 2345mm 5'7" x 7'8"

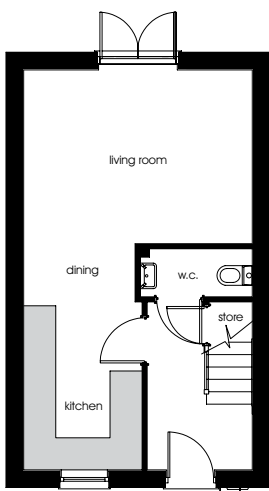
bedroom 2
2345mm x 3193mm 7'8" x 10'6"

bedroom 3
1941mm x 2155mm 6'4" x 7'1"

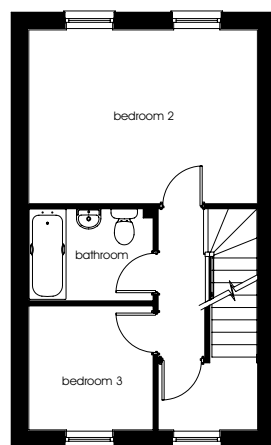
bathroom
2345mm x 1695mm 7'8" x 5'7"

cadiz

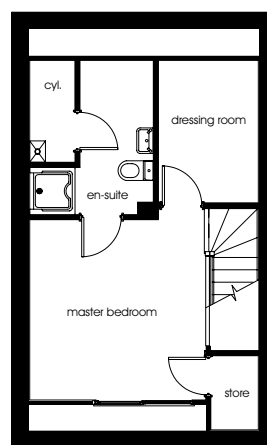
a three bedroom home



ground floor



first floor



second floor

ground

living room
4209mm x 3198mm 13'10" x 10'6"
kitchen/dining (max)
2181mm x 4162mm 7'2" x 13'8"
w.c.
2062mm x 885mm 6'9" x 2'11"

first

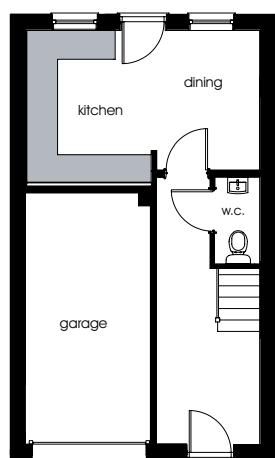
bedroom 2
4209mm x 3201mm 13'10" x 10'6"
bathroom
2288mm x 1695mm 7'6" x 5'7"
bedroom 3
2288mm x 2281mm 7'6" x 7'6"

second

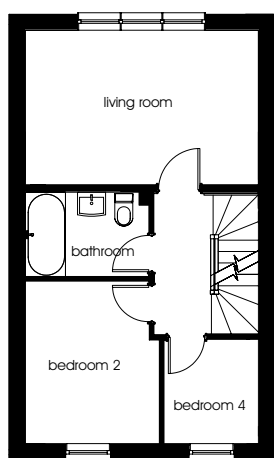
master bedroom (max)
4219mm x 3317mm 13'10" x 10'11"
en-suite
1351mm x 2853mm 4'5" x 9'4"
dressing room
1839mm x 2621mm 6' x 8'7"

malmö

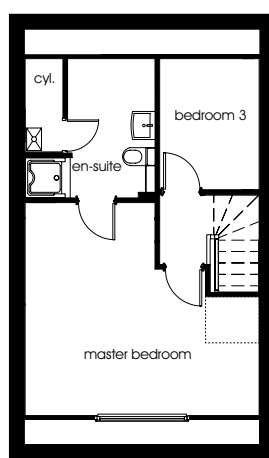
a four bedroom home



ground



first



second

ground

kitchen/dining
4658mm x 3032mm 15'4" x 9'11"

w.c.
1732mm x 905mm 5'8" x 3'0"

first

living room
4658mm x 3103mm 15'4" x 10'2"

bedroom 4
1889mm x 2075mm 6'2" x 6'10"

bedroom 2
2677mm x 3204mm 8'9" x 10'6"

bathroom
2477mm x 1710mm 8'2" x 5'7"

second

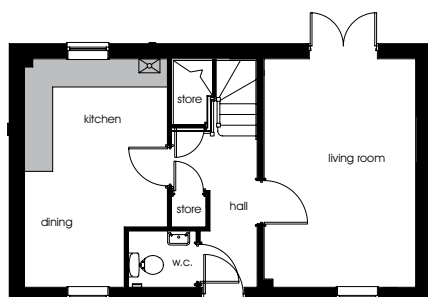
master bedroom
3607mm x 4257mm 11'10" x 14'0"

en-suite
1750mm x 2786mm 5'9" x 9'2"

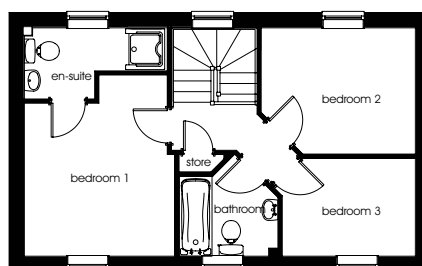
bedroom 3
1989mm x 2588mm 6'6" x 8'6"

sofia

a three bedroom home



ground



first

ground

kitchen/dining
3047mm x 4870mm 10'0" x 16'0"

w.c.
1444mm x 1198mm 4'9" x 3'11"

living room
3230mm x 4870mm 10'7" x 16'0"

first

bedroom 1 (max)
3210mm x 3861mm 10'6" x 12'8"

en-suite (max)
2158mm x 1519mm 7'1" x 5'0"

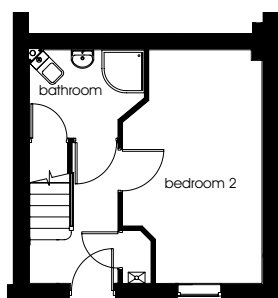
bedroom 2
3290mm x 2692mm 10'10" x 8'10"

bedroom 3
2840mm x 2085mm 9'4" x 6'10"

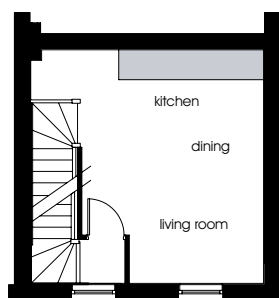
bathroom
2104mm x 2173mm 6'11" x 7'11"

monaco

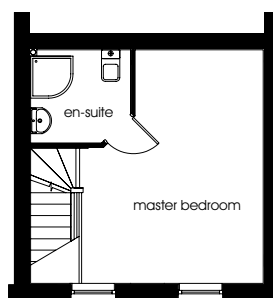
a two bedroom home



ground floor



first floor



second floor

ground

bedroom 2 (max)

2796mm x 4681mm 9'2" x 15'4"

bathroom (max)

2305mm x 1767mm 7'7" x 5'10"

first

living room/kitchen

3638mm x 4680mm 11'11" x 15'4"

second

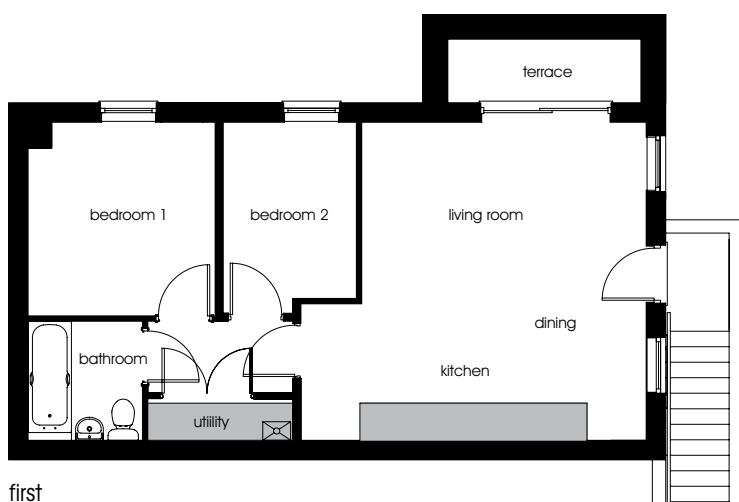
master bedroom

3638mm x 4680mm 11'11" x 15'4"

en-suite

2004mm x 1852mm 6'7" x 6'1"

aix a two bedroom home

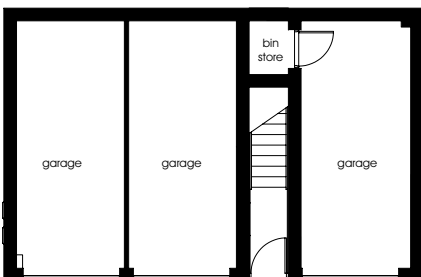


first

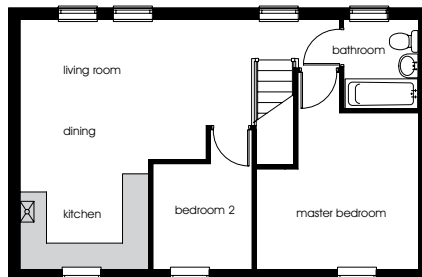
first

- kitchen/dining/living room (max)
5569mm x 5127mm 18'3" x 16'10"
- utility
2335mm x 672mm 7'8" x 2'2"
- bathroom
1843mm x 1920mm 6'1" x 6'4"
- bedroom 1
3016mm x 3121mm 9'11" x 10'3"
- bedroom 2 (max)
2146mm x 3078mm 7'1" x 10'1"

colmar 2 a two bedroom home



ground

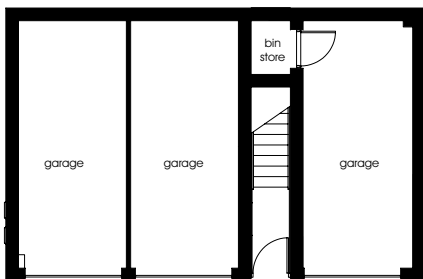


first

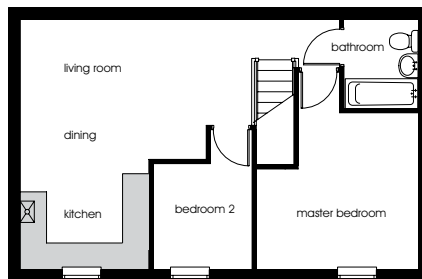
first

- living room/dining (max)
5413mm x 3300mm 17'9" x 10'10"
- kitchen (max)
3047mm x 2526mm 10'0" x 8'4"
- master bedroom (max)
3789mm x 4625mm 12'5" x 15'2"
- bedroom 2 (max)
2286mm x 3273mm 7'6" x 10'9"
- bathroom (max)
1730mm x 2082mm 6'10" x 5'8"

colmar a two bedroom home



ground



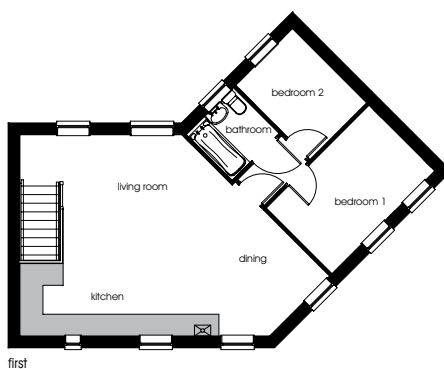
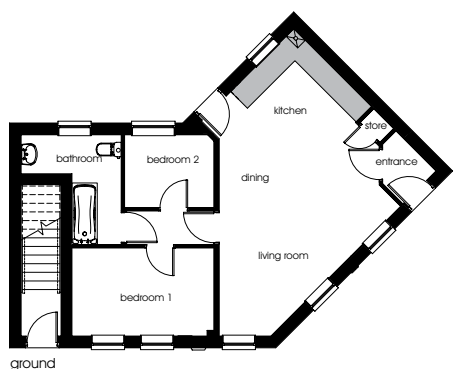
first

first

- living room/dining (max)
5413mm x 3300mm 17'9" x 10'10"
- kitchen (max)
3047mm x 2526mm 10'0" x 8'4"
- master bedroom (max)
3789mm x 4625mm 12'5" x 15'2"
- bedroom 2 (max)
2286mm x 3273mm 7'6" x 10'9"
- bathroom (max)
1730mm x 2082mm 5'8" x 6'10"

vigo

a two bedroom apartment



ground

kitchen/dining/living room (max)
6820mm x 5550mm 22'5" x 18'3"

master bedroom (max)
3890mm x 2428mm 12'9" x 8'0"

bedroom 2 (max)
2463mm x 2007mm 8'1" x 6'7"

bathroom (max)
2759mm x 3029mm 9'1" x 9'11"

first

kitchen/dining/living room
8541mm x 5550mm 28'1" x 18'3"

master bedroom (max)
4008mm x 2560mm 13'2" x 8'5"

bedroom 2
2210mm x 2897mm 7'3" x 9'6"

bathroom
1832mm x 1785mm 6'0" x 5'10"