

Parkwest

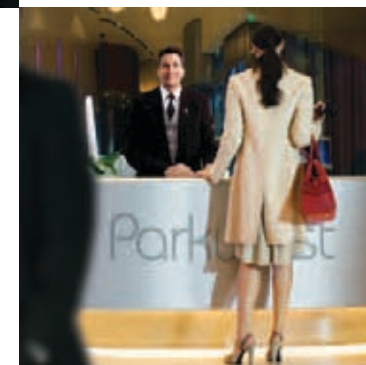
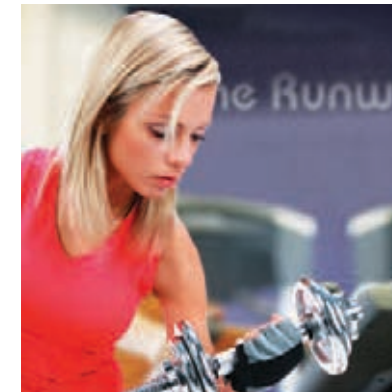


ST·GEORGE

west drayton london



21st century living in an international location



Welcome to Parkwest. A world class destination

CONTENTS	
Welcome to Parkwest	4
St George	6
Perfectly connected	8
Putting West Drayton on the map	10
The world on your doorstep	12
Crossrail	14
Get connected	16
Designed for living	18
Extraordinary apartments	20
Luxury bathrooms	22
Landscaping	24
The bigger picture: Site plan	28
The Parkwest gym	30
Stockley Park	32
Local restaurants	34
The Olympic connection	36
Brunel University	40
Sustainability & awards	42





It's not just an apartment.
It's **so much more...**

Living at Parkwest you get so much more than superb new stylish 1, 2 and 3 bedroom contemporary apartments. You benefit from St George's reputation for design and innovation.

Set in their own beautifully landscaped grounds the apartments enjoy luxury fixtures throughout, from the fitted kitchens to beautifully appointed bathrooms and bedrooms.

Living here is almost like living in the comfort of a hotel. A feeling we've enhanced by having an outstanding range of services for you to enjoy. Our Parkwest concierge is there to welcome you and make your life easier. You can work away the stresses of the day at the on-site gym or simply relax in one of the tranquil open spaces you'll discover throughout the grounds.

Welcome to the **St George** lifestyle

London's premier developer
creates perfect places to live

How would you like to upgrade your lifestyle? To enjoy all those luxuries that you know you deserve. There's only one thing to do: land yourself an apartment at Parkwest.

St George has created a brand new community within its own landscaped grounds. The watchwords are quality, flair and contemporary elegance. It's all designed to give you a living experience that's second to none. Your apartment is a modern masterpiece. Clean lines and light spaces create a stylish and comfortable living environment, overlooking manicured squares and gardens.

At St George we understand what you expect from your apartment and this is reflected in the level of detail we go to when planning our developments. We hope that you enjoy your life at Parkwest as much as we did bringing the development to life.



ST · GEORGE

Other St George developments
clockwise from top left:
Putney Wharf
Imperial Wharf
St George Wharf
Battersea Reach



Perfectly connected

If you want great travel links you'll be hard pushed to beat Parkwest - from global connections via nearby Heathrow to trips into the West End, City or Docklands by train and tube. Even the Eurostar terminal at St Pancras International is within easy reach. If you need to travel by car you've got the M4 and M25 on your doorstep with onward connections to the whole motorway network.

Parkwest

Stockley Park 3 mins

Brunel University 5 mins

Heathrow 5 mins

Knightsbridge 25 mins

Oxford Street 35 mins

St Pancras International 48 mins

Canary Wharf 60 mins

Putting West Drayton on the map

The location of Parkwest means you can enjoy the best of city and country living. The greenest part of the capital is in fact, West London.

Everyone knows about Kew Gardens with its iconic Palm House but less famous are the likes of Osterley Park, Syon Park or Gunnersbury Park, yet, they may already be familiar to you. Over the years, these elegant, historic locations have been the backdrop for some of Britain's biggest films like The Madness of King George and Gosforth Park.

There are grand country houses set in acres of rolling parkland. Visitors are rewarded not just with the amazing architecture – the Great Conservatory at Syon Park has to be seen to be believed – but also by landscaped grounds and formal gardens. Heading west you can enjoy the cosmopolitan buzz of Chiswick, just twenty minutes from Parkwest, and a hotspot for many West Londoners with its wide choice of fashionable bars, cafes and restaurants.

Moving towards the capital, the world famous Hyde Park, Regent's Park and St James's Park make great places to relax or picnic on long summer days. For nature lovers West London offers any number of lakes, canals, heaths, woodlands, wetlands and nature reserves to explore.



The **world** on your doorstep

Wherever you're travelling to, you'll find it easy and convenient. Air, road, rail and tube connections are all only moments away from Parkwest.

The new Terminal Five at Heathrow airport opened in March 2008. All British Airways flights from Heathrow depart from here and over 30 million people a year are expected to fly from this new state of the art terminal. Its size is breath-taking, covering the equivalent of 50 football pitches, or the size of Hyde Park.

This makes Parkwest an ideal location for the international traveller and as an investment opportunity.

Crossrail linking Parkwest to the heart of London and beyond

Crossrail is the new high frequency, convenient and accessible railway for London. From 2017, Crossrail will travel from Maidenhead and Heathrow in the west to Shenfield and Abbey Wood in the east via new twin tunnels under central London. It will link Heathrow Airport, the West End, the City of London and Canary Wharf.

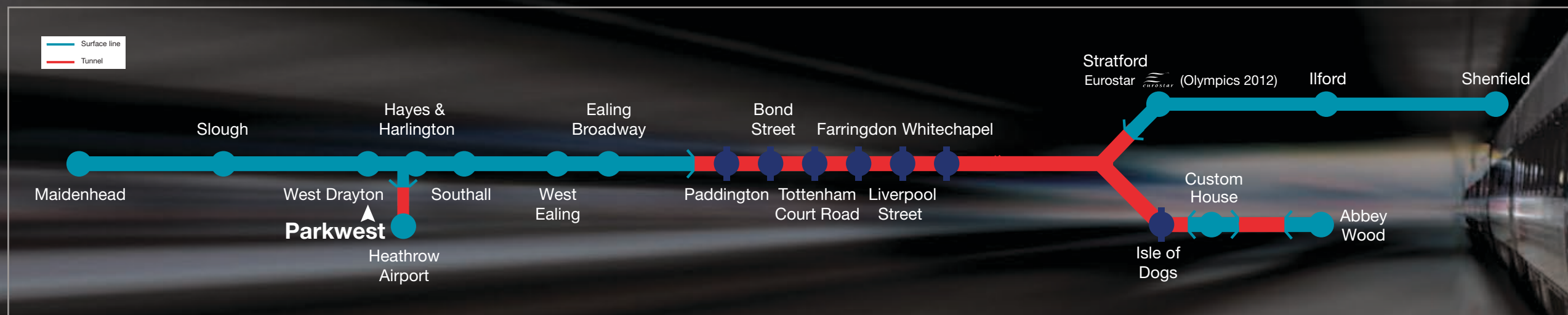
operate with main line size trains, carrying more than 1500 passengers in each train during peak periods.

Crossrail will deliver substantial economic benefits in London, the South-East and across the UK. The estimated benefit of Crossrail to the UK economy is at least £36 billion (TfL figures, May 2006).

Crossrail will make travelling in the region easier and quicker. It will reduce crowding on London's transport network. It will

Analysts predict that the arrival of Crossrail could see a significant uplift in property prices in areas along the route.

Proposed Crossrail

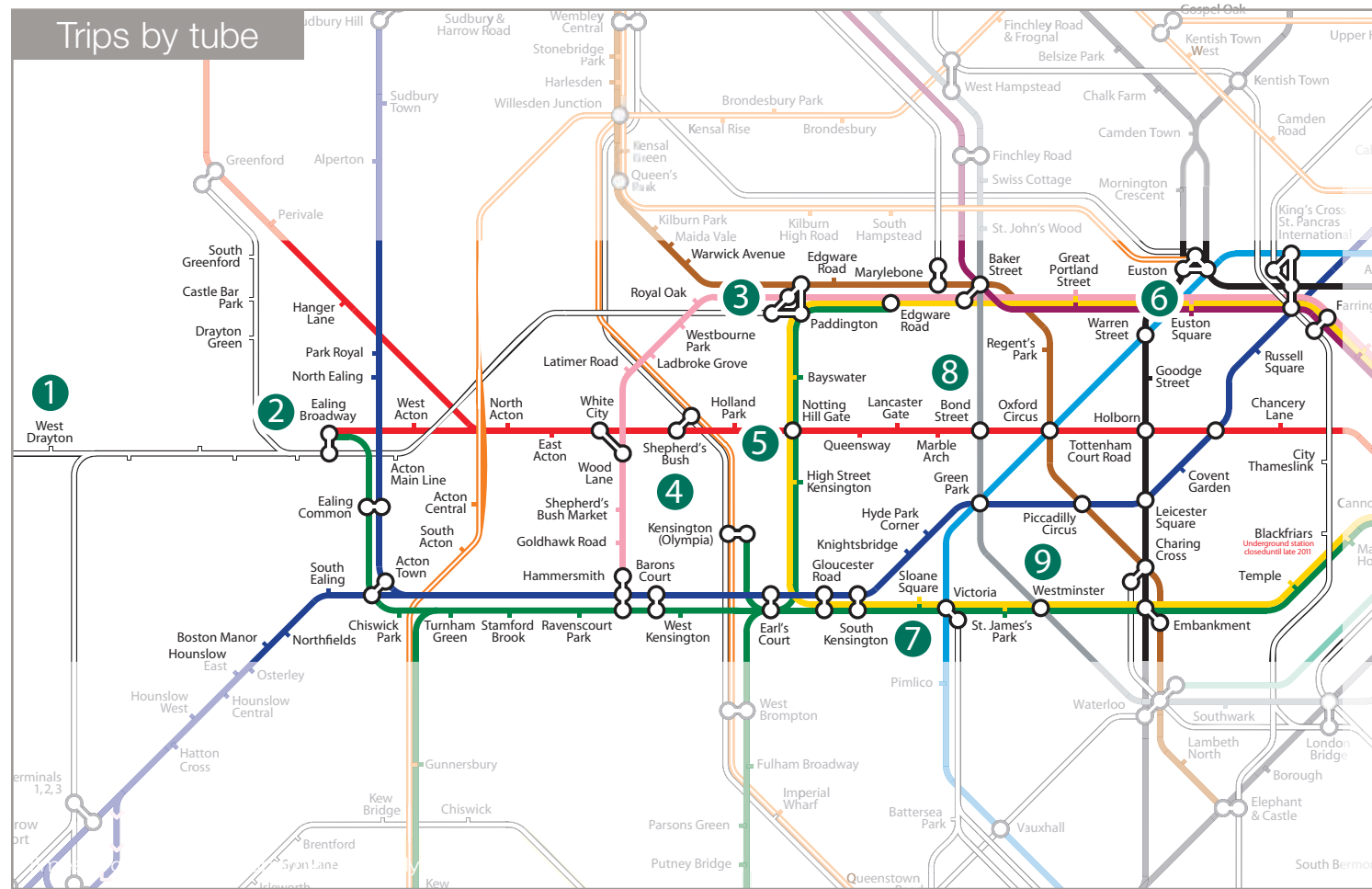


Parkwest: get connected

Wherever you're travelling to, you'll find it easy and convenient. Road, rail and tube all only moments away. See for yourself.

By Road
Whether commuting or travelling around Britain, you're well served by the road network.

M25	3 miles
M4	1 mile
Uxbridge	3 miles
Slough	8 miles
Central London	16 miles



- 1 Parkwest – 10 mins walk to West Drayton station
- 2 Ealing Broadway – 13 mins
- 3 Paddington – 22 mins
- 4 Westfield shopping centre – 27 mins
- 5 Holland Park – 29 mins
- 6 University College London – 32 mins
- 7 Kings Road – 34 mins
- 8 Bond Street – 37 mins
- 9 Houses of Parliament – 39 mins

Times & distances are approximate only



Heathrow International Airport

Put the world on your doorstep. Flying from Heathrow, you can be anywhere in the world in no time.

Paris	1 hour 15 mins
Rome	2 hours 25 mins
New York	8 hours
Sydney	22 hours 30 mins



Parkwest

Mainline rail

With Heathrow only minutes away, you have access to express trains to London Paddington and Central London every 15 minutes, or you can take the local service from West Drayton and be in Central London in 22 minutes.



Take the bus

You also have access to an extensive bus network that will get you to Heathrow, Uxbridge or Slough.

U3	Heathrow
222	Uxbridge
77	Slough

Take the tube

Wherever your destination in London, the tube can get there quickly without the stress of driving or the difficulty of finding a parking space. The Piccadilly line leaves from Heathrow and a little further afield the Metropolitan Line in Uxbridge will speed you into West London.



well placed

Living at Parkwest means you're perfectly situated for London, Britain and overseas.

Designed for living

Today, when it comes to apartment design people are much more sophisticated and demanding. We have responded to these requirements, creating well-designed homes that offer the right combination of luxury & style and space & light: the epitome of the classic contemporary apartment.

As part of the standard specification, custom designed kitchens are all equipped with a choice of door finishes and worktop surfaces†, integrated oven, hob and extractor, and stainless steel sink bowl with chrome mixer taps. All apartments have feature architrave and skirting, as well as flush finished oak veneer doors. Living/dining room areas to one and two bedroom apartments have BT, terrestrial TV and satellite points.

†Subject to stage of construction.





Extraordinary apartments

Walk into any room in a Parkwest apartment and you're struck by a spacious, well-planned environment. It's modern, stylish and welcoming; a great place to spend time.

Everywhere you look there are touches of luxury that raise a Parkwest apartment above the ordinary. The result? A stunning new apartment that's a place to live rather than just a place to stay.



Immerse yourself in **luxury**

At Parkwest all bathrooms and en suites come with Villeroy and Boch chinaware and Hansgrohe chrome brassware as standard. Many apartments benefit from en suite facilities which include a thermostatic shower while one bathroom apartments feature a thermostatic shower over the bath.



Watch the seasons unfold at **Parkwest**

Whatever the time of year, the wonderful landscaped grounds are a truly stimulating environment



Like so many distinguished West London addresses, Parkwest has been designed around neatly landscaped formal squares and private courtyards providing an attractive and relaxing place to be. You have a choice of open communal spaces from managed gardens, to your own private balcony or terrace.





“Parkwest is designed to be a community in itself, a special place that sets it apart. Key to its quality are the two landscaped squares reminiscent of the very best and most sought after of urban residential spaces. Exceptionally carefully planned apartments combined with spacious and well landscaped grounds, will inspire a higher quality of life.”

Peter Crossley, Broadway Malyan Architects

Formal & informal landscaping in which to escape and relax



The landscaping at Parkwest is ideal for spending time with friends or indulging in a little reflection time for yourself. The lawns have been set in areas that attract the sun and the formal squares enjoy features such as a podium deck, to encourage you to interact with your environment.

The variety of plants and shrubs at Parkwest were selected with nature in mind. Under-planting beneath trees and semi-wild areas with grasses provide the ideal setting where parkland can mature and flourish which, in turn, adds to the quality of life.

Parkwest: the bigger picture



Parkwest builds on St George's forward-thinking and award-winning approach to creating beautiful and sustainable living environments.

The landscaped grounds have been designed to create a real community; somewhere you'll want to spend time to meet friends or neighbours - or just unwind and be refreshed by tranquil but stimulating surroundings.

This is a computer generated image for illustrative purposes only. The plan, which includes the affordable housing, reflects outline planning consent at the time of going to press but is subject to change once future phases are designed.



The Runway Gym

The Parkwest gym.
Fully loaded for **absolute** fitness

With today's busy lifestyle it's very easy to forget about exercising. At Parkwest you have your own fully loaded gym only moments from your front door offering state-of-the-art resistance and cardio-vascular equipment.

The private gym is provided for exclusive use of the residents only. But what's important about the Parkwest gym is what you don't have to do. You don't have to travel to get there, so you can take advantage of it whenever you want.

Stockley Park. A business park with a difference - just 5 miles from Parkwest

We all have to work somewhere; for the lucky ones that means Stockley Park. With its superb location, beautiful surroundings, stunning architecture and facilities, it's a million miles from those faceless out of town business parks but only five minutes from Parkwest.

With an environment this attractive, it's no surprise that many of the world's biggest companies, including Marks and Spencer, GlaxoSmithKline and Apple, have made it their home.

Stockley Park enjoys acres of parkland, with lakes and landscaped areas and around 140,000 shrubs and trees, plus a championship-style golf course. It's an attractive and relaxing surrounding to escape the pressure of work.

The restaurants, bar, shops and fitness centre are also amenities that you wouldn't find in your average business park. But then you aren't in the average business park. With Stockley Park so close to Parkwest maybe it's time to start thinking about a career change.



An international flavour

From Tandoori to Gordon Ramsay - and everything in between. At Parkwest, you're never short of great ideas for eating out.



Menus to suit all tastes...

Just some of the restaurants available nearby:

Sipson Tandoori – West Drayton

A true flavour of India. One of the largest Indian restaurants with superb ambience, grand design and beautiful settings

5-9 Harmondsworth Road, West Drayton, UB7 9JJ. Tel: 01895 435515

Go Sing Chinese Restaurant - West Drayton

It's a good sign when a restaurant's always busy, and Go Sing is bustling most nights. This long established restaurant has an enviable reputation. The food is authentic, the service is impeccable and the atmosphere relaxing.

22-24 Station Road, West Drayton, Middlesex, UB7 7BY. Tel: 01895 444174

Simply Nico – West Drayton

Simply Nico restaurant presents simply the best French restaurant dining this side of Paris. With gracefully prepared and elegantly served dishes, it's a favourite with anyone who appreciates inventive, confident modern French cuisine.

Crowne Plaza Hotel, Stockley Road, West Drayton, UB7 9NA. Tel: 0871 4263652

Auberge – Uxbridge

This wonderful place gives you the opportunity to either sample foreign beers, or if you fancy something to eat with a romantic ambience then this is the place for you. The food is amazing, especially the salads. The food and drink is quite expensive but well worth it if the occasion and your bank balance are right!

The Piazza, 223 High Street, Uxbridge, Middlesex, UB8 1LD. Tel: 01895 270111

Pizza Express – Uxbridge

You know exactly what you are going to get when you go to a Pizza Express, which in this case is great as it's reasonably priced and always great quality - especially the pizzas. If it's Italian you want then you can't go too far wrong with this successful chain.

222 High Street, The Chimes Shopping Centre, Uxbridge, UB8 1LD.

Tel: 01895 251222

Charlotte's Place – Ealing

Overlooking lovely Ealing Common, Charlotte's has long offered diners a high-quality French/British dining experience. The airy interior is firmly minimalist, with an open plan kitchen. A great buzz, with live jazz at weekends.

16 St Matthews Road, Ealing, W5 3JT. Tel: 020 8567 7541

Biggles Restaurant - Denham

Biggles is a small family run restaurant, overlooking the Denham Aerodrome. It serves some of the best European cuisine in the area. In the Winter time there is an open fire and in the Summer time, the french doors open to a patio and swimming pool. Booking strongly recommended!

Tilehouse Lane, Denham, Uxbridge, Middlesex, UB9 5DF. Tel: 01895 834241

Gordon Ramsay, Plane Food - Terminal 5

Opened in 2008 Gordon Ramsay's latest restaurant offers an innovative menu for passengers travelling through Heathrow's latest terminal, as well as those looking for fine dining.

Wellington Road, Heathrow Airport, Hounslow TW6 2GA Tel: 020 7592 7964

A place for winners

Formerly the location for RAF West Drayton, best known for its pivotal role in Britain's air defences and air traffic control, Parkwest also holds a unique place in Olympic history.





The last Olympics hosted in London were in 1948. West Drayton was home to the athletes then, as Parkwest has been home to a modern day world record holder.

Parkwest. An Olympic past and future



Usain Bolt - the world's fastest man, used Parkwest as a base in 2009.

Being the fastest man on the planet means Usain Bolt attracts crowds wherever he goes. Whilst preparing for a summer of athletics events all over Europe, Usain and his team mates needed a place to stay that would keep them out of the public eye and allow them to relax in a proper home environment. Added requirements were an on-site gym, 24/7 concierge and easy access to Heathrow Airport so he could compete in Paris, Lausanne, Ostrava and Berlin. Parkwest was the obvious choice.

2012

History repeats itself

Brunel University. Over 40 years of excellence



Isambard Kingdom Brunel: the university's namesake and influence

When gold medal winners James Cracknell and Audley Harrison stood on top of the Olympic podium listening to the national anthem perhaps they paused for a moment to recognise the role of Brunel University in their success. Just three miles from Parkwest, the university has become world renowned for its sporting success. Graduates include stars of track and field as well as champions in a wide range of disciplines from judo to marathon canoeing.

The reason for success can be put down to a combination of teaching excellence – the university has

received a 100% 'excellent' record in teaching quality since 1999 – and outstanding facilities. For example, two years ago the university introduced UEFA-class football facilities and a new international competition-standard athletics track.

Brunel has so much more to be proud of than simply its sporting achievements. As befits a university that took the entrepreneurial and visionary spirit of Isambard Kingdom Brunel as its inspiration, Brunel holds official 'world class' rankings in subjects including engineering, law, IT, maths and sociology.



Parkwest: built for life

Designed from the outset with sustainability in mind, Parkwest gives residents the opportunity to live in stimulating, environmentally-friendly surroundings. The landscaped gardens, manicured lawns, seasonal planting and formal squares serve more than just an aesthetic purpose. They provide an attractive place in which to spend time and socialise - in addition to the residents' gym and community meeting facilities.

These landscaped open spaces at Parkwest also provide long term environmental benefits by enhancing the ecology of the whole area. Great care has been taken to plant native species, shrubs and trees to deliver an ideal habitat for local wildlife.

The environment, though, is just one element of sustainability; it is every bit as much about building lasting communities as well as integrating the development with the communities around it.

An award winning sustainable environment

Recognition of Parkwest's credentials as a sustainable environment has come in the form of numerous awards for St George including winning the Gold in the 2008 International Green Apple Awards for the Built Environment and Architectural Heritage.



Your New Home Awards 2008
Best Development for First Time Buyers

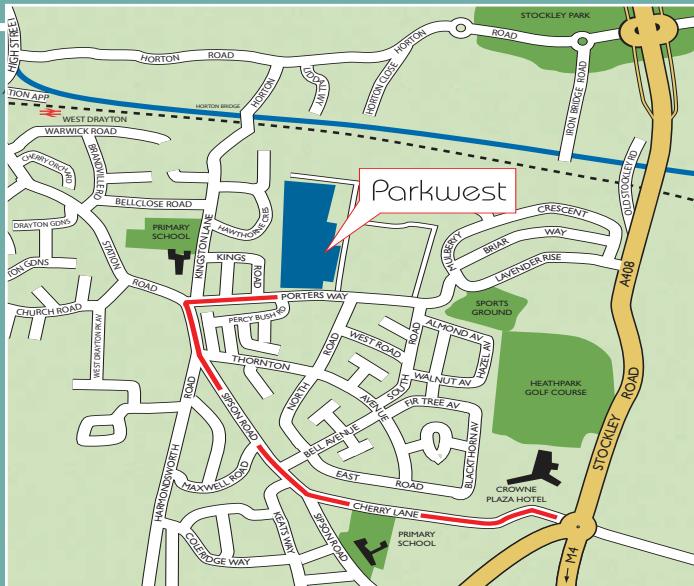
Your New Home Awards 2008
**Landscape of the Year:
Gold Award Winner**

Daily Express New Homes Garden Awards 2008
**Best Urban Landscape:
Gold Award Winner**

Green Apple Awards For New Build Residential 2008
Gold Award Winner

Daily Mail UK Property Awards 2007
**Best Development
Website Award Winner**

NHBC Award 2009
Pride in the Job Quality Award Winner



Recommended route to Parkwest

Parkwest

Sales and Marketing Suite

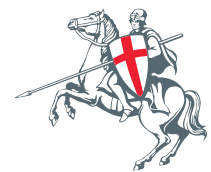
Porters Way

West Drayton UB7 9AU

w: www.park-west.co.uk

t: 01895 449 009

e: parkwest@stgeorgewl.com



ST·GEORGE

www.stgeorgeplc.com

This brochure is produced with 25% post-consumer waste, 25% pre-consumer waste and 50% virgin wood from Brazil and Italy.

The information contained in this brochure is for guidance only. St George operates a policy of continuous product development and features may, therefore, vary from time to time. It should be noted that the representations of Parkwest whilst similar to the development, may not necessarily be accurate in every respect. These particulars should not be relied upon as accurately describing any of the specific matters described by any order under the Property Misdescriptions Act 1991. This information does not constitute a contract or warranty. All details correct as above at time of going to press. Parkwest is a marketing name for use until a permanent postal address has been authorised.