



dreampad ————— where beautiful homes live —————



Hertford, Hertfordshire

Karden Lodge | Church Path | Hertford | Herts | SG13 8ER

Asking Price £1,399,950

Property Particulars

IMPRESSIVE 3270 SQ FT FAMILY RESIDENCE WITH VERY PRIVATE SOUTH FACING 0.38 ACRE PLOT AND ENORMOUS POTENTIAL FOR EXPANSION IN RARELY AVAILABLE HIGHLY SOUGHT AFTER TOWN CENTRE LOCATION. Located only a few minutes walk from Hertford town centre and favoured SG13 schooling, this unique and spacious detached family home occupies a large mature plot of approximately 0.38 acres with extensive parking and a large detached double garage with room above and providing great scope for a self contained annex if required. The property has been greatly improved and refurbished by the present owners. On the ground floor the flexible accommodation comprises an entrance hall, cloakroom, kitchen/breakfast room, utility room, dining room, lounge, study, master bedroom with en suite, a guest bedroom with en suite and a further bedroom. On the first floor there are two further double bedrooms and a large family bathroom. There is access into a large loft area which could be converted into further accommodation if required (stc). Outside the property is approached via a large brick paved driveway offering ample off street parking for several vehicles, leading to a double detached garage with a room over which could easily be used as a annexe facility if required. Gated side access leads to the rear garden which is mostly laid to lawn with mature trees, flower and shrub borders, south facing and patio area, in all extending to 0.38 acres. Offered for sale with no onward chain.

Main Features ▼

- Beautiful 0.38 Acre South Facing Plot
- 5 Bedrooms
- 2 En Suites
- 3270 Sq Ft Of Accommodation
- Double Detached Garage With Room Over/ Annexe
- Extremely Sought After Town Centre Location

Key Information ▼

Local Authority: East Herts Council

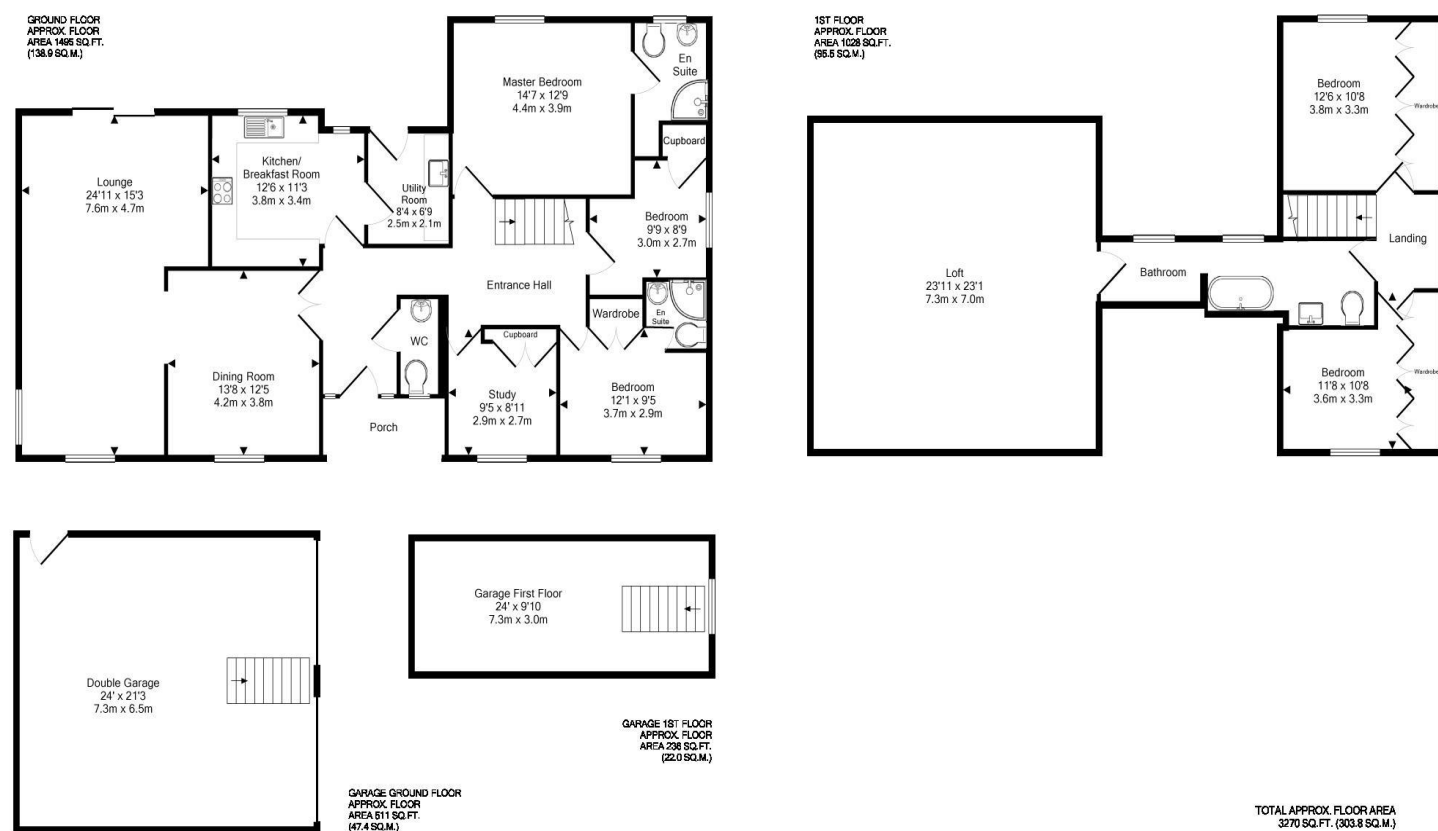
Council Tax Band: G

Services: Mains Gas, Mains Water & Drainage

Road Links: A10 - 1.5 miles, A1(M) (J4) - 7.7 miles

Nearest Station: Hertford East (Liverpool Street) - 0.4 miles

Floorplans ▼



Tel: 01992 661120

info@dreampad.com

www.dreampad.com