

8 High Street Cobham Surrey KT11 3DY
Telephone: 01932 588288
(Lettings: 01932 588299)
Email: cobham@grosvenorb.co.uk




MEADWAY

Audley House, 11 Icklingham Road, Cobham, Surrey, KT11 2NG

Set in the very heart of Cobham's exclusive Fairmile Estate, Audley House is a magnificent new family home offering extensive accommodation and a rare opportunity to construct a bespoke home on one of Cobham's finest roads.

Guide Price £3,995,000



The Property:

The light and luxurious ground floor will offer 3 metre ceiling heights and include five reception rooms, a stunning kitchen/breakfast/family room two utility rooms, separate boot room and sliding folding doors opening onto the landscaped south west backing garden.

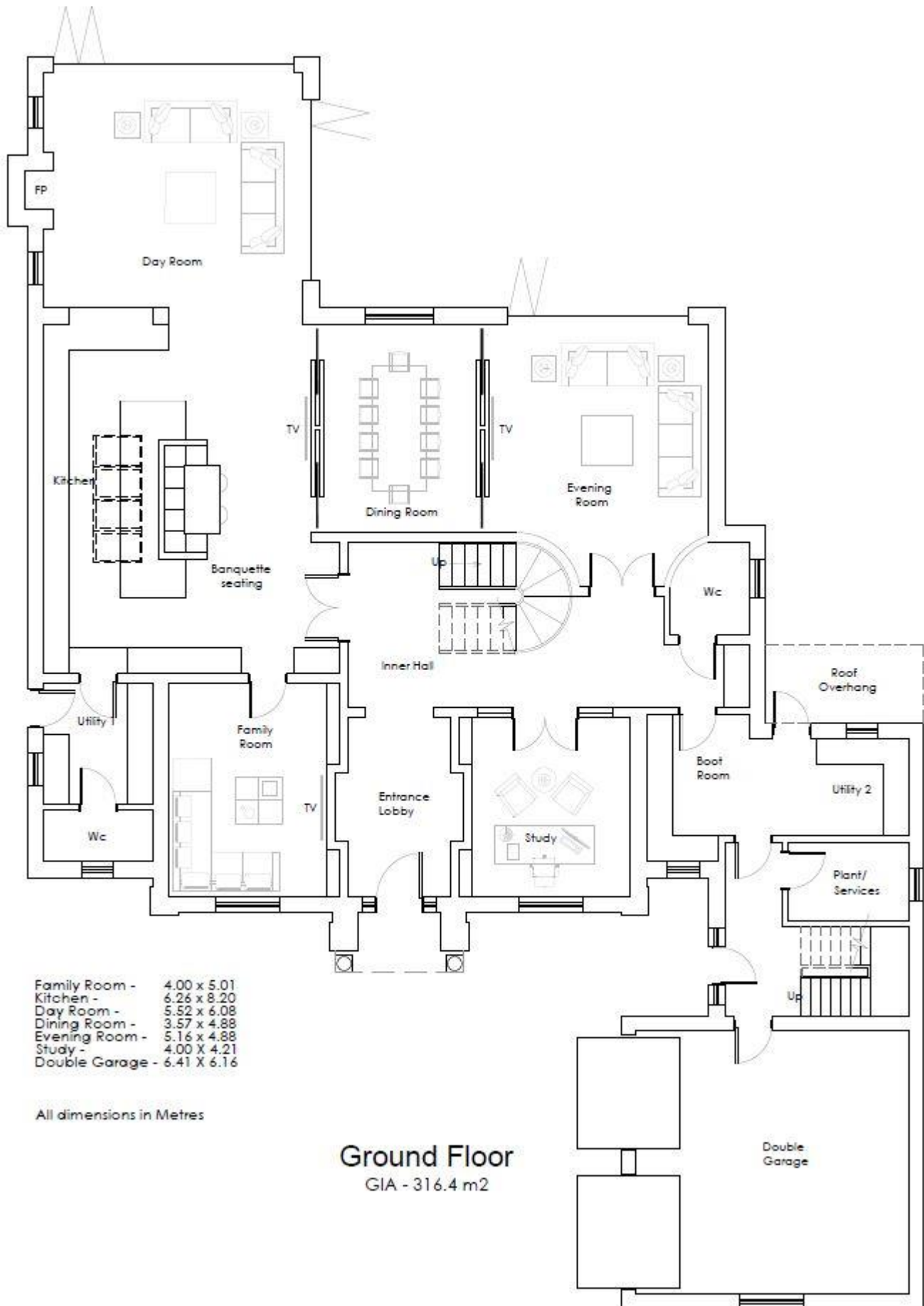
The second floor offers four bedrooms, including a spacious master suite featuring a large dressing room, bathroom and lounge area with views over the garden. To the second floor there are two further bedrooms and a bathroom.

Audley House has staff or additional family accommodation with a separate private entrance located above the double garage, which comprises a mini kitchen, bedroom and bathroom.

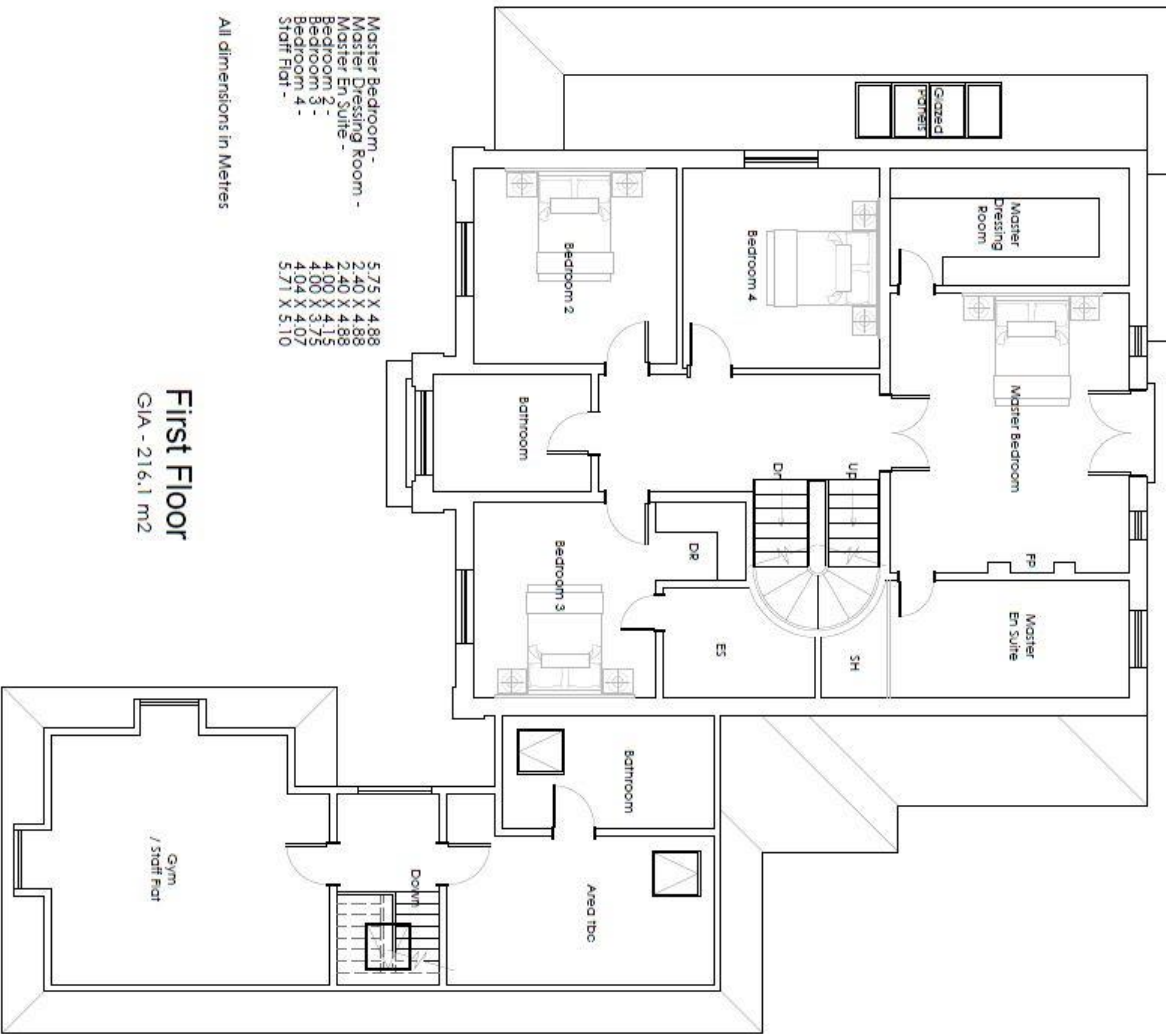
The property sits on a level plot with mature and well screened grounds. Icklingham Road is an enviable address within the Fairmile Estate, a private gated community.

Images are indicative only and from previous Meadway Developments





To arrange a viewing or for any further information please contact Grosvenor Billinghurst on 01932 588288. Services, systems and appliances listed in these particulars have not been tested by Grosvenor Billinghurst and therefore no guarantee as to their operating ability or efficiency can be given.



- Master Bedroom - 5.75 X 4.88
- Master Dressing Room - 2.40 X 4.88
- Master En Suite - 2.40 X 4.88
- Bedroom 2 - 4.00 X 4.75
- Bedroom 3 - 4.00 X 3.07
- Bedroom 4 - 4.71 X 5.10
- Staff Flat -

All dimensions in Metres

First Floor
GIA - 216.1 m²

- Bedroom 5 - 3.83 X 8.58
- Bonus Room - 4.46 X 8.58

All dimensions in Metres

Second Floor
GIA - 97.3 m²

