



Vista Chelsea Bridge Wharf,
London, SW11 8BW
£2,300,000 Leasehold

GARTON JONES.COM



Sophora House, Vista Chelsea Bridge Wharf, London, SW11 8BW

£2,300,000 Leasehold



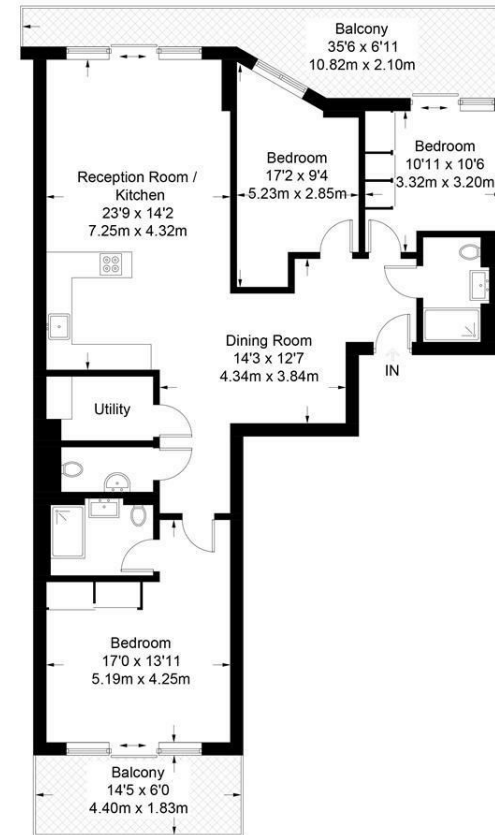
Luxurious three bedroom apartment located on the tenth floor in the Vista Sophora Building at Chelsea Bridge Wharf. Spacious open plan kitchen with beautiful stone work surface finishes and a beautifully designed lounge area. Master bedroom with en-suite bathroom, built in wardrobe and its own Juliette balcony. Further two bedrooms and a separate bathroom in the apartment. Magnificent large windows and a large terrace with views overlooking Battersea Park. Fully equipped residents gym and 24-hour concierge.

An opportunity to acquire an “off plan” apartment due for completion in summer 2017 located in the beautiful, sculptural building called Vista, Chelsea Bridge Wharf. Located between the wide open spaces of Battersea Park and the exciting redevelopment of Battersea Power Station. The breath taking design of the building is matched by the luxury finishes internally and fabulous views. Lease 999 years. Yearly service charge £4.73 per sq/ft approximately.

- 1,175 sq ft (109 sq.m)
- 10th Floor (With Lift) of 15 Floors
- Battersea Park Dual Aspect
- Three Bedrooms, Two Bathrooms
- Open Plan Reception Area
- Balcony
- 24 Hour Concierge
- Residents Gym & Pool

Sophora

Approximate Gross Internal Area = 1175 sq ft / 109.2 sq m



Tenth Floor

Not to scale, for guidance only and must not be relied upon as a statement of fact. All measurements and areas are approximate only and have been prepared in accordance with the current edition of the RICS Code of Measuring Practice.