



Drayton Road, Harlesden NW10

£749,950 Freehold

*** SOLE AGENTS ***

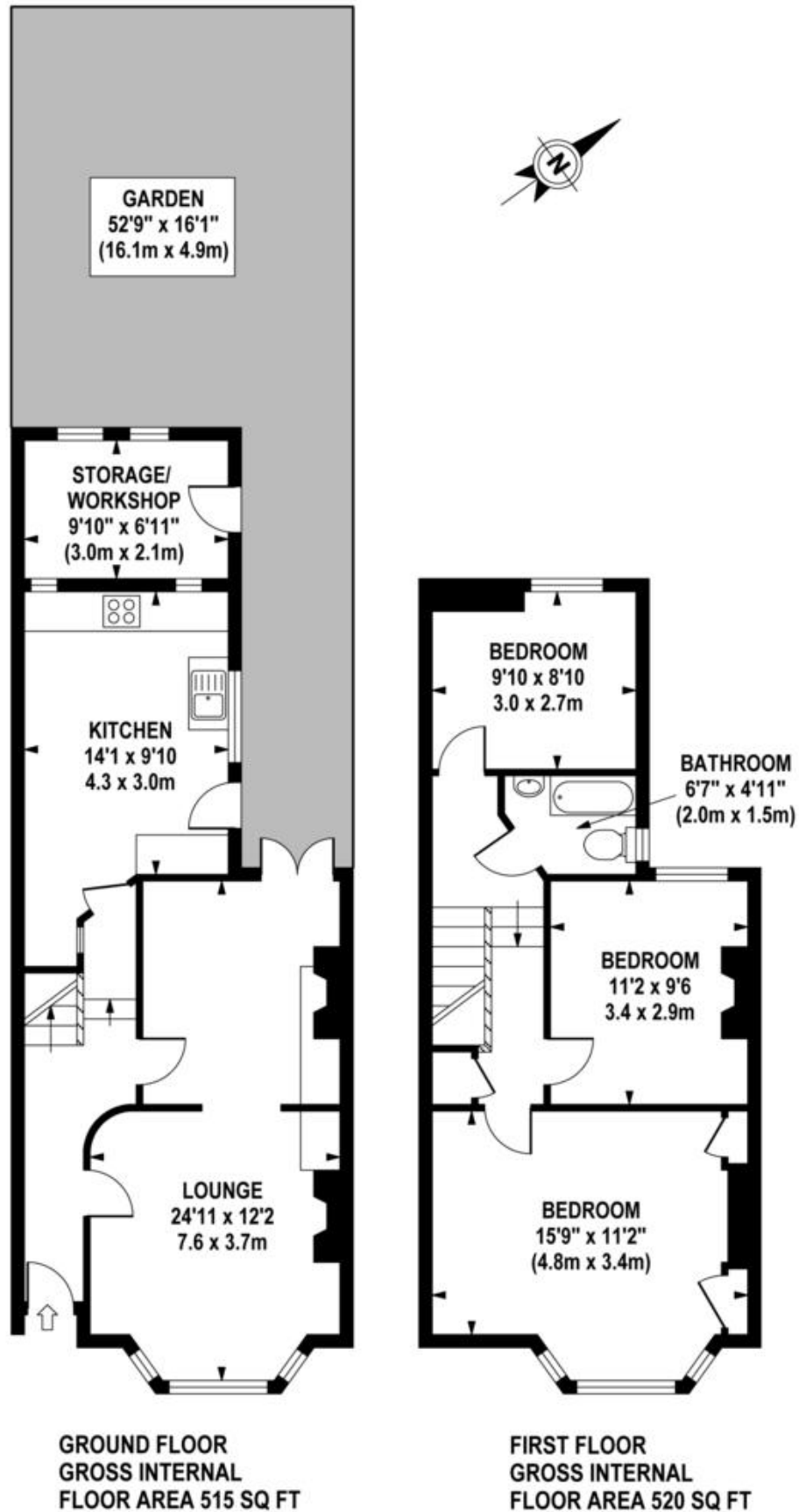
mile... is delighted to introduce on to the market this charming Victorian terraced house. The ground floor consists of a 25ft double reception room, a 14ft fully fitted eat-in kitchen leading onto a great 50ft (approx.) garden whereas the first floor boasts three double bedrooms and a three piece family bathroom. There is also the possibility to extend the side and back of the property but also to make a fantastic double loft with an en-suite shower-room (STPP). The property benefits from original sash windows, high ceilings, many original features and an abundance of natural light and storage space. Drayton Road is ideally positioned close to all the local amenities of Harlesden is within easy reach of a wide selection of shops, bars and restaurants of Willesden Junction. Maple Walk school and Roundwood Park open space are only a few minutes walk from the property. The nearest station is Willesden Junction (Bakerloo line/Overground). Freehold! Chain free!

- Superb Victorian house
- Three double bedrooms
- Amazing 50ft garden
- Good condition
- Chain free
- Many original features
- Possibility to extend two ways
- 25ft double reception room
- Fantastic location
- Close to shops and transports

Drayton Road, NW10 4DH

Approximate Gross Internal Area 1035 sq ft / 96.2 sq m

(Excluding Storage/ Workshop)



Although every attempt has been made to ensure accuracy, all measurements are approximate.
The floor plan's for illustrative purposes only and not to scale. Measured in accordance to RICS standards.

Papoose Property Services

KATPHOTOGRAPHY.ORG

MONEY LAUNDERING REGULATIONS 2003: Intending purchasers will be asked to produce identification documentation at a later stage and we would ask for your co-operation in order that there will be no delay in agreeing the sale.

General: While we endeavour to make our sales particulars fair, accurate and reliable, they are only a general guide to the property and, accordingly, if there is any point which is of particular importance to you, please contact the office and we will be pleased to check the position for you, especially if you are contemplating travelling some distance to view the property.

Measurements: These approximate room sizes are only intended as general guidance. You must verify the dimensions carefully before ordering carpets or any built-in furniture.

Services: Please note we have not tested the services or any of the equipment or appliances in this property, accordingly we strongly advise prospective buyers to commission their own survey or service reports before finalising their offer to purchase.