

Tel No: 01202 706 006
Email: enquiries@tmea.biz
Web: www.tmea.biz

16 Banks Road, Sandbanks
Poole
Dorset
BH13 7QB

Tailor Made
ESTATE AGENTS & LETTINGS



La Plage, 147 Banks Road, Sandbanks, Poole, BH13 7QJ
Price Guide: £6,500,000 Freehold

A stunning brand new beach front house designed by award winning architects Terence O'Rourke to provide the ultimate in luxury living. The accommodation is arranged across four floors, which are serviced by a lift, to include four/five bedrooms, an indoor swimming pool, state of the art bespoke kitchen and luxurious bathroom suites. This superb home offers magnificent views across Poole Bay from all principal rooms and balconies with direct beach access from the rear garden.

- Stunning beach front house
- Lift to all floors
- Four/five bedrooms
- Living room & formal dining room
- Bespoke designer kitchen
- Indoor swimming pool
- Panoramic views of Poole Bay
- Private beachside terrace
- Direct beach access
- Triple garage



ACCOMMODATION & SPECIFICATION:

- Stunning beach front house
- Accommodation over four floors
- Lift servicing all floors
- Superb panoramic views encompassing Poole Bay, Old Harry Rocks & The Purbecks
- Entrance lobby
- Indoor heated swimming pool with changing area
- Utility/store
- Luxury bespoke designer kitchen
- Sub Zero appliances
- Living room
- Formal dining room
- Study/bedroom five
- Master bedroom suite with dressing room
- Three further en-suite bedrooms
- Balconies to all principal rooms
- Sophisticated bathroom suites
- Private beach front terrace
- Direct beach access
- Landscaped gardens
- Triple garage
- Exclusive location within easy walking distance to Poole Harbour and local restaurants

About the Area

Sandbanks and the surrounding area...

Poole Harbour, Sandbanks and the surrounding area offers one of the best places to live in the country.

The beautiful beaches are only a short walk away while the open sea offers some of the best sailing and coastline right on your doorstep.

Internationally acknowledged, Sandbanks boasts the largest natural harbour in Europe (the second largest natural harbour in the world) with miles of golden sand and sheltered waters. It is perfect for either learning the latest water sport or simply lazing on the beach in the sun.

A number of championship standard golf courses are also within easy reach and further leisure facilities include private health clubs and a cosmopolitan mix of bars bistros and boutiques in the surrounding area.

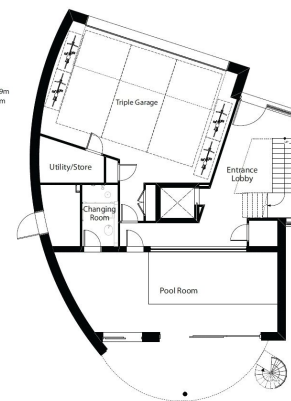
Approximately 2 hours from London by road or train and with national and international links at the nearby Bournemouth International Airport, Sandbanks is the ideal retreat for those looking to escape the pressures of city life.

- Canford Cliffs - 2 miles
- Royal Motor Yacht Club - 0.5 miles
- Poole Station - 5 miles
- Bournemouth International Airport - 12 miles
- London - 112 miles

La Plage

Ground Floor
Entrance lobby
Pool Room
Changing Room
Utility/Store
Triple Garage

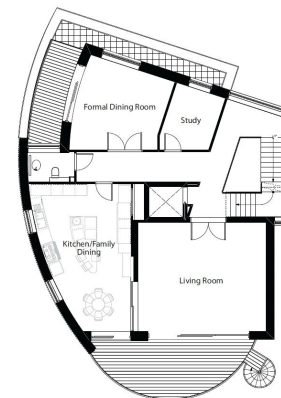
10.90m x 4.09m
3.21m x 1.79m



First Floor

Kitchen/Family Dining
Living Room
Formal Dining Room
Study

9.84m x 5.15m
6.68m x 6.46m
5.16m x 4.53m
5.04m x 2.09m

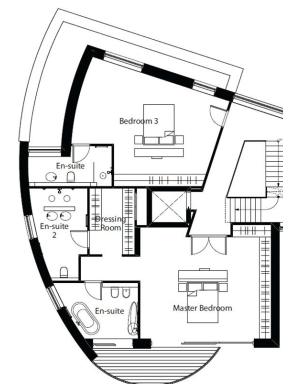


La Plage

Second Floor

Master Bedroom
En-suite
En-suite 2
Dressing Room
Bedroom 3
En-suite

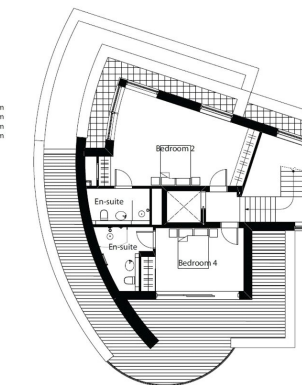
6.82m x 5.50m
2.87m x 2.80m
4.50m x 2.91m
3.28m x 2.26m
7.56m x 4.66m
4.14m x 2.02m



Third Floor

Bedroom 2
En-suite
Bedroom 4
En-suite

4.38m x 3.72m
3.72m x 3.46m
7.08m x 4.68m
2.72m x 1.84m



All room dimensions given above are approximate measurements

These particulars are intended only to give a brief description of the property as a guide to prospective buyers. Accordingly:

• Their accuracy is not guaranteed and neither Tailor Made Estate Agency, nor the vendors accept any liability in respect of their contents.

• They do not constitute an offer of contract for sale.

• Any prospective purchasers should satisfy themselves by inspection or otherwise as to the correctness of any statements or information in these particulars. Please refer to the Agents if you require further clarification or information.

The Property Misdescriptions Act 1991

The Agent has not tested any apparatus, equipment, fixtures and fittings or services and so cannot verify that they are in working order or fit for the purpose. A buyer is advised to obtain verification from their Solicitor or Surveyor.

References to the Tenure of a Property are based on information supplied by the Seller. The Agent has not had sight of the title documents. A Buyer is advised to obtain verification from their Solicitor.

