



# THE CLOISTER

SOUTH AUDLEY STREET, MAYFAIR

£11,000,000 Leasehold



An impressive Mayfair residence of approximately 3,872 square feet elegantly arranged over five floors of this attractive period building with a lift.

## The Cloister

106 Great Portland Street, London, W1W 6PF  
T. +44 (0)20 7436 6210 F. +44 (0)20 7436 7261  
E. [info@thecloister.co.uk](mailto:info@thecloister.co.uk) W. [www.thecloister.co.uk](http://www.thecloister.co.uk)  
Head Office, 64 Knightsbridge, London, SW1X 7JF



# SOUTH AUDLEY STREET, MAYFAIR

£11,000,000 Leasehold

Stunning six bedroom property, elegantly arranged over five floors and boasting ample living space throughout with stunning interiors and a high-quality finish, situated in the heart of Mayfair.

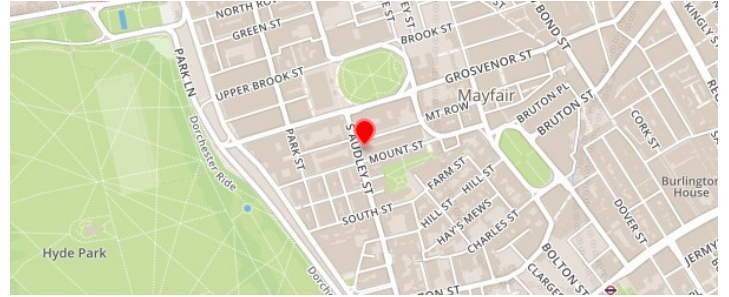
The property comprises a spacious and stunning reception room with a fantastic dining area, well equipped kitchen, master bedroom with dressing room and en-suite bathroom including full-size spa bath, five further bedrooms with en-suite shower rooms, additional shower room and a private lift.

## LOCAL AREA:

South Audley Street is situated amongst some of the capital's most prestigious shops, restaurants and boutiques and is within enviable distance of Regent Street, Oxford Street, Piccadilly and New Bond Street.

## LOCAL TRANSPORT LINKS:

The closest stations are Bond Street (Jubilee, Central) and Marble Arch (Central Line).



---

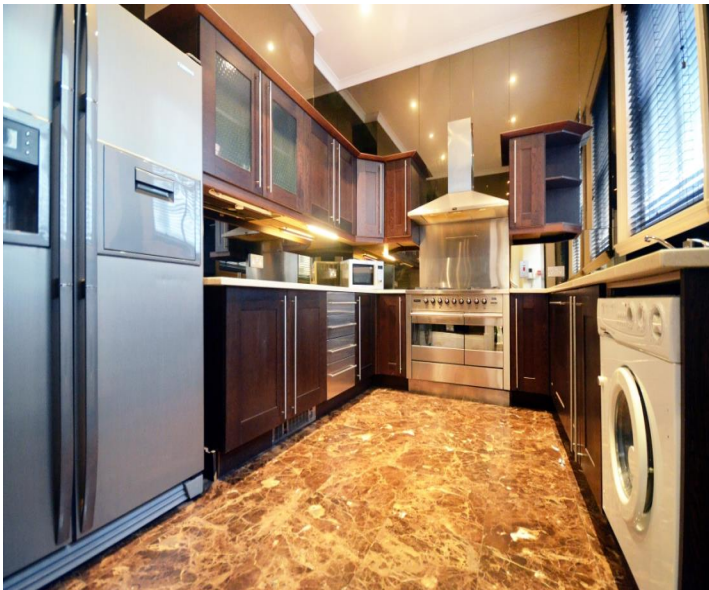
## The Cloister

106 Great Portland Street, London, W1W 6PF  
T. +44 (0)20 7436 6210 F. +44 (0)20 7436 7261  
E. info@thecloister.co.uk W. www.thecloister.co.uk  
Head Office, 64 Knightsbridge, London, SW1X 7JF



# SOUTH AUDLEY STREET, MAYFAIR

£11,000,000 Leasehold



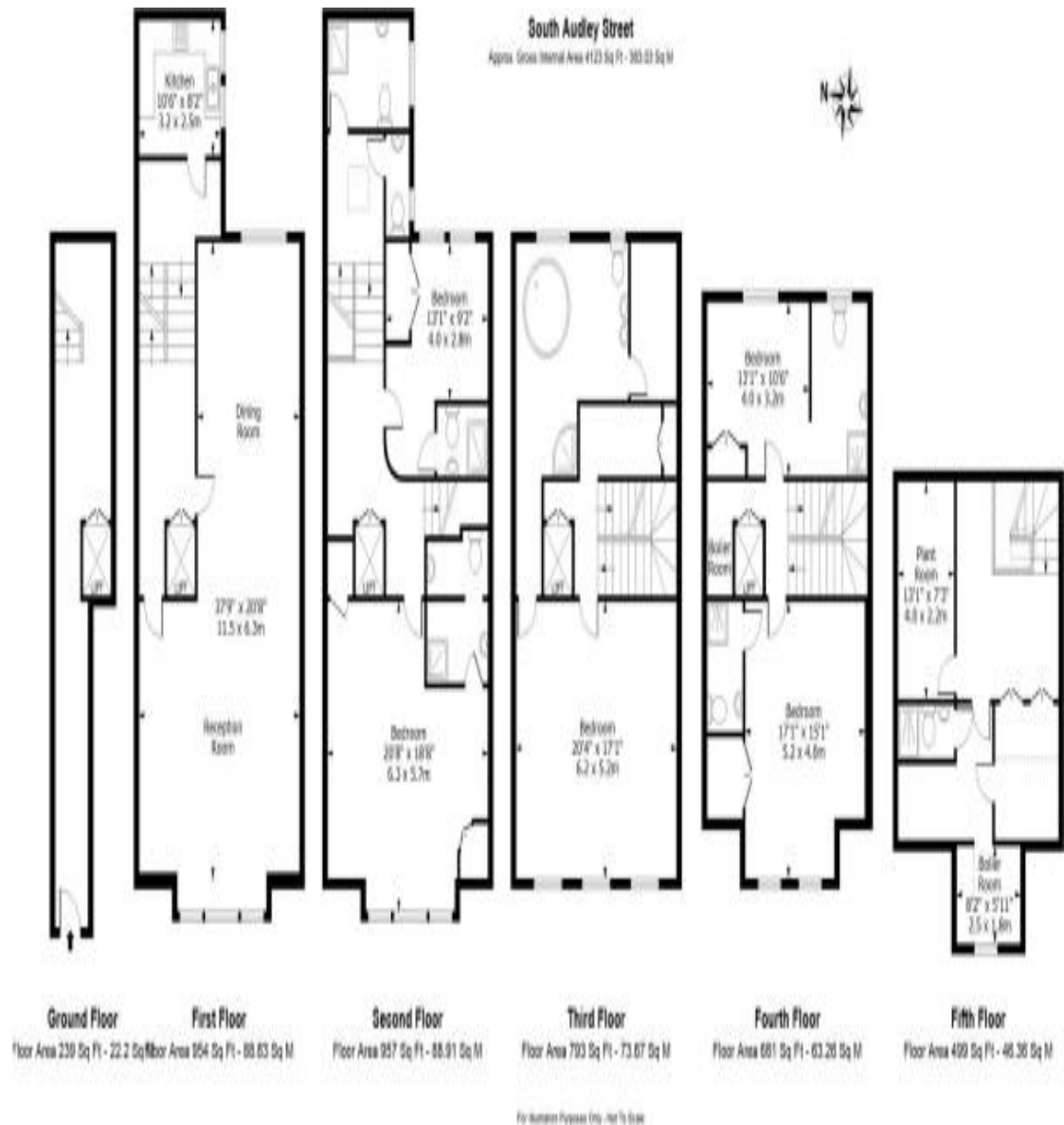
## The Cloister

106 Great Portland Street, London, W1W 6PF  
T. +44 (0)20 7436 6210 F. +44 (0)20 7436 7261  
E. [info@thecloister.co.uk](mailto:info@thecloister.co.uk) W. [www.thecloister.co.uk](http://www.thecloister.co.uk)  
Head Office, 64 Knightsbridge, London, SW1X 7JF



# SOUTH AUDLEY STREET, MAYFAIR

£11,000,000 Leasehold



## Important Notices:

Particulars: These particulars are not an offer or contract, nor part of one. You should not rely on statements by The Cloister in the particulars or by word of mouth or in writing ("information") as being factually accurate about the property, its condition or its value. Neither The Cloister nor any joint agent has any authority to make any representations about the property, and accordingly any information given is entirely without responsibility on the part of the agents, seller(s), lessor(s) or landlord(s). Any areas, measurements or distances are approximate. The text, photographs and plans are for guidance only and are not necessarily comprehensive. Regulations etc: Any reference to alterations to, or use of, any part of the property does not mean that any necessary planning, building regulations or other consent has been obtained. A buyer, lessee or tenant must find out by inspection or in other ways that these matters have been properly dealt with and that all information is correct. All items usually known as tenant's fixtures and fittings whether mentioned or not in these particulars are excluded from the sale or tenancy but certain items may be available by separate negotiation.

Copy Right: The copyright of all details, photographs and floorplans remain exclusive to The Cloister.

## The Cloister

106 Great Portland Street, London, W1W 6PF  
T. +44 (0)20 7436 6210 F. +44 (0)20 7436 7261  
E. info@thecloister.co.uk W. www.thecloister.co.uk  
Head Office, 64 Knightsbridge, London, SW1X 7JF

