



## A BRAND NEW 6 BEDROOM DETACHED HOUSE

Lowswood Close, Northwood, Middlesex HA6 2XE

**ROBSONS**



# A BRAND NEW 6 BEDROOM DETACHED HOUSE

Lowswood Close, Northwood, Middlesex  
HA6 2XE

RECEPTION HALL • THREE RECEPTION ROOMS  
• KITCHEN/BREAKFAST ROOM  
• UTILITY ROOM • CLOAKROOM • MASTER  
BEDROOM WITH ENSUITE DRESSING ROOM &  
BATHROOM • THREE FURTHER BEDROOMS  
WITH ENSUITE FACILITIES • SECOND FLOOR -  
GAMES ROOM • BEDROOMS 5 with ENSUITE  
SHOWER ROOM • SHOWER ROOM • SEPARATE  
ANNEX/STUDIO • LANDSCAPED GARDENS •  
DOUBLE GARAGE • DRIVEWAY WITH OFF  
STREET PARKING FOR SEVERAL VEHICLES

## Description

Positioned in a quiet cul de sac location set within the favoured Copse Wood Estate, this brand new detached executive family home has been skilfully planned and executed to offer circa 6000 sqft of accommodation set over three floors and a separate annex situated in the landscaped rear garden. Built to exacting standards throughout and presented to a modern and light finish incorporating sleek integrated lighting. Internal viewing is recommended to appreciate the detail of this fine new build property.

## Location

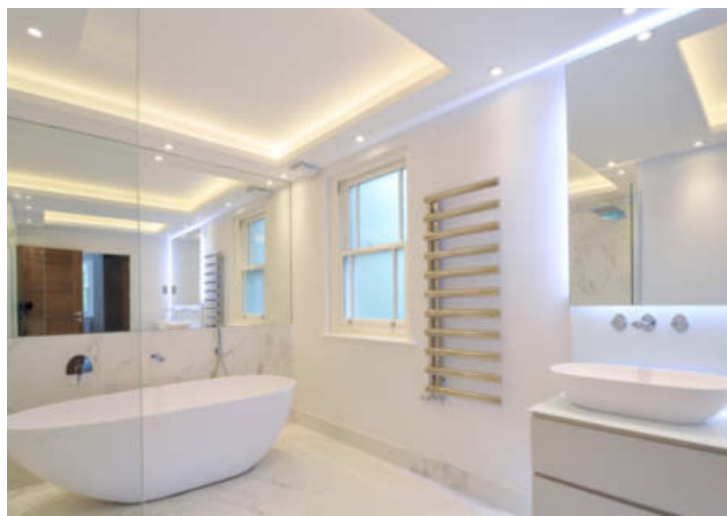
Northwood provides a range of shopping facilities including Waitrose supermarket, a variety of restaurants and other amenities with the Metropolitan Line station providing access to Baker Street and the City. There is a plethora of state and private schooling together with a wide choice of recreational facilities, which include golf courses and fitness centres. The M1, M40 and M25 motorways are also accessible.

## Energy Efficiency Rating Band C

District Council - London Borough of Hillingdon







APPROX. GROSS INTERNAL FLOOR AREA 5278 SQ FT 490.3 SQ METRES (EXCLUDES RESTRICTED HEAD HEIGHT, VOID, OUTBUILDING & INCLUDES GARAGE)



'For illustrative purposes only - not to scale. The position and size of doors, windows, appliances and other features are approximate only.'

Whilst every attempt has been made to ensure the accuracy of the floor plan contained here, measurements of doors, windows and rooms are approximate and no responsibility is taken for any error, omission or misstatement. These plans are for representation purposes only as defined by RICS Code of Measuring Practice and should be used as such by any prospective purchaser. Specifically no guarantee is given on the total square footage of the property if quoted on this plan. Any figure given is for initial guidance only and should not be relied on as a basis of valuation.

**ROBSONS**

53 Green Lane, Northwood, Middlesex HA6 3AE  
Tel: 01923 835355 : mark.howson@robsonsweb.com

[www.robsonsweb.com](http://www.robsonsweb.com)

www.  
the  
londonoffice.co.uk  
40 ST JAMES'S PLACE SW1

Important notice: Robsons, their clients and any joint agents give notice that 1: They are not authorised to make or give any representations or warranties in relation to the property either here or elsewhere, either on their own behalf or on behalf of their client or otherwise. They assume no responsibility for any statement that may be made in these particulars. These particulars do not form part of any offer or contract and must not be relied upon as statements or representations of fact. 2: Any areas, measurements or distances are approximate. Plot sizes and dimensions are taken from Promap and are approximate. The text, photographs and plans are for guidance only and are not necessarily comprehensive. It should not be assumed that the property has all necessary planning, building regulation or other consents and Robsons have not tested any services, equipment or facilities. Purchasers must satisfy themselves by inspection or otherwise.