

CORNWALL CRESCENT

NOTTING HILL W11







CORNWALL CRESCENT

NOTTING HILL W11

This stunning Victorian town house on five floors has an elegant interior and charming private garden. Enviably located close to the centre of Notting Hill and perfectly situated opposite a wide tree lined street, the house enjoys exceptional light to virtually every room setting itself apart from similar properties in the area.

The lower ground floor has been recently refurbished and has proven to be a very successful short term rental, whilst the flexible family accommodation occupies the extensive floors above.

Cornwall Crescent is conveniently situated between Ladbrooke Grove and Clarendon Road. Ladbrooke Grove is the nearest tube station and Portobello Road is a short walk away.



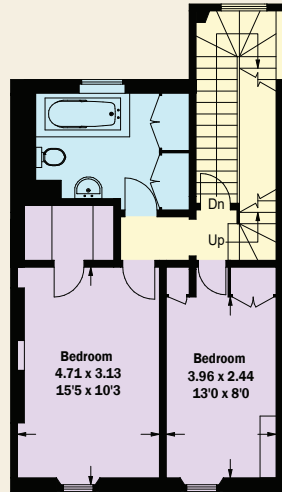
CORNWALL CRESCENT

NOTTING HILL W11

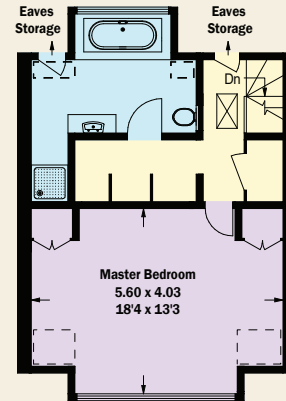
CONSUMER PROTECTION FROM UNFAIR TRADING REGULATIONS 2008. THIS BROCHURE AND THE DESCRIPTIONS AND MEASUREMENTS HEREIN DO NOT CONSTITUTE REPRESENTATION AND WHILST EVERY EFFORT HAS BEEN MADE TO ENSURE ACCURACY, THIS CANNOT BE GUARANTEED.

TENURE: FREEHOLD
GROSS INTERNAL AREA: 275 SQ M/2,960 SQ FT APPROX.
LOCAL AUTHORITY: ROYAL BOROUGH OF KENSINGTON & CHELSEA
ENERGY RATING: D

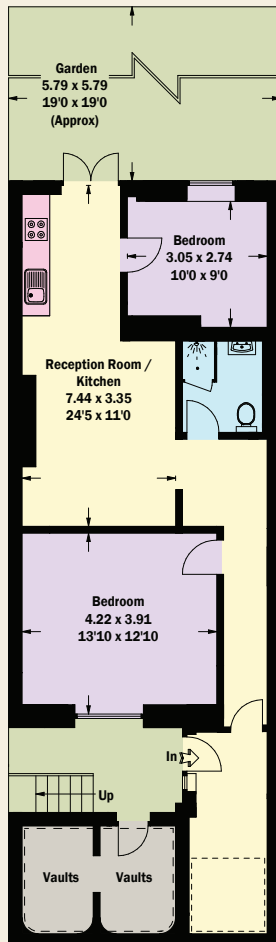
5 BEDROOMS, 3 BATHROOMS, RECEPTION ROOM, KITCHEN, OPEN PLAN RECEPTION ROOM/KITCHEN, DINING ROOM, STUDY, 2 TERRACES, PATIO GARDEN.



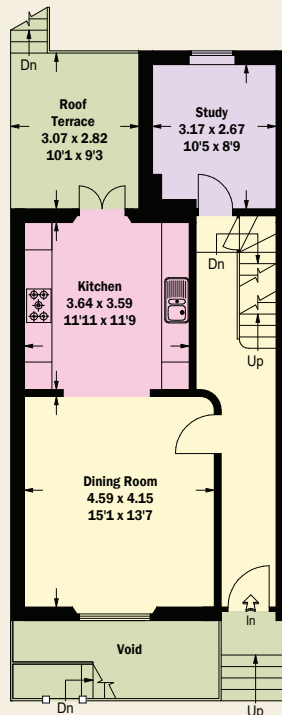
SECOND FLOOR



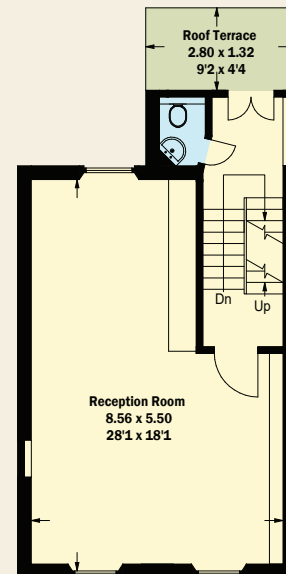
THIRD FLOOR



LOWER GROUND FLOOR



GROUND FLOOR



FIRST FLOOR

LADBROKE GROVE
T 020 7221 0330

126 LADBROKE GROVE LONDON W10 5NE
E LADBROKEGROVE@BECTIVE.CO.UK

WWW.BECTIVE.CO.UK

BECTIVE
-LESLIE MARSH-