



# HIGHLEVER ROAD

NORTH KENSINGTON W10





# HIGLIVER ROAD

NORTH KENSINGTON W10

An exceptional Victorian terrace house that has been beautifully designed and built to create an incredible family home. The property has undergone a comprehensive refurbishment to exacting standards and has one of the finest and most extensive basement conversions to be found in North Kensington. Arranged over just 5 floors it offers flexible and beautiful accommodation on the upper floors, whilst retaining vast and elegant entertaining spaces on the lower floors.

The attention to detail lavished on the property is evident throughout from the stunning bespoke kitchen to the grand yet inviting master suite, this is the most enviable property and unlike anything available at this time. Highlever Road is a pretty tree lined road in North Kensington within walking distance of the excellent shops, restaurants and bars on Golborne Road and Portobello Road. The underground stations at Ladbroke Grove and Latimer Road are almost all equidistant and the area also benefits from Kensington & Chelsea residents parking.







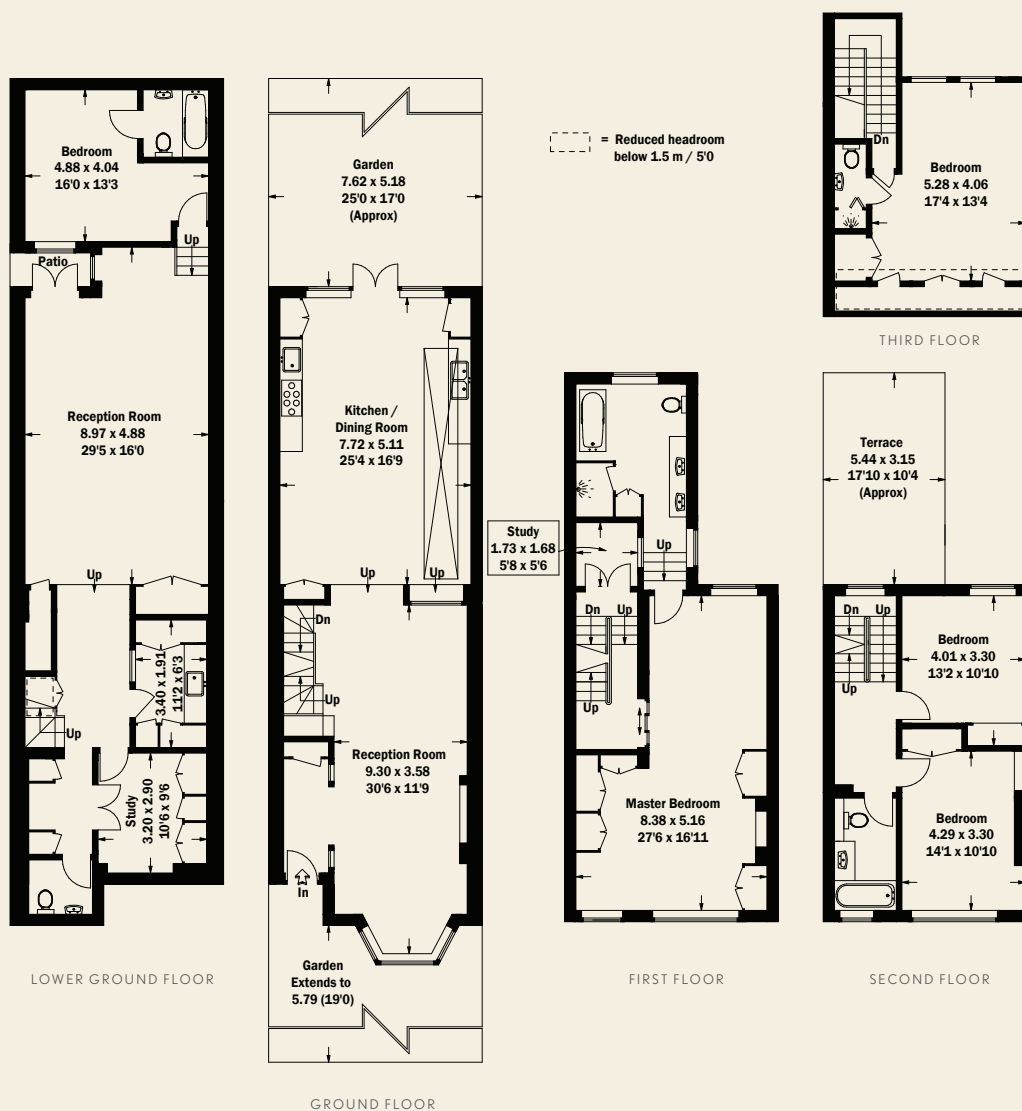
# HIGHLEVER ROAD

**NORTH KENSINGTON W10**

CONSUMER PROTECTION FROM UNFAIR TRADING REGULATIONS 2008. THIS BROCHURE AND THE DESCRIPTIONS AND MEASUREMENTS HEREIN DO NOT CONSTITUTE REPRESENTATION AND WHILST EVERY EFFORT HAS BEEN MADE TO ENSURE ACCURACY, THIS CANNOT BE GUARANTEED.

5 BEDROOMS, EN SUITE SHOWER ROOM, 3 BATHROOMS (2 EN SUITE), 2 RECEPTION ROOMS, KITCHEN/DINING ROOM, 2 STUDIES, TERRACE, GARDEN.

**TENURE:** FREEHOLD  
**GROSS INTERNAL AREA:** 321 SQ M / 3,455 SQ FT APPROX  
**LOCAL AUTHORITY:** THE ROYAL BOROUGH OF KENSINGTON & CHELSEA  
**ENERGY RATING:** C



**LADBROKE GROVE**

T 020 7221 0330

126 LADBROKE GROVE, LONDON W10 5NE

E LADBROKEGROVE@BECTIVE.CO.UK

WWW.BECTIVE.CO.UK

