



BLENHEIM CRESCENT

NOTTING HILL W11





BLENHEIM CRESCENT

NOTTING HILL W11

A classic five storey Victorian house benefitting from a private rear garden and off-street parking. The house is well laid out and benefits from lovely natural light, generous ceiling heights and period features throughout.

Having recently undergone a comprehensive refurbishment, the raised ground floor has been opened up to provide a breath-taking kitchen and dining room with bespoke units and marble worktops. The first floor and lower ground floor both have generous reception

rooms, whilst the second floor is given over to a sumptuous master bedroom suite. The remaining bedrooms offer flexibility on both the top floor and lower ground floor.

Blenheim Crescent is a tree lined street off Ladbrooke Grove, close to Portobello, Westbourne Grove and Notting Hill. Local shops, excellent transport links and underground station are close to hand.



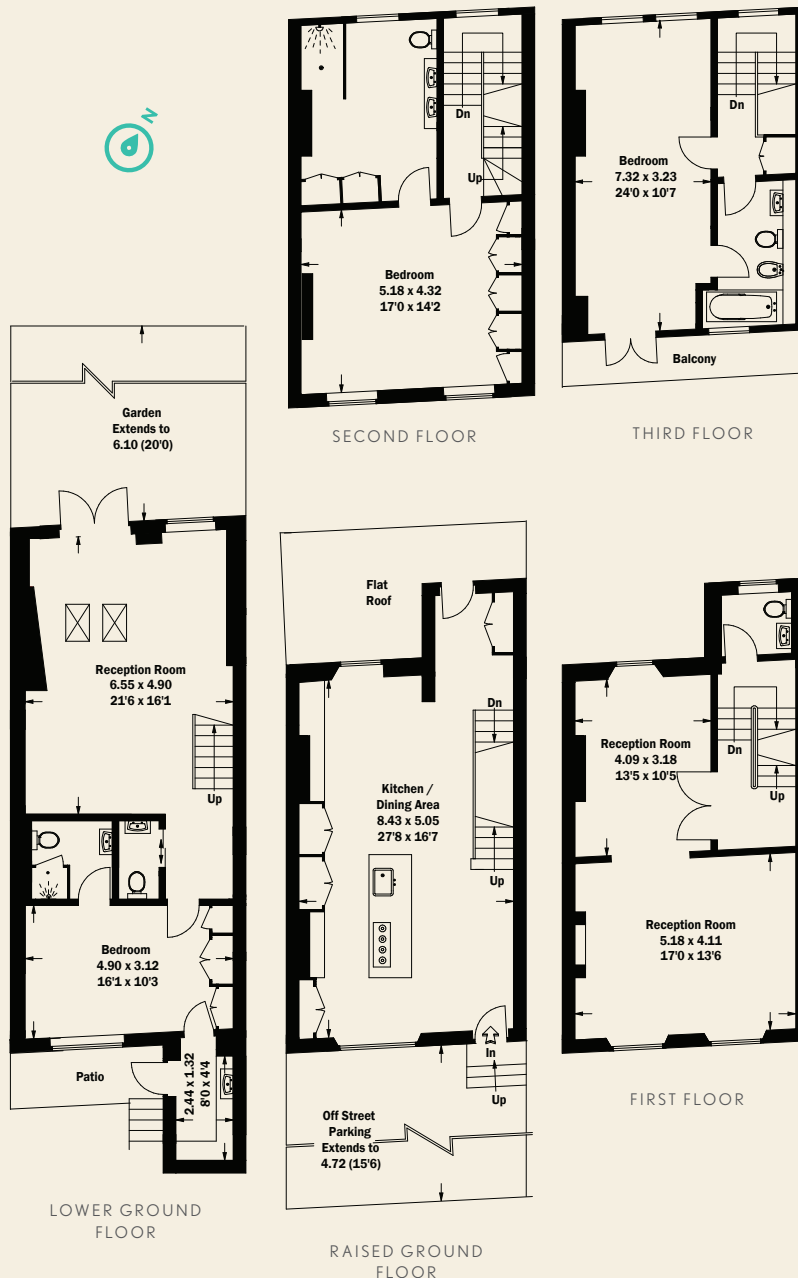
BLENHEIM CRESCENT

NOTTING HILL W11

CONSUMER PROTECTION FROM UNFAIR TRADING REGULATIONS 2008. THIS BROCHURE AND THE DESCRIPTIONS AND MEASUREMENTS HEREIN DO NOT CONSTITUTE REPRESENTATION AND WHILST EVERY EFFORT HAS BEEN MADE TO ENSURE ACCURACY, THIS CANNOT BE GUARANTEED.

PRICE: £4,150,000
TENURE: FREEHOLD
GROSS INTERNAL AREA: 241 SQ M/2,600 SQ FT APPROX.
LOCAL AUTHORITY: ROYAL BOROUGH OF KENSINGTON & CHELSEA
ENERGY RATING: E

3 BEDROOMS, 2 EN SUITE BATHROOMS, EN SUITE SHOWER ROOM, 2 CLOAKROOMS, 3 RECEPTION ROOMS, KITCHEN/DINING AREA, UTILITY ROOM, BALCONY, FLAT ROOF, PATIO, GARDEN, OFF STREET PARKING.



LADBROKE GROVE
T 020 7221 0330
126 LABBROKE GROVE LONDON W10 5NE
E LABBROKEGROVE@BECTIVE.CO.UK

WWW.BECTIVE.CO.UK

STRUTT & PARKER
020 7221 1111
303 Westbourne Grove
London W11 2QA
struttandparker.com

BECTIVE
-LESLIE MARSH-