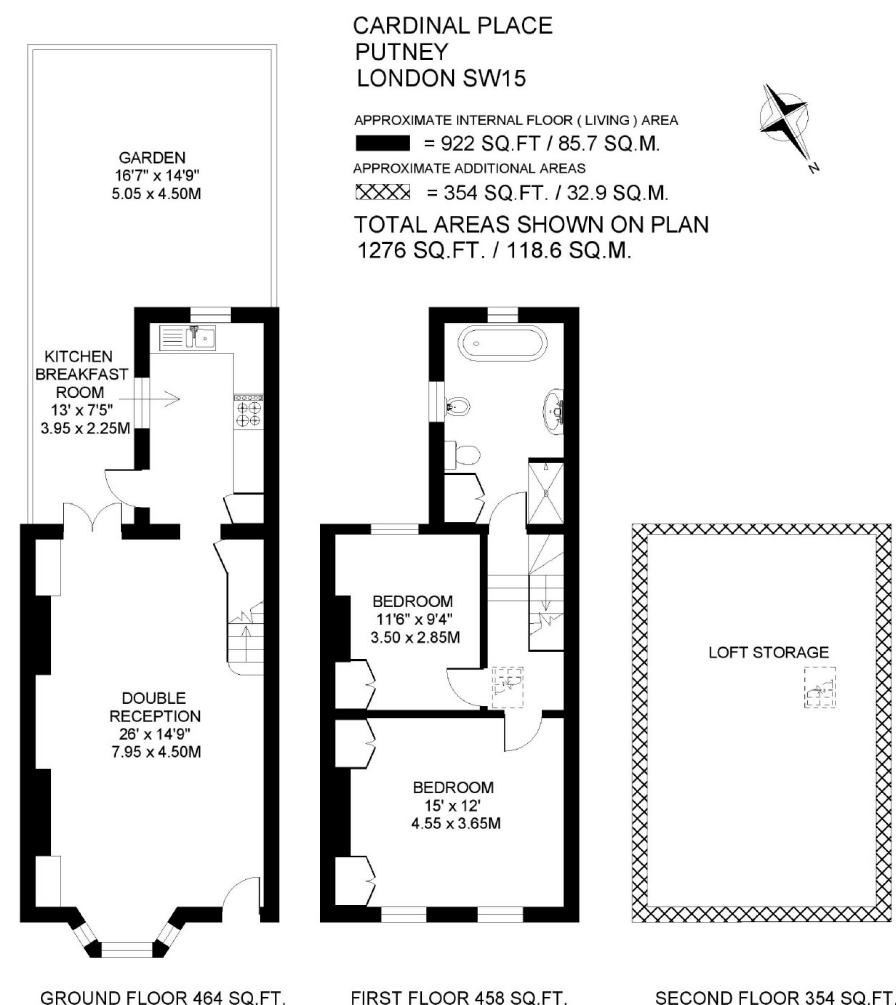


Cardinal Place, Putney, SW15

A charming two double bedroom, Victorian freehold cottage, located on one of Putney's prettiest streets, conveniently situated close to the High Street in a highly sought after and historic enclave of Lower West Putney. The property boasts a spacious double reception room, which opens out to a south facing walled garden. Offering over 900 SQ FT of accommodation the cottage is well presented and the vendors have planning permission to extend into the side return and loft (planning application number 2017/0087). Cardinal Place is just off of Lacy Road and set within an idyllic and exceptionally quiet location within easy walking distance to Putney's comprehensive transport links, the many amenities of the High Street and is within the catchment area of a number of highly regarded local schools. The property is available with no onward chain.



COPYRIGHT
FLOORPLAN PRODUCED FOR WARREN PUTNEY
BY FLOORPLANNERS 07801 228850

- FREEHOLD VICTORIAN COTTAGE
- 922 SQ FT
- TWO BEDROOMS
- FAMILY BATHROOM
- SOUTH FACING REAR PATIO GARDEN
- FRONT GARDEN
- DOUBLE RECEPTION ROOM
- KITCHEN

- PLANNING PERMISSION TO EXTEND INTO THE SIDE RETURN AND LOFT
- CATCHMENT AREA FOR A NUMBER OF HIGHLY REGARDED SCHOOLS
- CHARMING CENTRAL PUTNEY LOCATION
- CLOSE TO TRANSPORT LINKS AND THE AMENITIES OF PUTNEY HIGH STREET
- CUL-DE-SAC
- LOFT STORAGE
- EPC RATING D
- CHAIN FREE

GUIDE PRICE

£935,000

Freehold
Sole Agency



DISCLAIMER•These particulars are intended to give a fair and substantially correct overall description for the guidance of intending purchasers and do not constitute an offer or part of a contract. Prospective purchasers and/or lessees ought to seek their own professional advice.
 •All descriptions, dimensions, areas, references to condition and necessary permissions for use and occupation and other details are given in good faith and are believed to be correct, but any intending purchasers should not rely on them as statements or representations of fact, but must satisfy themselves by inspection or otherwise as to the correctness of each of them.
 •All measurements are approximate.

