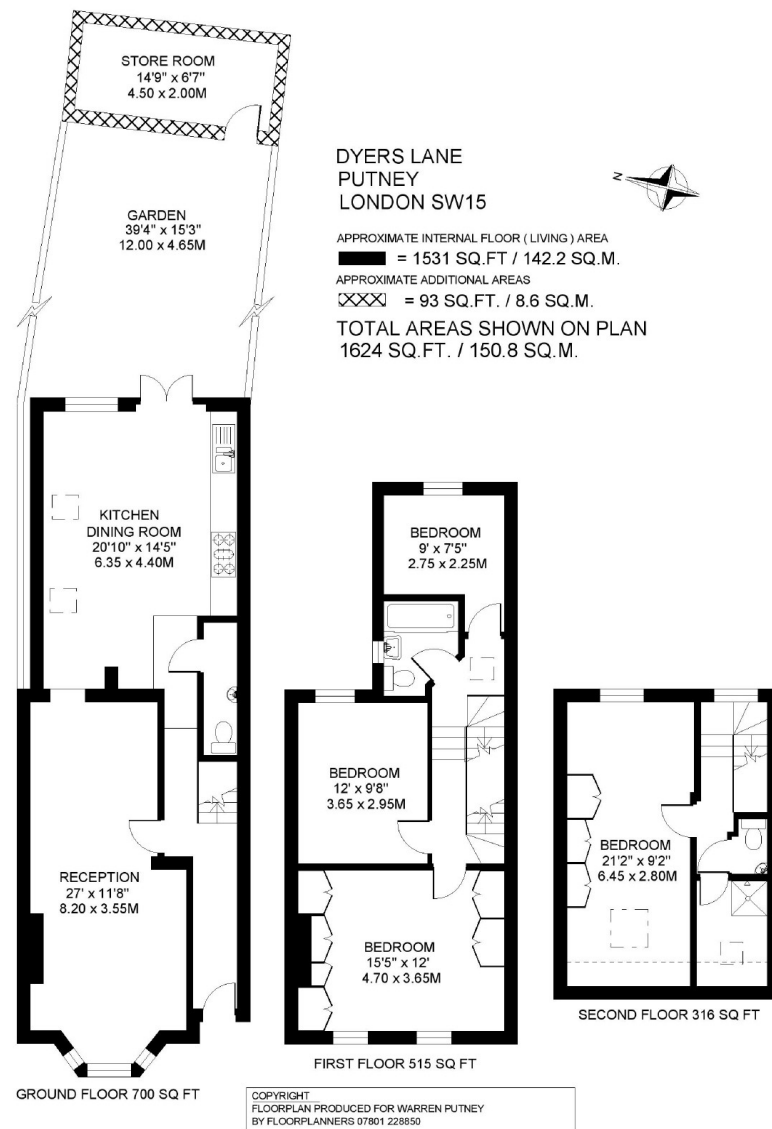


Dyers Lane, Putney, SW15

A delightful four bedroom end of terrace Victorian family home with a 40' private rear garden. The property was extended by the current owner to meet the family needs and now offers over 1,500 SQ FT of living accommodation. Of particular note is the large double reception room as well as a very bright full width and extended kitchen/breakfast room. Dyers Lane is located just off the Upper Richmond Road within walking distance from green open spaces of Putney Common, of transport links into Central London, local shops and the many and varied amenities of the Upper Richmond Road and Putney High Street.



- END OF TERRACE
- FREEHOLD
- DOUBLE RECEPTION
- OPEN PLAN KITCHEN DINING ROOM
- CIRCA 40' PRIVATE RARE GARDEN
- LARGE GARDEN STORE ROOM
- MASTER BEDROOM
- FAMILY BATHROOM
- THREE FURTHER BEDROOMS
- EN-SUITE

GUIDE PRICE

£1,200,000

Freehold
Sole Agency



DISCLAIMER•These particulars are intended to give a fair and substantially correct overall description for the guidance of intending purchasers and do not constitute an offer or part of a contract. Prospective purchasers and/or lessees ought to seek their own professional advice.

- All descriptions, dimensions, areas, references to condition and necessary permissions for use and occupation and other details are given in good faith and are believed to be correct, but any intending purchasers should not rely on them as statements or representations of fact, but must satisfy themselves by inspection or otherwise as to the correctness of each of them.
- All measurements are approximate.

