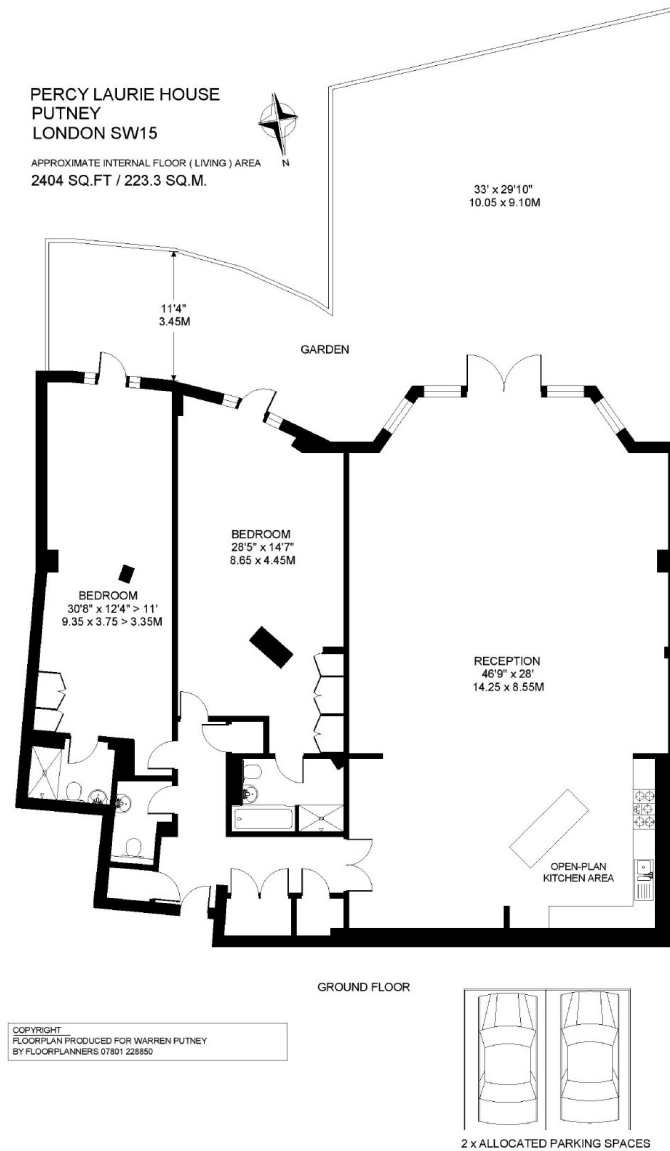


Percy Laurie House, 215-219 Upper Richmond Road, Putney, SW15

An exceptionally spacious and contemporary two bedroom apartment located on the ground floor of this iconic development in Central Putney. Offering over 2,400 square feet of accommodation, the expansive open kitchen/dining/reception room enjoys direct access onto a large south facing private garden - as do the two bedrooms both of which enjoy en-suite facilities. The property also comes with two secure parking spaces. Residents also enjoy a dedicated concierge service. Percy Laurie House is situated within a few hundred yards of Putney High Street with its comprehensive transport links and its many and varied amenities.



- 2,404 SQ FT
- ENTRANCE HALLWAY
- SPACIOUS OPEN PLAN KITCHEN/RECEPTION ROOM
- BEDROOM WITH EN-SUITE SHOWER ROOM
- BEDROOM WITH EN-SUITE BATHROOM
- CLOAKROOM
- LARGE SOUTH FACING GARDEN
- STORAGE
- TWO PARKING SPACES
- CONCIERGE SERVICE
- CONVENIENT LOCATION
- EPC RATING D

Service Charge: £7,774.32 PA Reserve Fund £1,935.00 PA Lease Length: 109 years remaining



DISCLAIMER•These particulars are intended to give a fair and substantially correct overall description for the guidance of intending purchasers and do not constitute an offer or part of a contract. Prospective purchasers and/or lessees ought to seek their own professional advice.
•All descriptions, dimensions, areas, references to condition and necessary permissions for use and occupation and other details are given in good faith and are believed to be correct, but any intending purchasers should not rely on them as statements or representations of fact, but must satisfy themselves by inspection or otherwise as to the correctness of each of them.
•All measurements are approximate.

GUIDE PRICE
£1,295,000

Leasehold
Sole Agency

