

# DeVessey Village

Willoughby Road, Greylees, Sleaford, Lincolnshire NG34 8GT

A development of stylish 2, 3, 4, 5 and 6 bedroom homes situated in a rural village community.



[www.dwh.co.uk](http://www.dwh.co.uk)



DAVID WILSON HOMES

WHERE QUALITY LIVES

# DeVessey Village

Willoughby Road, Greylees, Sleaford, Lincolnshire NG34 8GT

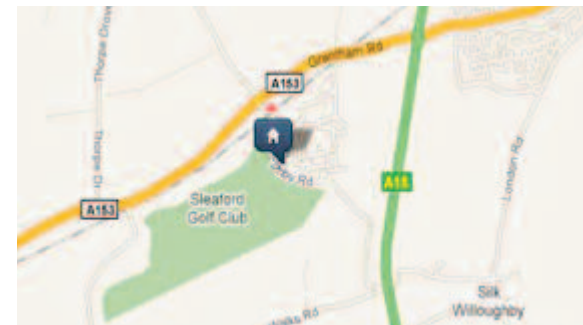
A development of stylish 2, 3, 4, 5 and 6 bedroom homes situated in a rural village community.

This Stunning rural development surrounded by woodland is in a superb location with road and rail links to the nearby towns of Grantham and Sleaford.

A range of great value homes are available, suitable for a range of buyers. A great range of schemes are on offer to help you live here, including Part Exchange and low deposit.

For a growing town that is home to some unique historic buildings, Sleaford promotes traditional village values whilst encouraging a thriving community. All around the town are plenty of opportunities to enjoy the area's plentiful heritage.

For those who enjoy the arts and music, Sleaford is the ideal home. In recent years, the area has seen an influx of visitors seeking local crafts and music in a historic, rural setting. The town's residents are kept busy with annual events such as Sleaford Live, a festival of music, theatre, photography and art that is always in need of willing volunteers.



[www.dwh.co.uk](http://www.dwh.co.uk)



DAVID WILSON HOMES

WHERE QUALITY LIVES

# DeVessey Village

Montrose Grove, Rauceby,  
Lincolnshire, NG34 8GT  
Site Plan

- Winton 2 bedroom home
- Hadley 3 bedroom home
- Bradwell 3 bedroom home
- Irving 4 bedroom home
- Drummond 4 bedroom home
- Millford 4 bedroom home
- Bradbury 4 bedroom home
- Winstone 4 bedroom home
- Cornell 4 bedroom home
- Layton 4 bedroom home
- Shelbourne 4 bedroom home
- Holden 4 bedroom home
- Emerson 5 bedroom home
- Balshaw 5 bedroom home
- Lichfield 5 bedroom home
- Moorecroft 5 bedroom home
- Kemble 5 bedroom home
- Glidewell 5 bedroom home
- Earlswood 5 bedroom home
- SO Affordable Housing Shared Ownership
- SH Show Home
- SC Sales Centre



The company reserves the right to make amendments to the development layout and materials at any time. This leaflet is for guidance only and is not intended to form any part of any contract. For landscaping information please refer to detailed drawings. H1556/51 Rev N

dwh.co.uk



**DAVID WILSON HOMES**  
WHERE QUALITY LIVES



# The Winton

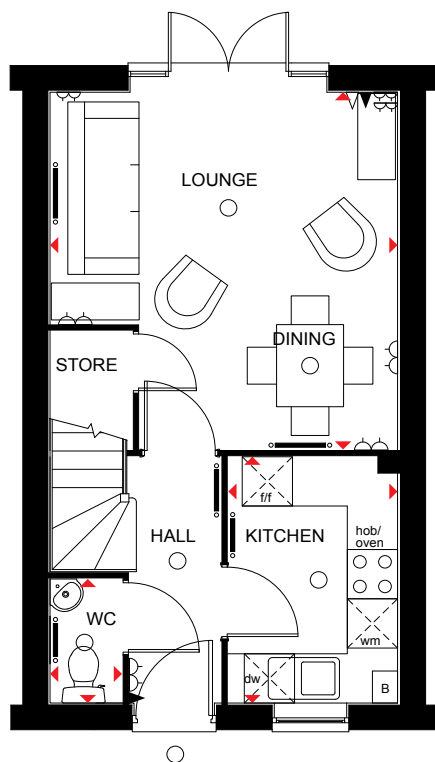
Two bedroom inner and outer town homes and semi detached homes

## Ground Floor

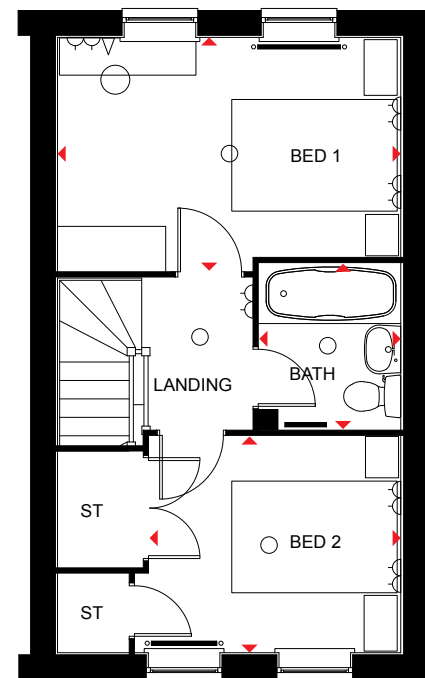
Lounge/Dining	4351 x 4150 mm	14'3" x 13'7"
Kitchen	3000 x 2021 mm	9'10" x 6'8"
WC	1511 x 860 mm	4'11" x 2'10"

## First Floor

Bed 1	4150 x 2821 mm	13'7" x 9'3"
Bed 2	2615 x 3037 mm	8'7" x 10'0"
Bath	2000 x 1710 mm	6'7" x 5'7"



Ground Floor



First Floor

## KEY

○ Light fitting	◀ Telephone outlet point	— Radiator	B Boiler	f/f Fridge/freezer space	dw Dishwasher space	◄► Dimension location
⏏ Electric socket	◁ T.V. aerial socket	— Towel radiator	ST Store	wm Washing machine space	td Tumble dryer space	

Computer generated images are for illustrative purposes only and individual features often vary from one plot to another. Floor plans are indicative only to give a general indication of the proposed development and floor layout. The dimensions are accurate to within + or -50mm. Dimensions should not be used for carpet sizes, appliance spaces or items of furniture. Please ask our Sales Advisers for details of the treatments specified for individual plots. Computer generated images are for general guidance only and are not intended to form part of any contract or warranty. Furniture shown is for illustrative purposes only. Computer generated image and photographs are for general guidance only and are not intended to form part of any contract or warranty.



# The Hadley

Three bedroom detached home

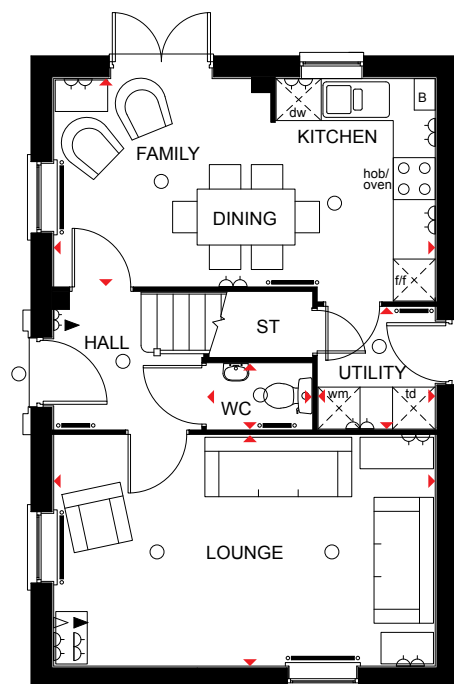
## Ground Floor

Lounge	5455 x 3300 mm
Kitchen/Family/Dining	5455 x 2966 mm
Utility	1497 x 935 mm

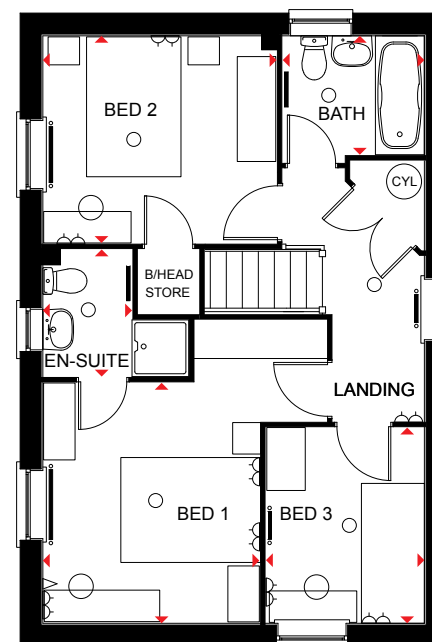
17'11" x 10'10"
17'11" x 9'9"
4'11" x 3'1"

## First Floor

Bed 1	3438 x 3101 mm	11'3" x 10'2"
En-suite	1818 x 1275 mm	6'0" x 4'2"
Bed 2	3341 x 2966 mm	11'3" x 9'9"
Bed 3	2798 x 2265 mm	9'2" x 7'5"
Bath	2025 x 1700 mm	6'8" x 5'7"



Ground Floor



First Floor

## KEY

○ Light fitting	◀ Telephone outlet point	— Radiator	B Boiler	CYL Cylinder	wm Washing machine space	td Tumble dryer space
◡ Electric socket	◁ T.V. aerial socket	— Towel radiator	ST Store	f/f Fridge/freezer space	dw Dishwasher space	◄► Dimension location

Computer generated images are for illustrative purposes only and individual features often vary from one plot to another. Floor plans are indicative only to give a general indication of the proposed development and floor layout. The dimensions are accurate to within + or -50mm. Dimensions should not be used for carpet sizes, appliance spaces or items of furniture. Please ask our Sales Advisers for details of the treatments specified for individual plots. Computer generated images are for general guidance only and are not intended to form part of any contract or warranty. Furniture shown is for illustrative purposes only. Computer generated image and photographs are for general guidance only and are not intended to form part of any contract or warranty.



# The Bradwell

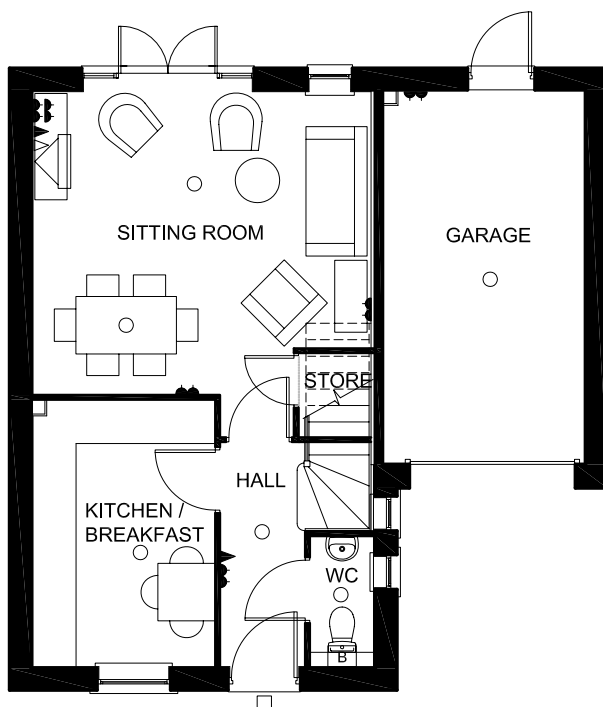
Three bedroom detached home

## Ground Floor

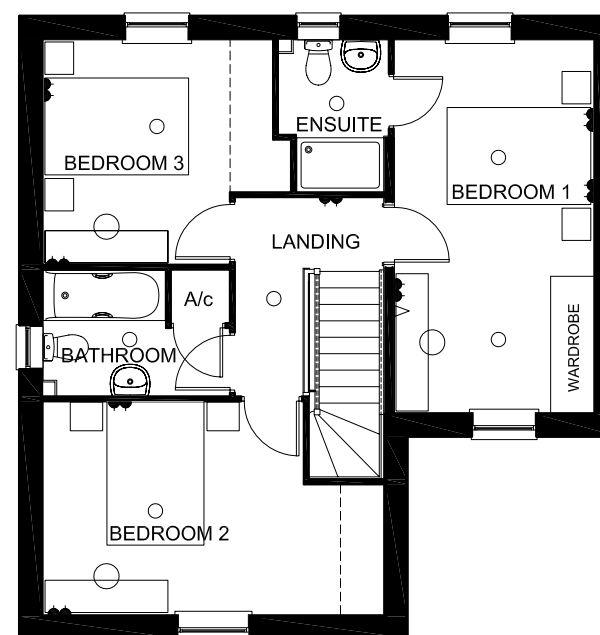
Sitting Room	4705 x 4209mm max	15'5" x 13'10"
Kitchen/Breakfast	3705 x 2525mm	12'2" x 8'3"
WC	1606 x 875mm	5'3" x 2'10"

## First Floor

Bedroom 1	5190 x 2775mm	17'0" x 9'1"
En-suite	2111 x 1522mm	6'11" x 5'0"
Bedroom 2	4740 x 2961mm	15'7" x 9'9"
Bedroom 3	3441 x 3119mm	11'3" x 10'3"
Bathroom	2590 x 1745mm	8'6" x 5'9"



Ground Floor



First Floor

**KEY** Double switched socket outlet Telephone outlet TV aerial outlet Ceiling Lighting Boiler

Computer generated images are for illustrative purposes only and individual features often vary from one plot to another. Floor plans are indicative only to give a general indication of the proposed development and floor layout. The dimensions are accurate to within + or -50mm. Dimensions should not be used for carpet sizes, appliance spaces or items of furniture. Please ask our Sales Advisers for details of the treatments specified for individual plots. Computer generated images are for general guidance only and are not intended to form part of any contract or warranty. Furniture shown is for illustrative purposes only. Computer generated image and photographs are for general guidance only and are not intended to form part of any contract or warranty.

H438---5 / SP74086/0511



# The Irving

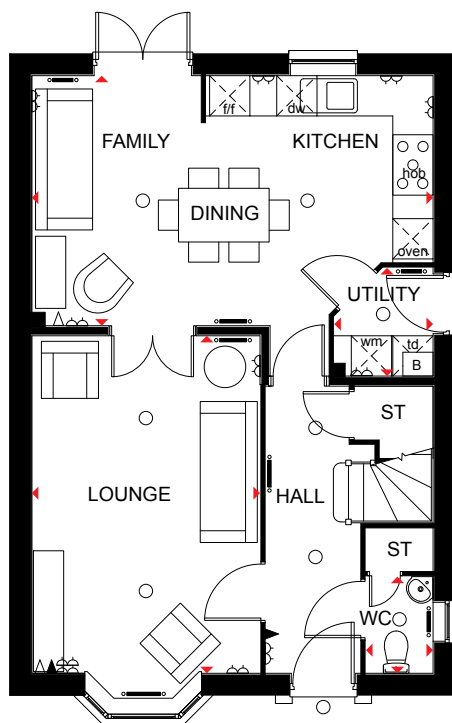
Four bedroom detached home

## Ground Floor

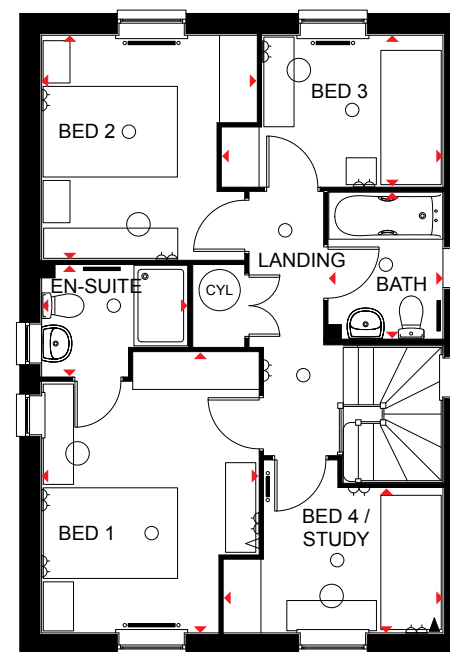
Lounge	3400 x 5028 mm	11'2" x 16'6"
Kitchen/Family /Dining	5978 x 3725 mm	19'7" x 12'3"
Utility	1611 x 1472 mm	5'3" x 4'10"
WC	1440 x 1000 mm	4'9" x 3'3"

## First Floor

Bed 1	4177 x 3228 mm	11'11" x 13'8"
En-suite	1650 x 2175 mm	5'5" x 7'2"
Bed 2	3339 x 3200 mm	10'11" x 10'6"
Bed 3	2250 x 3289 mm	7'5" x 10'9"
Bed 4/Study	2153 x 3261 mm	7'1" x 10'8"
Bath	2175 x 1700 mm	7'2" x 5'7"



Ground Floor



First Floor

## KEY

○ Light fitting	◀ Telephone outlet point	— Radiator	B Boiler	CYL Cylinder	wm Washing machine space	td Tumble dryer space
◡ Electric socket	◁ T.V. aerial socket	— Towel radiator	ST Store	f/f Fridge/freezer space	dw Dishwasher space	◄► Dimension location

Computer generated images are for illustrative purposes only and individual features often vary from one plot to another. Floor plans are indicative only to give a general indication of the proposed development and floor layout. The dimensions are accurate to within + or -50mm. Dimensions should not be used for carpet sizes, appliance spaces or items of furniture. Please ask our Sales Advisers for details of the treatments specified for individual plots. Computer generated images are for general guidance only and are not intended to form part of any contract or warranty. Furniture shown is for illustrative purposes only. Computer generated image and photographs are for general guidance only and are not intended to form part of any contract or warranty.



# The Drummond

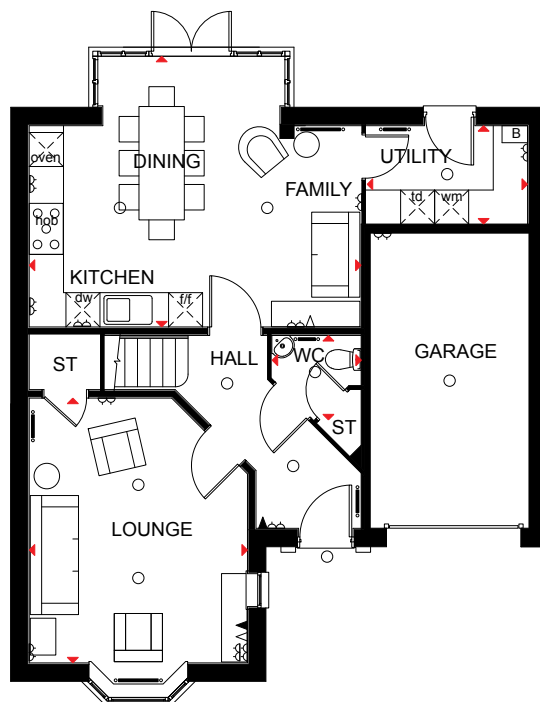
Four bedroom detached home

## Ground Floor

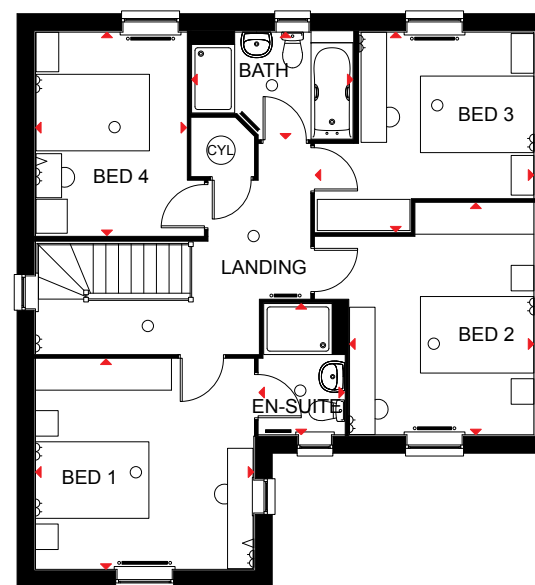
Lounge	3850 x 4671 mm	12'8" x 15'4"
Kitchen/Family/	5855 x 4775 mm	19'3" x 15'8"
Dining		
Utility	2846 x 1735 mm	9'4" x 5'8"
WC	1490 x 1575 mm	4'1" x 5'2"

## First Floor

Bed 1	3850 x 3711 mm	12'8" x 12'2"
En-suite	1511 x 2315 mm	4'11" x 7'7"
Bed 2	3251 x 4088 mm	10'8" x 13'5"
Bed 3	3858 x 3525 mm	12'8" x 11'7"
Bed 4	3589 x 2665 mm	11'9" x 8'9"
Bath	1886 x 2846 mm	6'2" x 9'4"



Ground Floor



First Floor

## KEY

○ Light fitting	◀ Telephone outlet point	— Radiator	B Boiler	CYL Cylinder	wm Washing machine space	td Tumble dryer space
⏏ Electric socket	◁ T.V. aerial socket	— Towel radiator	ST Store	f/f Fridge/freezer space	dw Dishwasher space	◄► Dimension location

Computer generated images are for illustrative purposes only and individual features often vary from one plot to another. Floor plans are indicative only to give a general indication of the proposed development and floor layout. The dimensions are accurate to within + or -50mm. Dimensions should not be used for carpet sizes, appliance spaces or items of furniture. Please ask our Sales Advisers for details of the treatments specified for individual plots. Computer generated images are for general guidance only and are not intended to form part of any contract or warranty. Furniture shown is for illustrative purposes only. Computer generated image and photographs are for general guidance only and are not intended to form part of any contract or warranty.

H438-...5 / SP74086/0511



# The Millford

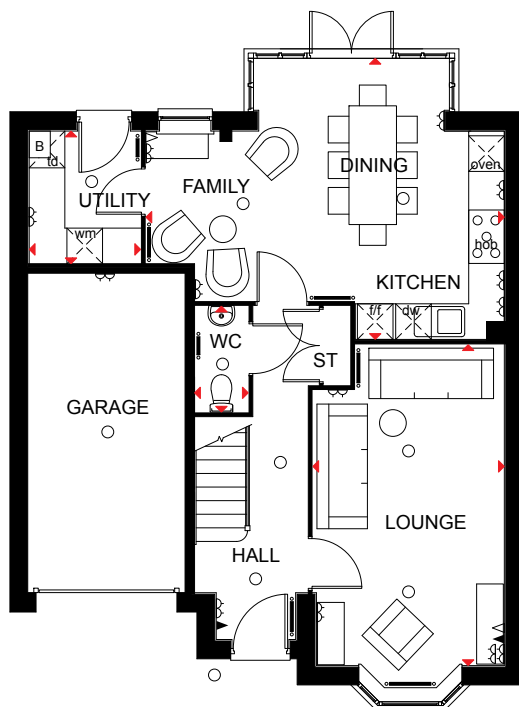
Four bedroom detached home

## Ground Floor

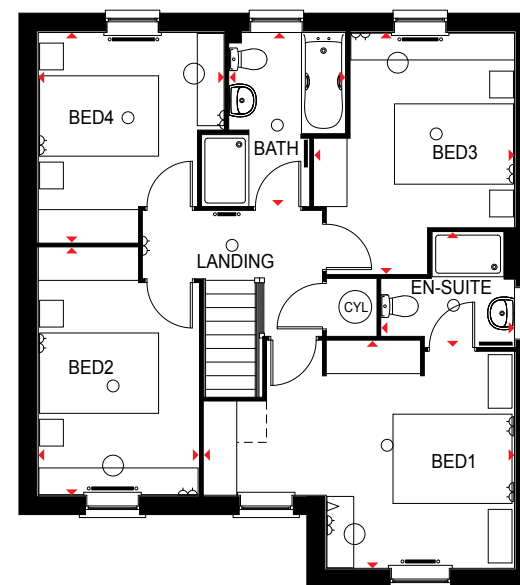
Lounge	5406 x 3226 mm	17'9" x 10'7"
Kitchen/Family/Dining	6037 x 4735 mm	19'10" x 15'6"
Utility	2235 x 1877 mm	7'4" x 6'2"
WC	1786 x 905 mm	5'10" x 3'0"

## First Floor

Bed 1	5218 x 3822 mm	17'1" x 12'6"
En-suite	2235 x 1924 mm	7'4" x 6'4"
Bed 2	4161 x 2696 mm	13'8" x 8'10"
Bed 3	4056 x 3365 mm	13'4" x 11'0"
Bed 4	3527 x 3124 mm	11'7" x 10'3"
Bath	2913 x 1950 mm	9'7" x 6'5"



Ground Floor



First Floor

## KEY

○ Light fitting	◀ Telephone outlet point	—○— Radiator	B Boiler	CYL Cylinder	wm Washing machine space	td Tumble dryer space
◡ Electric socket	◁ T.V. aerial socket	— Towel radiator	ST Store	f/f Fridge/freezer space	dw Dishwasher space	◄► Dimension location

Computer generated images are for illustrative purposes only and individual features often vary from one plot to another. Floor plans are indicative only to give a general indication of the proposed development and floor layout. The dimensions are accurate to within + or -50mm. Dimensions should not be used for carpet sizes, appliance spaces or items of furniture. Please ask our Sales Advisers for details of the treatments specified for individual plots. Computer generated images are for general guidance only and are not intended to form part of any contract or warranty. Furniture shown is for illustrative purposes only. Computer generated image and photographs are for general guidance only and are not intended to form part of any contract or warranty.

H438---5 / SP74086/0511



# The Bradbury

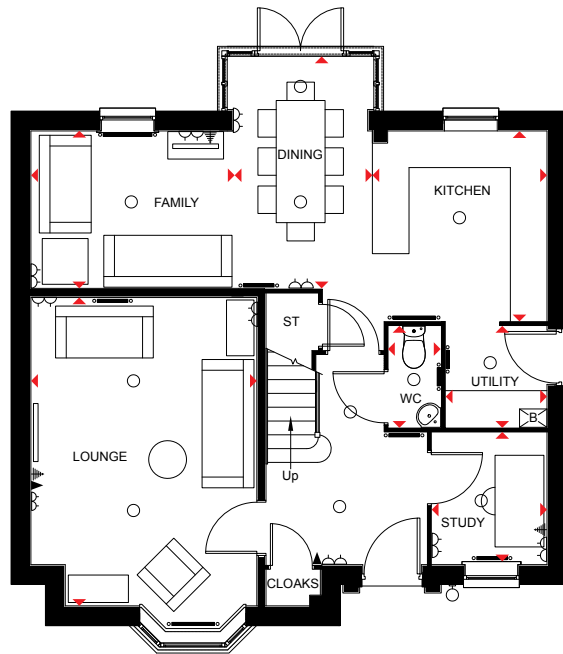
Four bedroom detached home

## Ground Floor

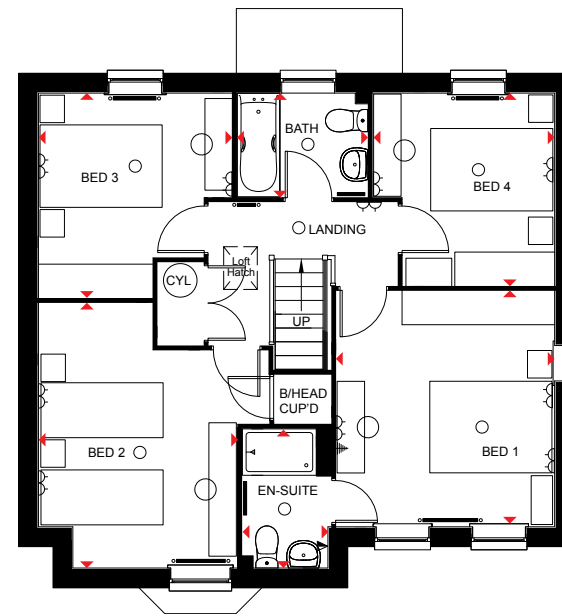
Lounge	5049 x 3700 mm	16'7" x 12'2"
Kitchen/Family/Breakfast	5052 x 3803 mm	16'7" x 12'6"
Dining	3250 x 2639 mm	10'8" x 8'8"
Study	2160 x 2050 mm	7'1" x 6'9"
Utility	1653 x 1653 mm	5'5" x 5'5"
WC	1653 x 849 mm	5'5" x 2'9"

## First Floor

Bed 1	3573 x 3860 mm	11'9" x 12'8"
En-suite	2278 x 1450 mm	7'6" x 4'9"
Bed 2	4337 x 3251 mm	14'3" x 10'8"
Bed 3	3351 x 3163 mm	11'0" x 10'5"
Bed 4	3153 x 2975 mm	10'4" x 9'9"
Bath	2136 x 1700 mm	7'0" x 5'7"



Ground Floor



First Floor

## KEY

○ Light fitting	⚡ Telephone outlet point	— Radiator	⚡ Shaver socket	ST Store	◄◄ Dimension location
⏏ Electric socket	⏏ T.V. aerial socket	— Towel radiator	B Boiler	CYL Cylinder	

Computer generated images are for illustrative purposes only and individual features often vary from one plot to another. Floor plans are indicative only to give a general indication of the proposed development and floor layout. The dimensions are accurate to within + or -50mm. Dimensions should not be used for carpet sizes, appliance spaces or items of furniture. Please ask our Sales Advisers for details of the treatments specified for individual plots. Computer generated images are for general guidance only and are not intended to form part of any contract or warranty. Furniture shown is for illustrative purposes only. Computer generated image and photographs are for general guidance only and are not intended to form part of any contract or warranty.



# The Winstone

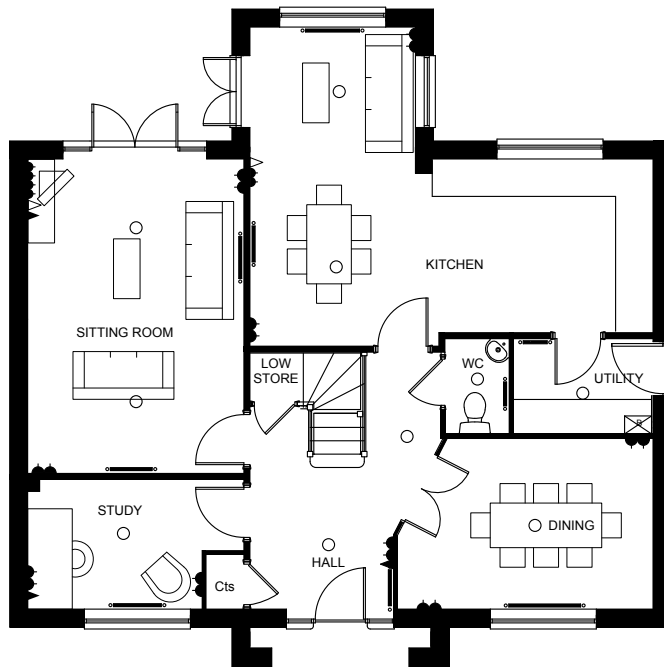
Four bedroom detached home

## Ground Floor

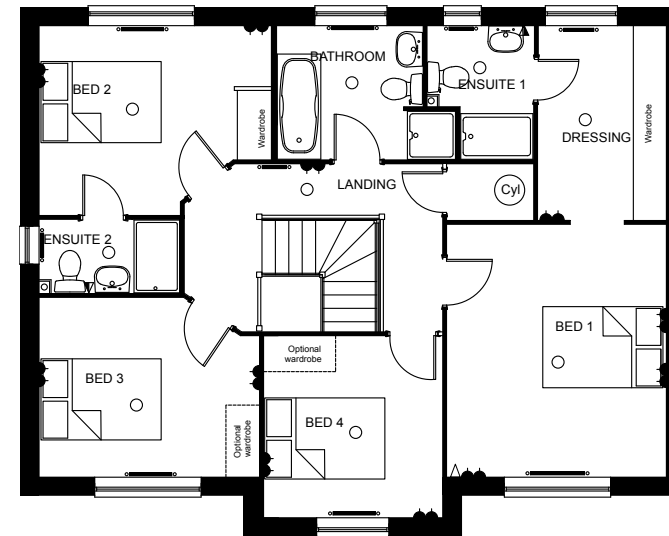
Lounge 3	560 x 5200mm	11' 10" x 17' 1"
Kitchen/Breakfast		
Family Room	6680 x 5278mm	21' 11" x 17' 4"
Utility	2300 x 1590mm	7' 7" x 5' 3"
WC	1050 x 1565mm	3' 5" x 5' 2"
Dining	4267 x 2837mm	14' 0" x 9' 4"
Study	2903 x 2165mm	9' 6" x 7' 1"

## First Floor

Bedroom 1	3660 x 4210mm	12' 0" x 13' 10"
EnSuite 1	1760 x 1436mm	5' 9" x 4' 8"
Dressing	2150 x 3230mm	7' 1" x 10' 7"
Bedroom 2	3850 x 3171mm	12' 8" x 10' 5"
EnSuite 2	1580 x 1200mm	5' 2" x 3' 11"
Bedroom 3	3660 x 2994mm	12' 0" x 9' 10"
Bathroom	2415 x 2236mm	7' 11" x 7' 4"
Bedroom 4	2970 x 3032mm	9' 9" x 9' 11"



Ground Floor



First Floor

KEY Double switched socket outlet Telephone outlet point T.V. aerial socket Shaver socket Radiator Light fitting B Boiler

Computer generated images are for illustrative purposes only and individual features often vary from one plot to another. Floor plans are indicative only to give a general indication of the proposed development and floor layout. The dimensions are accurate to within + or -50mm. Dimensions should not be used for carpet sizes, appliance spaces or items of furniture. Please ask our Sales Advisers for details of the treatments specified for individual plots. Computer generated images are for general guidance only and are not intended to form part of any contract or warranty. Furniture shown is for illustrative purposes only. Computer generated image and photographs are for general guidance only and are not intended to form part of any contract or warranty.

H438---5 / SP74086/0511



# The Cornell

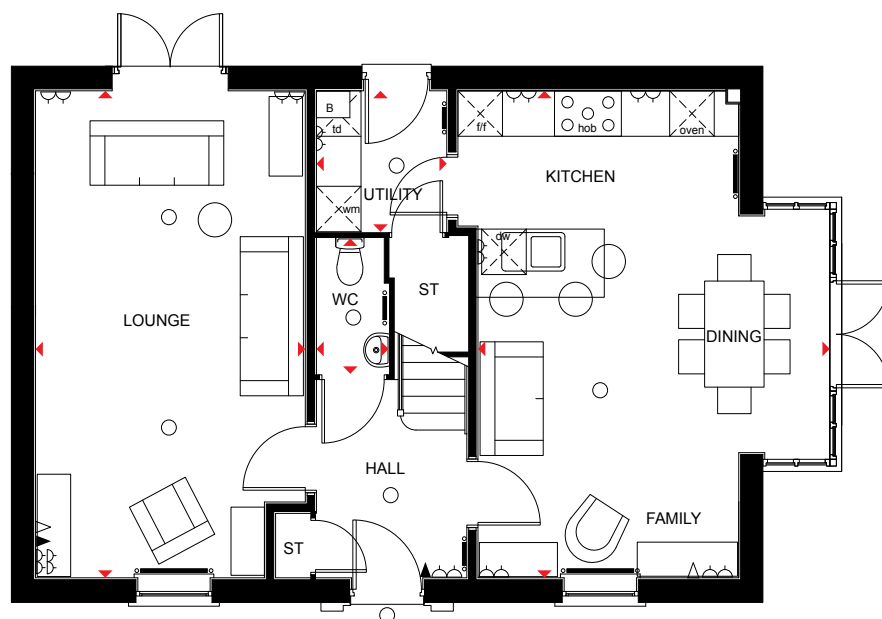
Four bedroom detached home

## Ground Floor

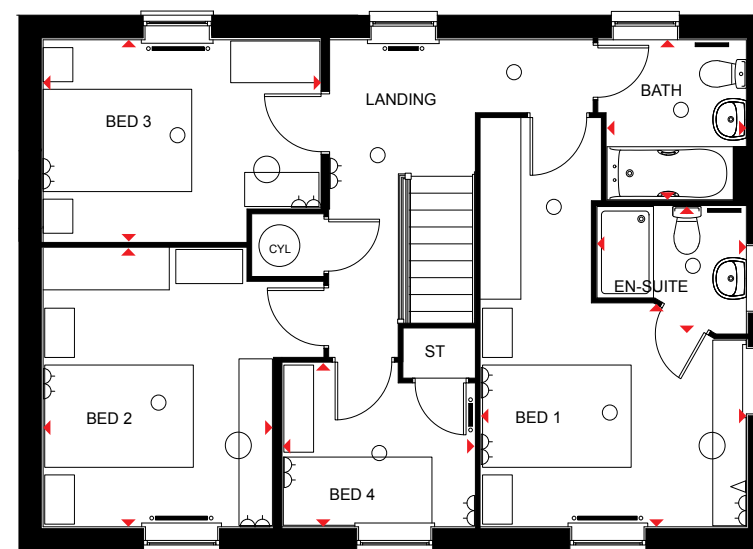
Lounge	6427 x 3631 mm	21'1" x 11'1"
Kitchen/Family/Dining	6427 x 4735 mm	21'1" x 15'6"
Utility	1860 x 1754 mm	6'1" x 5'9"
WC	1786 x 971 mm	5'10" x 3'2"

## First Floor

Bed 1	2942 x 3571 mm	9'8" x 11'9"
En-suite	2010 x 1670 mm	6'7" x 5'6"
Bed 2	3677 x 3100 mm	12'1" x 10'2"
Bed 3	3741 x 2661 mm	12'3" x 8'9"
Bed 4	2590 x 2160 mm	8'6" x 7'1"
Bath	2111 x 1875 mm	6'11" x 6'2"



Ground Floor



First Floor

## KEY

○ Light fitting	◀ Telephone outlet point	—○ Radiator	B Boiler	CYL Cylinder	wm Washing machine space	td Tumble dryer space
◡ Electric socket	◁ T.V. aerial socket	— Towel radiator	ST Store	f/f Fridge/freezer space	dw Dishwasher space	◄◄ Dimension location

Computer generated images are for illustrative purposes only and individual features often vary from one plot to another. Floor plans are indicative only to give a general indication of the proposed development and floor layout. The dimensions are accurate to within + or -50mm. Dimensions should not be used for carpet sizes, appliance spaces or items of furniture. Please ask our Sales Advisers for details of the treatments specified for individual plots. Computer generated images are for general guidance only and are not intended to form part of any contract or warranty. Furniture shown is for illustrative purposes only. Computer generated image and photographs are for general guidance only and are not intended to form part of any contract or warranty.

H438---5 / SP74086/0511



# The Layton

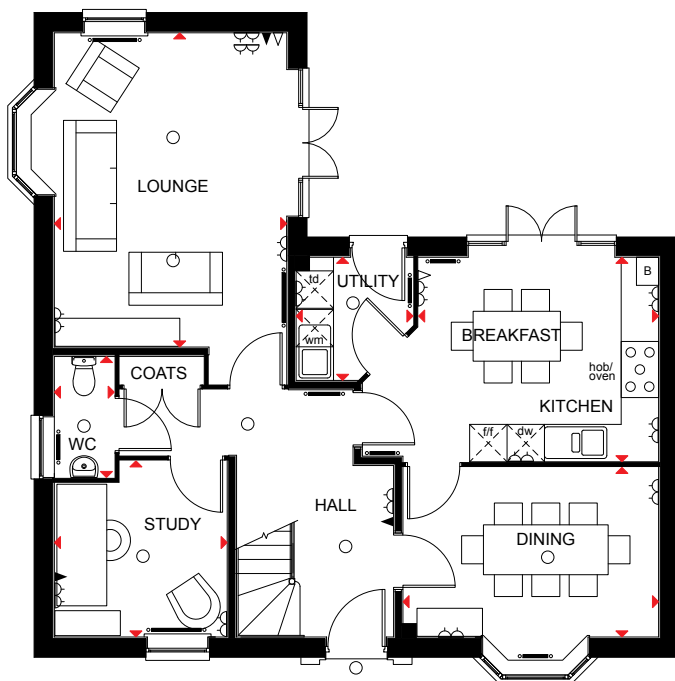
Four bedroom detached home

## Ground Floor

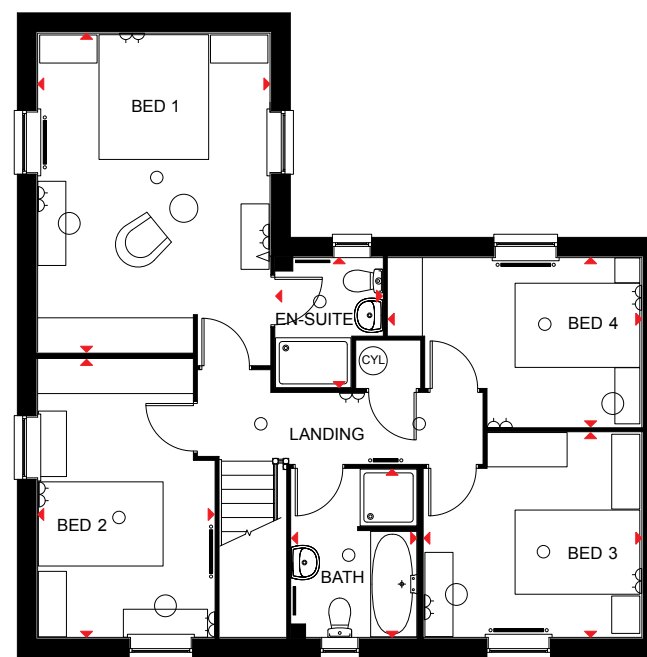
Lounge	5040 x 3727 mm	6'6" x 12'3"
Utility	1975 x 1875 mm	6'6" x 6'2"
Kitchen/Breakfast	3849 x 3280mm	12'8" x 10'9"
Dining	4100 x 2721 mm	13'5" x 8'11"
Study	2772 x 2826 mm	9'1" x 9'3"
WC	1942 x 961 mm	6'4" x 3'2"

## First Floor

Bed 1	5119 x 3727 mm	16'10" x 12'3"
En-suite	1715 x 2085 mm	5'8" x 6'10"
Bed 2	4460 x 2833 mm	14'8" x 9'4"
Bed 3	3498 x 3285 mm	11'6" x 10'9"
Bed 4	4070 x 2716 mm	13'4" x 8'11"
Bath	2698 x 2010 mm	8'10" x 6'7"



Ground Floor



First Floor

## KEY

○ Light fitting	◀ Telephone outlet point	— Radiator	B Boiler	CYL Cylinder	wm Washing machine space	td Tumble dryer space
◡ Electric socket	◁ T.V. aerial socket	— Towel radiator	ST Store	f/f Fridge/freezer space	dw Dishwasher space	◄ Dimension location

Computer generated images are for illustrative purposes only and individual features often vary from one plot to another. Floor plans are indicative only to give a general indication of the proposed development and floor layout. The dimensions are accurate to within + or -50mm. Dimensions should not be used for carpet sizes, appliance spaces or items of furniture. Please ask our Sales Advisers for details of the treatments specified for individual plots. Computer generated images are for general guidance only and are not intended to form part of any contract or warranty. Furniture shown is for illustrative purposes only. Computer generated image and photographs are for general guidance only and are not intended to form part of any contract or warranty.

H438---5 / SP74086/0511



# The Shelbourne

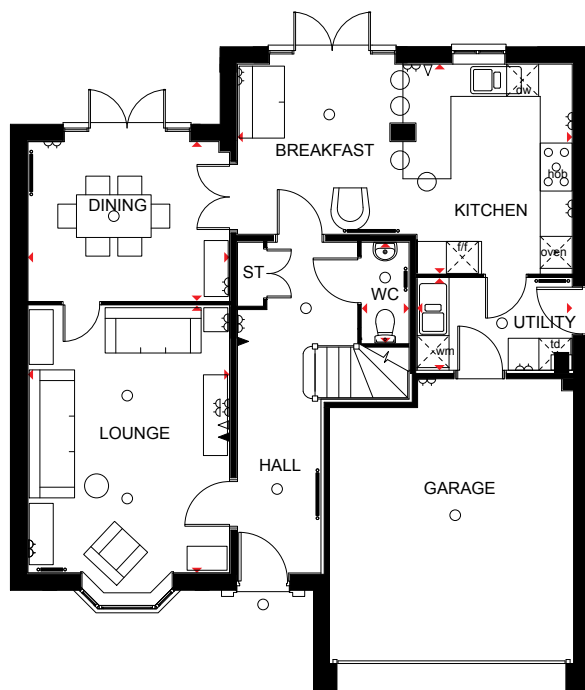
Four bedroom detached home

## Ground Floor

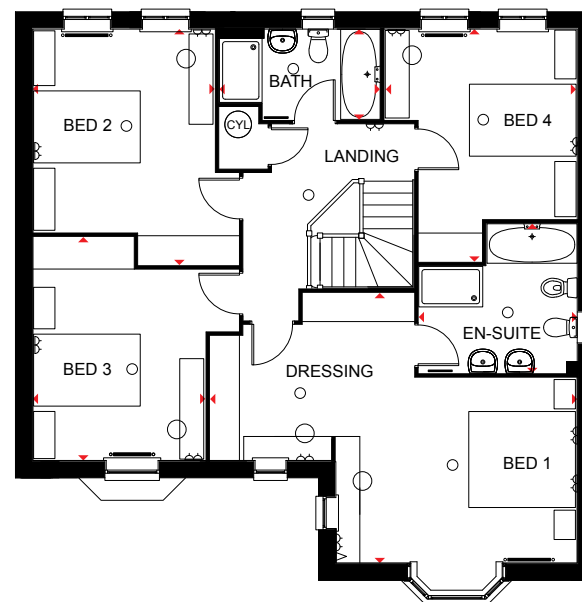
Lounge	3783 x 5015 mm	12'5" x 16'5"
Kitchen/Breakfast/Family	6277 x 3925 mm	20'7" x 12'11"
Dining	3783 x 2986 mm	12'5" x 9'10"
Utility	2910 x 1727 mm	9'7" x 5'8"
WC	1890 x 885 mm	6'2" x 2'11"

## First Floor

Bed 1/ Dressing	6885 x 5066 mm	22'7" x 16'7"
En-suite	2972 x 2801 mm	9'9" x 9'2"
Bed 2	4425 x 3411 mm	14'6" x 11'2"
Bed 3	3236 x 4190 mm	10'7" x 13'9"
Bed 4	4361 x 3611 mm	14'4" x 11'10"
Bath	3010 x 1700 mm	9'11" x 5'7"



Ground Floor



First Floor

## KEY

○ Light fitting	◀ Telephone outlet point	— Radiator	B Boiler	CYL Cylinder	wm Washing machine space	td Tumble dryer space
◡ Electric socket	◁ T.V. aerial socket	— Towel radiator	ST Store	f/f Fridge/freezer space	dw Dishwasher space	◄► Dimension location

Computer generated images are for illustrative purposes only and individual features often vary from one plot to another. Floor plans are indicative only to give a general indication of the proposed development and floor layout. The dimensions are accurate to within + or -50mm. Dimensions should not be used for carpet sizes, appliance spaces or items of furniture. Please ask our Sales Advisers for details of the treatments specified for individual plots. Computer generated images are for general guidance only and are not intended to form part of any contract or warranty. Furniture shown is for illustrative purposes only. Computer generated image and photographs are for general guidance only and are not intended to form part of any contract or warranty.

H438---5 / SP74086/0511



# The Holden

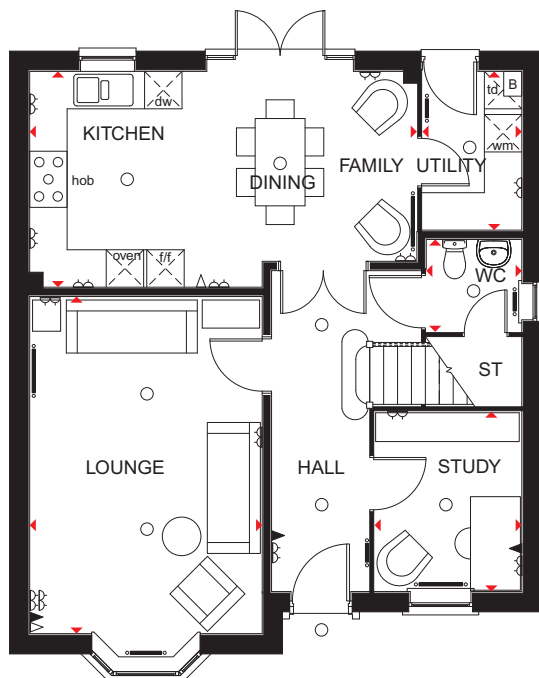
Four bedroom detached home

## Ground Floor

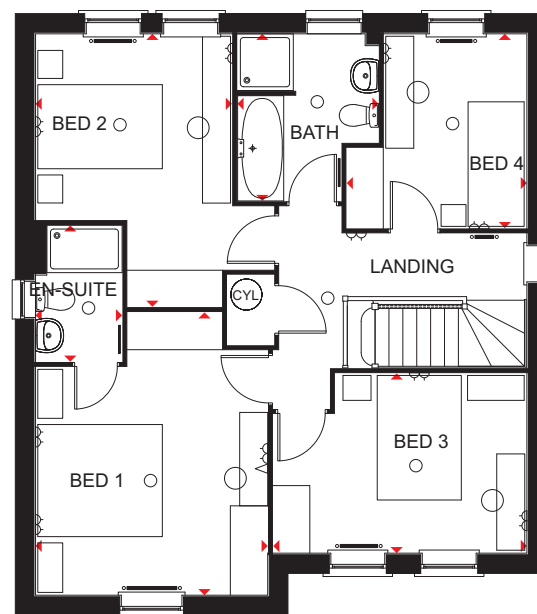
Lounge	3728 x 5405 mm	12'3" x 17'9"
Kitchen/Family/Dining	6208 x 3460 mm	20'4" x 11'4"
Study	2886 x 2361 mm	9'5" x 7'9"
Utility	2545 x 1593 mm	8'4" x 5'3"
WC	1532 x 1481 mm	5'0" x 4'10"

## First Floor

Bed 1	3728 x 4543 mm	12'3" x 14'11"
En-suite	1390 x 2190 mm	4'7" x 7'2"
Bed 2	3153 x 4384 mm	10'4" x 14'5"
Bed 3	2886 x 4073 mm	9'6" x 13'4"
Bed 4	3120 x 2893 mm	10'3" x 9'6"
Bath	2685 x 2266 mm	8'10" x 7'5"



Ground Floor



First Floor

## KEY

○ Light fitting	◀ Telephone outlet point	— Radiator	B Boiler	CYL Cylinder	wm Washing machine space	td Tumble dryer space
◊ Electric socket	◁ T.V. aerial socket	— Towel radiator	ST Store	f/f Fridge/freezer space	dw Dishwasher space	◄ Dimension location

Computer generated images are for illustrative purposes only and individual features often vary from one plot to another. Floor plans are indicative only to give a general indication of the proposed development and floor layout. The dimensions are accurate to within + or -50mm. Dimensions should not be used for carpet sizes, appliance spaces or items of furniture. Please ask our Sales Advisers for details of the treatments specified for individual plots. Computer generated images are for general guidance only and are not intended to form part of any contract or warranty. Furniture shown is for illustrative purposes only. Computer generated image and photographs are for general guidance only and are not intended to form part of any contract or warranty.



# The Emerson

Five bedroom detached home

## Ground Floor

Lounge	6580 x 3573 mm	21'7" x 11'9"
Kitchen/Family/	5107 x 4067 mm	16'9" x 13'4"
Breakfast		
Utility	1950 x 1531 mm	6'5" x 5'0"
Dining	3052 x 2941 mm	10'0" x 9'8"
WC	1531 x 1013 mm	5'0" x 3'4"

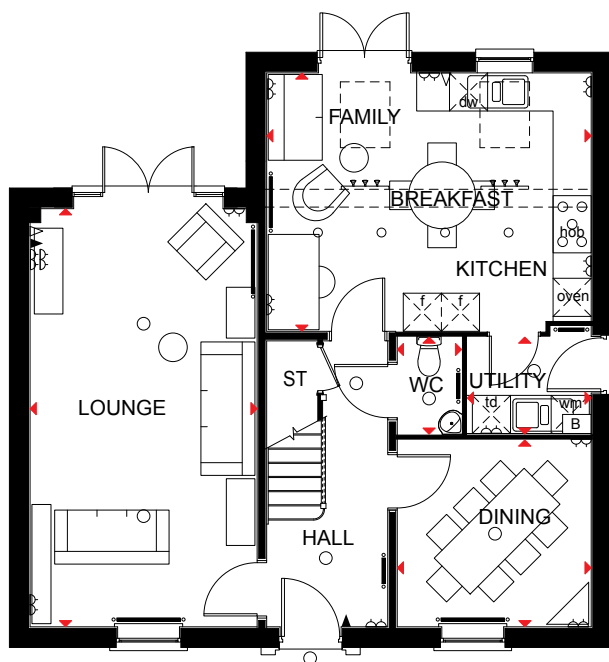
## First Floor

Bed 1	3931 x 3634 mm	12'11" x 11'11"
Dressing	2560 x 1929 mm	8'5" x 6'4"
En-suite	1385 x 2560 mm	4'7" x 8'5"
Bed 3	3054 x 3147 mm	10'0" x 10'4"
Bed 4	3054 x 2744 mm	10'0" x 9'0"
Bath	2173 x 1991 mm	7'2" x 6'6"

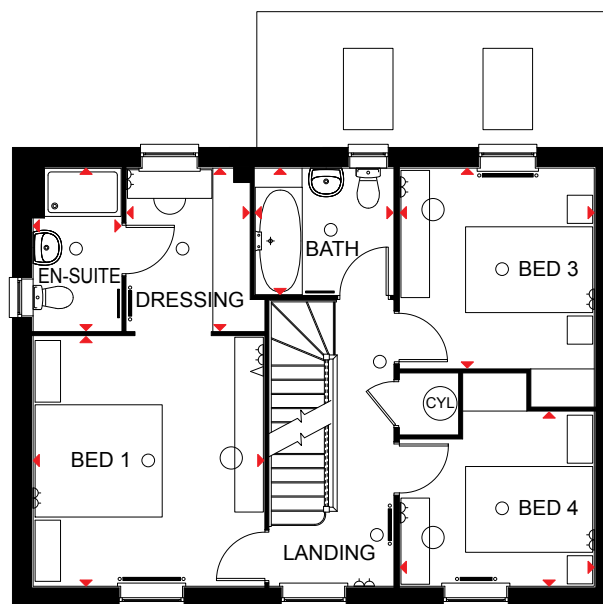
## Second Floor

Bed 2	4402 * x 3561 mm	14'5" * x 11'8"
Bed 5	3634 x 2602 * mm	11'11" x 8'6" *
Shower	2606 x 1470 * mm	8'7" x 4'10" *

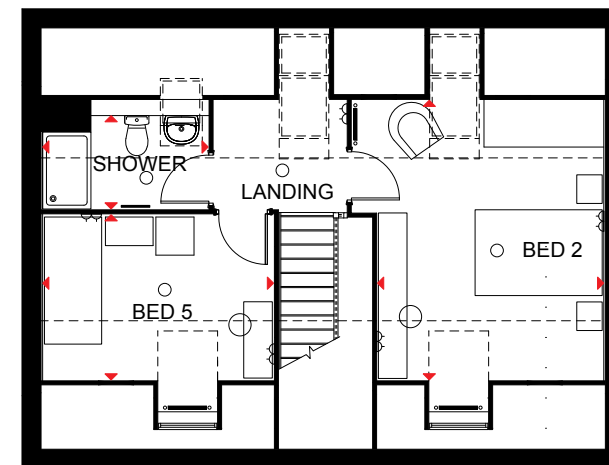
\*Overall floor dimension includes lowered ceiling areas



Ground Floor



First Floor



Second Floor

## KEY

○ Light fitting	◀ Telephone outlet point	— Radiator	B Boiler	CYL Cylinder	wm Washing machine space	td Tumble dryer space
◊ Electric socket	◁ T.V. aerial socket	— Towel radiator	ST Store	f/f Fridge/freezer space	dw Dishwasher space	◄ Dimension location

Computer generated images are for illustrative purposes only and individual features often vary from one plot to another. Floor plans are indicative only to give a general indication of the proposed development and floor layout. The dimensions are accurate to within + or -50mm. Dimensions should not be used for carpet sizes, appliance spaces or items of furniture. Please ask our Sales Advisers for details of the treatments specified for individual plots. Computer generated images are for general guidance only and are not intended to form part of any contract or warranty. Furniture shown is for illustrative purposes only. Computer generated image and photographs are for general guidance only and are not intended to form part of any contract or warranty.



# The Balshaw

Five bedroom detached home

## Ground Floor

Lounge	6153 x 3750 mm	20'2" x 12'4"
Kitchen/Family/		
Breakfast	6478 x 5453 mm	21'3" x 17'11"
Utility	2250 x 2325 mm	7'5" x 7'8"
Dining	3950 x 3287 mm	13'0" x 10'9"
Den	3500 x 3911 mm	11'6" x 12'10"
WC	1775 x 1161 mm	5'10" x 3'10"

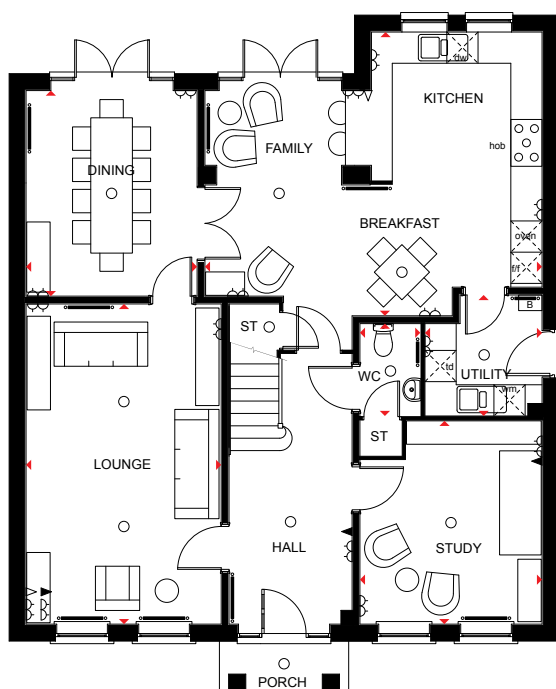
## First Floor

Bed 1	5942 x 3811 mm	19'6" x 12'6"
Dressing	3299 x 2400 mm	10'10" x 7'10"
En-suite 1	3268 x 2327 mm	10'9" x 7'8"
Bed 2	3889 x 4089 mm	12'9" x 13'5"
En-suite 2	1686 x 2386 mm	5'6" x 7'10"
Bed 3	4628 x 3464 mm	15'2" x 11'4"

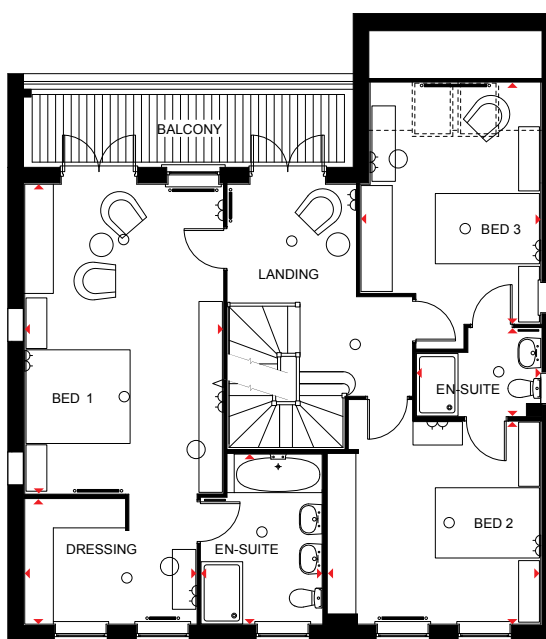
## Second Floor

Bed 4	6203 x 3811 mm	20'4" x 12'6"
En-suite 3	2838 x 2155 mm	9'4" x 7'1"*
Bed 5	3714 x 3688 mm	12'2" x 12'1"
Bath	1700 x 2275 mm	5'7" x 7'6"

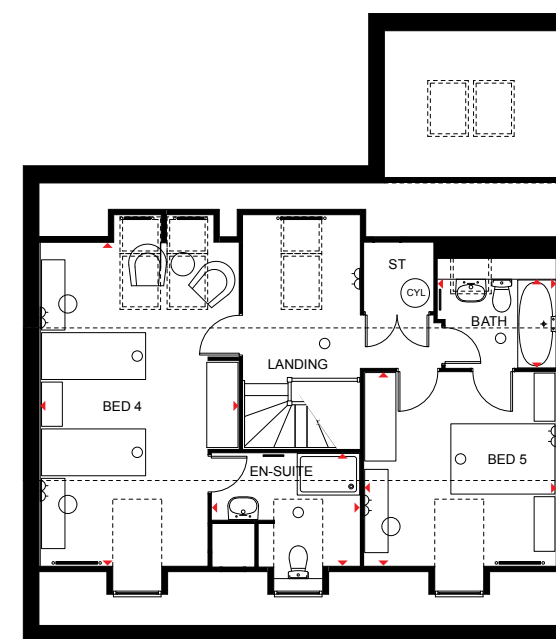
\* Overall floor dimension includes lowered ceiling areas



Ground Floor



First Floor



Second Floor

## KEY

○	Light fitting	◀	Telephone outlet point	—○—	Radiator	B	Boiler	CYL	Cylinder	wm	Washing machine space	td	Tumble dryer space
◊	Electric socket	◁	T.V. aerial socket	—■—	Towel radiator	ST	Store	f/f	Fridge/freezer space	dw	Dishwasher space	◄►	Dimension location

Computer generated images are for illustrative purposes only and individual features often vary from one plot to another. Floor plans are indicative only to give a general indication of the proposed development and floor layout. The dimensions are accurate to within + or -50mm. Dimensions should not be used for carpet sizes, appliance spaces or items of furniture. Please ask our Sales Advisers for details of the treatments specified for individual plots. Computer generated images are for general guidance only and are not intended to form part of any contract or warranty. Furniture shown is for illustrative purposes only. Computer generated image and photographs are for general guidance only and are not intended to form part of any contract or warranty.



# The Lichfield

Five bedroom detached home

## Ground Floor

Lounge	5084 x 4275 mm	16'8" x 14'0"
Kitchen/Family/	3775 x 7115 mm	12'5" x 23'4"
Breakfast Utility	2500 x 1675 mm	8'2" x 5'6"
Dining	3550 x 2994 mm	11'8" x 9'10"
Study	3605 x 2539 mm	11'10" x 8'4"
WC	1675 x 1016 mm	5'6" x 3'4"

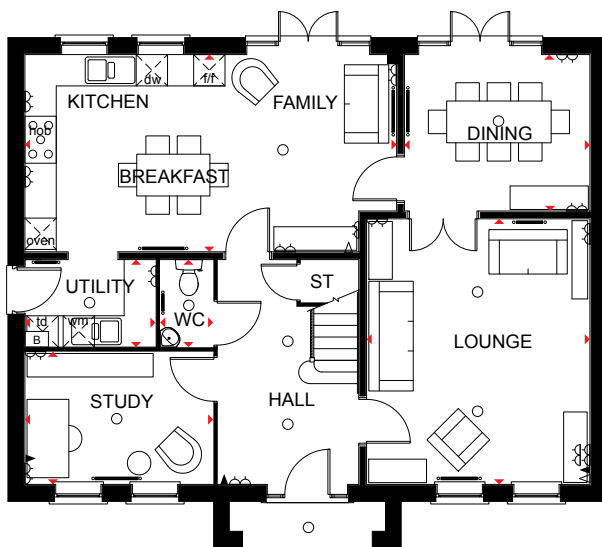
## First Floor

Bed 1	5084 x 4275 mm	16'8" x 14'0"
Dressing	2994 x 2249 mm	9'10" x 7'5"
En-suite	2994 x 2500 mm	9'10" x 8'2"
Bed 4	3848 x 4303 mm	12'8" x 14'1"
Bed 5	3509 x 4450 mm	11'6" x 14'7"
Bath 1	2268 x 2708 mm	7'5" x 8'11"

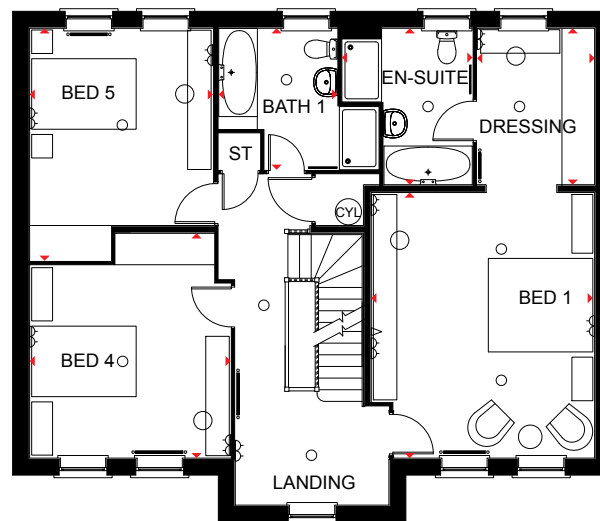
## Second Floor

Bed 2	5409 * x 3465 mm	17'9" * x 11'4"
Bed 3	5409 * x 4336 mm	17'9" * x 14'3"
Bath 2	1733 * x 3715 mm	5'8" * x 12'2"

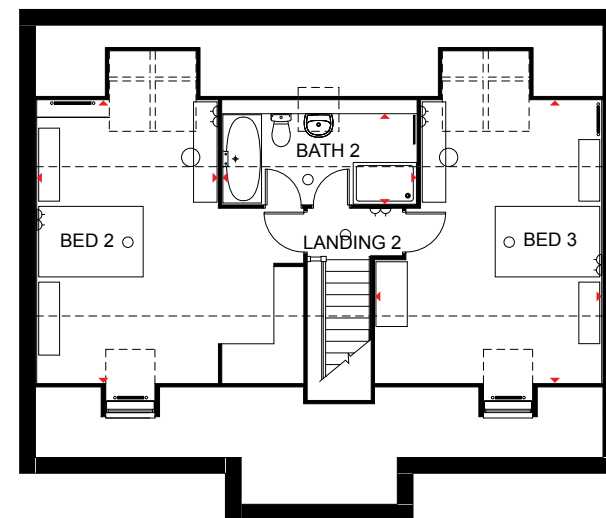
\*Overall floor dimension includes lowered ceiling areas



Ground Floor



First Floor



Second Floor

## KEY

○ Light fitting	◀ Telephone outlet point	— Radiator	B Boiler	CYL Cylinder	wm Washing machine space	td Tumble dryer space
◊ Electric socket	◁ T.V. aerial socket	— Towel radiator	ST Store	f/f Fridge/freezer space	dw Dishwasher space	◄ Dimension location

Computer generated images are for illustrative purposes only and individual features often vary from one plot to another. Floor plans are indicative only to give a general indication of the proposed development and floor layout. The dimensions are accurate to within + or -50mm. Dimensions should not be used for carpet sizes, appliance spaces or items of furniture. Please ask our Sales Advisers for details of the treatments specified for individual plots. Computer generated images are for general guidance only and are not intended to form part of any contract or warranty. Furniture shown is for illustrative purposes only. Computer generated image and photographs are for general guidance only and are not intended to form part of any contract or warranty.

H438---5 / SP74086/0511



# The Moorecroft

Five bedroom detached home

## Ground Floor

Lounge	5490 x 4290 mm	18'0" x 14'1"
Kitchen/Dining	6540 x 4100 mm	21'5" x 13'5"
Study	2840 x 2861 mm	9'4" x 9'5"
Utility	2425 x 1750 mm	7'11" x 5'9"
WC	1775 x 998 mm	5'10" x 3'3"

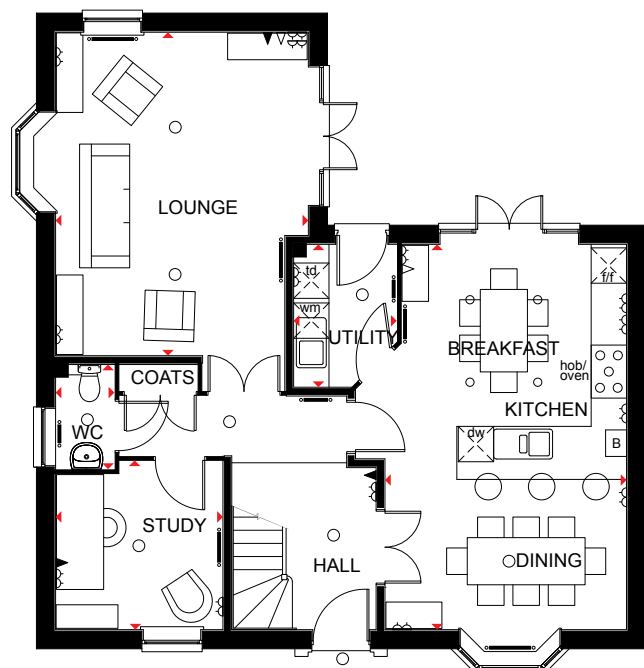
## First Floor

Bed 1	4290 x 3486 mm	14'1" x 11'5"
En-suite 1	2225 x 2525 mm	7'4" x 8'3"
Bed 3	2879 x 3929 mm	9'5" x 12'11"
Bed 4	3773 x 2711 mm	12'5" x 8'11"
Bed 5	3740 x 2798 mm	12'3" x 9'2"
Bath	2698 x 2124 mm	8'10" x 7'0"

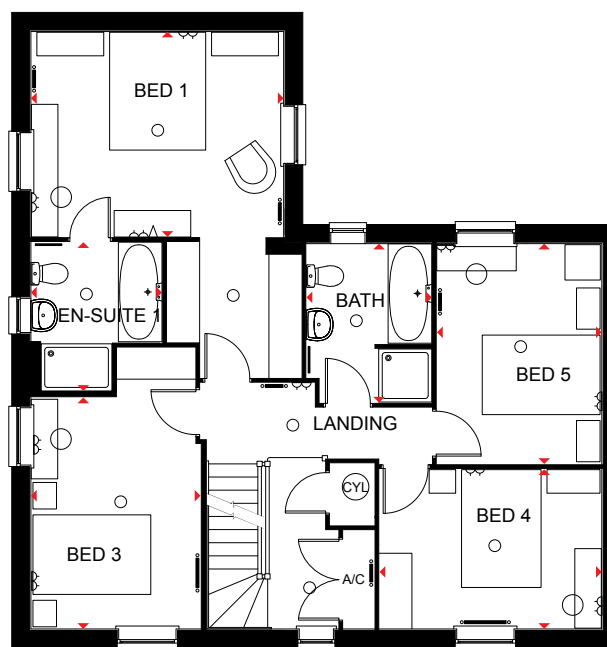
## Second Floor

Bed 2	5437 x 4790 * mm	17'10" x 15'9" *
En-suite 2	1437 * x 2289 mm	4'9" * x 7'6" *
Den	4525 x 2940 * mm	14'10" x 9'8" *
Shower	1583 x 2800 * mm	5'2" x 9'2" *

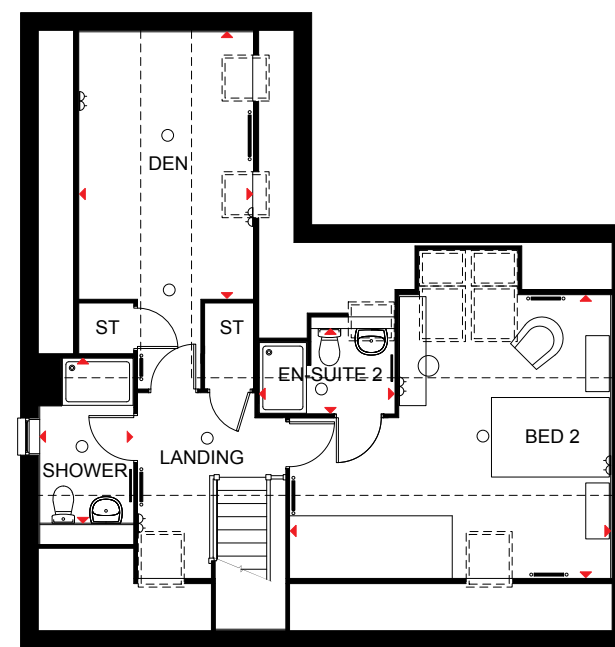
\*Overall floor dimension includes lowered ceiling areas



Ground Floor



First Floor



Second Floor

## KEY

○ Light fitting	◀ Telephone outlet point	— Radiator	B Boiler	CYL Cylinder	wm Washing machine space	td Tumble dryer space
◊ Electric socket	◊ T.V. aerial socket	— Towel radiator	ST Store	f/f Fridge/freezer space	dw Dishwasher space	◄ Dimension location

Computer generated images are for illustrative purposes only and individual features often vary from one plot to another. Floor plans are indicative only to give a general indication of the proposed development and floor layout. The dimensions are accurate to within + or -50mm. Dimensions should not be used for carpet sizes, appliance spaces or items of furniture. Please ask our Sales Advisers for details of the treatments specified for individual plots. Computer generated images are for general guidance only and are not intended to form part of any contract or warranty. Furniture shown is for illustrative purposes only. Computer generated image and photographs are for general guidance only and are not intended to form part of any contract or warranty.



# The Glidewell

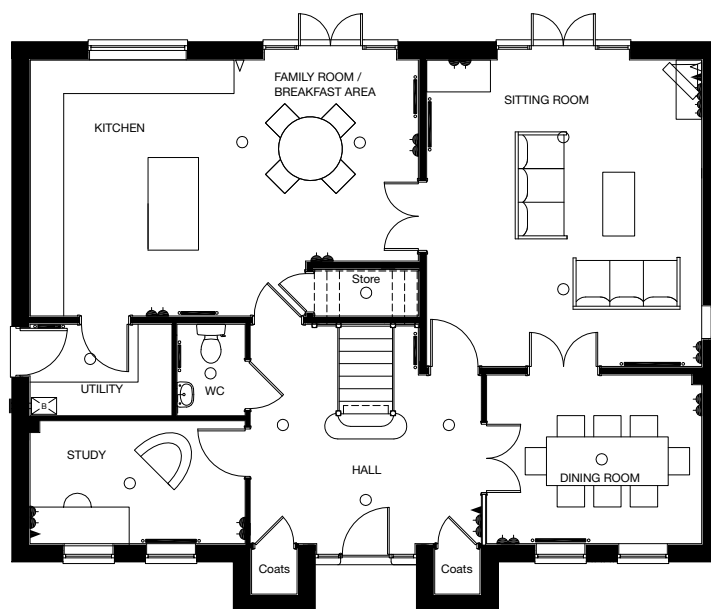
*Five bedroom home*

## Ground Floor

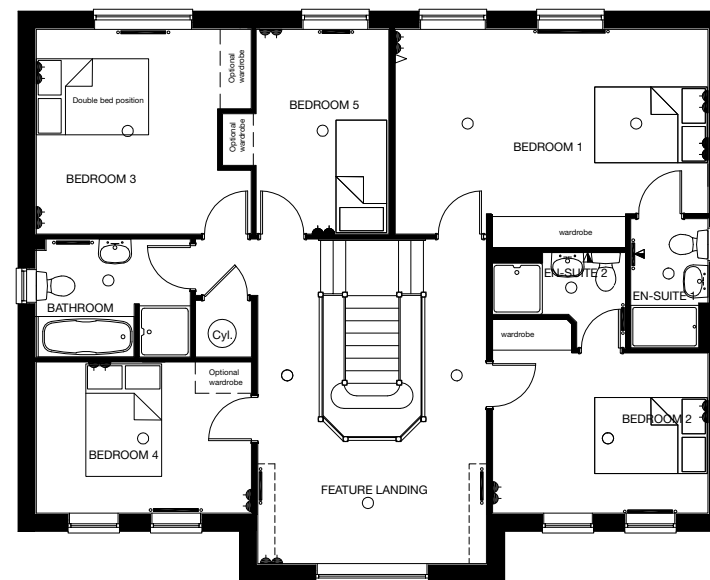
Sitting Room	5455 x 4891mm	17'10" x 16'0"
Kitchen/Family/ Breakfast Room	6909 x 4555mm	22'8" x 14'11"
Utility	2525 x 1625mm	8'3" x 5'4"
WC	1625 x 1159mm	5'4" x 3'9"
Dining Room	3828 x 3000mm	12'6" x 9'10"
Study	3828 x 2186mm	12'6" x 7'2"

## First Floor

Bedroom 1	5565 x 3280mm	18'3" x 10'9"
Bedroom 2	3831 x 2847mm	12'6" x 9'4"
Bedroom 3	3642 x 3224mm	11'11" x 10'6"
Bedroom 4	3831 x 2686mm	12'6" x 8'9"
Bedroom 5	3642 x 2362mm	11'11" x 7'9"
Bathroom	2743 x 2099mm	9'0" x 6'10"
En-Suite 1	1540 x 1375mm	5'0" x 4'6"
En-Suite 2	1484 x 1100mm	4'10" x 3'7"



Ground Floor



First Floor

KEY Double switched socket outlet Telephone outlet point T.V. aerial socket Shaver socket Radiator Light fitting B Boiler

Computer generated images are for illustrative purposes only and individual features often vary from one plot to another. Floor plans are indicative only to give a general indication of the proposed development and floor layout. The dimensions are accurate to within + or -50mm. Dimensions should not be used for carpet sizes, appliance spaces or items of furniture. Please ask our Sales Advisers for details of the treatments specified for individual plots. Computer generated images are for general guidance only and are not intended to form part of any contract or warranty. Furniture shown is for illustrative purposes only. Computer generated image and photographs are for general guidance only and are not intended to form part of any contract or warranty.

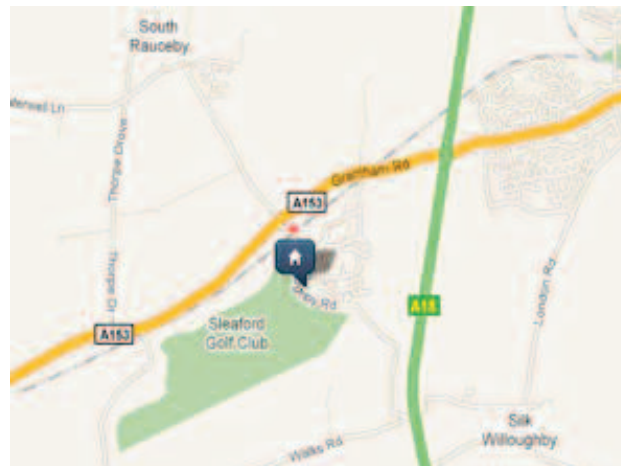
H438-...5 / SP74086/0511

## DeVessey Village

Willoughby Road, Greylees, Sleaford,  
Lincolnshire NG34 8GT

Telephone: 0844 8113388

A development of stylish 2, 3, 4, 5 and 6 bedroom homes situated  
in a rural village community.



Visit [www.dwh.co.uk](http://www.dwh.co.uk) or call 0844 8113388

This brochure and all the information detailed therein does not and will not constitute any part of any offer or contract, or be a representation inducing such a contract. This brochure and all photographs, illustrations, plans and sizes are indicative only to give a general indication of the proposed development and floor layouts. We aim to ensure that the room dimensions printed are correct to either 75mm (3") more or less than the actual dimension. David Wilson Homes operates a policy of continuous product development, therefore some features, specification and elevational treatments may vary at the discretion of David Wilson Homes.

David Wilson Homes reserves the right to alter any part of the development. None of the statements and information contained in this brochure are to be relied upon as statements or representations of fact, and any intending purchaser must satisfy him/herself by inspection or otherwise as to the correctness of any statement. Any intending purchaser is advised to contact David Wilson Homes to ascertain the availability of any type of property.



DAVID WILSON HOMES

WHERE QUALITY LIVES