



STRAKERS
FOR SALE
01249 652717
www.strakers.co.uk

CURATES
COTTAGE

Curates Cottage
Bremhill

STRAKERS

Curates Cottage Bremhill SN11 9LD

Curates Cottage is a delightful and thoughtfully extended character cottage located in an idyllic rural location at the heart of the picturesque and highly regarded Wiltshire village of Bremhill

- Village Location • Detached Cottage • Extended •
- Four Double Rooms • Ensuite Bathroom • Stunning Views •
- Outbuilding • Garage/Car Ports • •

Guide Price £680,000



Description

Curates Cottage is a delightful and thoughtfully extended character cottage located in an idyllic rural location at the heart of the picturesque and highly regarded Wiltshire village of Bremhill. The property is situated in the heart of the village and optimises its elevated position enjoying panoramic views over open countryside; whilst sitting in generous grounds to include a charming front garden and ample driveway parking leading on to the car port/garage it fit four vehicles. Internally the accommodation is light and spacious through out which comprises of entrance porch, entrance hall, living room, kitchen, cloakroom, dining room, family room, inner hall, shower room, family bathroom and utility room. Upstairs, to the first floor, there are four double bedrooms with en-suite bathroom to master bedroom, shower cubicle and wash hand basin to bedroom two and en-suite w.c to bedroom three.

Situation

The cottage sits betwixt the villages of Bremhill & East Tytherton at the start of the famous Maud Heath's causeway. The towns of Calne and Chippenham are close by with the latter of which offers mainline railway station (London-Paddington). Both towns offer a range of comprehensive amenities to include shops and schooling. The village itself has a church and a public house.

Directions

Leave Chippenham on the A4 London Road towards Calne. Turn left into Stanley Lane, past Abbeyfield School and continue along this lane and over the hump back bridges. Take the next left. Continue along the lane, around the sharp right hand bend at Tytherton Lucas to the next 'T' junction. Turn right continue through East Tytherton and at the centre of the village, 'T' junction, turn right sign posted Bremhill & Calne. Continue along the lane, passing the church on your right hand side, and Curates Cottage will be seen as sign posted on your left hand side.

Services & Council Tax

Council Tax Band E
Freehold Property



These particulars, whilst believed to be accurate are set out as a general outline only for guidance and do not constitute any part of an offer or contract. Intending purchasers should not rely on them as statements of representations of fact, but must satisfy themselves by inspection or otherwise as to their accuracy. No person in this firm's employment has the authority to make or give any representation or warranty in respect of the property. All measurements and distances are approximate only.

Your home is at risk if you do not keep up repayments on a mortgage or other loan secured on it.

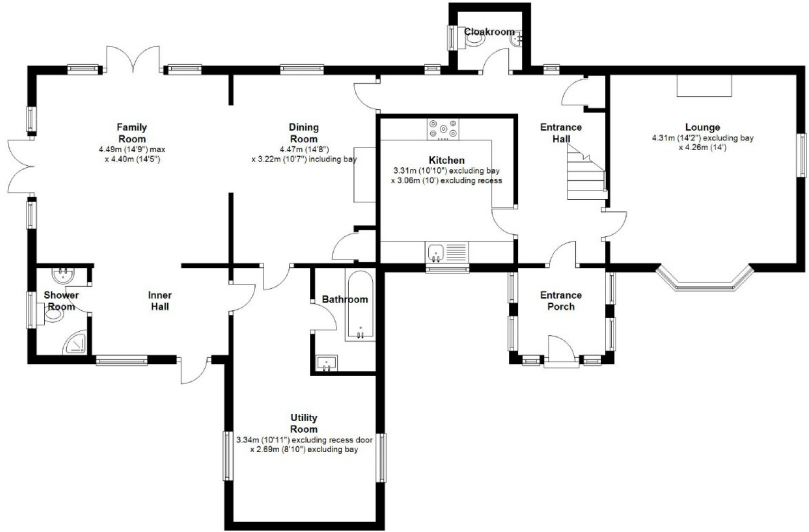




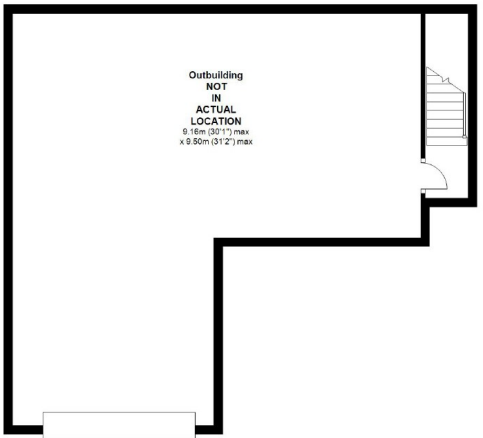
33 / 34 Market Place, Chippenham, Wiltshire,
 SN15 3HP
 Tel: 01249 652717
 Fax: 01249 654100
 Email: chippenham@strakers.co.uk

strakers.co.uk

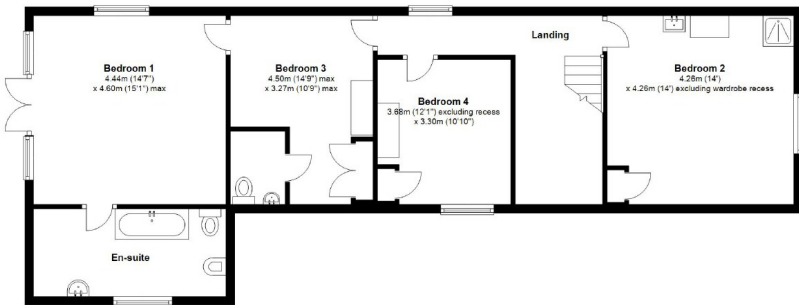
Ground Floor



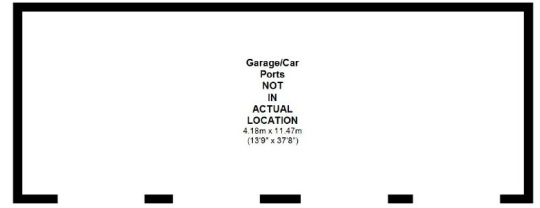
Third Floor



First Floor



Ground Floor



■ Chippenham
 ■ Corsham

■ Marlborough
 ■ Malmesbury

■ Royal Wootton Bassett
 ■ Devizes

■ Swindon
 ■ North Swindon