



**Cross Deep
Twickenham**

£2,250,000

chasebuchanan.london



Key features

- Georgian style semi-detached
- Three/Four reception rooms
- Four bedrooms
- Three bathrooms
- Large rear garden & roof terrace
- Off street parking & garage
- Circa 2242 square feet
- Direct river views from all principal rooms
- Boat mooring
- EPC Rating D

Description

Located on an Arcadian stretch of the River Thames immortalised by Tilleman in his portrait of Twickenham's riverbank in 1724.

This mock-Georgian house constructed in 1988 stands in the corner of what was an undisturbed meadow until the last quarter of the eighteenth century. In the 1770's the meadow's owner, George Shirley, found himself in dispute with the occupier of Crossdeep Lodge on the far side of the road, who enjoyed a magnificent view of the river across the meadow. Whatever the nature of the dispute, Shirley decided to punish his neighbour by removing the view. Shirley built his house up against one corner of the meadow, as close as possible to Cross Deep in order to achieve his objective. Horace Walpole, a quarter of a mile away at Strawberry Hill, wrote to a friend:

"The people here have christened Mr Shirley's new house Spite Hall... as ill natured an act as possible".

The epithet did not stick and the house, in its rebuilt state, is now known as Riversdale.

Boat Mooring (by means of shared pontoon with the adjoining property) please note there is a small fee associated with the mooring, this is payable quarterly in advance to the Port of London Authority (approx £103 per quarter).

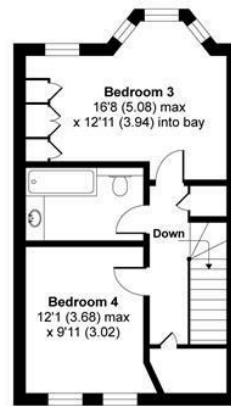




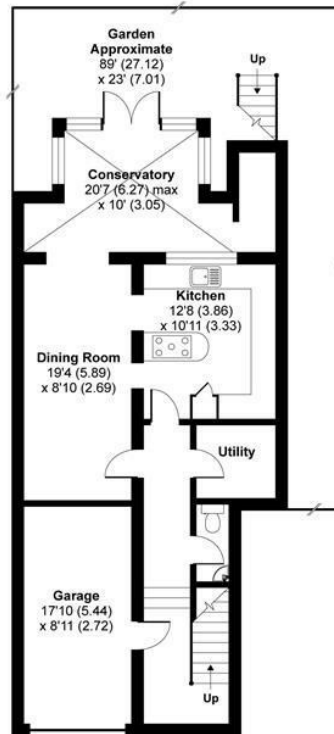
APPROX. GROSS INTERNAL FLOOR AREA 2327 SQ FT 216.1 SQ METRES



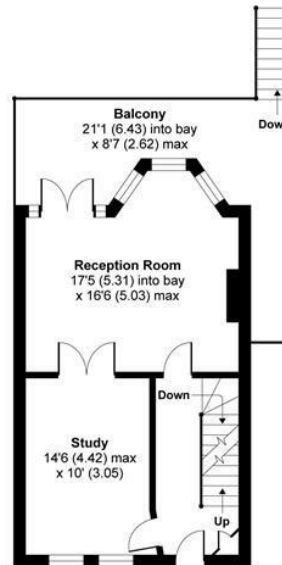
FIRST FLOOR



SECOND FLOOR



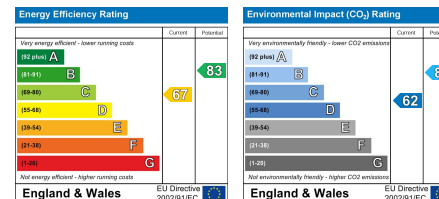
LOWER GROUND FLOOR



GROUND FLOOR

Copyright nichecom.co.uk 2018 Produced for Chase Buchanan REF : 239187

Care has been taken in the preparation of these particulars, however, their accuracy is not guaranteed and they do not form part of any contract. Measurements stated must be considered maximum.



For more information or to book a viewing, please contact:

020 8744 0101

twickenham@chasebuchanan.london

4 York Street, Twickenham, TW1 3LD



**Chase
Buchanan**

Our community, your home

chasebuchanan.london