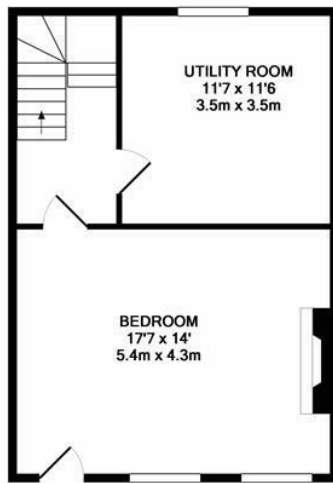


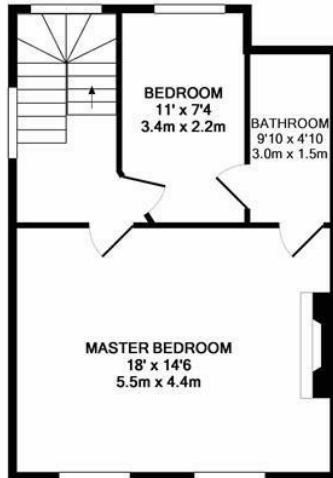
**Riverside
Twickenham
TW1 3DS**

£1,850,000

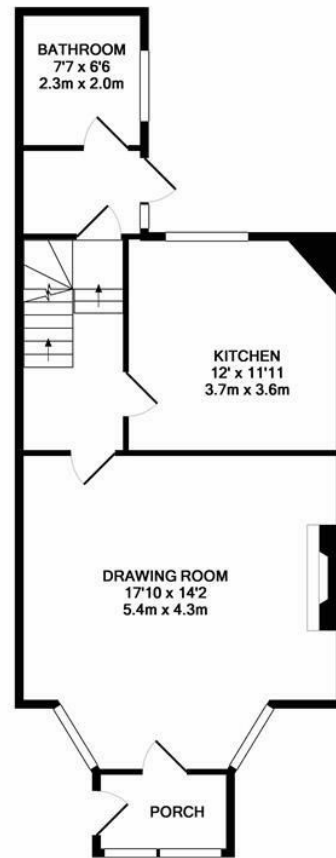




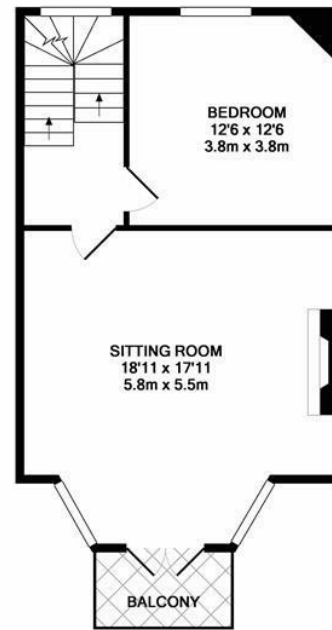
LOWER GROUND FLOOR
APPROX. FLOOR
AREA 467 SQ.FT.
(43.4 SQ.M.)



2ND FLOOR
APPROX. FLOOR
AREA 457 SQ.FT.
(42.5 SQ.M.)



RAISED GROUND FLOOR
APPROX. FLOOR
AREA 622 SQ.FT.
(57.8 SQ.M.)



1ST FLOOR
APPROX. FLOOR
AREA 502 SQ.FT.
(46.7 SQ.M.)

TOTAL APPROX. FLOOR AREA 2049 SQ.FT. (190.4 SQ.M.)
Made with Metropix ©2017

- Historic Twickenham
- Four storey home
- Riverside garden
- Adaptable accommodation
- Fantastic opportunity
- River views from most rooms
- Updating required
- EPC Rating - F

For more information or to book a viewing, please contact:

020 8744 0101

twickenham@chasebuchanan.london
4 York Street, Twickenham, TW1 3LD



**Chase
Buchanan**

Our community, your home

chasebuchanan.london

Care has been taken in the preparation of these particulars, however, their accuracy is not guaranteed and they do not form part of any contract. Measurements stated must be considered maximum.

Energy Efficiency Rating		Current	Potential	Environmental Impact (CO ₂) Rating		Current	Potential
Very energy efficient - lower running costs				Very environmentally friendly - lower CO ₂ emissions			
102-110	A			102-110	A		
81-101	B			81-101	B		
61-80	C			61-80	C		
41-60	D			41-60	D		
21-40	E			21-40	E		
1-20	F			1-20	F		
0	G			0	G		
Not energy efficient - higher running costs				Not environmentally friendly - higher CO ₂ emissions			
England & Wales		EU Directive 2002/91/EC	71	England & Wales		EU Directive 2002/91/EC	33