




YOUR MOVE
Petty Freeman

WWW.YOUR-MOVE.CO.UK

Ringwood The Green, Sidcup, Kent

£950,000

Ringwood The Green, Sidcup, Kent

£950,000

EPC RATING E

ENTRANCE PORCH

Double-glazed door to front, tiled flooring

RECEPTION HALL

Original stained glass window and part glazed door to front, parquet flooring, understairs cupboard, double radiator

LOUNGE

Double-glazed bay window to front, coved ceiling, living flame gas fire (not tested), two radiators, oak strip flooring

DINING ROOM

Double-glazed window to side, ornamental fireplace, two radiators, solid ash flooring, french doors to family room

FAMILY ROOM

Double-glazed patio doors to garden, solid ash strip flooring, two radiators

KITCHEN/DINER

Double-glazed window to rear, door to garden, quality wall and base units, integral dishwasher, hob, fan extractor and double oven, worksurfaces with sink inset, pull out larder cupboard, radiator

UTILITY

Wall and base units, plumbed for washing machine, worksurfaces with sink inset, door to wc

GROUND FLOOR WC

Opaque double-glazed windows to rear, low flush wc, vanity unit with sink inset, part tiled walls,

SEVENTH BEDROOM/STUDY

Double-glazed patio doors to rear patio, radiator, strip flooring

LANDING

Stained double-glazed glass windows, storage cupboard

BEDROOM ONE

Double-glazed bay window to front, coved ceiling, picture rail, built-in wardrobes, alcove with built-in storage, fitted carpet

BEDROOM TWO

Double-glazed window to side and rear, radiator, ornamental cast iron fireplace, double radiator, fitted wardrobe, fitted carpet

BEDROOM THREE

Double-glazed window to rear, storage cupboard, walk-in wardrobe with cylinder, potential for shower (subject to planning), double radiator, fitted carpet

BEDROOM FOUR

Double-glazed door to balcony overlooking The Green, ornamental fireplace, double radiator, fitted carpet

BATHROOM

Double-glazed opaque windows to side, panel bath with shower, pedestal sink, low flush wc, radiator, fully tiled

SECOND FLOOR LANDING

BEDROOM FIVE

Two double-glazed skylights, access to eaves storage

BEDROOM SIX

Double-glazed skylight, carpet tiles, electric heater, eaves storage

FRONT GARDEN

REAR GARDEN

Approx 85 ft patio area, rear access, mainly laid to lawn, well stocked with shrubs.

DOUBLE GARAGE

Power and light, electric roller door, detached with rear access

PARKING TO REAR

In front of garage

VIEWS

FLOORPLAN 1

FLOORPLAN 2

Ringwood The Green, Sidcup, Kent

£950,000

DIMENSIONS

Lounge
4.98m x 4.90m (16'4" x 16'1")

Dining Room
4.60m x 3.81m (15'1" x 12'6")

Family Room
5.92m x 3.43m (19'5" x 11'3")

Kitchen/Diner
4.67m x 4.11m (15'4" x 13'6")

Seventh Bedroom/Study
5.26m x 2.06m (17'3" x 6'9")

Bedroom One
4.95m x 0.00m (16'3" x 0'0")

Bedroom Two
4.50m x 3.78m (14'9" x 12'5")

Bedroom Three
3.45m x 3.40m (11'4" x 11'2")

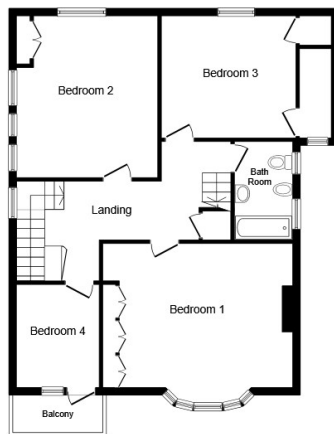
Bedroom Four
2.90m x 2.36m (9'6" x 7'9")

Bedroom Six
3.81m x 2.87m (12'6" x 9'5")

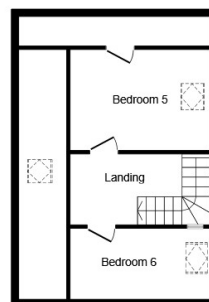




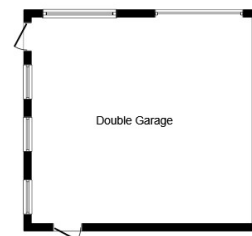
Ground Floor



First Floor



Second Floor



Double Garage

This plan is for illustration purposes only and may not be representative of the property. Plan not to scale.

Powered by audioagent.com

Your Move Petty Freeman is the trading name of Petty Freeman Estates Limited, registered company number 5250647, registered office 1 Elm Parade Main Road Sidcup DA14 6NF . Your Move Petty Freeman is an independently owned and operated business, operated under licence from your-move.co.uk Limited

IMPORTANT NOTE TO PURCHASERS: We endeavour to make our sales particulars accurate and reliable, however, they do not constitute or form part of an offer or any contract and none is to be relied upon as statements of representation or fact. The services, systems and appliances listed in this specification have not been tested by us and no guarantee as to their operating ability or efficiency is given. All measurements have been taken as guide to prospective buyers only, and are not precise. Floor plans where included are not to scale and accuracy is not guaranteed. If you require clarification or further information on any points, please contact us, especially if you are travelling some distance to view. Fixtures and fittings other than those mentioned are to be agreed with the seller.

*Source: Hitwise Nov 2011.

**Calls may be recorded and/or monitored for training and/or security purposes.



1 Elm Parade Main Road, Sidcup, Kent, DA14 6NF
tel: 0208 302 7711 **
email: Sidcup@your-move.co.uk
www.your-move.co.uk - The UK's most visited estate agency website*

