



W

westways



Cedar House, Essendon Place, Hertfordshire

£2,500,000 | Freehold



Property features

- 5 double bedrooms
- 3 reception rooms
- 4 bathrooms 3 ensuite
- Dining kitchen
- Private gated development
- Double garage
- 5108 square feet
- EPC Rating C

Summary

Stunning 5 bedroom country house for sale in Essendon, Hertfordshire. This beautiful, modern 2 storey house, built in 2003 is situated within a private gated development in greenbelt countryside on the edge of the quiet village of Essendon. The house is set within its own grounds with a front garden, 400 sq. ft. double garage and driveway as well as an extremely large rear garden with stunning uninterrupted views across the open countryside.

The living accommodation comprises a master bedroom with a balcony, walk through wardrobe and large ensuite bathroom; 4 further family bedrooms, 2 of which are ensuite; 2 reception rooms; dining room; large double kitchen with a dining area; guest bathroom and cloakroom. EPC Rating C.

Tenure | Freehold

Gross internal area | 5108 sq. ft.

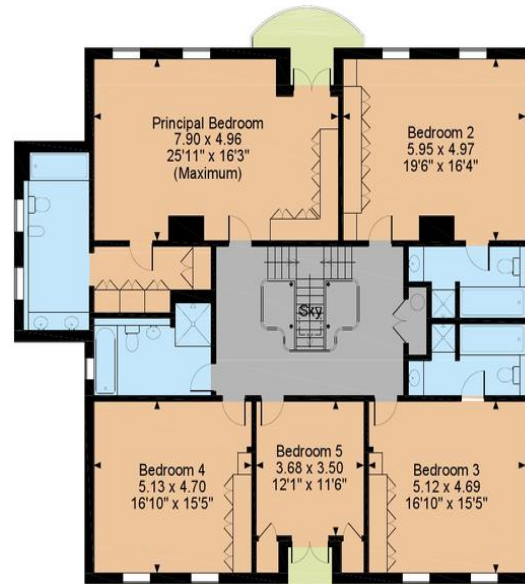
Local authority | Welwyn Hatfield District Council



Cedar House, Essendon Place, Essendon, Hatfield
 Main House internal area 4,709 sq ft (437 sq m)
 Garage internal area 399 sq ft (37 sq m)
 Total internal area 5,108 sq ft (474 sq m)



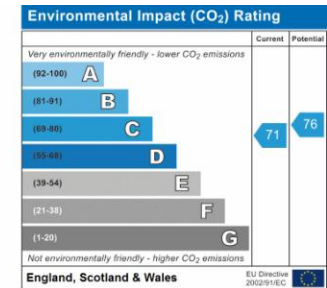
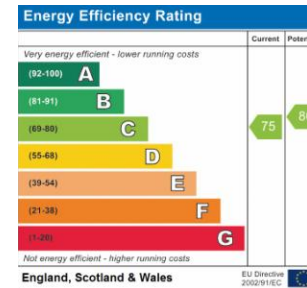
Ground Floor



First Floor

FOR ILLUSTRATIVE PURPOSES ONLY - NOT TO SCALE

The position & size of doors, windows, appliances and other features are approximate only.
 © ehouse. Unauthorised reproduction prohibited. Drawing ref. dig/8228929/PJS



tel
web
email
post

020 7286 5757
 westways.co.uk
 sales@westways.co.uk
 20 Great Western Road, London W9 3NN

In accordance with the 1993 Misdescriptions Act: The agent has not tested any apparatus, equipment, fixtures, fittings or services and so cannot verify they are in working order. Neither has the Agent checked the legal documents to verify the Leasehold/Freehold status of the property. The buyer is advised to obtain verification from their solicitor or surveyor. Also photographs are for illustration only and may depict items which are not for sale or included in the sale of the property. All sizes are approximate.