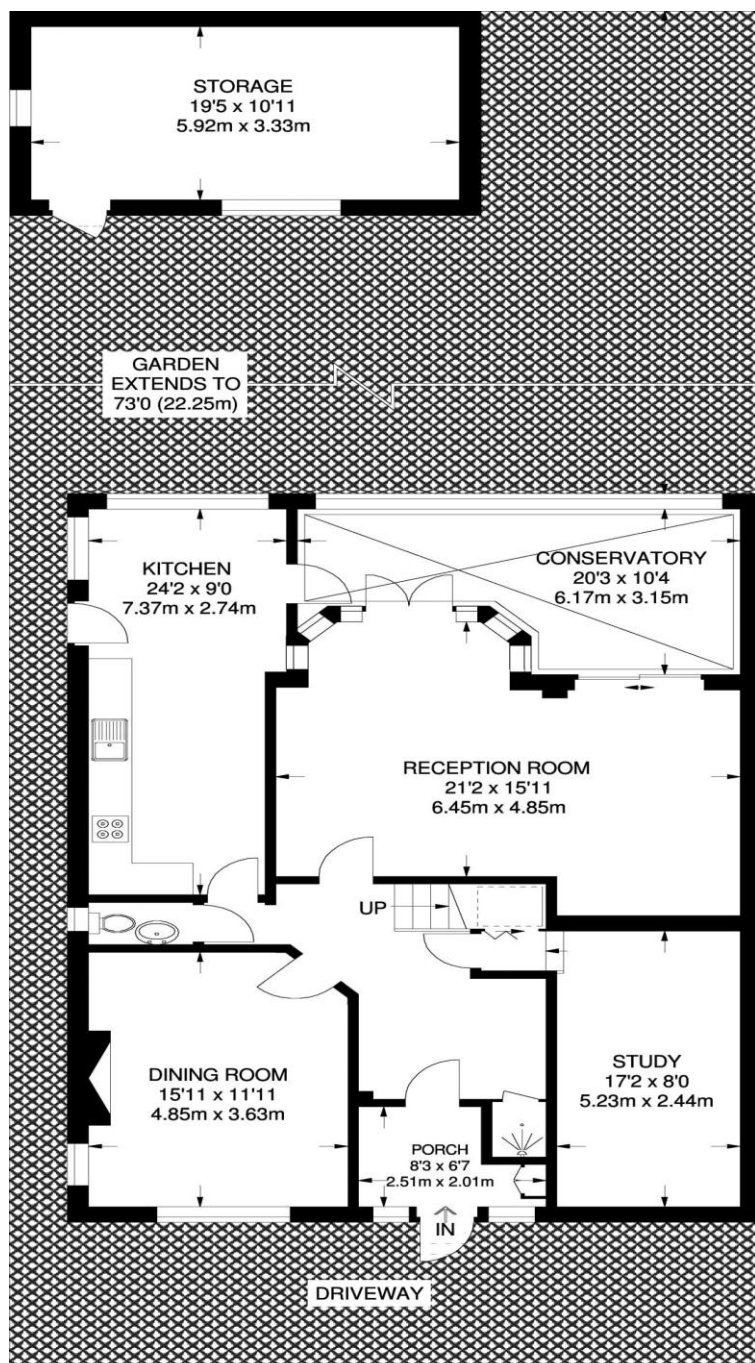
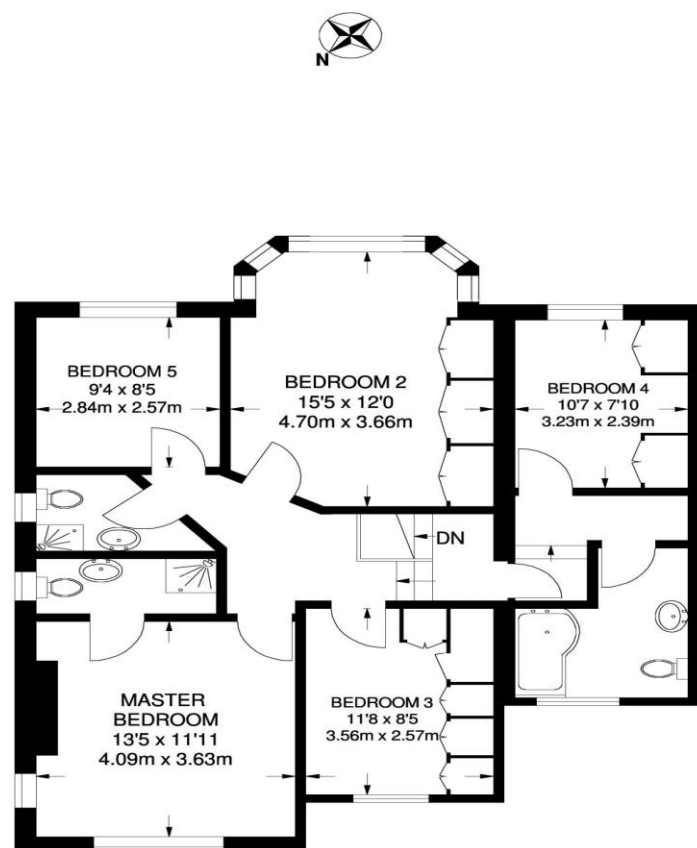


# the floorplan...



**GROUND FLOOR**  
(EXCLUDING REDUCED BEDROOM & STORAGE)  
1291 SQ FT / 119.9 SQ M



**FIRST FLOOR**  
897 SQ FT / 83.4 SQ M

**APPROXIMATE GROSS INTERNAL AREA**  
2188 SQ FT / 203.3 SQ M

## more details from...

**call:** Brian Cox Sudbury: 0208 422 1007

**email:** [steve.pusey@brian-cox.co.uk](mailto:steve.pusey@brian-cox.co.uk)

**web:** [www.brian-cox.co.uk](http://www.brian-cox.co.uk)



0208 422 1007  
[brian-cox.co.uk](http://brian-cox.co.uk)



Offered to the market with no further chain is this spacious FIVE bedroom, three receptions and three bathroom family home. Internally to the ground floor you will find a spacious living area with a lounge, dining room, study, large kitchen/breakfast room and conservatory. To the first floor you will find all five bedrooms and three bathrooms. All in all this property is ready for a family to add their own stamp too and not to be missed.



£1,100,000  
Freehold

Sudbury Court Drive, Harrow HA1 3TD

Consumer Protection from Unfair Trading Regulations 2008 We have not tested any apparatus, equipment, fixtures, fittings or services and so cannot verify that they are in working order or fit for purpose. You are advised to obtain verification from your solicitor or surveyor. References to the tenure of a property are based on information supplied by the seller. We have not had sight of the title documents and a buyer is advised to obtain verification from their solicitor. Items shown in photographs are not included unless specifically mentioned within the sales particulars, but may be available by separate negotiation. We advise you to book an appointment to view before embarking on any journey to see a property, and check its availability.





## in brief...

- Detached
- No Chain
- Spacious
- Ample Parking
- Three Receptions
- Five Bedrooms



## the location...

### nearest stations ...

Sudbury Hill Harrow (0.4 miles)  
Sudbury Hill (0.5 miles)  
Sudbury & Harrow Road (0.8 miles)

Harrow is a large suburban town in the London Borough of Harrow, North West London, England. It is centred 10.5 miles (16.9 km) North West of Charing Cross.

Harrow has two large shopping centres which are St Anns and St Georges with its many large department stores, restaurants, cafes and cinema.

There are many local schools within close proximity of the property some of these include Byron Court Primary School, St George's Primary School, Wembley High Technology College, St Anselm's Catholic Primary School and John Lyon School.