



Parkland Gardens | Wimbledon Common | London  
**Offers in Excess Of £900,000**







Parkland Gardens, Wimbledon  
Common, London

## **Offers in Excess Of £900,000 Freehold**

Goodfellows is proud to present this delightful three bedroom town house which is situated in a quiet and private development and only a stone's throw from Wimbledon Common and is within walking distance of Southfields underground station and a short bus ride to central Putney. This property benefits from off street parking which is provided by a fully functional garage....

### **Entrance Hall**

Stone tiled flooring with ample understairs storage space and plenty of light provided by the west facing window.

### **Kitchen**

Modern well appointed kitchen west facing window with plenty of under counter and eye level cupboards, space for washing machine, gas hob and integrated oven and Neff dishwasher, double doors leading to:-

### **Dining Room**

A bright and spacious dining room with sliding doors leading on to the charming garden.

### **Utility Room**

Access from hallway, space for washing machine and home to a Worcester boiler.

### **Downstairs W.C.**

North east facing window complete with W.C. wash hand basin and radiator.

### **Garage**

Access from front porch and rear garden equipped with full electrics and plenty of storage space.

### **First Floor Landing**

South facing window and radiator.

### **Lounge**

Spacious double aspect living room with two Juliette balconies overlooking front porch and rear garden.

### **Bedroom One**

Double aspect light and spacious room leading onto en-suite.

### **Ensuite**

En-suite complete with double shower, heated towel rail, W.C., washbasin, two mirrored cabinets providing ample storage and east facing window.

### **Second Floor Landing**

Access to loft hatch.

### **Bedroom Two**

Double aspect large bedroom with radiator and fitted cupboards.

### **Bedroom Three**

Another spacious double aspect room with radiator and fitted wardrobes with sliding doors.

### **Family Bathroom**

Modern tiled bathroom complete with full size bath with shower attachment, wash hand basin, W.C., heated towel rail and east facing window.







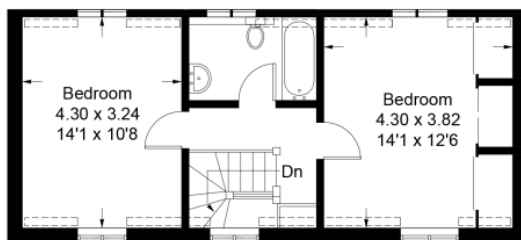
### **Garden**


Thoughtfully designed garden surrounded by a large variety of trees and rose bushes which provides seclusion, double access from dining room and garage.



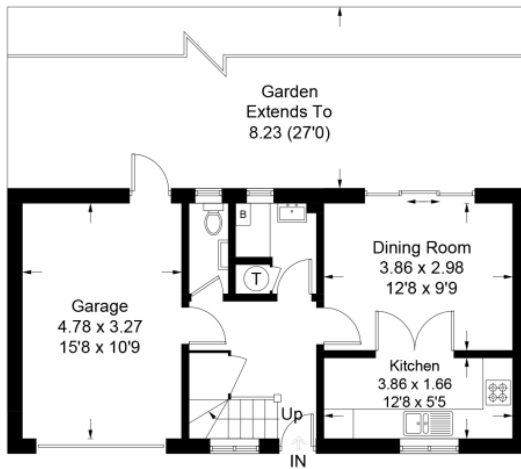
## 12 Parkland Gardens

Approximate Gross Internal Area = 140.5 sq m / 1512 sq ft  
(Including Garage)

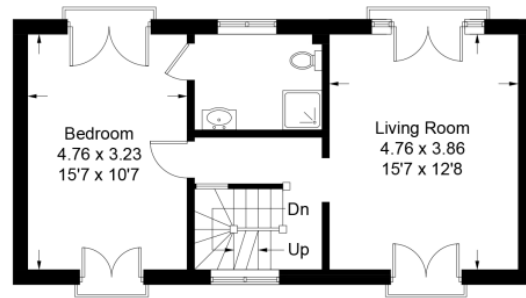


 = Reduced headroom below 1.5m / 5'0"

**Second Floor**



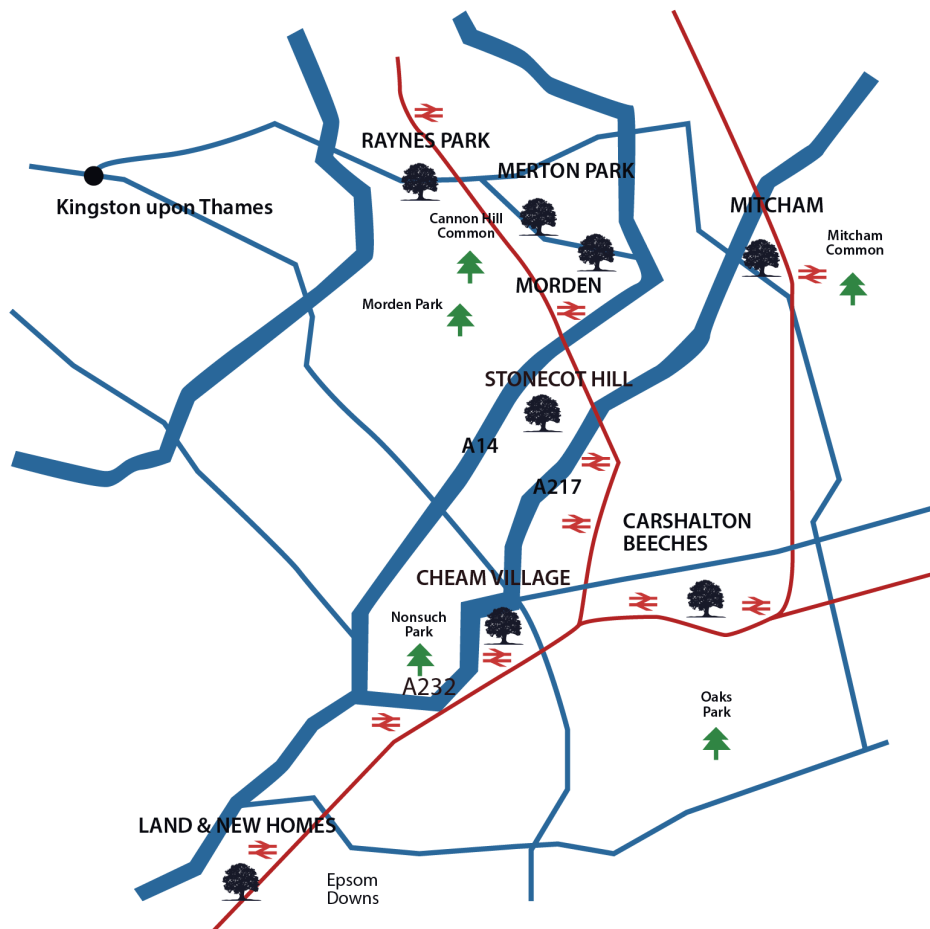
**Ground Floor**



**First Floor**

Illustration for identification purposes only, measurements are approximate,  
not to scale. floorplansUsketch.com © (ID426705)

# Goodfellows Branch Network



**Local Authority**

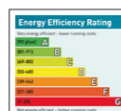
**Agents Notes**

## RESIDENTIAL SALES

44 Coombe Lane, London, SW20 0LA

T 0208 946 6511

raynespark@goodfellows.co.uk www.goodfellows.co.uk



For full EPC please contact the branch