



Somerset Road | Wimbledon | London
£975,000





Somerset Road, Wimbledon,
London

£975,000 Leasehold

Situated in one of London premier roads. Goodfellows are proud to present this spacious three bedroom lift serviced apartment spreading across 134 m2 of internal space with large west facing private balcony and secure underground parking for two cars. Further benefits include three double bedrooms (master with en-suite), eat-in kitchen/ breakfast room with separate utility room and double glazed conservatory. EPC - C.



Entrance Hall

Wood floors, video entry phone system, built-in coat cupboards and doors leading to:-

Lounge

The wood floors continue into the spacious reception room complete with feature fireplace and stone mantle, double radiator, spot lights and door leading to conservatory.

Conservatory

Double glazed conservatory with views stretching over Wimbledon Common currently used as a dining room.

Kitchen/Breakfast Room

A spacious and well appointed kitchen/ breakfast room with stone work surface,

inset stainless steel sink with mixer tap, inset Neff induction hob with Neff extractor above, built-in fridge/freezer and dish washer, built-in wine fridge, range of under counter cupboards, central island providing a perfect breakfast space, double glazed window to rear aspect and door leading to utility room.

Utility Room

Space and plumbing for washing machine and tumble dryer stack.





Bedroom One

The wood floors continue into this spacious master suite with built-in wardrobes, dressing table, double glazed door leading to balcony and door leading to ensuite.

En Suite

Luxury appointed en-suite bathroom comprising part tiled walls, spa bath with chrome mixer tap, glass shower screen and separate shower, W.,C. with built-in cistern. bidet with chrome fittings and hand basin with storage.





Bedroom Two

The wood floors continue into this spacious double bedroom with double glazed window to rear aspect with radiator below and built-in wardrobes.



Bedroom Three

Originally part of the reception room this has been closed off to create a third bedroom. The wood floors continue, wall mounted radiator and door leading to terrace.

Family Bathroom

Part tiled bathroom with tiled enclosed bath, chrome mixer tap with shower attachment and shower screen, wall mounted hand basin, mirror and wall mounted W.C.





Separate WC

Part tiled with wall mounted W.C. and enclosed cistern, wall mounted hand basin with shelf and mirror.

Terrace

A large west facing seldom found private terrace with views stretching over the open

spaces of Wimbledon Common providing excellent space for al fresco dining.

Underground Parking

Two parking spaces accessed via underground lift with electric security gate on somerset road.

- RESIDENTIAL SALES
- RESIDENTIAL LETTINGS
- PROPERTY MANAGEMENT
- FINANCIAL SERVICES
- LAND AND NEW HOMES
- CONVEYANCING

Your View...

1 FF 5, 1 Somerset Road

Approximate Gross Internal Area = 144.6 sq m / 1556 sq ft

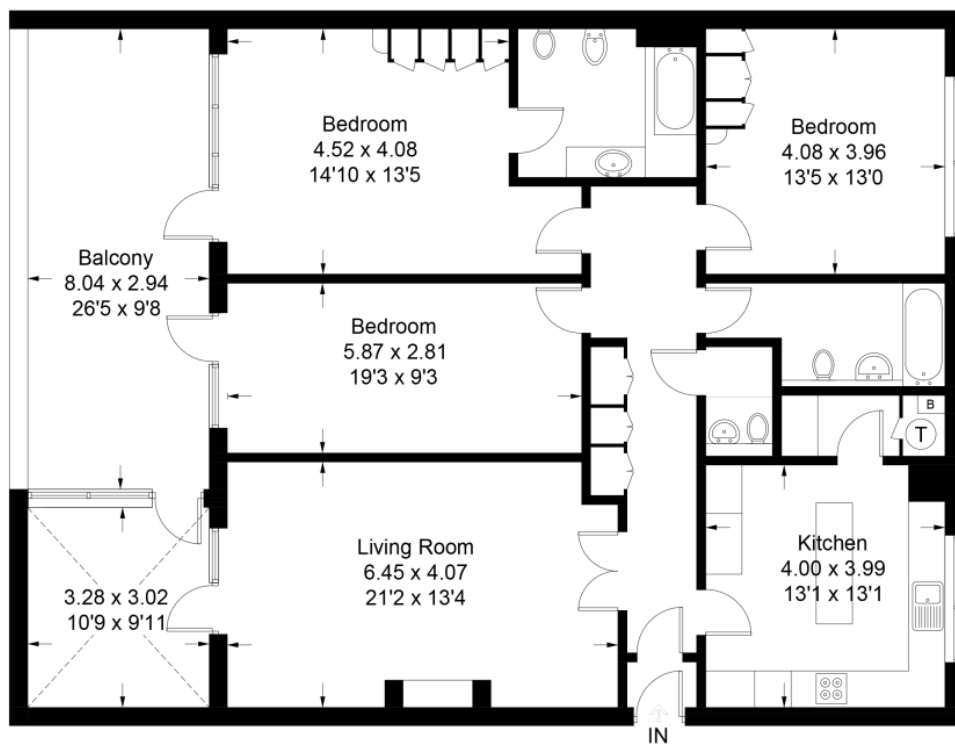


Illustration for identification purposes only, measurements are approximate,
not to scale. floorplansUsketch.com © (ID423006)

Goodfellows Branch Network



Local Authority

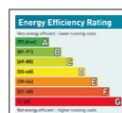
Agents Notes

RESIDENTIAL SALES

44 Coombe Lane, London, SW20 0LA

T 0208 946 6511

raynespark@goodfellows.co.uk www.goodfellows.co.uk



For full EPC please contact the branch