

Oakhurst Gardens, Bexleyheath, DA7 5JP



- Stunning Semi Detached House
- Extended and Remodelled
- Open Plan Living with High End Kitchen
- 4 Bedrooms and 2 Bathrooms
- Bi Fold Doors
- Contemporary Outdoor Bar
- Hot Tub
- Popular Cul De Sac





Located in a **POPULAR RESIDENTIAL AREA** known as **THE PANTILES** and within a **SMALL CUL DE SAC** is this **STUNNING SEMI DETACHED HOUSE** which has been **EXTENDED** and **REMODELLED**. The **MAIN RECEPTION** is **OPEN PLAN** to **DINING AREA** and **HIGH END KITCHEN** with **BI FOLD DOORS** providing **AL FRESCO** in **SECONDS**, once outside the **LARGE DECKED AREA** is utilised with a **CONTEMPORARY OUTSIDE BAR** and **LARGE HOT TUB**.

The rest of the accommodation includes **4 BEDROOMS** and **2 BATHROOMS** and the property is presented in **NICE CONDITION** with a **CONTEMPORARY FINISH THROUGHOUT**. **BEXLEYHEATH MAINLINE STATION** and **VIBRANT TOWN CENTRE** are close at hand with a **HOST** of **GREAT BEXLEY SCHOOLS** also nearby.

To the front of the property is a **PRIVATE DRIVEWAY** and the owners have also created a **LARGE EXTRA SPACE** at the rear of the garden currently used as a **GYM**.



Entrance Porch

Entrance Hall 14' 3" x 7' 7" (4.35m x 2.31m)

Wood flooring.

Bedroom 4 12' 3" x 6' 10" (3.74m x 2.08m)

Double glazed window to front, Oak flooring, radiator.

Dining Room 14' 0" x 12' 0" (4.26m x 3.65m)

Double glazed window to front, Oak flooring, radiator, coving.

Lounge 12' 0" x 11' 10" (3.65m x 3.60m)

Wall hung electric fire, radiator, tiled floor, open plan to dining room.

Breakfast Room Area

Bi fold doors to the outside, tiled floor, open plan to kitchen.

Kitchen/Breakfast Room 20' 3" x 9' 1" (6.17m x 2.77m)

Featuring large breakfast Island, wall, and base units with sink and mixer taps, integrated dish washer, built in double oven, induction hob, cupboard housing Vaillant combi boiler, integrated full height fridge and full height freezer, breakfast cupboard featuring integrated coffee machine, Corian work surface.

Stairs to First Floor

Double glazed window to side.

Bedroom 1 14' 0" x 12' 0" (4.26m x 3.67m)

Leaded light window to front, Column radiator, laminate flooring.

Bedroom 2 12' 0" x 11' 11" (3.67m x 3.64m)

Double glazed window to rear, radiator, laminate flooring, spotlights.

Bedroom 3 9' 7" x 8' 0" (2.91m x 2.43m)

Leaded light double glazed window, radiator, carpet.

Bathroom/w.c 9' 4" x 8' 0" (2.85m x 2.43m)

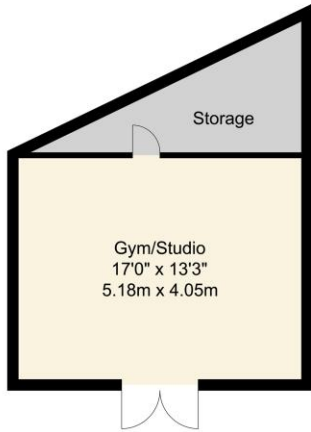
Frosted double glazed window, bath with Travertine tiled surround, taps and shower attachment, wash hand basin set in vanity unit, double shower, low level w.c, Chrome heated towel rail, tiled walls and tiled floors.

Rear Garden

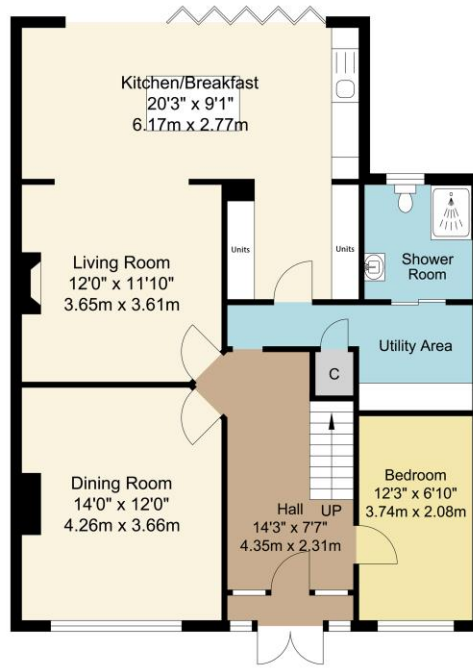
Contemporary Bar area, hot tub, large decked area with attractive brick wall and step down to lawned area.

Large Out House 17' 0" x 13' 3" (5.18m x 4.04m)

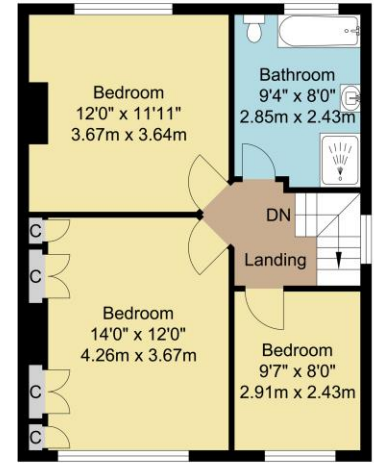
With double glazed doors, light and power, spotlights, currently used as a gym



Gym/Studio
Approximate Floor Area
295.46 SQ.FT.
(27.45 SQ.M.)



Ground Floor
Approximate Floor Area
898.35 SQ.FT.
(83.46 SQ.M.)



First Floor
Approximate Floor Area
520.65 SQ.FT.
(48.37 SQ.M.)

TOTAL APPROX FLOOR AREA 1714.47 SQ.FT. (159.28 SQ. M.)

For Identification Purposes Only.
© 2017 Trueplan (UK) Limited (01892) 614 881





New Eltham

020 8859 4000

405 Footscray Road, New Eltham, SE9 3UL

sales.neweltham@chattertons.org.uk

Chattertons
Est 1893

All dimensions are approximate and are quoted for guidance only, their accuracy cannot be confirmed. Reference to appliances and/or services does not imply they are necessarily in working order or fit for the purpose. Buyers are advised to obtain verification from their solicitors as to the freehold/leasehold status of the property, the position regarding any fixtures and fittings and where the property has been extended / converted as to Planning approval and Building Regulation compliance. These particulars do not constitute or form part of an offer or contract, nor may they be regarded as representations. All interested parties must themselves verify their accuracy. Where a room layout is included this is for general guidance only, it is not to scale and its accuracy cannot be confirmed.
00001652