

Wildcrest by Hamill Homes



Hamill Homes are delighted to have been commissioned as the builder for the design and build of this unique private client development.

Enjoying an excellent relationship with NHBC, the leading warranty supplier and standards settler in the UK, Hamill Homes is also able to ensure that our customer service is best in class. We are delighted to be able to assure each client that they will receive a comprehensive personal service from one of our Directors, the model for which has been developed and pioneered by us in partnership with NHBC.

Developing exquisite homes for discerning lifestyles.

Statements contained within this brochure are believed to be correct at the time of publication. Furnishings shown are not included in the sale of the property. This brochure does not form any part of any contract and every effort has been made to ensure that the information contained within this brochure is correct.

Wildcrest

Hamill Homes have combined creative traditional design with modern appliances and technology, combining a luxury aesthetic with the practicality and reliability required for high-end living. Examples of this can be seen throughout the house. The liveable space has been maximised, whilst ensuring plentiful storage facilities. The kitchen's appearance is in-keeping with the luxury finishes throughout the house, but performs with all the practicality & functionality of a gourmet restaurant. The technology is highly functional for today's capability, while being future proofed for advances in the years to come.

Binding

Binding



Achieving a home which is both beautiful in appearance, and functional in everyday life for years to come is the bedrock of Hamill Homes. In setting out such a vision, Hamill Homes have chosen to work with some of the best and brightest designers in the business. Please read on to hear their perspective.





Wildcrest is an example of Ascot Design's determination and professionalism in negotiating with the Local Authority to maximise planning potential and achieve a building of the finest proportions.

The client required generous accommodation, so we gave considerable thought to the design of the internal layout to offer the distinction of executive living with the balance and functionality of a practical family home. The spacious entrance hall and magnificent semicircular staircase cannot fail to impress, whilst the kitchen, breakfast and family area have been combined into one outstanding room with views to the garden. The master bedroom is a substantial 1250 sq. ft. and all the other bedrooms incorporate dressing rooms and en-suite facilities.

Binding

Binding



Ascot Design was pleased to have acted for Hamill Homes on this outstanding project, which resulted in a truly magnificent home.

Warren Joseph,
Managing Director

The Alexander James Group of Companies is an award winning design practice providing interior design, architectural design and furnishing solutions to clients around the world.

With expansive knowledge of the Berkshire and Surrey property markets, we place huge emphasis on understanding the purchaser profile for each project, so that our designs help the potential buyer to visualise their life in the property. Hamill Homes' vision for Wildcrest is that it should be a contemporary, comfortable and welcoming family home. The family could be local to the area or relocating from any global city, for a more suburban lifestyle. Therefore, the interior design scheme had to be luxurious, stylish and appropriate to the extremely desirable location of the property

To create the required homely feel we kept the colour palette deliberately neutral throughout, providing an elegant and timeless feel. This soft neutral palette has been accented by complementary tones of emerald green and chartreuse bringing personality and depth to the space, and also connecting the house to the large gardens that surround it. Furniture in dark wood with gold accents has been selected for its simple elegant lines, and contemporary edge. Wood has been incorporated into the design, rather than chrome and glass, because it gives a softer more natural look, in keeping with Hamill Homes' vision.

Elegance, style and comfort are at the heart of this scheme, and this is in evidence not only through the furniture but also the accessories, which include bespoke artwork and objets d'art. The Alexander James Group has also designed and installed a handcrafted painted kitchen by Charles Yorke. A large island with an eating area forms the heart of this beautiful kitchen which also benefits from a comprehensive selection of appliances, including a Wolf range cooker.

Robert Walker,
Managing Director

Binding

Binding

Home Electronics & Media

Daniel Baker was handed a unique opportunity to carry out the full electrical and media installation, to fulfil an exceptional specification at Wildcrest, combining state of the art media, lighting and Secom security systems.

The RAKO lighting controls, system integration and app control presents technology for modern living and supplies mood lighting to all rooms. Wildcrest utilises the SONOS sound system; a wireless app connecting directly to different rooms sending a variety of music simultaneously through high performance ceiling-mounted speakers from Bowers and Wilkin.

The TV distribution consists of two satellite dishes to receive Sky/Free-sat UK and foreign satellite with multiple languages. All TV outlets are category 6 fibre optic cabled to enjoy viewing at the highest level of definition.

The brushed chrome outlets throughout this property concludes the premium finish. The specification at Wildcrest set the highest of standards, and these standards have been consistently achieved and surpassed.

Daniel Baker
Managing Director, BECS



Binding

Binding





Binding

Binding





The kitchen has been designed by Lida Cucina, an award-winning design house and part of the Alexander James International Group. The shaker style kitchen combines top of the range modern appliances with expertly crafted traditionally styled units and worktops. Integrating perfectly with natural light and space, the kitchen is aesthetically beautiful, while having the top end functionality and practicality of a gourmet restaurant.

Binding

Binding



The kitchen units come from internationally renowned brand Charles York, finished off with high quality quartz worktops and backsplashes.

Integrated appliances feature throughout, using the premier ranges from Wolf, Miele, Zip taps and Blanco sinks. These features and finishes are consistent throughout the Lida Cucina designed rooms, including the utility, pantry and bar on the top floor.





Binding

Binding

In conjunction with European Bathrooms, the bathrooms have been designed to the highest level of specification and are completely bespoke for Wildcrest.

They feature ceramic sanitary ware from Villeroy & Boch, and chrome fittings from Hans Grohe throughout. Stone composite baths and handmade one of a kind furniture combine wonderfully with exquisite tiling and subtle lighting. PIR systems are fitted to electric towel rails to ensure warmth and comfort, and to the lighting systems for ease of use and safety.





Binding

Binding



The 1,250 sq ft master suite spans the width of the first floor and is reminiscent of a five star hotel suite, with a living room, bedroom, feature dressing room and luxury bathroom. The balcony has lovely views over the large back garden. Finished with decorative stone and well executed tiling, as well as wrought iron balustrade and handrail, the balcony provides a beautiful finish to the impressive suite.



Binding

Binding

The staircase is a masterpiece and one of the most eye catching features of the house. Circling from ground floor to top floor, the concrete staircase is clad in thick high-quality quartz, finished with hand crafted and decorated wrought iron spindles and a polished walnut handrail. The staircase circles around pools of natural light coming in from a large skylight above.





Quality manicured turf and expansive planting compliment the mature trees and shrubs which surround the property beautifully, creating a highly desirable setting.

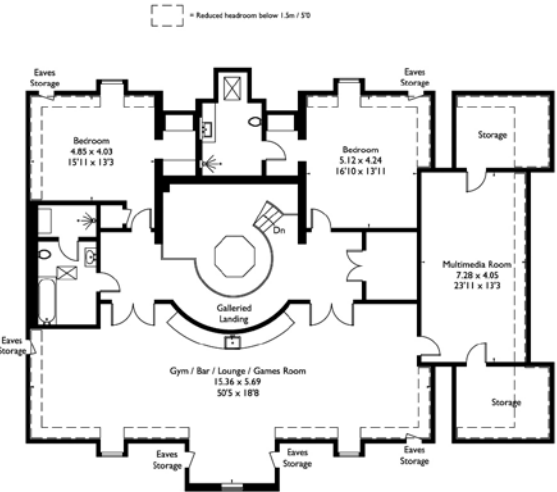
Ground floor plan showing the layout of the house, including the Dining Room, Drawing Room, Reception Hall, Morning Room, Kitchen / Breakfast / Family Room, Utility, Study, Clerk Room, and Garage. Dimensions are provided for each room.

- Dining Room: 7.85 x 5.19 (25'9" x 17'0")
- Drawing Room: 9.03 x 5.59 (29'0" x 18'4")
- Reception Hall: 11.40 x 5.17 (37'5" x 17'0")
- Morning Room: 5.33 x 5.31 (18'2" x 17'5")
- Kitchen / Breakfast / Family Room: 9.62 x 9.02 (31'7" x 29'7")
- Utility: 4.76 x 2.27 (15'7" x 9'2")
- Study: 5.59 x 3.46 (18'4" x 11'4")
- Clerk Room: 5.59 x 3.46 (18'4" x 11'4")
- Garage: 9.02 x 6.09 (29'7" x 20'0")

First Floor



Second Floor



Further Information

Flooring

Stunning porcelain tiling from Minoli is a fantastic feature throughout the house, creating a spectacular entrance hall and family room / kitchen, as well as completely bespoke and visually impressive bathrooms throughout.

Elegant wooden flooring has been used in the bar and gym, as well as on the ground floor office, while luxurious carpet serves the bedrooms and remaining reception rooms.

The solid concrete staircase is encased in thick quartz stone creating a stunning feature on every floor.

Fireplace

Gas fireplaces are fitted in both the formal lounge and master suite lounge areas, finished in marble downstairs, and as part of a spectacular TV and display unit in the master suite. The main fireplace is situated in line with a real functional chimney and could be converted to a solid fuel burning solution if desired.

Decoration and Finish

Large, layered and highly textured moulded cornice has been fitted throughout the house, designed to match the profile of the elegant skirtings and architrave. Coffered ceilings with discreet lighting compliment the design where appropriate for a finish that exudes quality.

Every bedroom has a walk-in wardrobe that has been designed and constructed exclusively for Wildcrest, while the Italian inspired master dressing room by Rossetto can only be described as truly spectacular.

Attention to detail and insistence on the highest standards of workmanship can clearly be seen in the paint finishes, with colour schemes and themes being selected in conjunction with Alexander James International

Core Detail

All 3 floors are constructed from solid concrete block and beam, with under floor heating throughout.

Electric Installation.

There has been a comprehensive, integrated, Rako lighting system installed throughout every room in the house, powering down lights, LED strips and feature pendants throughout. PIR systems are fitted to bathrooms, towel radiators and external lighting, all which link back to the Rako system. Satin chrome sockets are discreet and plentiful. This system is programmed for the individual tastes of the occupant at the onset, and can also be controlled either manually or remotely via an app.

Media and Communication

Utilisation of breaking edge technology and future proofing for new innovation is evident throughout the many features of the house. Running off Cat 6 cabling, TV and satellite data points are installed throughout, as are high quality speaker systems. The house also contains an integrated intruder alarm, fire alarm, CCTV and intercom system which allows fob and / or security code access for owners and guests alike.

This system is programmed for the individual tastes of the occupant at the onset, and can also be controlled either manually or remotely via an app. Wi-Fi access points are installed throughout to provide a seamless network covering all areas of the house.

Central Heating

Underfloor heating is installed throughout with multi zone thermostatic temperature control. The house is served by an externally accessed plant room housing Vailant boilers, oversized water tanks, water softener, and a booster pump to give the end user the optimum water pressure throughout the house. This system is programmed for the individual tastes of the occupant at the onset, and can also be controlled either manually or remotely via an app.

Garage

A triple garage with no restrictive piers is integrated with the main house, with an intricate tiled floor finish and an electric roller door.

Gates

Wrought iron electric gates set in brick piers and connected to the intercom and entry system provide both the grandeur and aesthetic required, as well as the security expected in such a substantial property.

Warranty

A 10-year Build Mark warranty is provided by NHBC.

Binding.

Binding.



Schools

Ascot is home to, and surrounded by, some of the finest private and state schools in the country.

Local private schools for boys include Eton College, Papplewick, Sunningdale, and Woodcote House.

For girls, nearby private schools include Heathfield (Church of England), St Georges (Christian), St Mary's (Catholic) and The Marist (Catholic).

Binding

Binding



Bishopsgate School

If you are looking for mixed private schools the options are LVS, ACS International, Hall Grove, Bishopsgate and Hurst Lodge.

Local Ofsted Outstanding schools include Charters, Cheapside (Church of England), Gordon's, Ranelagh (Church of England), St Francis (Catholic) and Windlesham Village.

For further information on these schools, their catchment areas and their admission process please contact the schools directly.



SL5



The SL5 postcode is considered one of the finest in the Home Counties, covering Ascot and some of its beautiful villages such as Sunningdale.

There are three local shopping areas in SL5 which combine a selection of well-known high street shops and some fantastic local independent businesses, restaurants and pubs.

There are also a number of surrounding towns with large shopping centres such as Windsor and Reading, with Westfield in London easily accessible from the M4.

Binding

Binding

Outdoors

Some of the finest, world renowned sporting facilities are in SL5, including Ascot Racecourse, The Berkshire Golf Club, Sunningdale Golf Club and Swinley Forest Golf Club. SL5 is also home to Coworth Park Hotel & Spa and The Berystede Hotel & Spa.



Foxhills Golf Club & Spa

Nearby facilities include the open spaces of Savill Garden and Windsor Great Park, the polo at Guards and The Royal Borough of Berkshire, and more golf at a number of other courses rated in the UK top 100, including Foxhills Golf Club & Spa, Queenwood, The Wisley, Wentworth, West Hill, Woking and Worplesdon.



The Best Connections in Town



Set in a beautiful suburban surroundings, Sunningdale benefits from superb local travel connections.

Sunningdale train station is less than a mile from Wildcrest, offering a direct rail service terminating at London Waterloo, with London Underground access starting from Richmond Station.

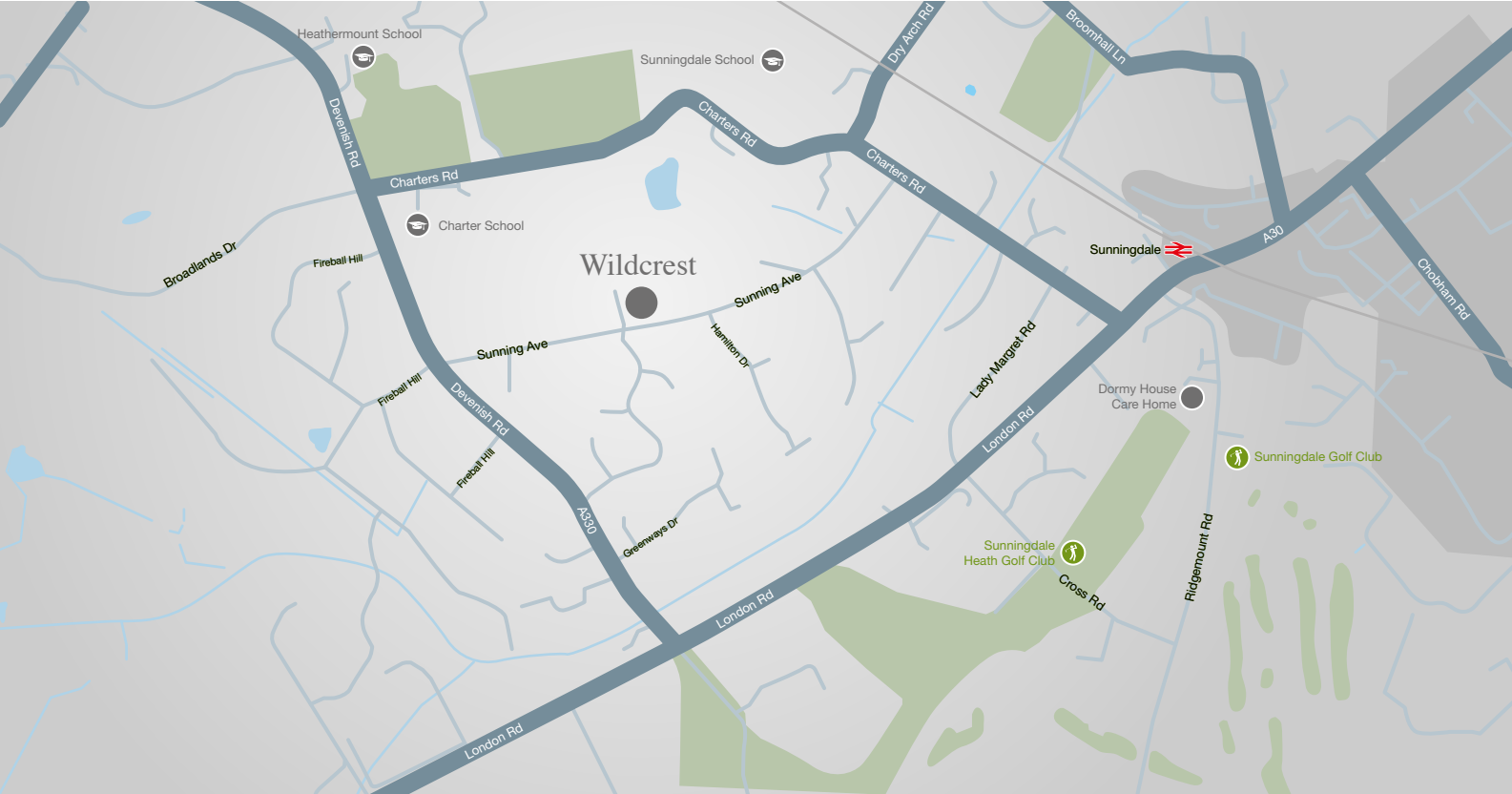
	Reading	Wokingham	Bracknell	Ascot	Sunningdale	Virginia Water	Egham	Staines	Ashford	Twickenham	Richmond	Clapham	Vauxhall	Waterloo
	◆	◆	◆	◆	◆	◆	◆	◆	◆	◆	◆	◆	◆	◆
	31mins	19mins	11mins	4mins	0mins	6mins	10mins	15mins	16mins	27mins	32mins	37mins	45mins	46mins

Road distances are approximate. Rail times are variable and subject to change

Binding

Binding

Location



Postcode for your navigation system: SL5 9PN

By rail - Sunningdale station is 0.6 miles from Wildcrest

By road - Sunningdale can easily be reached via the M3, M4 and M25 motorways.

By air - Heathrow Airport is the closet major airport, with Terminal 5 being approximately 9 miles from Sunningdale. Gatwick, Stanstead & Luton airports are also all easily accessible via the M25. There are several private airports in close proximity to Sunningdale, with Blackbushe and Farnborough being the nearest.

Wildcrest

Wildcrest, is Hamill Homes' latest luxury development. With over 11,000 sq. ft. of luxurious property set in 0.7 acres of land in Ascot, this is an extremely desirable home. This is a private client development undertaken by Hamill Homes. EPC rating B (88)