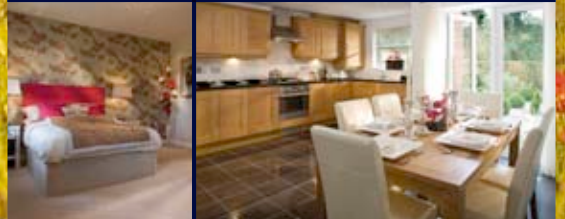


Taylor Wimpey at Wichelstowe



A development of 2, 3 & 4 bedroom homes offering space and individuality, conveniently located for Swindon town centre and the M4.

Taylor Wimpey at Wichelstowe

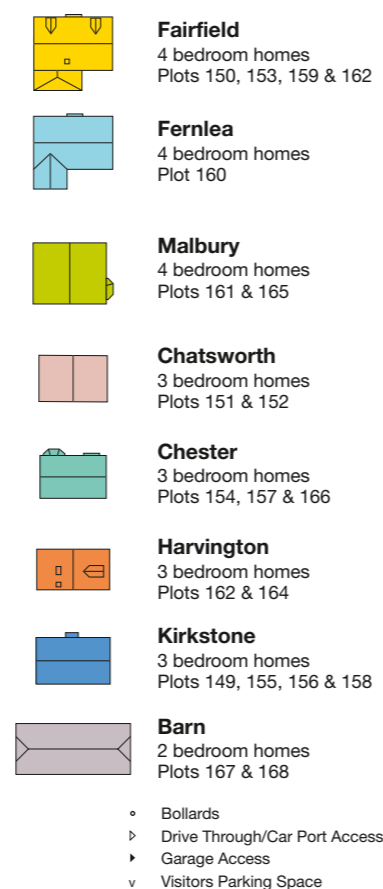
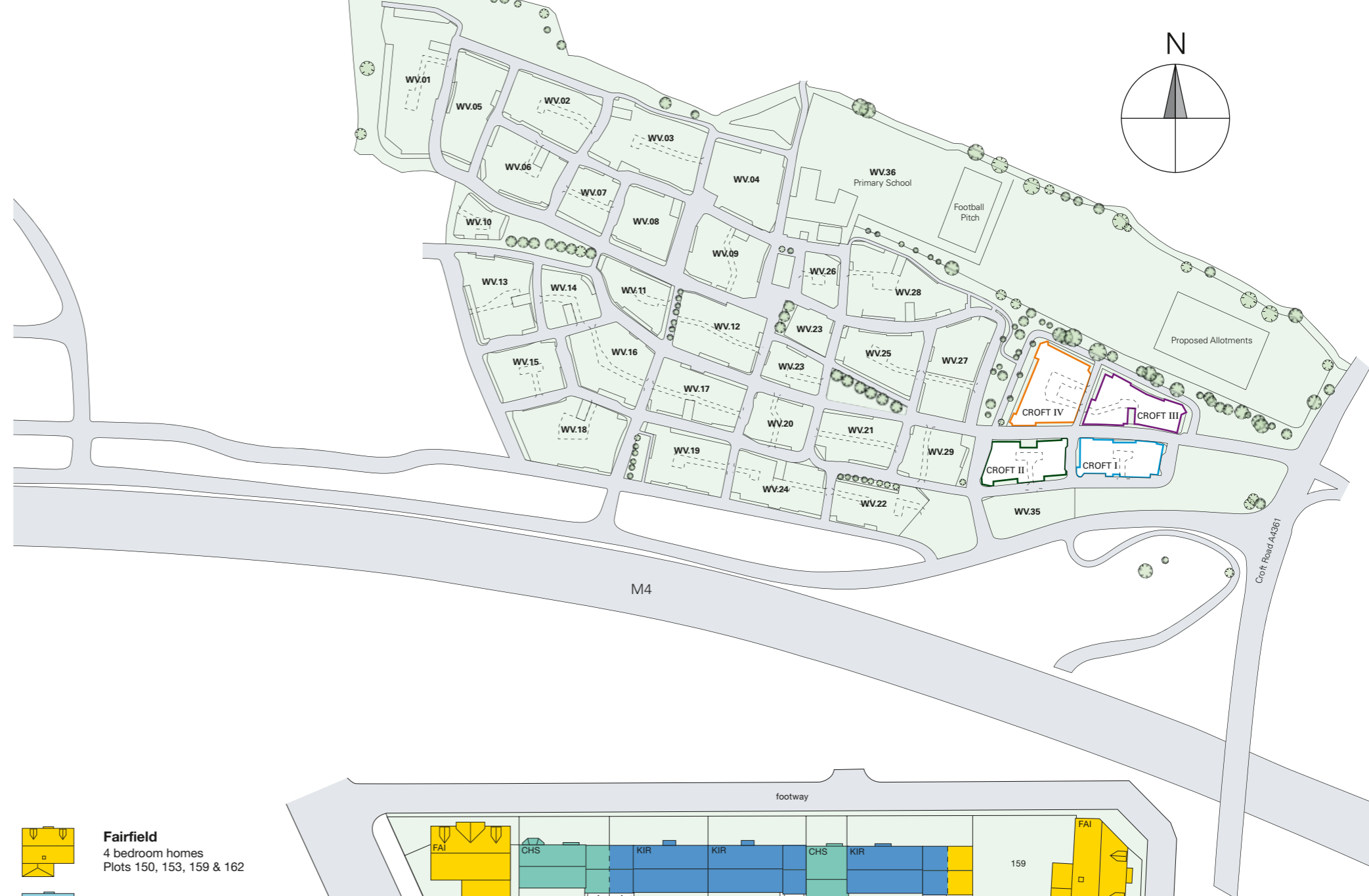
Wichelstowe is a carefully planned, sustainable urban extension to the town of Swindon, conveniently located to the north of the M4 motorway and Croft Road.

It's a development that provides a real sense of space for residents as nearly 50% of the site will remain 'green' and have a semi-rural feel. For example, over 13,000 trees will be planted. The result is plenty of room for everyone to enjoy, including playing fields and a 205 acre country park.

As befits a town with the heritage of Swindon, the very name 'Wichelstowe' (which was chosen after extensive local research and consultation with residents' associations, parish councils and the borough councillors) has ancient roots. The word Wichel is steeped in the history of Swindon and was recorded in the Domesday Book of 1086. Stowe is an Old English word meaning a meeting place.

Today Wichelstowe is so much more than a housing development. Yes, there will eventually be around 4,500 homes here but Taylor Wimpey's stylish new homes at The Croft all have the kind of external individuality that really sets them apart. In addition, new schools for local children, employment space, community facilities, places of worship, retail and commercial units and a 4.5 kilometre extension to the Wiltshire and Berkshire canal are all in place, ongoing or are planned for Wichelstowe.

And being close to Swindon's vibrant town centre – with its renowned shopping, leisure and entertainment facilities – the railway station and the M4 motorway, Wichelstowe offers something for everybody, from first time buyers to growing families and commuters to the newly retired.



The Development Layout does not show details of gradients of land, boundary treatments, local authority street lighting or landscaping. It is our intention to build in accordance with this layout. However, there may be occasions when the house designs, boundaries, landscaping and positions of roads and footpaths change as the development proceeds. Please check the details of your chosen property with your Sales Executive prior to reservation.



Key features

- Spacious living/dining room
- French doors opening to garden from living/dining room
- En-suite to master bedroom
- Downstairs cloakroom

3 bedroom home

The computer generated image (CGI) has been created from an imaginary viewpoint within an open space area. Its purpose is to give a feel for the development, not an accurate description of each property. The CGI shows a typical Taylor Wimpey home of this type, but there may be variances from site to site. External materials, finishes, landscaping and the position of garages, (where provided) may vary throughout the development. Homes may also be built handed (mirror image). Please enquire for further details.

Chatsworth

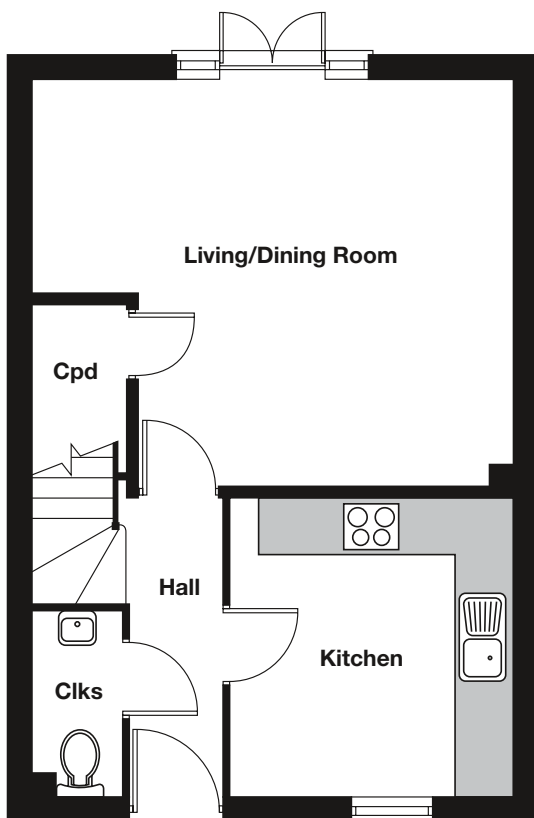
Ground Floor

Kitchen

3.17m x 3.00m 10'5" x 9'10"

Living/Dining Room (Max. Inc. Cpd.)

4.34m x 5.11m 14'3" x 16'9"



First Floor

Bedroom 1 (Min.)

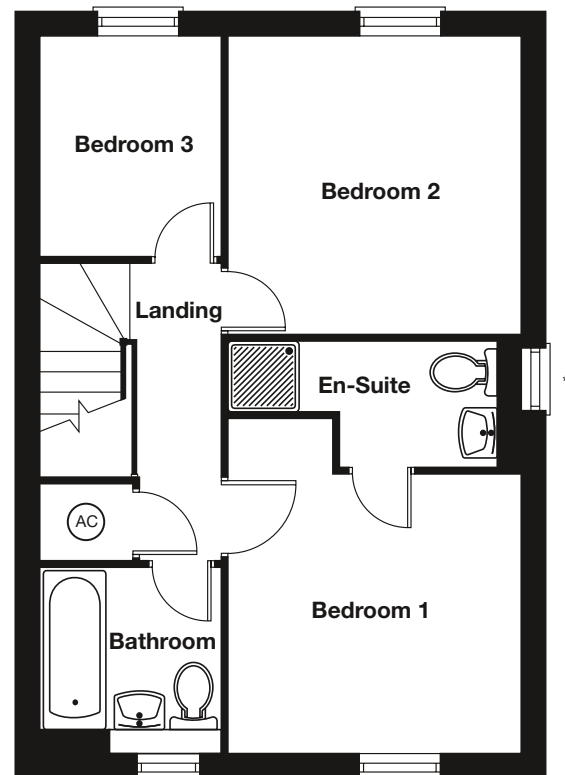
2.96m x 3.12m 9'9" x 10'3"

Bedroom 2

3.18m x 3.12m 10'5" x 10'3"

Bedroom 3

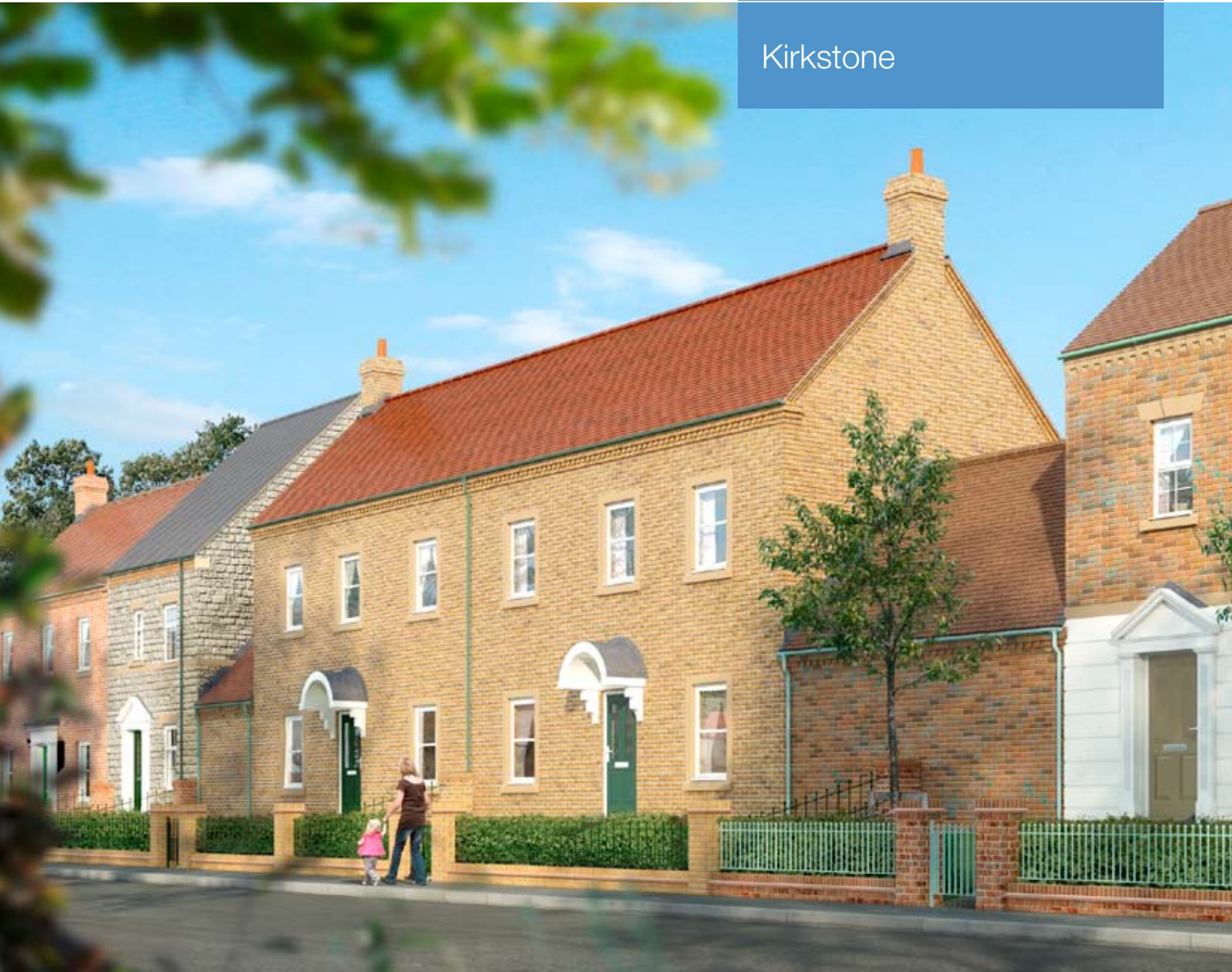
2.33m x 1.92m 7'8" x 6'4"



Please note

*Window to plot 152 only.
Floor plans show Plot 151, Plot 152 is a handed version of the plans shown.
Please liaise with your Sales Executive for further details.

The floor plans depict a typical layout of this house type. For exact plot specification, details of external and internal finishes, dimensions and floor plan differences consult your Sales Executive.
All dimensions are + or - 50mm and floor plans are not shown to scale. TWOX31/October 2009



Key features

- Separate dining room
- French doors opening to garden from living room
- En-suite to master bedroom
- Downstairs cloakroom

3 bedroom home

The computer generated image (CGI) has been created from an imaginary viewpoint within an open space area. Its purpose is to give a feel for the development, not an accurate description of each property. The CGI shows a typical Taylor Wimpey home of this type, but there may be variances from site to site. External materials, finishes, landscaping and the position of garages, (where provided) may vary throughout the development. Homes may also be built handed (mirror image). Please enquire for further details.

taylorwimpey.co.uk

Ground Floor – Plot 149

Kitchen (Max. Inc. Cpd.)
4.29m x 2.53m 14'1" x 8'4"

Living Room (Min.)
5.08m x 2.31m 16'8" x 7'7"

Dining Room (Max. Inc. Bay)
3.20m x 2.79m 10'6" x 9'2"

First Floor – Plot 149

Bedroom 1 (Min.)
3.39m x 2.34m 11'1" x 7'8"

Bedroom 2 (Min.)
2.97m x 2.26m 9'9" x 7'5"

Bedroom 3
3.35m x 2.03m 11'0" x 6'8"

Ground Floor – Plots 155 & 156

Kitchen (Max. Inc. Cpd.)
4.29m x 2.53m 14'1" x 8'4"

Living Room
5.08m x 3.10m 16'8" x 10'2"

Dining Room
2.79m x 2.41m 9'2" x 7'11"

First Floor – Plots 155 & 156

Bedroom 1
3.99m x 3.13m 13'1" x 10'3"

Bedroom 2 (Min.)
2.97m x 2.26m 9'9" x 7'5"

Bedroom 3
2.03m x 3.35m 6'8" x 11'0"

Ground Floor – Plot 158

Kitchen (Max. Inc. Cpd.)
4.29m x 2.53m 14'1" x 8'4"

Living Room
5.08m x 3.10m 16'8" x 10'2"

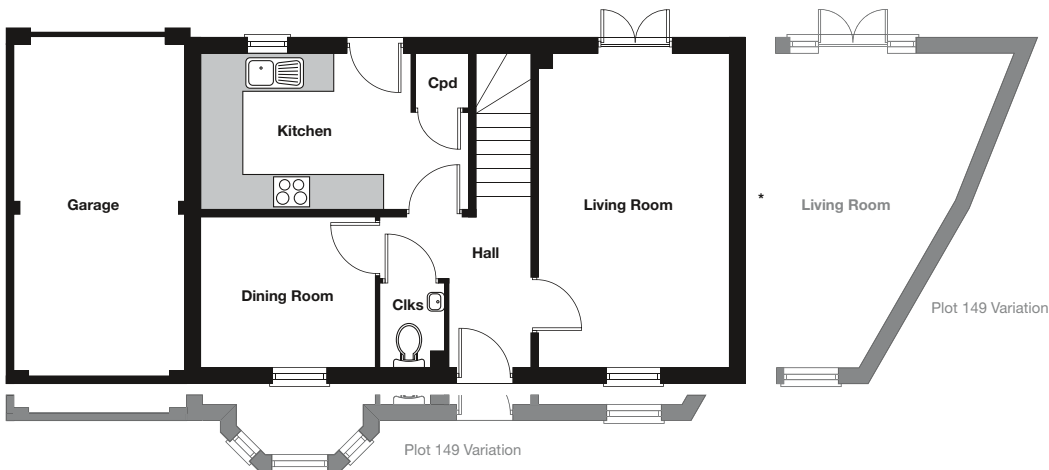
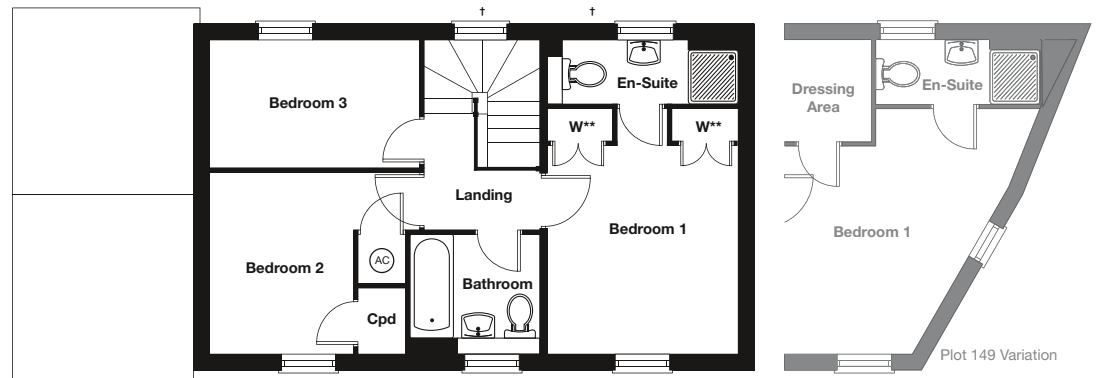
Dining Room
2.79m x 2.41m 9'2" x 7'11"

First Floor – Plot 158

Bedroom 1 (Min.)
3.36m x 3.13m 11'0" x 10'3"

Bedroom 2 (Min.)
2.97m x 2.26m 9'9" x 7'5"

Bedroom 3
3.35m x 2.03m 11'0" x 6'8"



Please note

Floor plans show Plot 158, Plot 156 is a handed version of the plans shown.

*Garage to Plot 155 & 156 appear on the right. **Wardrobes to plot 158 only.

†Window position and size vary on plot 155 & 156

Please liaise with your Sales Executive for further details.



Key features

- Separate dining room
- Open plan kitchen/family room
- En-suites to bedrooms 1 & 2
- French doors opening to garden from living room & kitchen/family room

4 bedroom home

The computer generated image (CGI) has been created from an imaginary viewpoint within an open space area. Its purpose is to give a feel for the development, not an accurate description of each property. The CGI shows a typical Taylor Wimpey home of this type, but there may be variances from site to site. External materials, finishes, landscaping and the position of garages, (where provided) may vary throughout the development. Homes may also be built handed (mirror image). Please enquire for further details.

taylorwimpey.co.uk

Fairfield

Ground Floor – Plots 150 & 162

Kitchen/Family Area (Max.)

5.19m x 4.86m 17'0" x 15'11"

Living Room

5.86m x 3.42m 19'3" x 11'3"

Dining Room (Min.)

3.32m x 2.73m 10'11" x 8'11"

First Floor – Plots 150 & 162

Bedroom 1

4.26m x 3.42m 14'0" x 11'3"

Bedroom 2

4.26m x 3.19m 14'0" x 10'6"

Study

2.30m x 2.11m 7'7" x 6'11"

Second Floor – Plot 150

Bedroom 3 (Min.)

4.69m x 3.44m 15'5" x 11'3"

Bedroom 4 (Min.)

4.69m x 3.22m 15'5" x 10'7"

Second Floor – Plot 162

Bedroom 3

5.28m x 3.44m 17'4" x 11'3"

Bedroom 4

5.28m x 3.22m 17'4" x 10'7"



Please note

*Door to plot 162 only.

Floor plans show Plot 150 Ground and First Floor, Plot 162 is a handed version of the plans shown. Please liaise with your Sales Executive for further details.

The floor plans depict a typical layout of this house type. For exact plot specification, details of external and internal finishes, dimensions and floor plan differences consult your Sales Executive. All dimensions are + or - 50mm and floor plans are not shown to scale.

Fairfield

Ground Floor – Plot 153

Kitchen/Family Area (Max.)

5.19m x 4.86m 17'0" x 15'11"

Living Room

5.86m x 3.32m 19'3" x 10'11"

Dining Room (Min.)

3.32m x 2.73m 10'11" x 8'11"

First Floor – Plot 153

Bedroom 1 (Min.)

4.26m x 2.99m 14'0" x 9'10"

Bedroom 2 (Min.)

4.26m x 3.00m 14'0" x 9'10"

Study

2.87m x 2.74m 9'5" x 9'0"

Second Floor – Plot 153

Bedroom 3 (Min.)

5.28m x 3.34m 17'4" x 10'11"

Bedroom 4 (Min.)

5.28m x 3.32m 17'4" x 10'11"



Fairfield

Ground Floor – Plot 159

Kitchen/Family Area (Max.)

4.86m x 5.19m 15'11" x 17'0"

Living Room (Max.)

5.86m x 5.14m 19'3" x 16'10"

Dining Room (Min.)

3.32m x 2.73m 10'11" x 8'11"

First Floor – Plot 159

Bedroom 1 (Max.)

5.86m x 5.14m 19'3" x 16'10"

Bedroom 2

4.26m x 3.19m 14'0" x 10'6"

Study

2.30m x 2.11m 7'7" x 6'11"

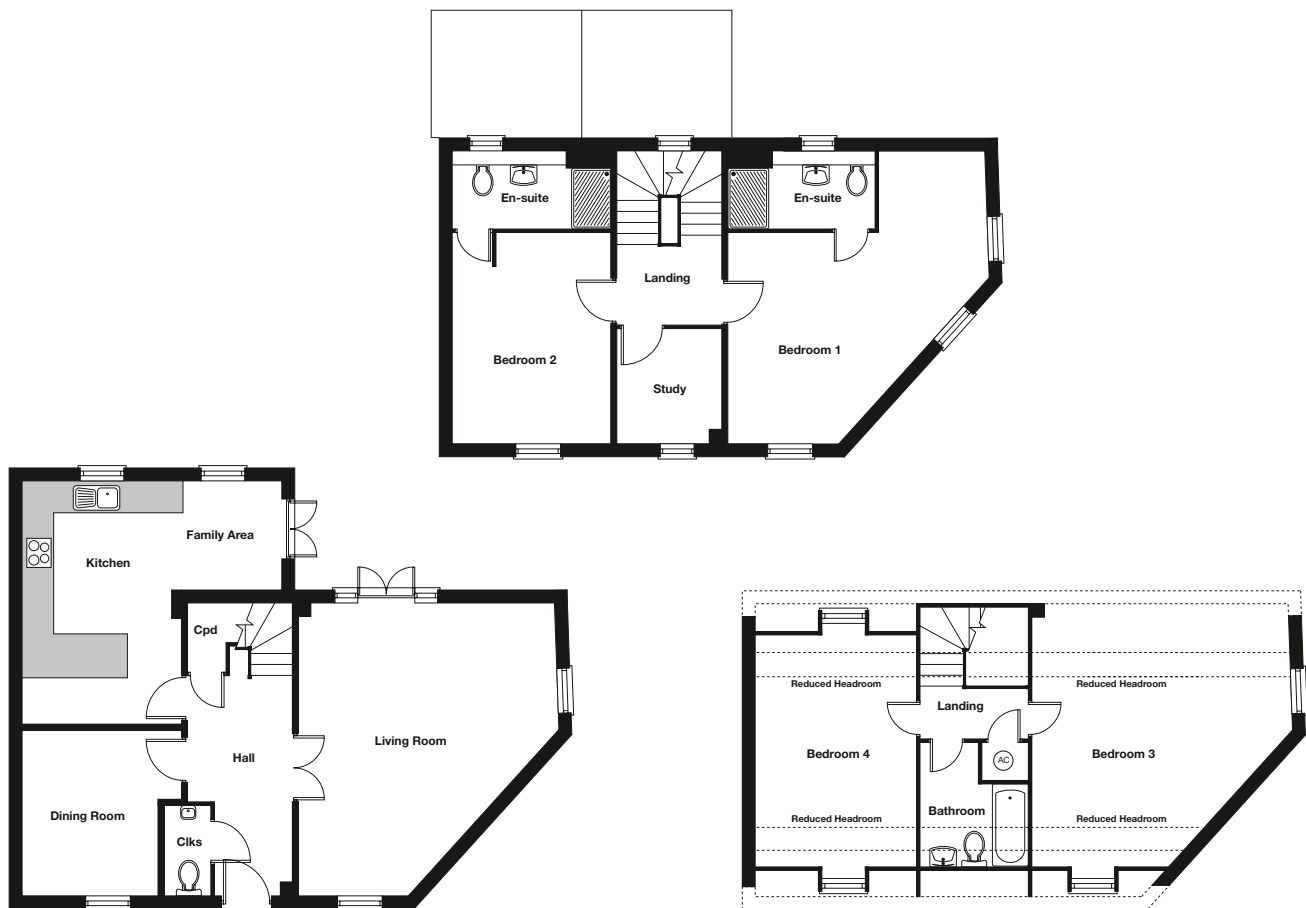
Second Floor – Plot 159

Bedroom 3 (Min.)

5.28m x 2.74m 17'4" x 9'0"

Bedroom 4

4.69m x 3.21m 15'5" x 10'7"





Key features

- Separate dining room
- French doors opening to garden from living room & kitchen
- En-suite to master bedroom
- Study

4 bedroom home

The computer generated image (CGI) has been created from an imaginary viewpoint within an open space area. Its purpose is to give a feel for the development, not an accurate description of each property. The CGI shows a typical Taylor Wimpey home of this type, but there may be variances from site to site. External materials, finishes, landscaping and the position of garages, (where provided) may vary throughout the development. Homes may also be built handed (mirror image). Please enquire for further details.

taylorwimpey.co.uk

Malbury

Ground Floor – Plot 161

Kitchen (Max.)

4.52m x 2.58m 14'10" x 8'6"

Living Room (Max.)

4.52m x 4.14m 14'10" x 13'7"

Dining Room (Max. Inc. Bay)

4.49m x 2.51m 14'9" x 8'3"

Study

2.53m x 2.24m 8'4" x 7'4"

First Floor – Plot 161

Bedroom 1 (Max.)

4.28m x 2.59m 14'0" x 8'6"

Bedroom 2 (Min.)

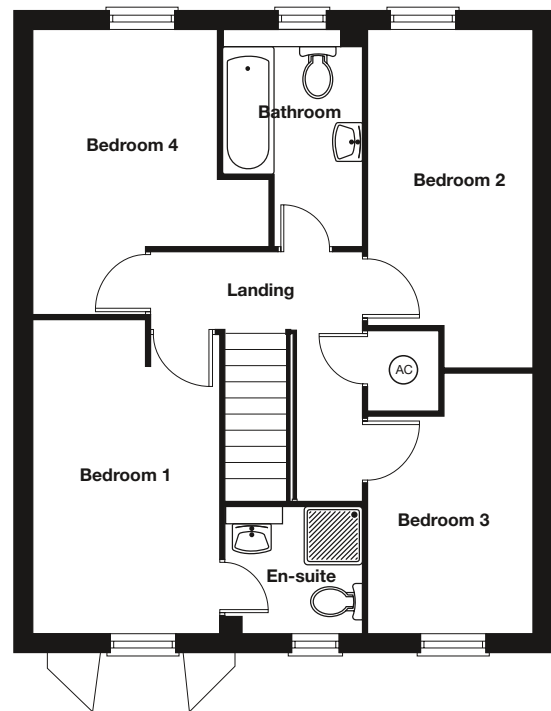
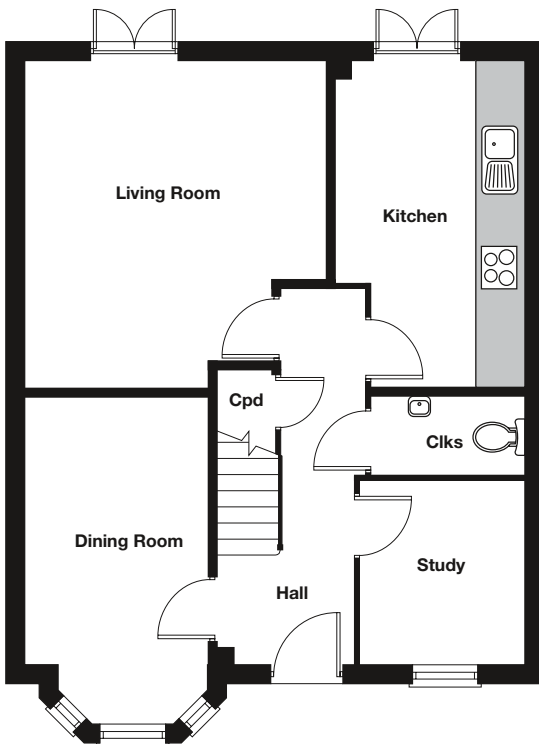
4.08m x 2.24m 13'5" x 7'4"

Bedroom 3 (Min.)

2.94m x 2.24m 9'8" x 7'4"

Bedroom 4 (Min.)

2.97m x 2.54m 9'9" x 8'4"



Malbury

Plot 165

Kitchen (Max.)

4.52m x 2.97m 14'10" x 9'9"

Living Room (Max.)

4.57m x 4.14m 15'0" x 13'7"

Dining Room

3.69m x 2.51m 12'1" x 8'3"

Study (Min.)

1.90m x 1.87m 6'3" x 6'2"

Plot 165

Bedroom 1 (Max.)

4.33m x 2.59m 14'3" x 8'6"

Bedroom 2 (Min.)

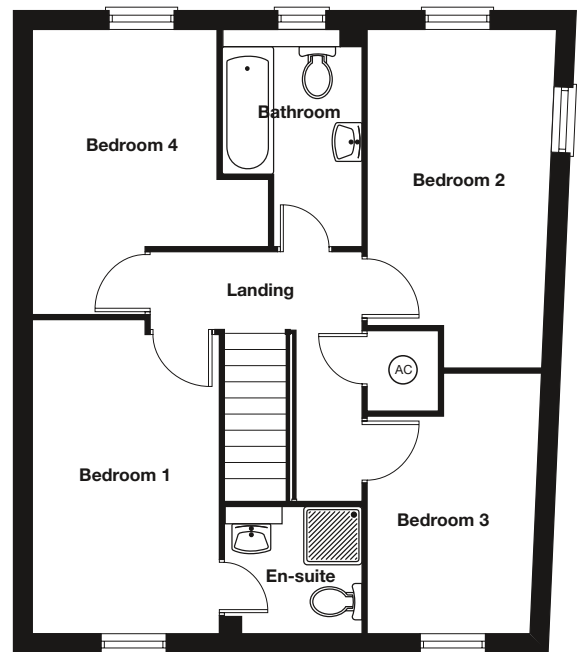
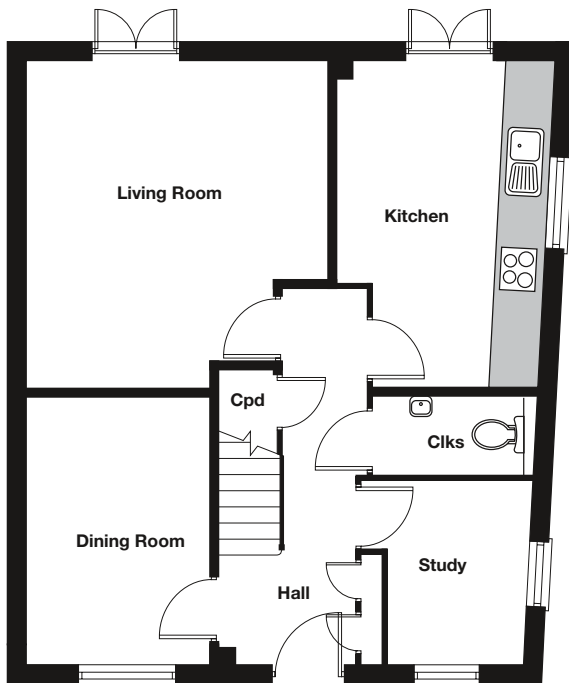
4.08m x 2.63m 13'5" x 8'8"

Bedroom 3 (Min.)

2.94m x 2.24m 9'8" x 7'4"

Bedroom 4 (Min.)

2.97m x 2.54m 9'9" x 8'4"



Chester



Key features

- French doors opening to garden from living room
- En-suite to master bedroom
- Downstairs cloakroom

3 bedroom home

taylorwimpey.co.uk

Chester

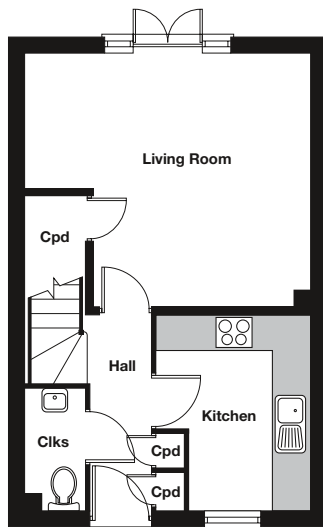
Ground Floor – Plot 157

Kitchen (Max.)

3.17m x 2.48m 10'5" x 8'2"

Living Room (Max. Inc. Cpd.)

4.60m x 4.11m 15'1" x 13'6"



First Floor – Plot 157

Bedroom 1 (Min.)

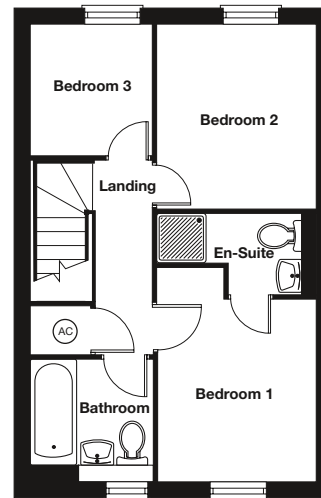
2.92m x 2.60m 9'7" x 8'6"

Bedroom 2

3.06m x 2.60m 10'0" x 8'6"

Bedroom 3

2.15m x 1.93m 7'1" x 6'4"



Chester

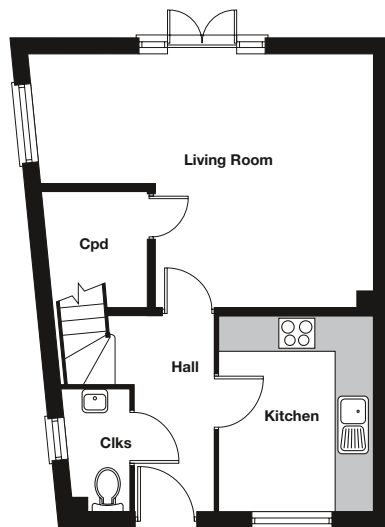
Ground Floor – Plot 166

Kitchen

3.17m x 2.48m 10'5" x 8'2"

Living Room (Max. Inc. Cpd.)

5.62m x 4.11m 18'5" x 13'6"



First Floor – Plot 166

Bedroom 1

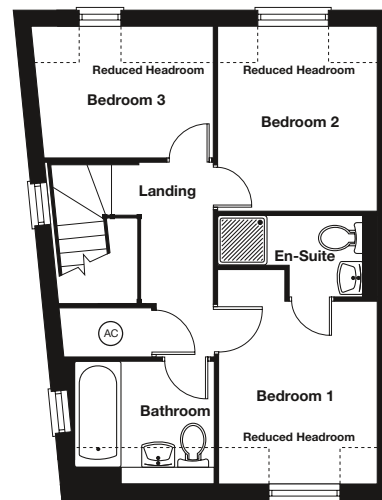
2.92m x 2.60m 9'7" x 8'6"

Bedroom 2

3.06m x 2.60m 10'0" x 8'6"

Bedroom 3 (Max.)

2.94m x 2.10m 9'8" x 6'11"



Chester

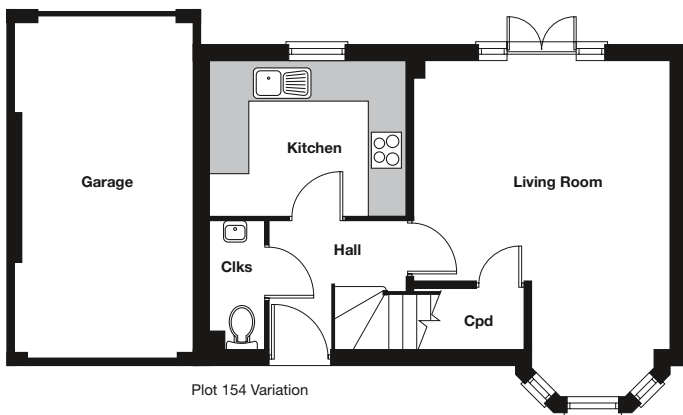
Ground Floor – Plot 154

Kitchen

3.17m x 2.48m 10'5" x 8'2"

Living Room (Max. Inc. Cpd. Ex. Bay)

4.60m x 4.11m 15'1" x 13'6"



Plot 154 Variation

First Floor – Plot 154

Bedroom 1 (Min.)

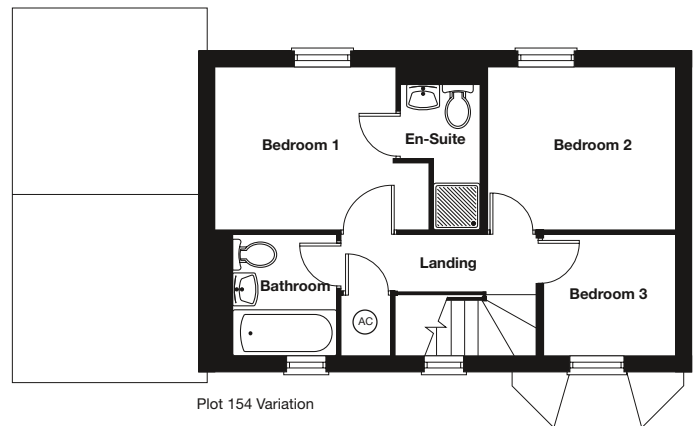
2.92m x 2.60m 9'7" x 8'6"

Bedroom 2

3.02m x 2.60m 9'11" x 8'6"

Bedroom 3

2.10m x 1.93m 6'11" x 6'4"



Plot 154 Variation



Key features

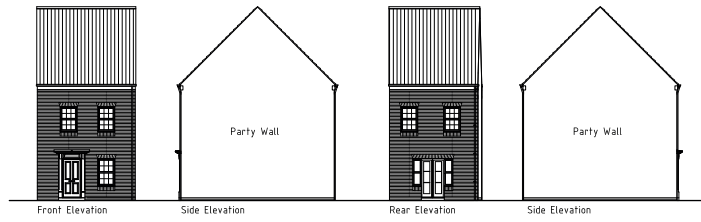
- Spacious lounge/dining room with French doors to rear garden
- En-suite to bedroom 1
- Downstairs cloakroom

3 bedroom home

The computer generated image (CGI) has been created from an imaginary viewpoint within an open space area. Its purpose is to give a feel for the development, not an accurate description of each property. The CGI shows a typical Taylor Wimpey home of this type, but there may be variances from site to site. External materials, finishes, landscaping and the position of garages, (where provided) may vary throughout the development. Homes may also be built handed (mirror image). Please enquire for further details.

taylorwimpey.co.uk

Chester – Plot 117



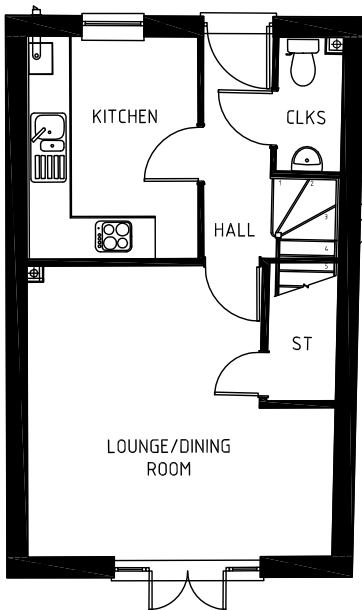
Ground Floor

Kitchen

3.21m x 2.48m 10'6" x 8'2"

Lounge/Dining Room

4.39m x 4.20m 14'5" x 13'9"



First Floor

Bedroom 1

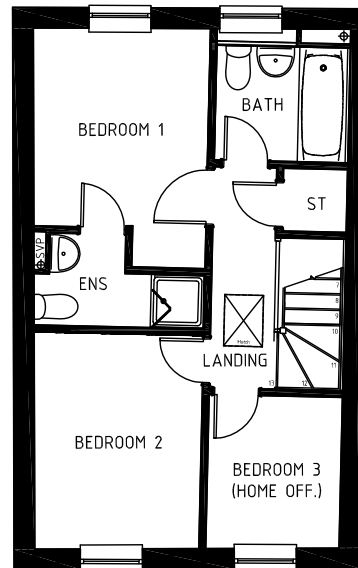
2.86m x 2.57m 9'5" x 8'5"

Bedroom 2

3.15m x 2.37m 10'4" x 7'9"

Bedroom 3

2.17m x 1.92m 7'2" x 6'4"





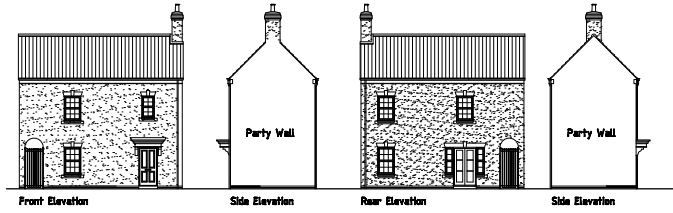
Key features

- Spacious lounge/dining room with French doors to rear garden
- Downstairs cloakroom
- Family bathroom

2 bedroom home

The computer generated image (CGI) has been created from an imaginary viewpoint within an open space area. Its purpose is to give a feel for the development, not an accurate description of each property. The CGI shows a typical Taylor Wimpey home of this type, but there may be variances from site to site. External materials, finishes, landscaping and the position of garages, (where provided) may vary throughout the development. Homes may also be built handed (mirror image). Please enquire for further details.

Douglas – Plot 118



Ground Floor

Kitchen

2.17m x 2.03m 8'11" x 6'8"

Lounge/Dining Room

4.09m x 3.95m 13'5" x 13'0"

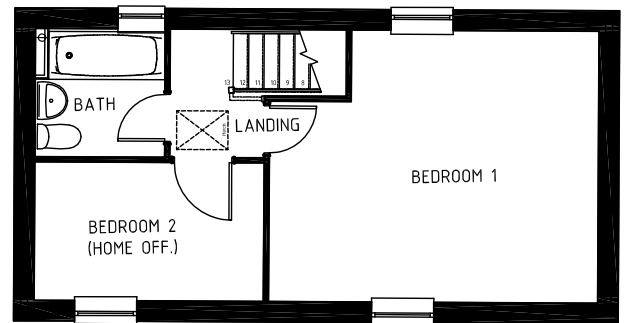
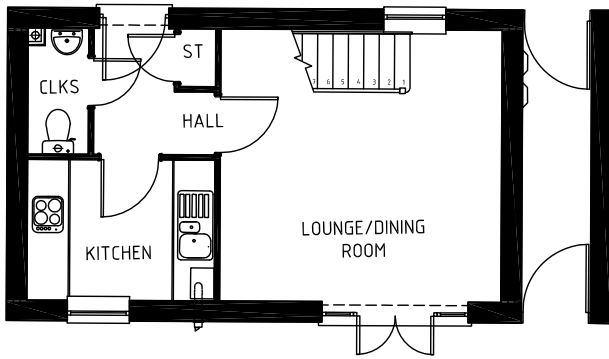
First Floor

Bedroom 1

4.78m x 3.92m 15'8" x 12'11"

Bedroom 2

3.32m x 2.00m 10'11" x 6'7"





Key features

- Spacious lounge/dining room with French doors to rear garden
- Downstairs cloakroom
- Family bathroom

2 bedroom home

The computer generated image (CGI) has been created from an imaginary viewpoint within an open space area. Its purpose is to give a feel for the development, not an accurate description of each property. The CGI shows a typical Taylor Wimpey home of this type, but there may be variances from site to site. External materials, finishes, landscaping and the position of garages, (where provided) may vary throughout the development. Homes may also be built handed (mirror image). Please enquire for further details.

Douglas – Plot 125



Ground Floor

Kitchen

2.71m x 2.00m 8'11" x 6'7"

Lounge/Dining Room

5.03m x 4.56m 16'6" x 15'0"

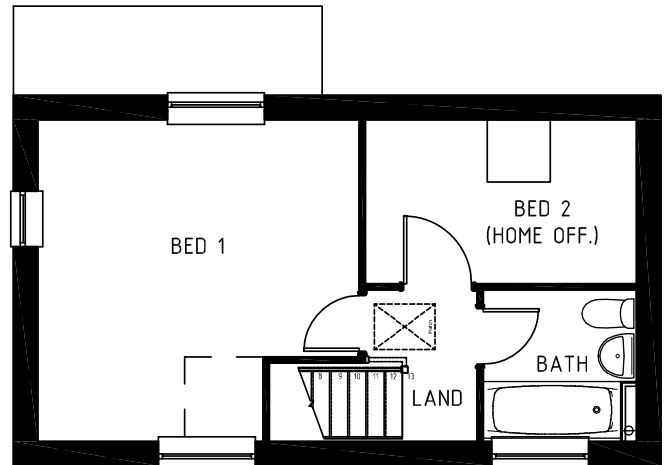
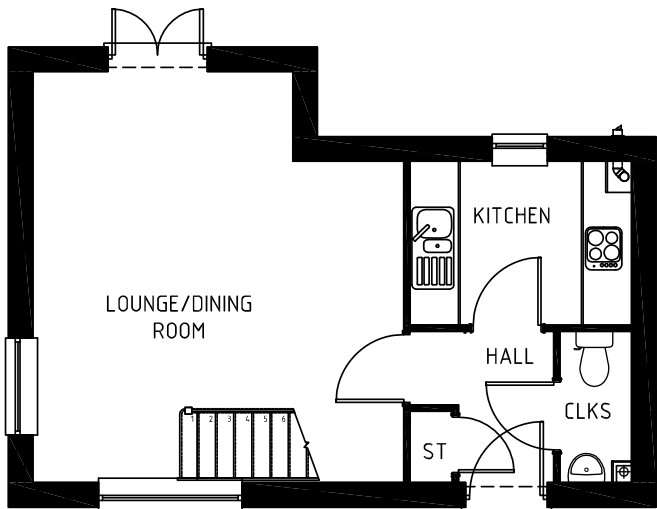
First Floor

Bed 1

3.95m x 3.92m 13'0" x 12'11"

Bed 2

3.32m x 2.00m 10'11" x 6'7"





Key features

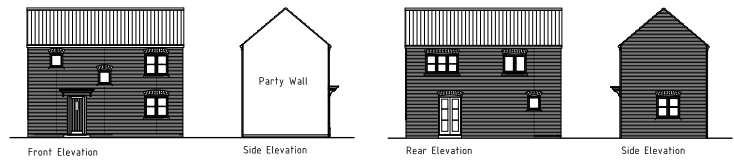
- Spacious lounge/dining room with French doors to rear garden
- Downstairs cloakroom
- Family bathroom

2 bedroom home

The computer generated image (CGI) has been created from an imaginary viewpoint within an open space area. Its purpose is to give a feel for the development, not an accurate description of each property. The CGI shows a typical Taylor Wimpey home of this type, but there may be variances from site to site. External materials, finishes, landscaping and the position of garages, (where provided) may vary throughout the development. Homes may also be built handed (mirror image). Please enquire for further details.

taylorwimpey.co.uk

Douglas – Plot 129



Ground Floor

Kitchen

3.44m x 2.00m 11'4" x 6'7"

Lounge/Dining Room

4.09m x 3.92m 13'5" x 12'11"

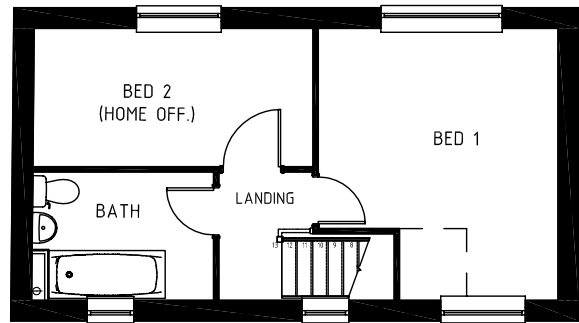
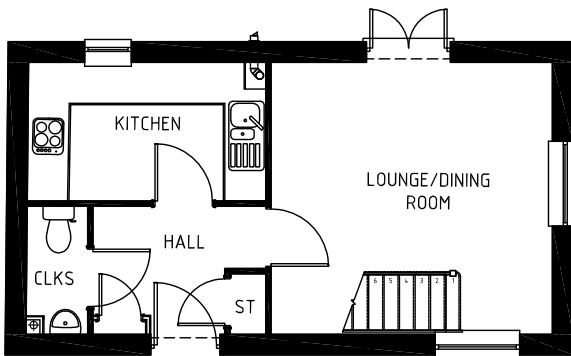
First Floor

Bed 1

3.92m x 3.48m 12'11" x 11'5"

Bed 2

4.05m x 2.00m 13'3" x 6'7"





Key features

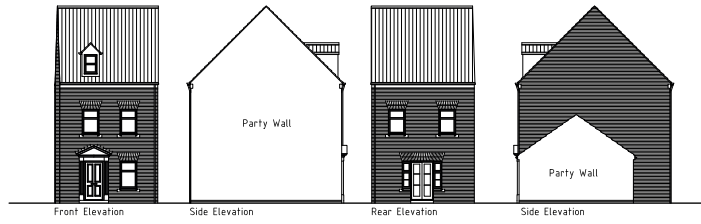
- Spacious lounge/dining room with French doors to rear garden
- En-suite to bedroom 1
- Downstairs cloakroom

3 bedroom home

The computer generated image (CGI) has been created from an imaginary viewpoint within an open space area. Its purpose is to give a feel for the development, not an accurate description of each property. The CGI shows a typical Taylor Wimpey home of this type, but there may be variances from site to site. External materials, finishes, landscaping and the position of garages, (where provided) may vary throughout the development. Homes may also be built handed (mirror image). Please enquire for further details.

taylorwimpey.co.uk

Chester – Plot 119



Ground Floor

Kitchen

3.17m x 2.48m 10'5" x 8'2"

Lounge/Dining Room

4.83m x 4.11m 15'10" x 13'6"

First Floor

Bedroom 1

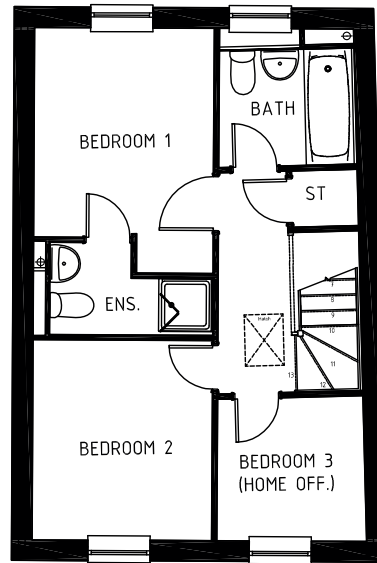
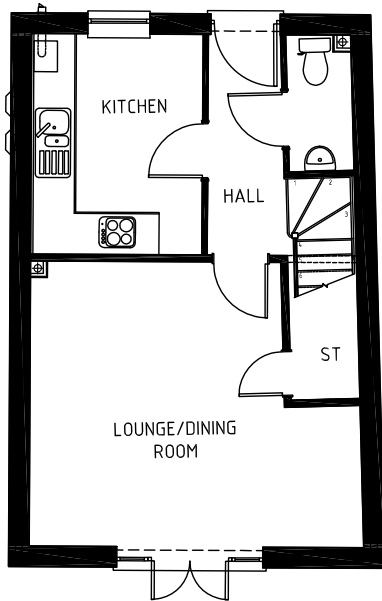
3.04m x 2.59m 10'0" x 8'6"

Bedroom 2

2.90m x 2.60m 9'6" x 8'6"

Bedroom 3

2.16m x 2.11m 7'1" x 6'11"





Key features

- Spacious lounge/dining room with French doors to rear garden
- Family bathroom
- Downstairs cloakroom

3 bedroom home

The computer generated image (CGI) has been created from an imaginary viewpoint within an open space area. Its purpose is to give a feel for the development, not an accurate description of each property. The CGI shows a typical Taylor Wimpey home of this type, but there may be variances from site to site. External materials, finishes, landscaping and the position of garages, (where provided) may vary throughout the development. Homes may also be built handed (mirror image). Please enquire for further details.

Chester – Plot 120



Ground Floor

Kitchen

2.99m x 2.16m 9'10" x 7'1"

Lounge/Dining Room

4.60m x 4.27m 15'1" x 14'0"

First Floor

Bedroom 1

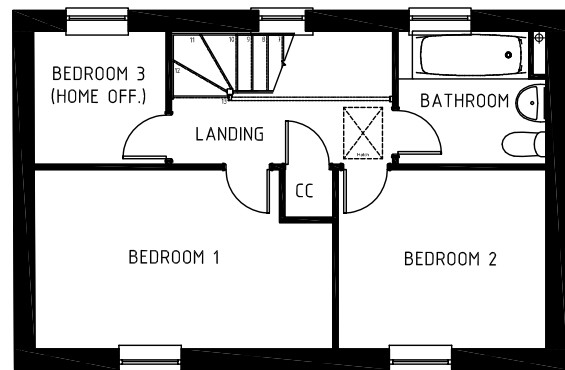
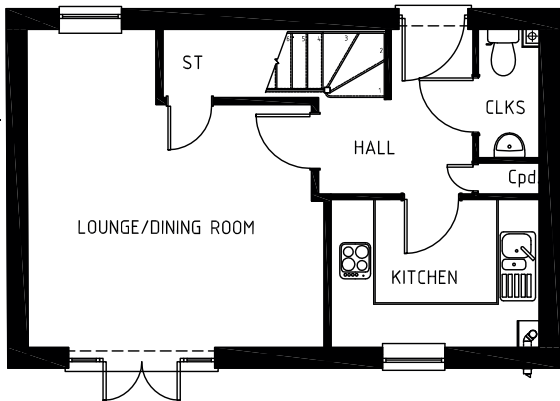
4.33m x 2.60m 14'2" x 8'6"

Bedroom 2

3.61m x 2.60m 9'11" x 8'6"

Bedroom 3

1.93m x 1.90m 6'4" x 6'3"





Key features

- Kitchen with French doors to rear garden
- Spacious lounge with French doors to rear garden
- Dining room with bay window
- Separate utility
- En-suite to bed 1

4 bedroom home

The computer generated image (CGI) has been created from an imaginary viewpoint within an open space area. Its purpose is to give a feel for the development, not an accurate description of each property. The CGI shows a typical Taylor Wimpey home of this type, but there may be variances from site to site. External materials, finishes, landscaping and the position of garages, (where provided) may vary throughout the development. Homes may also be built handed (mirror image). Please enquire for further details.

taylorwimpey.co.uk

Fernlea – Plot 124



Ground Floor

Kitchen

4.80m x 3.39m 15'9" x 11'1"

Lounge

5.86m x 3.13m 19'3" x 10'3"

Dining Room

4.15m x 3.39m 13'7" x 11'1"

First Floor

Bed 1

4.65m x 3.39m 15'3" x 11'2"

Bed 2

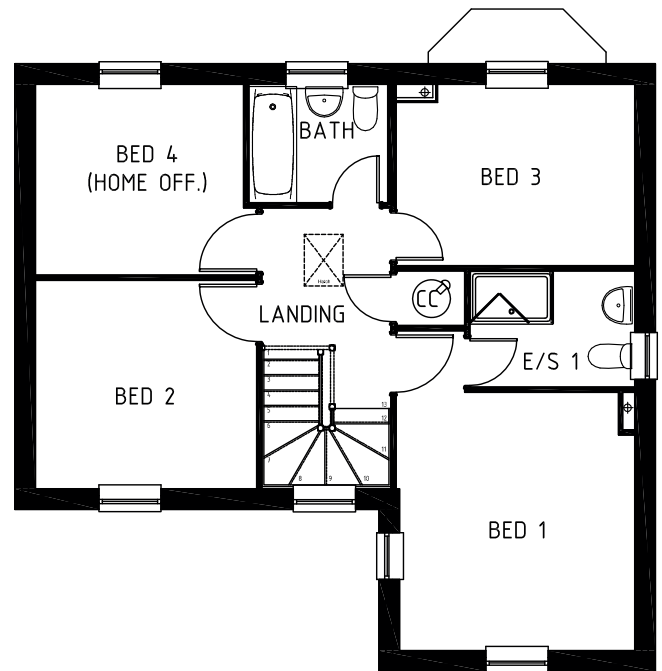
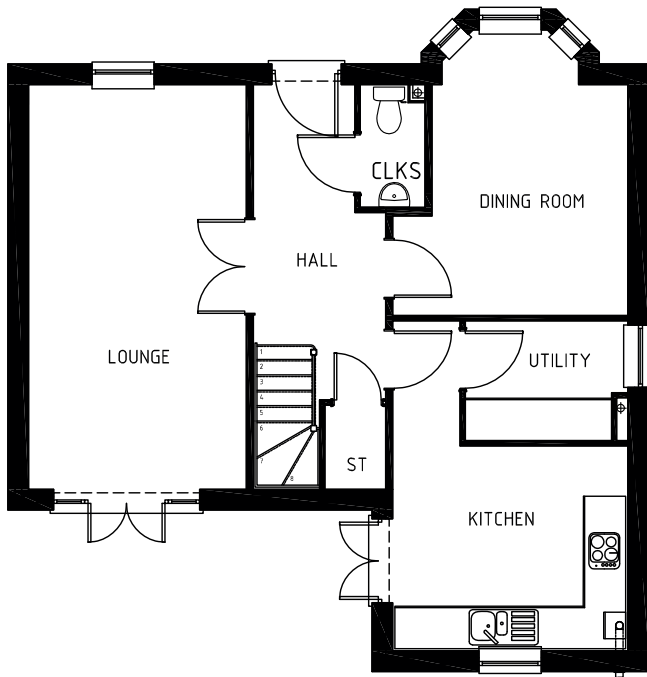
3.21m x 3.02m 10'6" x 9'11"

Bed 3

3.46m x 2.62m 11'4" x 8'7"

Bed 4

2.99m x 2.76m 9'10" x 9'1"





Key features

- Kitchen with French doors to rear garden
- Spacious lounge with French doors to rear garden
- Separate utility and separate study
- Separate dining room
- En-suite to bedroom 1

4 bedroom home

The computer generated image (CGI) has been created from an imaginary viewpoint within an open space area. Its purpose is to give a feel for the development, not an accurate description of each property. The CGI shows a typical Taylor Wimpey home of this type, but there may be variances from site to site. External materials, finishes, landscaping and the position of garages, (where provided) may vary throughout the development. Homes may also be built handed (mirror image). Please enquire for further details.

taylorwimpey.co.uk

Malbury – Plot 116



Ground Floor

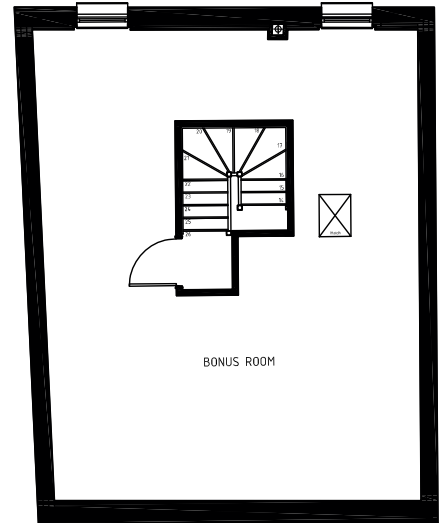
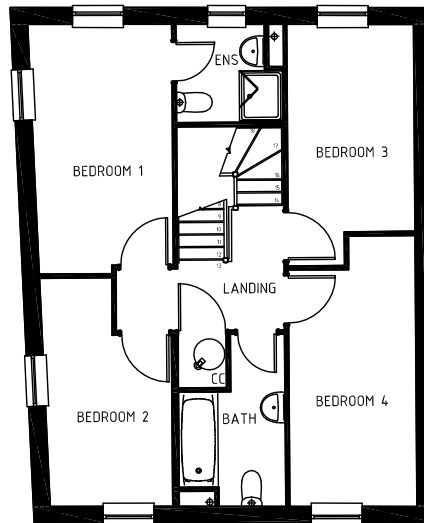
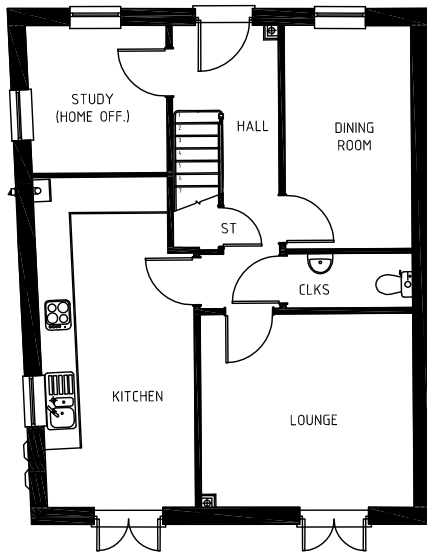
Kitchen	4.48m x 2.79m	14'9" x 9'2"
Lounge	3.75m x 3.42m	12'4" x 11'3"
Dining Room	3.96m x 2.21m	13'0" x 7'3"
Study	2.62m x 2.49m	8'7" x 8'2"

First Floor

Bedroom 1	4.43m x 2.54m	14'6" x 8'4"
Bedroom 2	4.04m x 2.16m	13'3" x 7'1"
Bedroom 3	3.67m x 2.24m	12'1" x 7'4"
Bedroom 4	4.80m x 2.24m	15'9" x 7'4"

Second Floor

Bonus Room	8.41m x 6.86m	27'7" x 22'6"
-------------------	---------------	---------------





Key features

- Kitchen/dining with French doors to rear garden
- Spacious living room with French doors to rear garden
- En-suite to beds 1 & 2
- Separate study
- Separate dining room

4 bedroom home

The computer generated image (CGI) has been created from an imaginary viewpoint within an open space area. Its purpose is to give a feel for the development, not an accurate description of each property. The CGI shows a typical Taylor Wimpey home of this type, but there may be variances from site to site. External materials, finishes, landscaping and the position of garages, (where provided) may vary throughout the development. Homes may also be built handed (mirror image). Please enquire for further details.

taylorwimpey.co.uk

Fairfield – Plot 121



Ground Floor

Kitchen/Dining

5.19m x 4.86m 17'0" x 16'0"

Lounge

5.86m x 3.42m 19'3" x 11'3"

Dining Room

3.32m x 3.19m 10'11" x 10'5"

First Floor

Bed 1

4.26m x 3.42m 14'0" x 11'3"

Bed 2

4.26m x 3.19m 14'0" x 10'6"

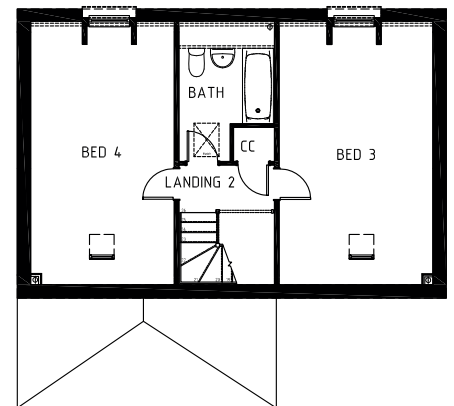
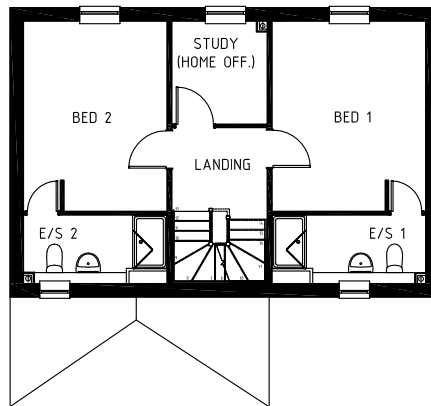
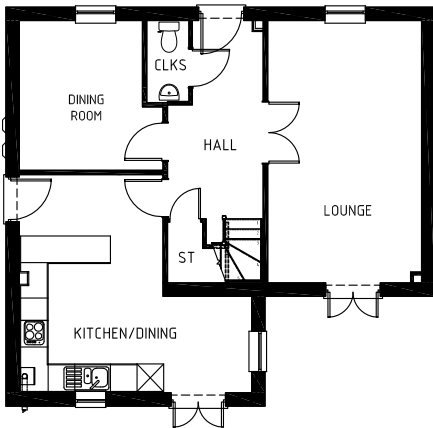
Second Floor

Bed 3

5.81m x 3.42m 19'1" x 11'3"

Bed 4

5.81m x 3.19m 19'1" x 10'6"





Key features

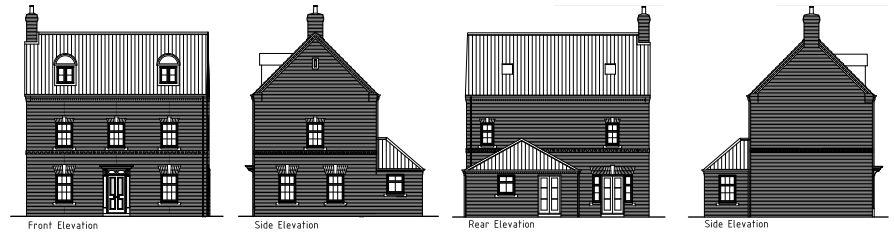
- Kitchen/dining with French doors to rear garden
- Spacious lounge with French doors to rear garden
- En-suite to beds 1 & 2
- Separate study
- Separate dining room

4 bedroom home

The computer generated image (CGI) has been created from an imaginary viewpoint within an open space area. Its purpose is to give a feel for the development, not an accurate description of each property. The CGI shows a typical Taylor Wimpey home of this type, but there may be variances from site to site. External materials, finishes, landscaping and the position of garages, (where provided) may vary throughout the development. Homes may also be built handed (mirror image). Please enquire for further details.

taylorwimpey.co.uk

Fairfield – Plot 122



Ground Floor

Kitchen/Dining

5.33m x 4.86m 17'6" x 16'0"

Lounge

5.86m x 3.41m 19'3" x 11'3"

Dining Room

3.32m x 3.24m 10'11" x 10'8"

First Floor

Bed 1

4.26m x 3.42m 14'0" x 11'3"

Bed 2

4.26m x 3.26m 14'0" x 10'9"

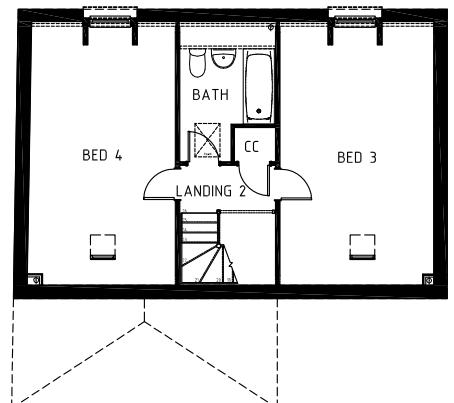
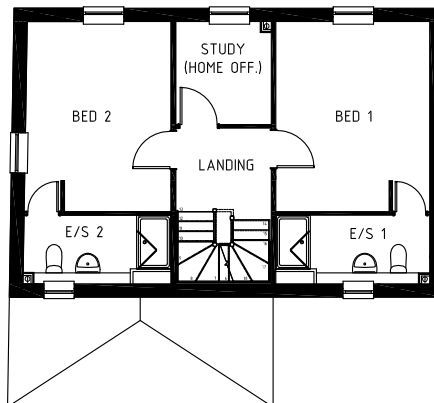
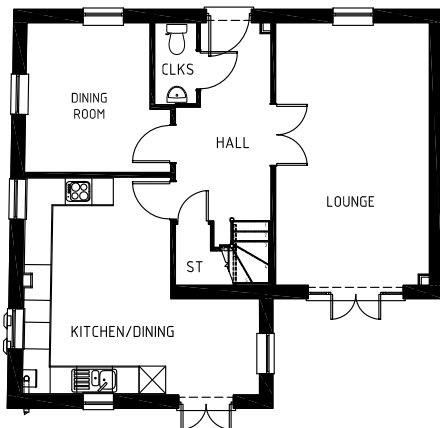
Second Floor

Bed 3

5.81m x 3.42m 19'1" x 11'3"

Bed 4

5.81m x 3.29m 19'1" x 10'10"





Key features

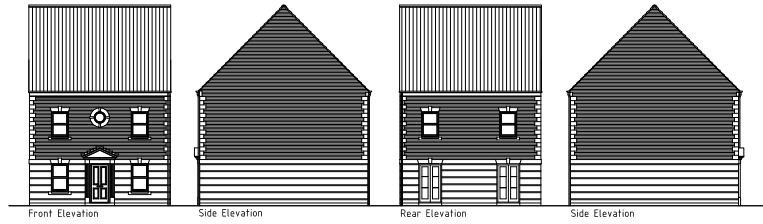
- Kitchen with French doors to rear garden
- Spacious lounge with French doors to rear garden
- Separate utility and separate study
- Separate dining room
- En-suite to bed 1

4 bedroom home

The computer generated image (CGI) has been created from an imaginary viewpoint within an open space area. Its purpose is to give a feel for the development, not an accurate description of each property. The CGI shows a typical Taylor Wimpey home of this type, but there may be variances from site to site. External materials, finishes, landscaping and the position of garages, (where provided) may vary throughout the development. Homes may also be built handed (mirror image). Please enquire for further details.

taylorwimpey.co.uk

Malbury – Plot 123



Ground Floor

Kitchen

4.60m x 2.50m 15'1" x 8'2"

Lounge

4.23m x 3.60m 13'10" x 11'6"

Study

2.50m x 2.42m 8'2" x 7'11"

Dining Room

3.66m x 2.23m 12'0" x 7'4"

First Floor

Bed 1

4.29m x 2.57m 14'1" x 8'5"

Bed 2

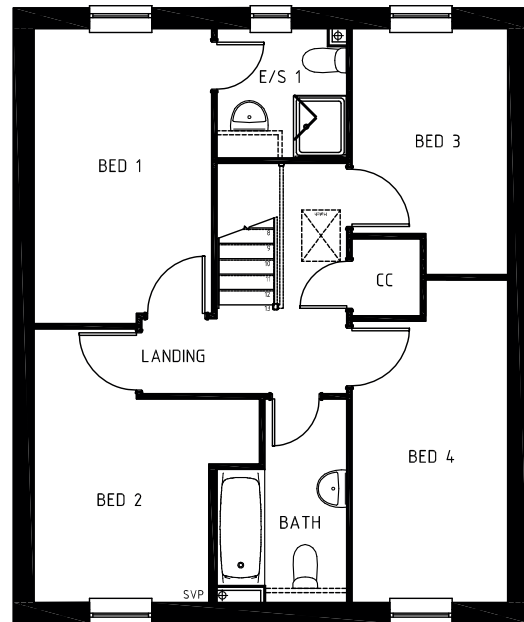
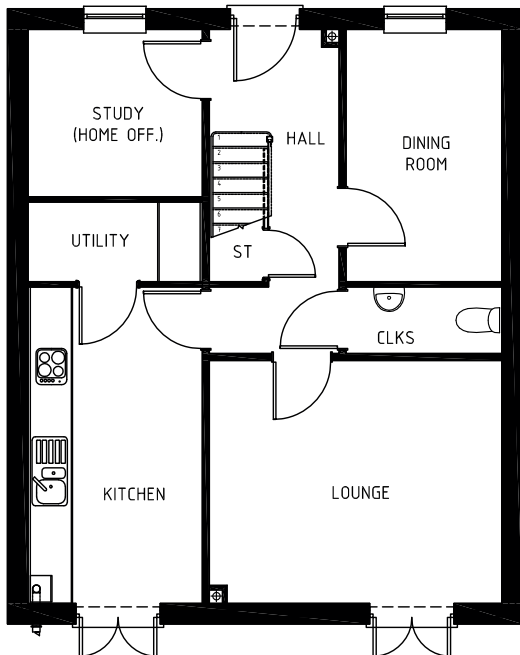
3.97m x 3.27m 13'0" x 10'9"

Bed 3

3.57m x 2.25m 11'9" x 7'5"

Bed 4

4.69m x 2.25m 15'5" x 7'5"





Key features

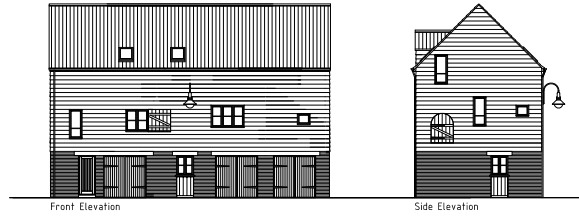
- Open-plan kitchen/lounge/dining room
- Family bathroom

2 bedroom home

The computer generated image (CGI) has been created from an imaginary viewpoint within an open space area. Its purpose is to give a feel for the development, not an accurate description of each property. The CGI shows a typical Taylor Wimpey home of this type, but there may be variances from site to site. External materials, finishes, landscaping and the position of garages, (where provided) may vary throughout the development. Homes may also be built handed (mirror image). Please enquire for further details.

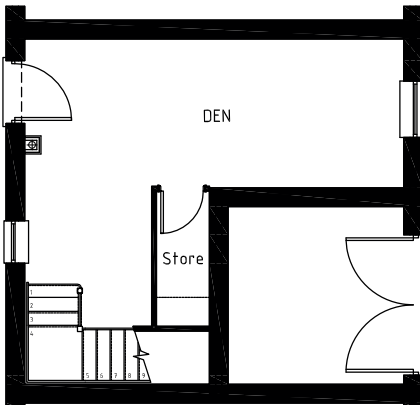
taylorwimpey.co.uk

Barn – Plot 126 & 127



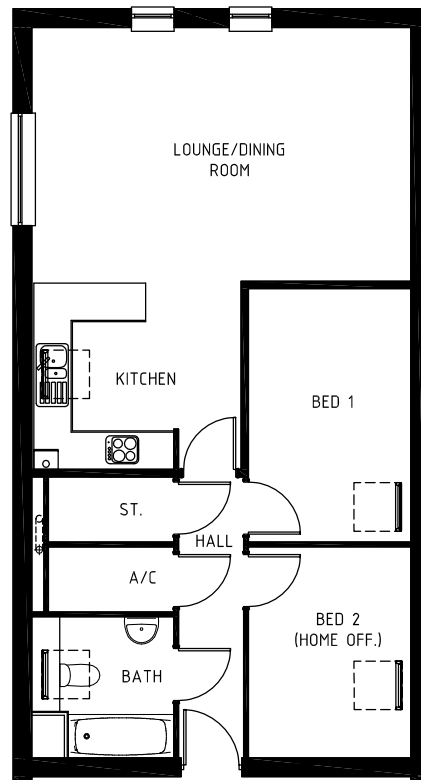
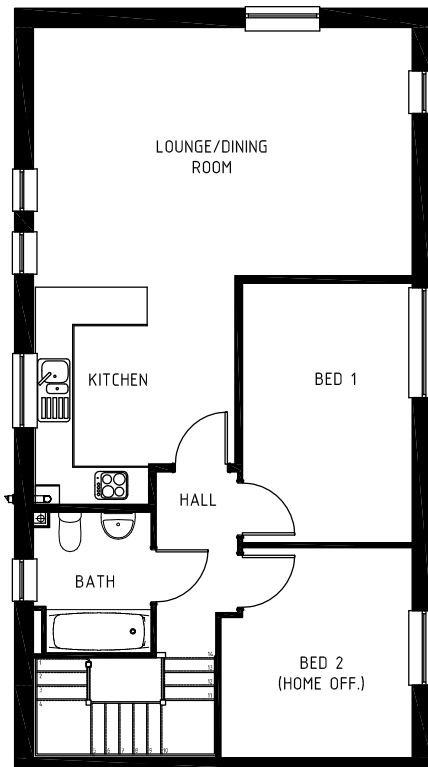
Ground/First Floors – Plot 126

- Den**
6.05m x 4.60m 19'10" x 15'1"
- Kitchen/Lounge/Dining Room**
7.66m x 6.05m 25'1" x 19'10"
- Bed 1**
4.18m x 2.71m 13'9" x 8'11"
- Bed 2**
3.36m x 3.06m 11'0" x 10'0"



Ground Floor – Plot 127

- Kitchen/Lounge/Dining Room**
7.09m x 6.05m 23'3" x 19'10"
- Bed 1**
4.08m x 2.59m 13'5" x 8'6"
- Bed 2**
3.37m x 2.59m 11'1" x 8'6"



The floor plans depict a typical layout of this house type. For exact plot specification, details of external and internal finishes, dimensions and floor plan differences consult your Sales Executive.
All dimensions are + or - 50mm and floor plans are not shown to scale. TW0X121/May 2010



Key features

- Kitchen with door to rear garden
- Spacious lounge with French doors to rear garden
- Dining room with bay window
- En-suite to bed 1

3 bedroom home

The computer generated image (CGI) has been created from an imaginary viewpoint within an open space area. Its purpose is to give a feel for the development, not an accurate description of each property. The CGI shows a typical Taylor Wimpey home of this type, but there may be variances from site to site. External materials, finishes, landscaping and the position of garages, (where provided) may vary throughout the development. Homes may also be built handed (mirror image). Please enquire for further details.

taylorwimpey.co.uk

Kirkstone – Plot 128



Ground Floor

Kitchen

4.36m x 2.52m 14'1" x 8'3"

Lounge

5.07m x 3.09m 16'8" x 10'2"

Dining Room

3.20m x 2.80m 10'6" x 9'2"

First Floor

Bedroom 1

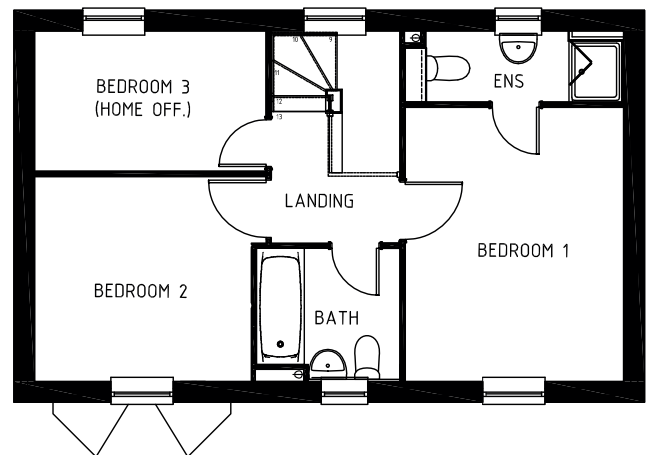
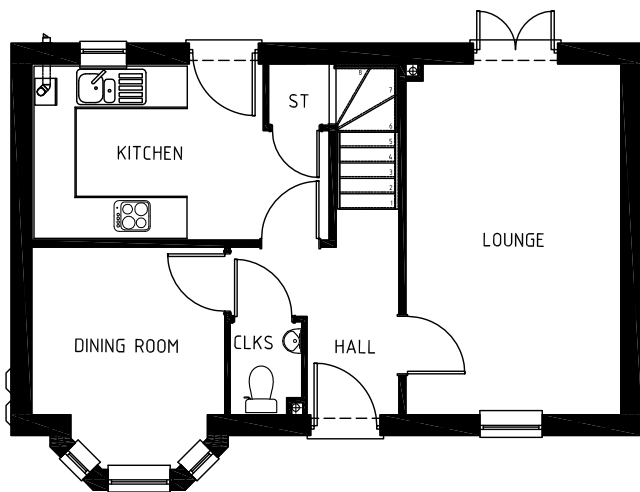
3.98m x 3.17m 13'1" x 10'5"

Bedroom 2

3.36m x 2.97m 11'0" x 9'9"

Bedroom 3

5.36m x 2.03m 11'0" x 6'8"





Key features

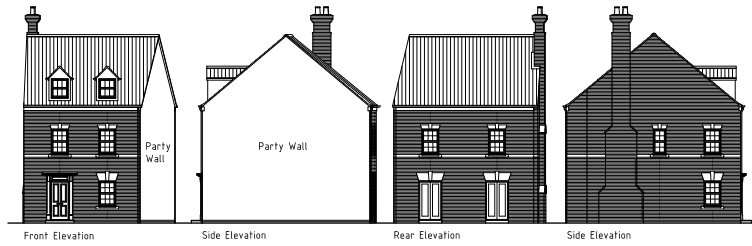
- Spacious lounge with French doors to rear garden
- Dining room with French doors to rear garden
- En-suite to bed 1

3 bedroom home

The computer generated image (CGI) has been created from an imaginary viewpoint within an open space area. Its purpose is to give a feel for the development, not an accurate description of each property. The CGI shows a typical Taylor Wimpey home of this type, but there may be variances from site to site. External materials, finishes, landscaping and the position of garages, (where provided) may vary throughout the development. Homes may also be built handed (mirror image). Please enquire for further details.

taylorwimpey.co.uk

Kirkstone – Plot 130



Ground Floor

Kitchen	3.15m x 3.11m	10'4" x 10'3"
Lounge	4.28m x 4.06m	14'1" x 13'4"
Dining Room	4.06m x 2.80m	13'4" x 9'2"

First Floor

Bedroom 1	4.64m x 3.18m	15'3" x 10'5"
Bedroom 2	3.58m x 3.12m	11'9" x 10'3"
Bedroom 3	3.54m x 3.12m	11'4" x 10'3"

Second Floor

Bonus Room	7.40m x 5.87m	24'3" x 19'3"
-------------------	---------------	---------------

