



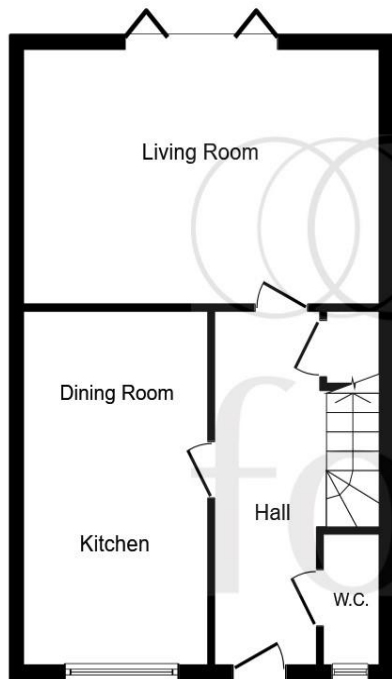
Woodlands Edge , High Street, Handcross, RH17 6BW

welcome to

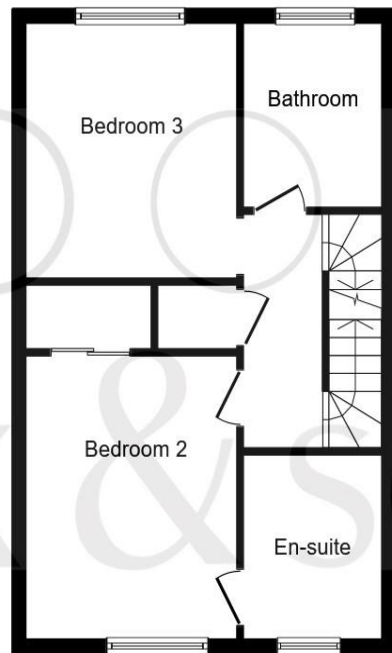
Woodlands Edge , High Street

Woodlands Edge, in the Beautiful sought after village of Handcross a select development of just eight - Three Double Bedrooms, high specification town houses backing on to glorious open countryside.

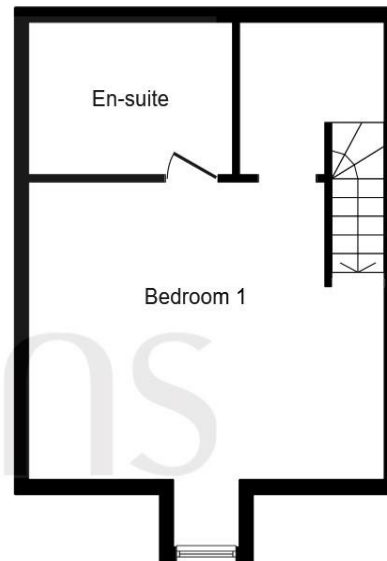




Ground Floor



First Floor



Second Floor

welcome to

Woodlands Edge , High Street

- Available with help to buy
- Kitchen With Fully Integrated Bosch Appliances
- Engineered Oak flooring to Entrance Hall & Kitchen/Diner
- Contemporary White Bathroom Suites with Ceramic Tiles
- En-suite Shower Rooms with 'Monsoon' Shower Heads

Tenure: Freehold EPC Rating: Awaited

price on application



Please note the marker reflects the postcode not the actual property

view this property online fox-and-sons.co.uk/Property/HHT105675

see all our properties on zoopla.co.uk | rightmove.co.uk | fox-and-sons.co.uk



Property Ref:
HHT105675 - 0008

1. MONEY LAUNDERING REGULATIONS Intending purchasers will be asked to produce identification documentation at a later stage and we would ask for your co-operation in order that there is no delay in agreeing the sale. 2. These particulars do not constitute part or all of an offer or contract. 3. The measurements indicated are supplied for guidance only and as such must be considered incorrect. Potential buyers are advised to recheck measurements before committing to any expense. 4. We have not tested any apparatus, equipment, fixtures or services and it is in the buyers interest to check the working condition of any appliances. 5. Where an EPC, or a Home Report (Scotland only) is held for this property, it is available for inspection at the branch by appointment. If you require a printed version of a Home Report, you will need to pay a reasonable production charge reflecting printing and other costs. 6. We are not able to offer an opinion either written or verbal on the content of these reports and this must be obtained from your legal representative. 7. Whilst we take care in preparing these reports, a buyer should ensure that his/her legal representative confirms as soon as possible all matters relating to title including the extent and boundaries of the property and other important matters before exchange of contracts.


fox & sons



01444 450105



haywardsheath@fox-and-sons.co.uk



115 South Road, HAYWARDS HEATH, West Sussex, RH16 4LR



fox-and-sons.co.uk