



OLD BARN
Churt, Farnham, Surrey



Old Barn

Old Barn Lane, Churt, Farnham, Surrey, GU10 2NA

An outstanding, period country house of immense character with a vaulted great hall, self-contained guest wing, long views and excellent leisure facilities, within the Surrey Hills area of Outstanding Natural Beauty and Great Landscape Value.



Historical note

Many of the undulating fields and woods on the eastern approaches to Churt were purchased from the Churt Estate of Lord Ashcombe in 1921 by the Prime Minister, David Lloyd George, who held office during the First World War from 1916 to 1922. Lloyd George built his house, Bron-y-de, and created his farm and estate with well established orchards and its own produce shop. Old Barn, then part of Mayhews Farm, was converted by Lloyd George's secretary, Frances Stevenson, whom, upon the death of his wife, he was to later marry in 1943. Lloyd George was created Earl Lloyd George of Dwyfor in 1945.



Location

(Approximate distances and times). Churt village 1 mile, Farnham 6.5 miles (Waterloo 54 minutes), Haslemere 6.5 miles (Waterloo 47 minutes), Guildford 13 miles, A3 2 miles, London 40 miles.

Summary of Accommodation

Principal Bedroom with En Suite Bathroom, 4/5 Further Bedrooms, 3 Further Bathrooms or Shower Rooms (1 En Suite), Vaulted Great Hall with Minstrels Gallery, Dining Room, Sitting Room, Study, Kitchen/Breakfast Room, Utility Room, 2 Cloakrooms, Cellar, (including accommodation arranged as a ground floor guest wing, annexe or office suite), Grounds with Landscaped Garden and Stone Terraces and Features, 2 Paddocks with Views of About 4.5 Acres (1.8 Ha)

In All about 5.9 Acres (2.3 Ha).

For Sale Freehold

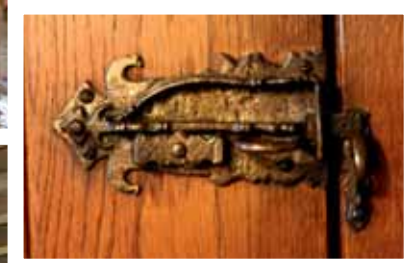
Viewing:

Strictly by appointment with the vendor's sole agents:



Farnham Country House Department
4 Castle Street, Farnham, Surrey GU9 7HS
Telephone: 01252 718149 Fax: 01252 733628
Email: farnhamcountryhouse@hamptons-int.com
www.hamptons.co.uk





Situation

Old Barn lies within a most attractive, scattered rural community with many period farms or holdings, in an elevated position enjoying long views across the countryside of the Wey Valley. Churt is a popular village with shops, church, nursery and first schools, inns, garage and a bus service connecting the old country towns of Farnham and Haslemere. Both towns have a good commuter service to Waterloo, shopping, educational and cultural facilities. This countryside on the Surrey/Hampshire border is within the protected area designated as the Surrey Hills Area of Outstanding Natural Beauty and Great Landscape Value within the Green Belt. There is excellent walking and riding country, much in the ownership of the National Trust including Frensham Ponds and Commons close by. There are several golf courses including Hindhead, Hankley Common and Liphook. Road links are excellent to London and airports.

Description

Old Barn was originally part of Mayhews Farm, an ancient working farm and was converted in about 1928 by the late Countess Lloyd George. The external oak frame above the garden doors into the Sitting Room carries the initials F S – 1928. The original multi-bay oak framework of the barn was carefully preserved and sympathetically enhanced by the inclusion of oak joinery. Hearsay and no more relates that many of the older items of joinery came from the House of Commons, including linen fold panelling and doors with, in addition, a handsome stone wellhead. Also that the cupboard in the Hall, now used for coats was Lloyd George's telephone cubicle for private use. The accommodation is arranged around a lofty, vaulted hall with massive timber frames including roof beams and braces, with a charming gallery across one end and a nearly 11' wide stone framed inglenook. There is flexibility of use with a ground floor self-contained guest wing, annexe or office suite with external access. Elevations are of stone and brick with black and white timber framing tile hanging and leaded light windows, largely double glazed, under a tiled roof.

Old Barn is a house of most appealing, mellow character with a welcoming atmosphere, complemented by colourful gardens with extensive stone landscape features and paddocks.

Gardens and grounds

An extensively stocked, colourful blend of the formal and informal, arranged with Yorkstone features and with leisure facilities and paddocks beyond. Old Barn is approached by a curving drive bordering the paddocks and leading to a wide gravelled, partly stone walled forecourt. An iron gate through a stone flagged and tiled canopy opens to a sunken lawn and stone paved garden, framed on three sides by old stone walls and with stone paving at a higher level with,



beyond, a gate to Green Lane. The sunken garden is studded with varieties of flowering shrubs and bush roses and is arranged around a stone **Wellhead Feature**. From the forecourt, a tile capped gate, with an inset former millstone, opens to a sheltered garden with lawns and shrubs around a stone **Lily Pool** overlooking the paddock and with distant views. Approached from the house is a broad **Yorkstone Terrace** extending around the west side with steps to a sunken garden, surrounded by shrub borders and with lawns. Beyond is a full size **Hard Tennis Court** and within a lawned setting is the heated **Swimming Pool**. Grassy walks surround the garden with groupings of shrubs and trees including old apples and with gates into two stock fenced

Paddocks of about 4.5 acres (1.8 ha). **Extending in all to about 5.9 acres (2.3 ha).**

Services

Mains water and electricity. Shared private drainage. Oil central heating with separate circuits. Propane gas heating to the swimming pool.

Local authority

Waverley Borough Council. Tel: 01483 523333.

Directions

From London and Guildford, take the A3 southwards, bypassing Godalming. After the exit signed Milford and Elstead, and upon a long straight stretch of dual carriageway, take the slip road left signed Bowlhead Green and Thursley, which crosses the opposite carriageway. Proceed through Thursley village and through the valley beyond and at the next T-junction turn left. Proceed through Pitch Place and onto the T-junction opposite the Pride of the Valley hotel. Turn left and in a short distance take the first fork right into Hale House Lane. In about ¼ of a mile take the first turning left into Old Barn Lane. The drive to Old Barn is in about ¼ of a mile on the right towards the top of the lane.

From Farnham, take the A287 Hindhead road passing Frensham Pond and continue to the centre of Churt village. At the crossroads by the Crossways Inn, turn left into Hale House Lane and after about ¾ of a mile turn right into Old Barn Lane and proceed as above.

For clarification, we wish to inform prospective purchasers that we have prepared these sale particulars as a general guide. We have not carried out a detailed survey, nor tested the services, appliances and specific fittings. Room sizes are approximate and rounded: they are taken between internal wall surfaces and therefore include cupboards/shelves etc. Accordingly, they should not be relied upon for carpets and furnishings. Formal notice is also given that all fixtures and fittings, carpeting, curtains/blinds, kitchen equipment and garden ornaments and furniture, whether fitted or not, are deemed removable by the vendor unless specifically itemised within these particulars. PMA/GJLB/PAO/FNC060047.





HAMPTONS
INTERNATIONAL