



Vista
Tarrant Gunville
Blandford Forum, Dorset, DT11 8JS

**Christopher
Batten**

01202 841171
www.christopherbatten.com

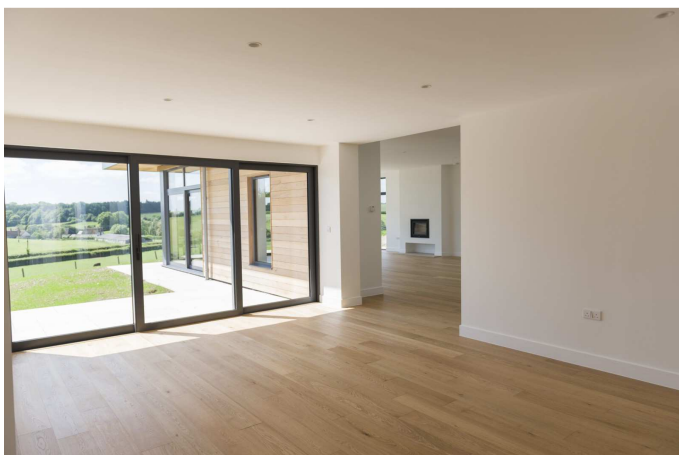


An absolutely stunning, contemporary, split level, 5 bedroom detached country home situated in an idyllic rural valley within the Cranborne Chase (Area of Outstanding Natural Beauty,) with magnificent views over the surrounding farmland from all principal rooms.

The hamlet of Stubhampton is located about a mile from the village of Tarrant Gunville which has a farm shop, a village hall and a parish church. The market town of Blandford Forum is within 15 minutes' drive, and the city of Salisbury and coastal towns of Poole and Bournemouth are all easily accessible by road.

Originally built in the 1960s as a single storey dwelling, Vista was substantially extended and refurbished in 2016, and now provides superb living accommodation largely arranged on one level and extending to over 3600 square feet. This individual property has been refurbished to a very high standard of specification and will appeal to purchasers seeking a stylish home with every modern convenience.

Viewings by appointment
Price Guide £1,195,000 Freehold





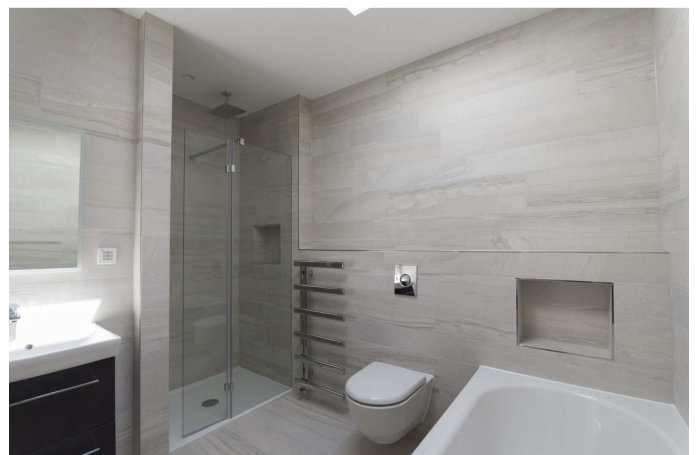
Features include fully tiled bathrooms, Calor gas under floor heating (with sunken tanks,) LED downlighters throughout, oak internal doors with stainless steel fittings, and wide oak boarded flooring to principal areas of the ground floor, and carpeting. There is private drainage.

The layout is very open, beginning with the impressive reception/dining hall which has sliding glass screens to the garden. A showpiece of this outstanding property is a stunning kitchen/living room with 7 full height glass screens and sliders leading to a sandstone terrace and giving a magnificent vista over the rolling fields of the Tarrant Valley. The living area has a Jetmaster log burner.

The kitchen has contemporary high gloss units, walk-in larder, quartz work surfaces and a range of built-in appliances including double oven, microwave, coffee machine, integrated fridge and freezer, dishwasher, touch-control induction hob, and extractor.

Off the dining hall, there is a cloakroom, a boot room and utility room. On the main level, there are 2 bedrooms (one of which has an en suite shower room.)

From the dining hall, a short flight of stairs leads up to the master bedroom suite (with an en suite bath/shower room,) bedroom 4 and a family bath/shower room.





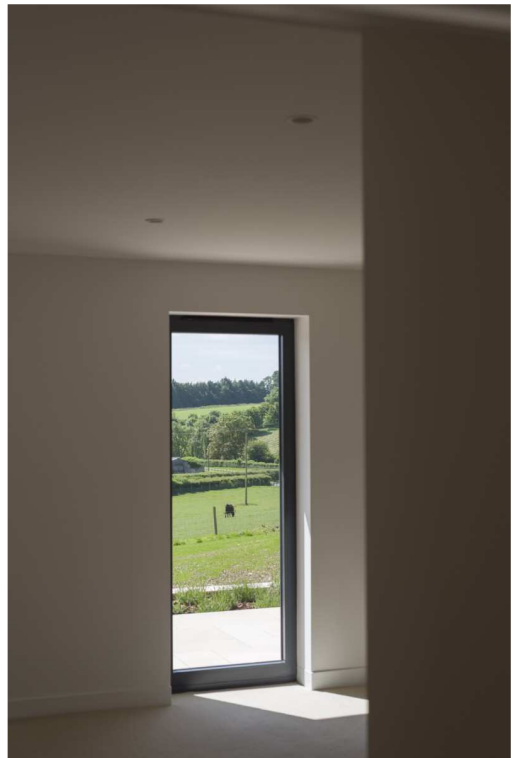
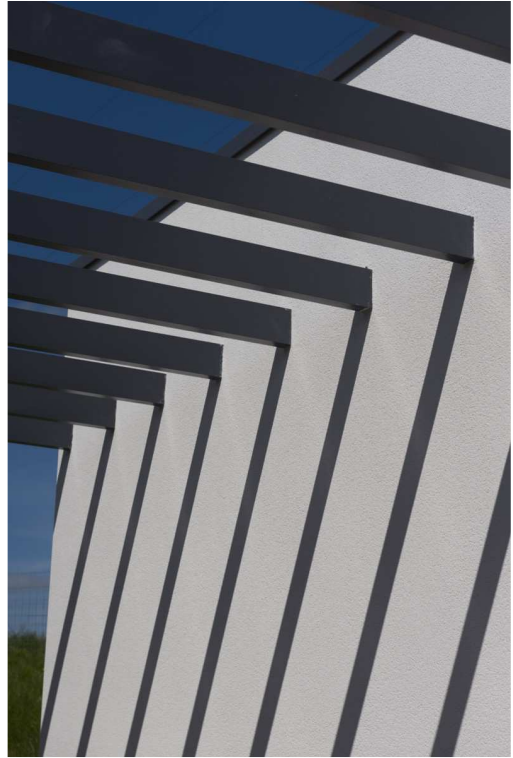
Steps lead down to bedroom 5 which has an adjacent shower room and an interlinking study.

A tarmac slipway leads to a winding white stoned driveway and a courtyard and turning area. There is a detached double garage (with remote opening doors.) The fully landscaped gardens are enclosed by post-and-wire fencing, with sandstone terracing, pathways and planters.

DIRECTIONS: From Blandford, follow the A354 towards Salisbury. Proceed through Pimperne. On entering Tarrant Hinton, turn left and proceed through the village. Continue ahead through the village of Tarrant Gunville, and on to Stubhampton. Take the first turning on the right, and Vista can be found about 200m along, on the left hand side.

COUNCIL TAX: 'G'.

EPC RATING: 'C'.



Vista, Tarrant Gunville

Approximate Gross Internal Area :- 342 sq m / 3685 sq ft

Garage Approximate Gross Internal Area :- 34 sq m / 373 sq ft



15 East Street, Wimborne, Dorset BH21 1DT
 Tel: (01202) 841171/2 Fax: (01202) 842714
 Email: properties@christopherbatten.com



www.christopherbatten.com

'CONSUMER PROTECTION FROM UNFAIR TRADING' REGULATIONS: The agents have not tested any apparatus, equipment, fixtures and fittings or services, and so cannot verify that they are in working order or fit for the purpose. The buyer is advised to obtain verification from his or her solicitor. References to the tenure of the property are based on information supplied by the vendor. The agents have not had sight of the title documents. The buyer is advised to obtain verification from his or her solicitor. Applicants are advised to check the availability of a property before travelling any distance to view.