

# Glan Vyrnwy, Llanymynech

Gross internal area (approx.)

Total = 393 sq m (4235 sq ft)

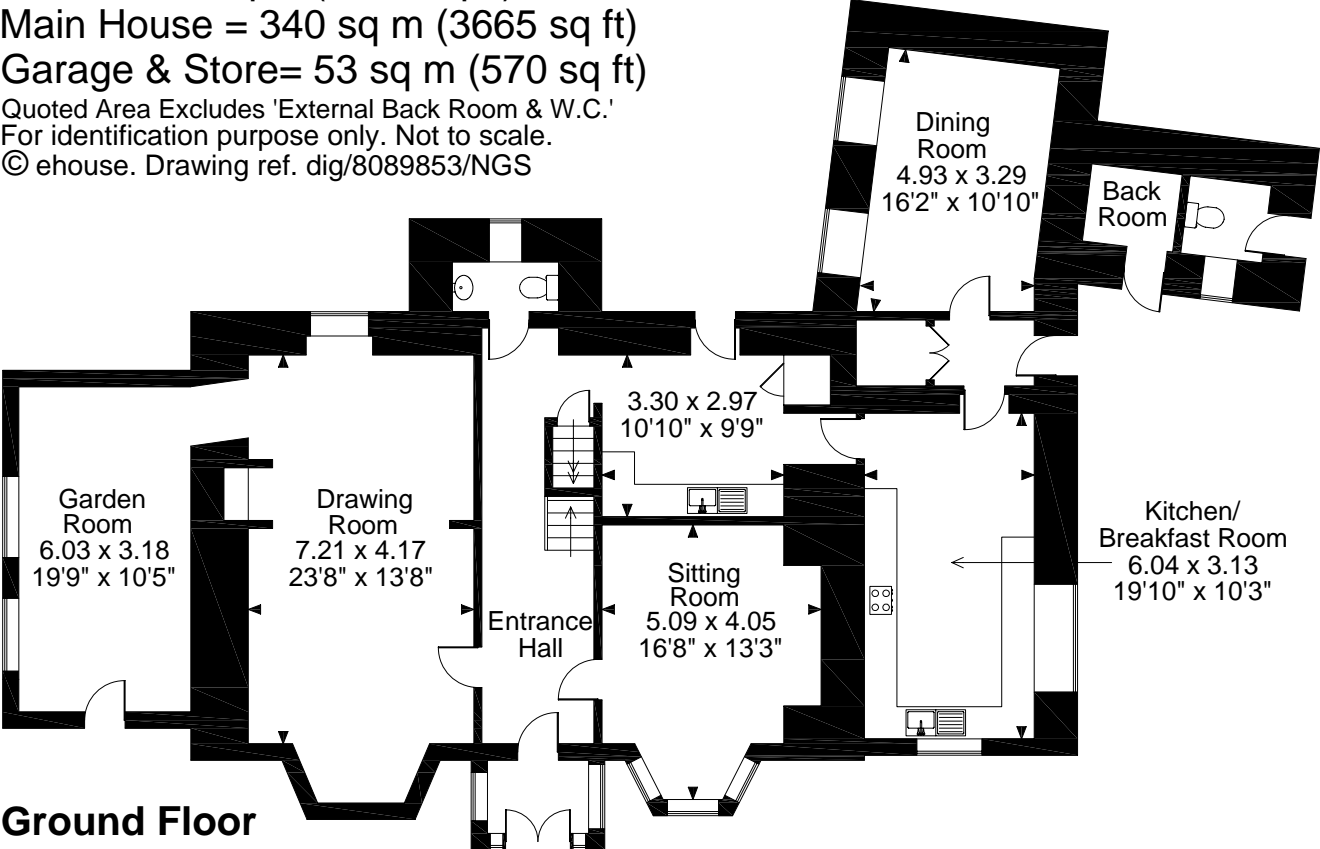
Main House = 340 sq m (3665 sq ft)

Garage & Store = 53 sq m (570 sq ft)

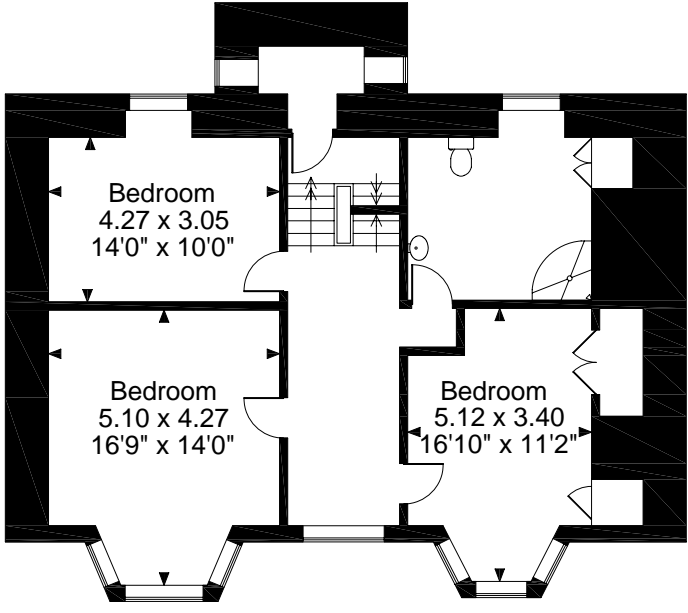
Quoted Area Excludes 'External Back Room & W.C.'

For identification purpose only. Not to scale.

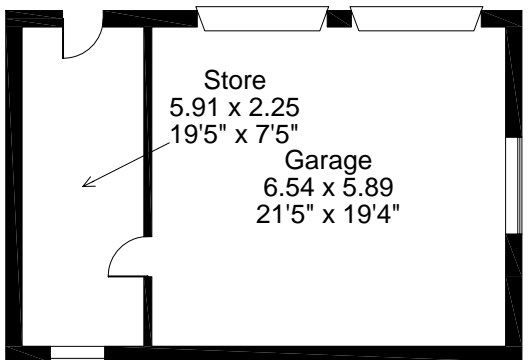
© ehouse. Drawing ref. dig/8089853/NGS



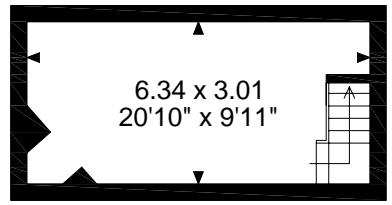
**Ground Floor**



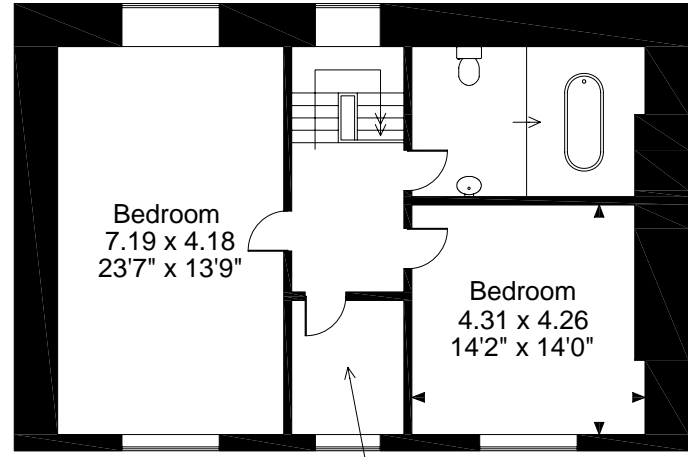
**First Floor**



**Garage**



**Cellar**



**Second Floor**

Study  
2.49 x 2.11  
8'2" x 6'11"