



Choumert Road, SE15

3 Bedrooms | 4 Receptions | 2 Bathrooms | £1,550,000

Choumert Road, SE15

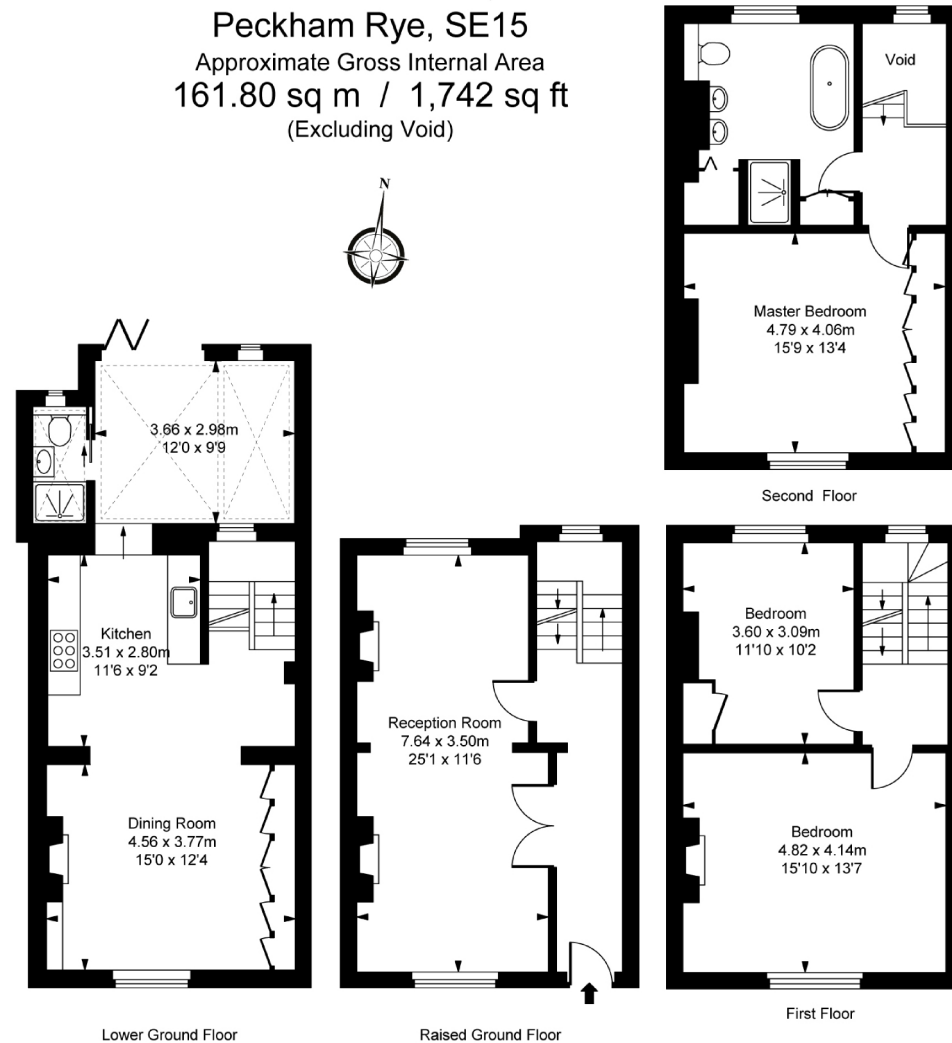
£1,550,000 | Freehold

This incomparable Georgian home assures contemporary luxury of the highest standard, underpinned by a captivating sense of period charm. It enjoys a prestigious Choumert Road setting, an easy stroll to transport links and local shops and restaurants. Internally the home is arranged over a spacious 1750 square feet and contains three double bedrooms, four reception rooms, two bathrooms and also a large open plan kitchen and dining area. A low maintenance, rear courtyard garden is perfect for all year entertaining and relaxing.

Choumert Road sits just off Bellenden Road which provides on all levels - independent boutique clothes and furniture shops, a pharmacy, greasy spoon, hairdressers, book shop, dry cleaners all just a few moments away. Check out the Victoria Inn and Montpelier pubs for a well-deserved drink, friendly service and good pub food. Then for your more up-market foodies why not try the Begging Bowl (if you can get in), Anderson & Co., Petitou and the new Italian Artusi which has glowing reviews. You also have Rye Lane which is Peckham's main high-street for much more shopping needs, Frank's roof top Campari bar, The Bussey Building and London's most successful independent cinema - the Peckham Plex.

Peckham Rye Station is 0.2 miles away with direct trains to Blackfriars, London Bridge, Victoria, St Pancras International and is also on the East London Overground Line with direct trains to Shoreditch High Street, Canada Water and Clapham Junction. The property is offered to the market chain free. EPC rating: C

Choumert Road,
Peckham Rye, SE15
Approximate Gross Internal Area
161.80 sq m / 1,742 sq ft
(Excluding Void)



Gareth James
PROPERTY

129 Bellenden Road, London, SE15 4QY
t - 020 7732 4330 e - Sales@GarethJames.com

www.GarethJames.com

G916

f Gareth James Property t @garethjamesproperty i @garethjamesproperty

ILLUSTRATION FOR IDENTIFICATION PURPOSES ONLY
ALL MEASUREMENTS AND AREA FIGURES SUPPLIED BY OTHERS. ACCURACY IS NOT GUARANTEED.
THIS PLAN MUST NOT BE REPRODUCED BY ANY OTHER PERSON WITHOUT PERMISSION

IMPORTANT: we would like to inform prospective purchasers that these sales particulars have been prepared as a general guide only. A detailed survey has not been carried out, nor the services, appliances and fittings tested. Room sizes should not be relied upon for furnishing purposes and are approximate. If floor plans are included, they are for guidance only and illustration purposes only and may not be to scale. If there are any important matters likely to affect your decision to buy, please contact us before viewing the property. G916