



Parkside
Knightsbridge, SW1X

CHESTERTONS
Knightsbridge & Belgravia



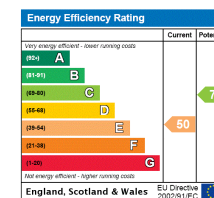


A well-presented second floor apartment in this highly sought after building. The flat, which offers 3 bedroom suits, has views over Hyde Park from the master bedroom and reception room.

Parkside is well located for Harrods, Hyde Park and the internationally renowned boutiques of Sloane Street. With glorious views directly over Hyde Park, the apartment benefits from 24 hour portorage and a balcony.

- Park Views
- Balcony
- Lift
- 24 Hour Portorage

£5,550,000 Asking Price
Leasehold approx. 985 years



Tenure: Leasehold Approx. 985 years remaining
Service Charge: Approx. £29,300 per annum including reserve fund

Chestertons Knightsbridge & Belgravia Sales

31 Lowndes St
Knightsbridge
London
SW1X 9HX

sales.knightsbridge@chestertons.com

020 7235 8090

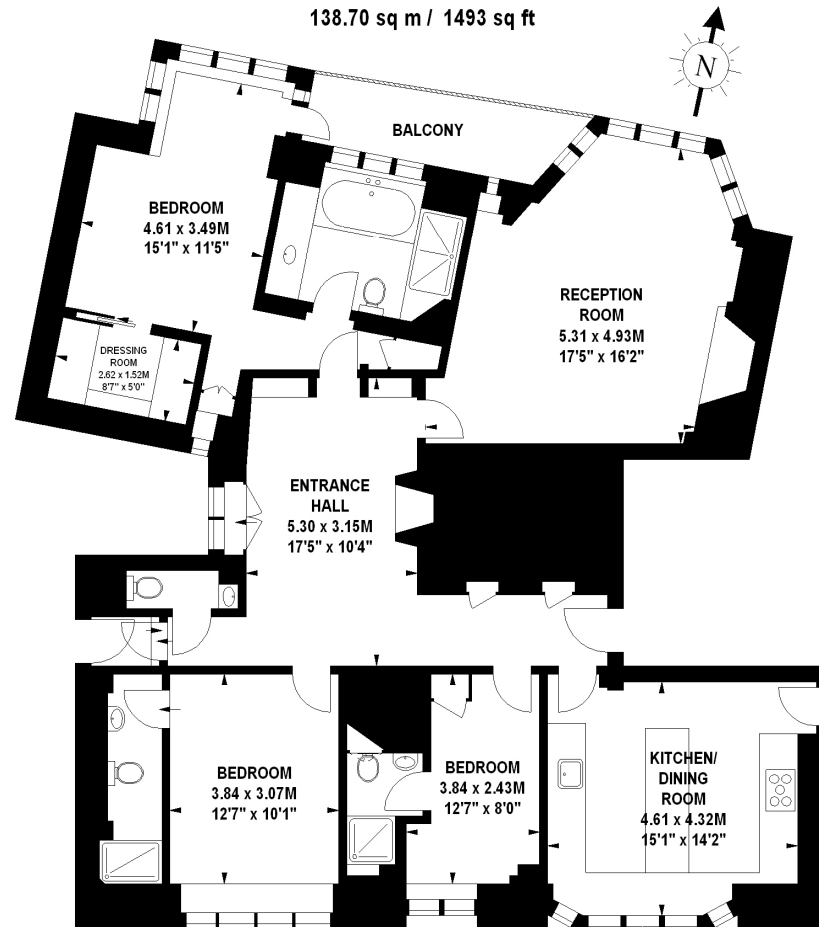
chestertons.com



Parkside, SW1

Approximate gross internal area

138.70 sq m / 1493 sq ft



Second Floor

The floor plan is not to scale and measurements and areas shown are approximate and therefore should be used for illustrative purposes only.

The plan been prepared in accordance with the RICS code of Measuring Practice and whilst we have confidence in the information produced, it must be not be relied on.

If there is any aspect of particular importance, you should carry out or commission your own inspection of the property.

Copyright of FeaturePRO.

Chesterton Global Ltd trading as Chestertons for themselves and for the vendor of this property whose agents they are, give notice that (i) these particulars do not constitute any part of an offer or contract, (ii) all statements contained within these particulars are made without responsibility on the part of Chestertons or the vendor, (iii) whilst made in good faith, none of the statements contained within these particulars are to be relied upon as a statement or representation of fact, (iv) any intending purchasers must satisfy themselves by inspection or otherwise as to the correctness of each of the statements contained within these particulars, (v) the vendor does not make or give either Chestertons or any person in their employment any authority to make or give representation or warranty whatsoever in relation to this property. Wide angle lenses may be used. ©Copyright Chestertons | Chesterton Global Ltd | Registered Office 7th Floor, St Magnus House, 3 Lower Thames Street, London EC3R 6HD Registered Company Number 05334580.