



Leinster Gardens

Bayswater, W2

£6,250,000 Asking Price

HMO comprising 6 x 1 bedroom apartments, 9 x studios & 1 x bedsit. The current annual rental income is £291,820. Leinster Gardens is a fantastic location offering residents access to a wealth of local amenities, shops, restaurants & transport links.

CHESTERTONS
Hyde Park



Leinster Gardens

Bayswater, W2

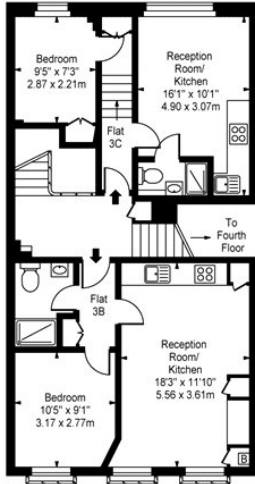


Tenure: Freehold

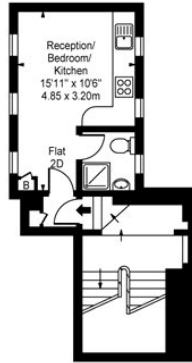
Chestertons Hyde Park Sales

40 Connaught Street
London
W2 2AB
sales.hydepark@chestertons.com
020 7298 5900
chestertons.com

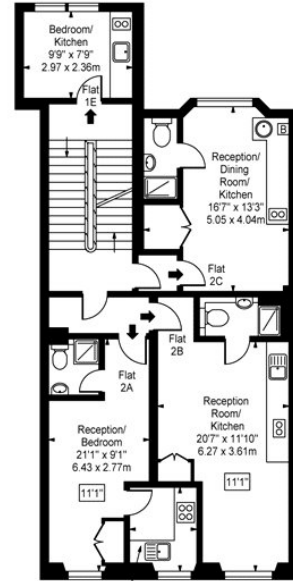
Leinster Gardens, W2



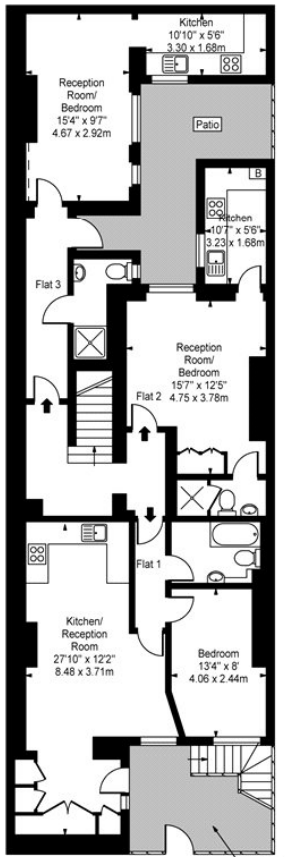
Third Floor



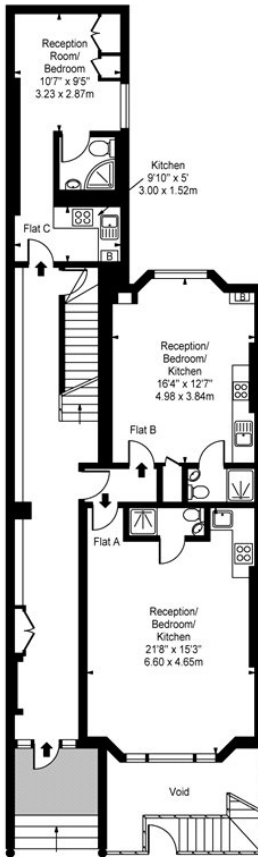
Second Floor Mezzanine



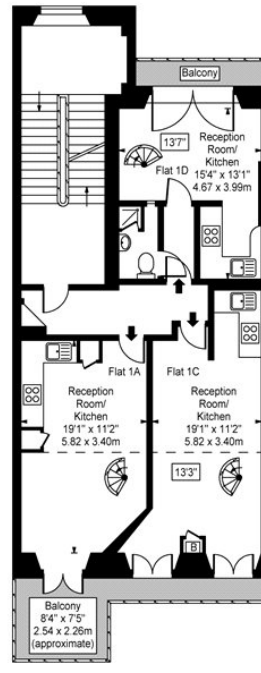
Second Floor



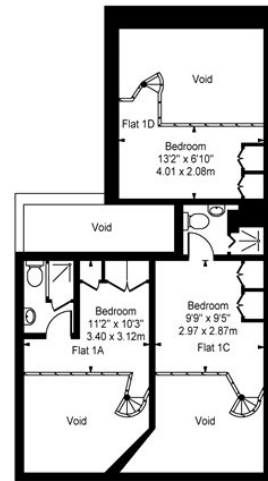
Lower Ground Floor



Ground Floor



First Floor



First Floor Mezzanine

Approx Gross Internal Area 5759 Sq Ft - 535.01 Sq M

(Excluding Void)

For Illustration Purposes Only - Not To Scale
www.goldiens.co.uk
Ref. No. 005845M

Chesterton Global Ltd trading as Chestertons for themselves and for the vendor of this property whose agents they are, give notice that (i) these particulars do not constitute any part of an offer or contract, (ii) all statements contained within these particulars are made without responsibility on the part of Chestertons or the vendor, (iii) whilst made in good faith, none of the statements contained within these particulars are to be relied upon as a statement or representation of fact, (iv) any intending purchasers must satisfy themselves by inspection or otherwise as to the correctness of each of the statements contained within these particulars, (v) the vendor does not make or give either Chestertons or any person in their employment any authority to make or give representation or warranty whatsoever in relation to this property. Wide angle lenses may be used. ©Copyright Chestertons | Chesterton Global Ltd | Registered Office 7th Floor, St Magnus House, 3 Lower Thames Street, London EC3R 6HD Registered Company Number 05334580.