

CONNAUGHT PLACE HYDE PARK W2



CONNAUGHT PLACE

HYDE PARK W2

A SUBSTANTIAL LATERAL
APARTMENT SITUATED WITHIN
A GRADE II LISTED STUCCO
FRONTED PERIOD PROPERTY
OVERLOOKING HYDE PARK.

Decorated to a very high standard in the 18th Century French manner, this apartment exudes elegant grandeur throughout.

Upon entry via lift into the private, checkerboard marble tiled entrance lobby, one is greeted by a bespoke monochrome Murano glass chandelier and spectacular double-sided wrought iron mirrored entrance doors.







SPECIFICATION

5 bedrooms | 7 bathrooms | 4 grand reception rooms | Spacious kitchen | Views across Hyde Park

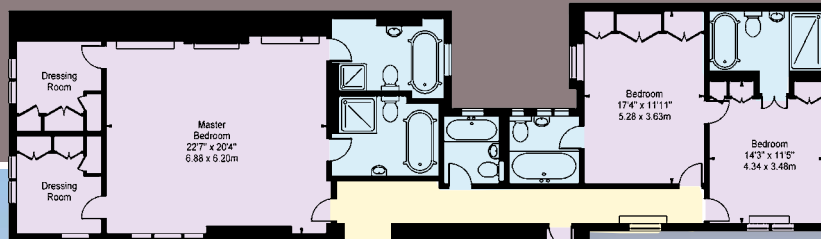


Offering the latest in home technology, this resplendent apartment features air conditioning and Lutron controlled audio visual lighting systems throughout. The property comprises four stunning panelled reception rooms with oak parquet flooring, looking directly into Hyde Park, in addition to a spectacularly well-proportioned dining kitchen and grand lobby areas.



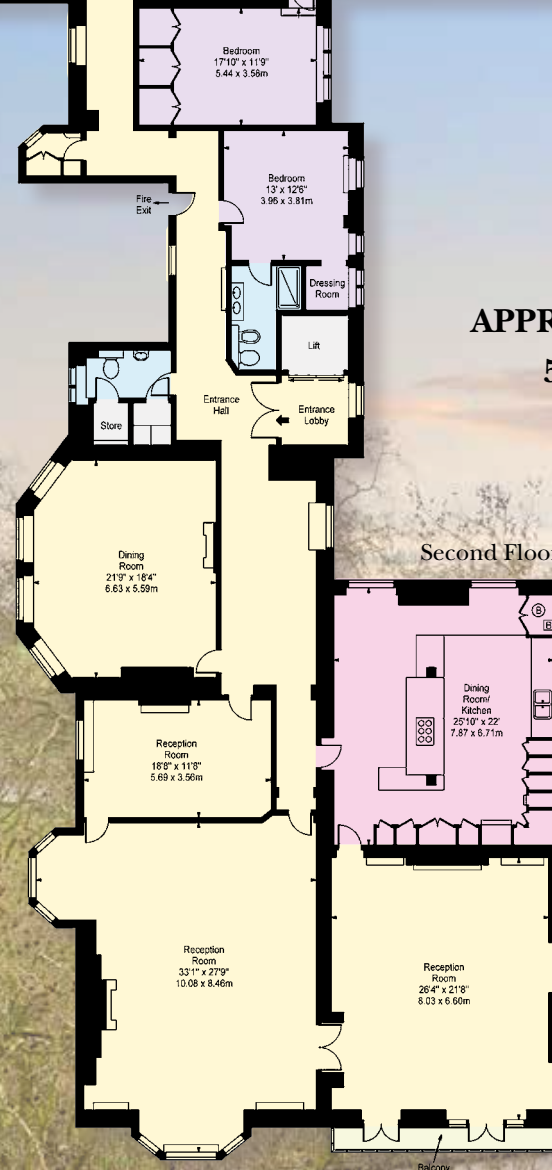
The master bedroom suite overlooks Hyde Park and includes his and her dressing rooms and his and her bathrooms. The four remaining bedrooms, all with ample custom designed wardrobes, offer individuality and three of these benefit from marble lined en suite bathrooms with porcelain suites including walk-in power showers, free standing baths and bespoke mirrored vanity units.





LOCATION

Adjacent to Hyde Park, London's largest and most famous Royal Park, Connaught Place is situated in a highly sought-after Central London location. Close to the extensive shopping and exclusive restaurants provided by Oxford Street and Connaught Village, Connaught Place is also close to the theatres and culture of London's West End. The City and Paddington Mainline station, including the Heathrow Express, are highly accessible via Marble Arch (Central line) underground station. Notting Hill, Mayfair and Kensington are all close by.



APPROX GROSS INTERNAL AREA
5,433 SQ FT - 504.73 SQ M
(EXCLUDING LIFT)



TERMS

Tenure Leasehold, approximately 124 years remaining
Local Authority City of Westminster
Guide Price £15,000,000



Important Notice

1. Particulars: These particulars are not an offer or contract, nor part of one. You should not rely on statements by Knight Frank LLP in the particulars or by word of mouth or in writing ("information") as being factually accurate about the property, its condition or its value. Neither Knight Frank LLP nor any joint agent has any authority to make any representations about the property, and accordingly any information given is entirely without responsibility on the part of the agents, seller(s) or lessor(s). 2. Photos etc: The photographs show only certain parts of the property as they appeared at the time they were taken. Areas, measurements and distances given are approximate only. 3. Regulations etc: Any reference to alterations to, or use of, any part of the property does not mean that any necessary planning, building regulations or other consent has been obtained. None of the services or appliances have been tested and no warranty is given or is to be implied that they are in working order. A buyer or lessee must find out by inspection or in other ways that these matters have been properly dealt with and that all information is correct. 4. VAT: The VAT position relating to the property may change without notice. Particulars dated March 2016. Photographs dated March 2016.

Knight Frank LLP is a limited liability partnership registered in England with registered number OC3059934. Our registered office is 55 Baker Street, London, W1U 8AN, where you may look at a list of members' names.

Brochure by **capital group** 020 8671 5448

CHESTERTONS
Hyde Park

020 7298 5900
 sales.hydepark@chestertons.com

**Knight
 Frank**

Hyde Park
 020 7871 5060
KnightFrank.co.uk