

Woodside Farm
Epping

LAWLOR^S
ELITE



LOCATION LOCATION LOCATION



Woodside Farm

Ground Floor

Kitchen/Breakfast Room
Utility Room
Formal Reception
Dining Room
Orangery
Cloakroom

First Floor

Master Bedroom
En-Suite
Walk In Wardrobe
Bedroom Two
En-Suite
Bedroom Three
Bedroom Four
Family Bathroom

Exterior

Ample Parking
Triple Garage
Separate Annex
Stables
Ornate Pond
Separate Paddock

LOCATION

London City Airport - 21 miles

Heathrow Airport - 52 miles

Gatwick Airport - 56 miles Underground

Station Theydon Bois - 8 miles

Motorway Junction M11 J7 - 12 miles



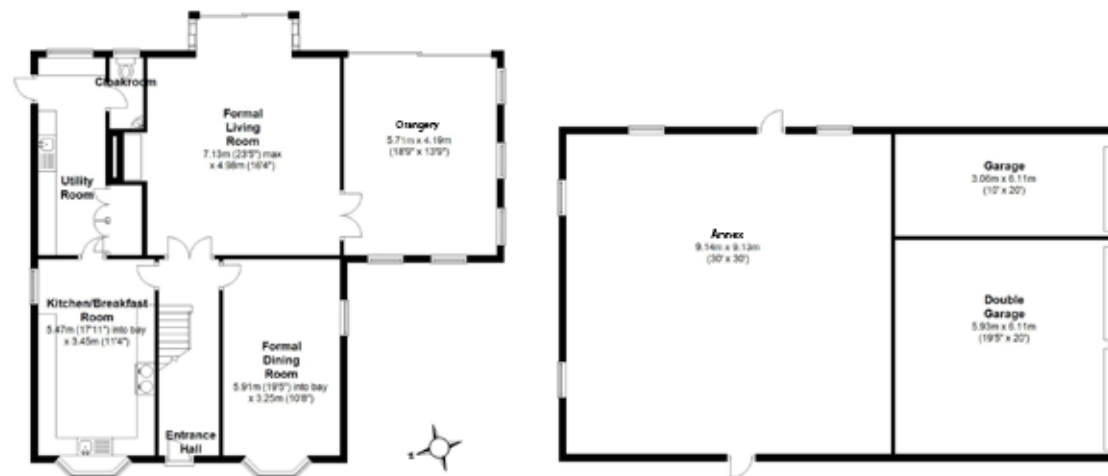
EPPING



DETAILS

Ground Floor

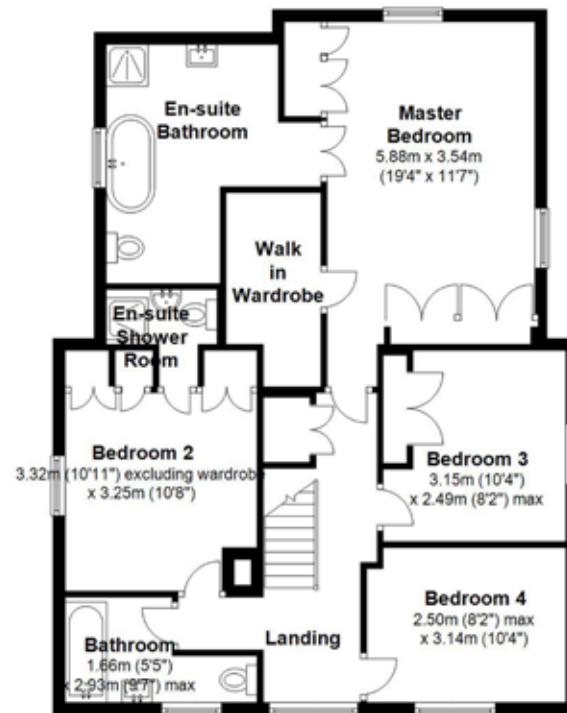
Ground Floor accommodation comprises of large entrance hall leading to formal dining room, large reception room with feature fireplace, modern orangery, fully fitted kitchen with separate dining area, large utility room and cloakroom.





First Floor

The first floor offers master bedroom with double doors leading to balcony over the front aspect, walk in wardrobe leading to en-suite bathroom with double doors leading to a rear balcony, two further double bedrooms and family bathroom.





Exterior

To the front of the property you have the large sweeping on off driveway providing ample parking with the addition of a triple garage, to the rear of the garage you have the separate annex, independently you have separate stables.

To the rear of the property you have the large sweeping grounds with the ornate fish pond, mature trees, paddock and update drainage facilities.





LAWLOR^s

ELITE

165 High Road, Loughton,
Essex IG10 4LF
T 0208 418 1890

Agents Notes

With approximate measurements these particulars have been prepared in good faith by the selling agent in conjunction with the vendor(s) with the intention of providing a fair and accurate guide to the property. However, they do not constitute or form any part of an offer or contract nor may they be regarded as representations, all interested parties must verify themselves their accuracy. No tests or checks have been carried out in respect of heating plumbing electrical installation or any type of appliance which may be included.