



Fort Crescent, Margate
£210,000

parkland
estates

STUNNING APARTMENT IN THE HEART OF MARGATE!! Parkland Estates are thrilled to bring this beautiful two bedroom property to the market for sale. Located right on the sea front in Margate, with your front door opening onto Margate's famous Winter Gardens, the Turner Contemporary art gallery is just at the end of the road and the train station is within a mile, offering direct speed links into London. On entering the apartment you are greeted with a spacious open plan kitchen and living space done to a very modern and contemporary style. There is a spacious double bedroom to the front boasting sea views, with the master bedroom to the rear with its own en-suite shower room and the family bathroom is done to a beautiful level of decor to really finish the place off. Offered part furnished this property is one that should be on the top of everyones viewing lists as it will generate a lot of interest. In our opinion the apartment would make for a brilliant home, a fantastic holiday home or even a weekend retreat! Viewings on this property are strictly by appointment so call Parkland Estates today to arrange your accompanied viewing.

The traditional seaside holiday began in Margate some 200 years ago and the town has been welcoming visitors ever since. Pioneer of the quintessentially English seaside traditions it has also been a centre of popular culture from the early 19th century onwards. It was home to JMW Turner, one of Britain's most popular artists who took inspiration from the area's amazing quality of light and another famous artist, Tracey Emin, grew up in the town and is a frequent visitor.



Communal Entrance

Via secure communal front door through to communal hallway

Communal Hallway

Entrance To Apartment

Private entrance to the apartment, door opens through to the open plan living area.

Lounge / Kitchen 20'5 x 19'00 (6.22m x 5.79m)

Immaculately presented living area

having sash bay window to front boasting stunning sea views. The kitchen area comprises wall and base shelving with complimenting worktops, stainless steel basin with mixer tap, integrated oven, gas hob with extractor over and space for white goods. Double doors to bedroom.

Master Bedroom 15'10 x 12'2 (4.83m x 3.71m)

Beautiful master bedroom having sash window to rear, freestanding copper bath

tub with mixer tap, door to en-suite.

En-suite 6'8 x 4'7 (2.03m x 1.40m)

Having walk in shower, low level WC, hand wash basin with mixer tap, sash window to rear.

Second Bedroom 10'6 x 9'1 (3.20m x 2.77m)

Good size second bedroom having sash window to front with sea views.

Main Bathroom 6'7 x 6'1 (2.01m x 1.85m)

Comprising bath with shower over, low level WC and hand wash basin with mixer tap.

Agents Notes

None of the statements contained in these particulars as to this property are to be relied on as statements or representations of fact. No appliances have been tested.

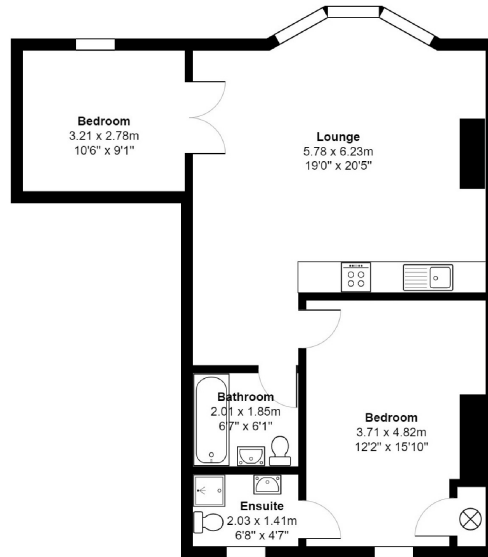


131 Northdown Road, Cliftonville, Kent, CT9 2QY

T: 01843 230430

cliftonville@parklandestates.co.uk

www.parklandestates.co.uk



Total Area: 67.4 m² ... 725 ft²

All measurements are approximate and for display purposes only

