

RIDGEWOOD HOUSE

BLACKHILLS • ESHER • KT10



RIDGEWOOD HOUSE

ESHER • KT10

***An elegant family house set in beautifully
maintained gardens and situated in an
exclusive private location***

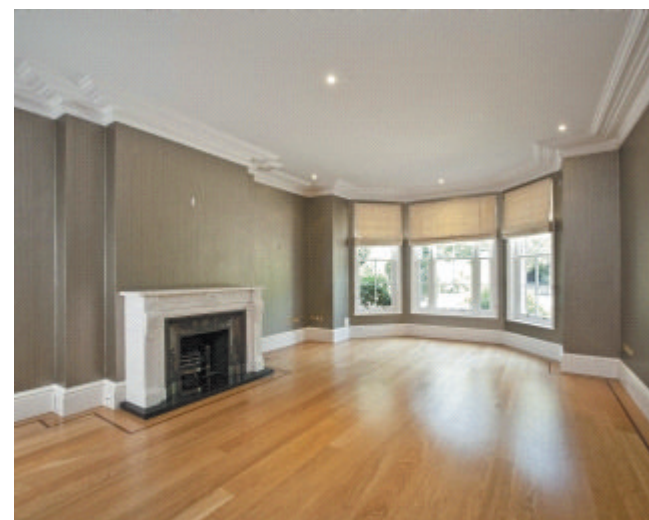
Galleried entrance hall • Reception hall • Cloakroom
Drawing room • Dining room • Family room
Kitchen/ breakfast room • Study • Utility room • Bathroom

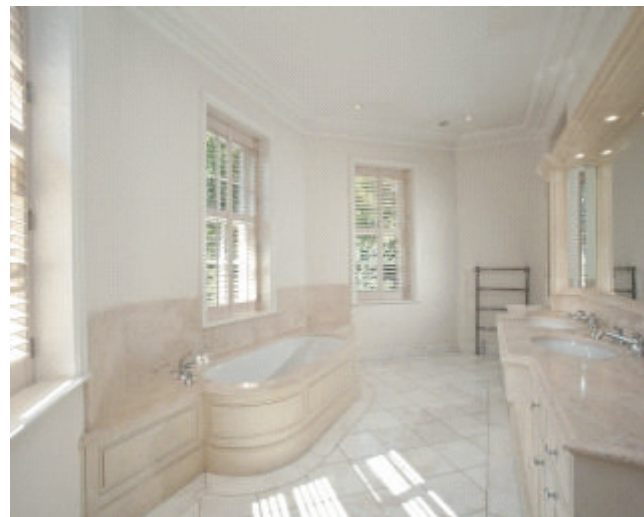
Master bedroom with twin en suites
and dressing room • Five further bedroom suites

Triple garaging • Outdoor swimming pool

Cobham 2.5 miles • Central London 18 miles
A3 3miles • M25 (J10) 5 miles
(All distances are approximate)

These particulars are intended only as a guide and must not be relied
upon as statements of fact. Your attention is drawn to the Important
Notice on the last page of the text.





Ridgewood House

The house was built by Heritage in 2004 and provides many features such as solid oak doors, high ceilings and ornate cornices.

Leading from the galleried octagonal entrance hall are the principal reception rooms including the double aspect drawing room with attractive fireplace, dining room and family room. The bespoke kitchen/breakfast room has a range of wall and base units, granite worktops and a central island.

A grand staircase leads to the first floor and a master bedroom suite with "his and her" en suite bathrooms and dressing room. There are a further five bedroom suites.

ESHER

Ridgewood House is situated within one of Esher's most exclusive private, gated roads just a short distance from the town centre with its range of shops, restaurants and boutiques.



Schools: Schooling in the area is superb with the Claremont Fan Court School within walking distance, the Esher Church School, the ACS International School and Danes Hill in Oxshott to name a few.



Leisure: There is a cinema in Esher High Street and the renowned Sandown Racecourse is on Portsmouth Road. Claremont Park and Painshill Park are also nearby offering excellent gardens and walks.



Restaurants: Esher High Street has a variety of international restaurants and bars.



Shopping: There is a wide range of boutiques, general shops and a supermarket in Esher with a wider selection of high street names in nearby Kingston Upon Thames.



Travel: The M25 (J10) and the A3 are a short distance away giving access to central London, Heathrow and Gatwick Airports. The nearby Claygate Station has a regular train service to London Waterloo.



Approximate Gross Internal Floor Area 793.7 sq.m./8,543 sq.ft.

This plan is for guidance only and must not be relied upon as a statement of fact. Attention is drawn to the Important Notice on the last page of the text of the Particulars

