

CAPITAL WHARF

WAPPING • E1W



CAPITAL WHARF

WAPPING • E1W

A stunning three bedroom penthouse with panoramic views over the Thames towards Tower Bridge.

Entrance hall • Reception/dining room • Master bedroom with en suite bathroom • Second bedroom with en suite shower room • Third bedroom • Guest bathroom • Kitchen • 2 balconies • Terrace • 24hr portorage • Parking

Price on application

Tenure • Leasehold

Council tax • London Borough of Tower Hamlets



These particulars are intended only as a guide and must not be relied upon as statements of fact. Your attention is drawn to the Important Notice on the last page of the text.



Capital Wharf, Wapping E1W

Description

Arranged over two floors this beautiful, south facing apartment offers excellent natural light and open space throughout with access to a large, private riverside roof terrace of 721 sq ft (67sq m) with views over the Thames to Tower Bridge, and two separate balconies.

Located on the 6th & 7th floors of this sought after block, the apartment benefits from a large reception room with high ceilings, access to the balcony, raised viewing area and a good sized spiral staircase leading to the roof terrace. The master bedroom has access to the terrace and is also serviced by a dressing area and 4 piece en suite bathroom.

Location

Capital Wharf has the use of on site gym facilities and 24 hour concierge, the building is located on Wapping High Street, located within easy reach of the amenities of St. Katharine Docks and transport links available from Wapping, and Tower Hill (District and Circle lines) & Gateway Stations (DLR).

Tenure

Leasehold with 980 years remaining.
Service charge: Approximately £9,824 per annum.
Ground rent: £150 per annum

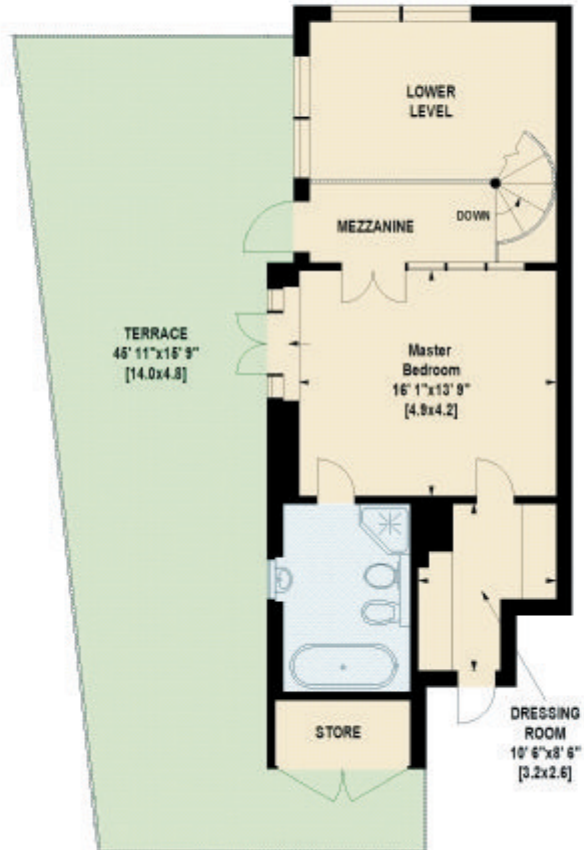


CAPITAL WHARF, E1W

Approximate Gross Internal Area : 171 Sq. metres
1841 Sq. feet
Excluding Void



SIXTH FLOOR



SEVENTH FLOOR



020 7480 6848

**1 Wapping High Street
Wapping E1W 1BH**

wapping@knightfrank.com

Energy Efficiency Rating		
Current	Potential	
<small>Energy Efficiency Rating Legend</small> A (92-100) Green B (81-91) Light Green C (69-80) Yellow-Green D (55-68) Yellow E (39-54) Orange F (21-38) Red-Orange G (1-20) Red		
75	81	
<small>Costs less to run - saves money</small> EU Directive 2002/91/EC		

Important Notice 1. Particulars: These particulars are not an offer or contract, nor part of one. You should not rely on statements by Knight Frank LLP in the particulars or by word of mouth or in writing ("information") as being factually accurate about the property, its condition or its value. Neither Knight Frank LLP nor any joint agent has any authority to make any representations about the property, and accordingly any information given is entirely without responsibility on the part of the agents, seller(s) or lessor(s). 2. Photos etc: The photographs show only certain parts of the property as they appeared at the time they were taken. Areas, measurements and distances given are approximate only. 3. Regulations etc: Any reference to alterations to, or use of, any part of the property does not mean that any necessary planning, building regulations or other consent has been obtained. A buyer or lessee must find out by inspection or in other ways that these matters have been properly dealt with and that all information is correct. 4. VAT: The VAT position relating to the property may change without notice. Particulars dated October 2016 Photographs dated October 2016. Knight Frank LLP is a limited liability partnership registered in England with registered number OC305934. Our registered office is 55 Baker Street, London, W1U 8AN, where you may look at a list of members' names.