

CAMERONS STIFF & Co.

Inc. QUEENS PARK PARTNERSHIP



Froggnal Rise, NW3

Arranged over the fourth floor of Gainsborough House, located in the prestigious Mount Vernon development, we offer a unique three bedroom/three bathroom flat providing close to 2000 sq ft of exceptional living space.

This stunning home benefits from a private terrace and a full south/west facing aspect giving an abundance of natural sunlight through the day and early evening with spectacular views over Central London. Offering fantastic and well laid out living space, the home has been distinctively presented to a specific taste.

The development benefits from 24 hour concierge, access to communal gym and swimming pool, beautiful landscaped gardens and secure underground parking.

Located in Froggnal Rise just a couple minutes walk to Hampstead Northern Line Station and close to a vast array of shops, restaurants, cafes on the High Street as well as Hampstead Heath.

- Unique 3 bedroom/3 bathroom flat
- 2 reception rooms, private terrace
- Wonderful views over London
- Just under 2000 sq ft, underground parking
- Prestigious mansion, 24 hour concierge
- Communal swimming pool & gym

£3,000,000 Leasehold

www.cameronsstiff.co.uk

CAMERONS STIFF & Co.

Inc. QUEENS PARK PARTNERSHIP



www.cameronsstiff.co.uk

You may download, store and use the material for your own personal use and research. You may not republish, retransmit, redistribute or otherwise make the material available to any party or make the same available on any website, online service or bulletin board of your own or of any other party or make the same available in hard copy or in any other media without the website owner's express prior written consent. The website owner's copyright must remain on all reproductions of material taken from this website.

CAMERONS STIFF & Co.

Inc. QUEENS PARK PARTNERSHIP

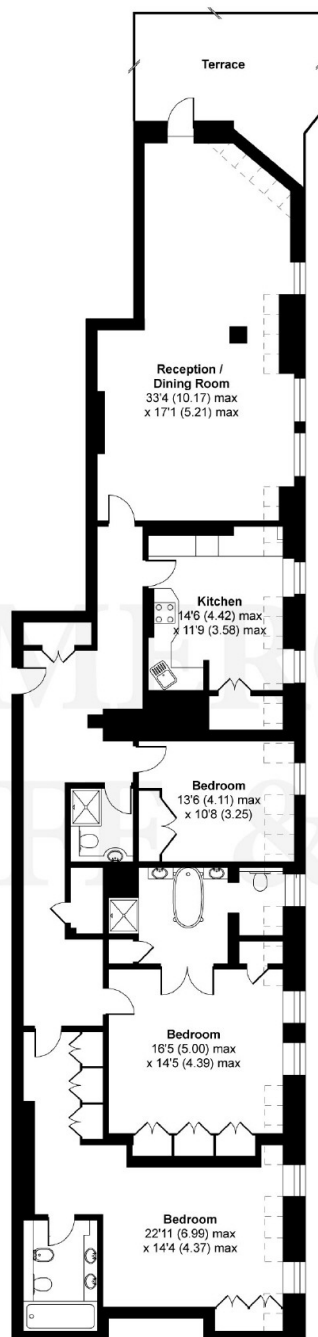


www.cameronsstiff.co.uk

Energy Efficiency Rating		Current	Potential
102-100	A		
91-101	B		
81-90	C		
71-80	D	56	70
61-70	E		
51-60	F		
1-50	G		
Not energy efficient - higher running costs			
England & Wales		EU Directive 2002/91/EC	

Frogнал Rise, London, NW3

APPROX. GROSS INTERNAL FLOOR AREA 1953 SQ FT 181.4 SQ METRES (EXCLUDES RESTRICTED HEAD HEIGHT)



Denotes restricted head height

Whilst every attempt has been made to ensure the accuracy of the floor plan contained here, measurements of doors, windows and rooms are approximate and no responsibility is taken for any error, omission or misstatement. These plans are for representation purposes only as defined by RICS Code of Measuring Practice and should be used as such by any prospective purchaser. Specifically no guarantee is given on the total square footage of the property if quoted on this plan. Any figure given is for initial guidance only and should not be relied on as a basis of valuation.

Copyright nichecom.co.uk 2018 Produced for Camerons Stiff & Co REF : 245170

www.cameronsstiff.co.uk

275 Willesden Lane, London NW2 5JA T: 020 8459 1133 E: enquiries@cameronsstiff.co.uk

62 Salusbury Road, London, NW6 6NS T: 020 7328 2828