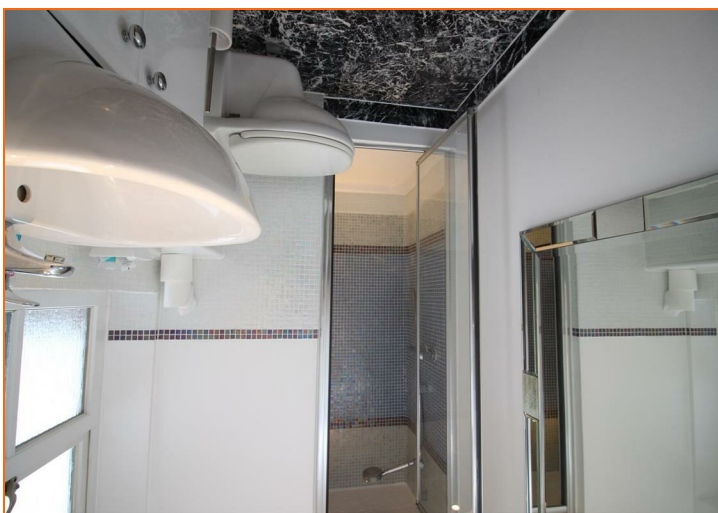
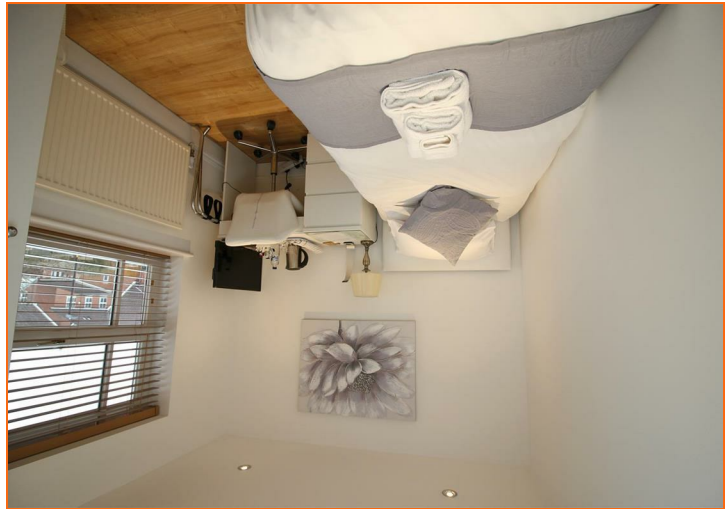
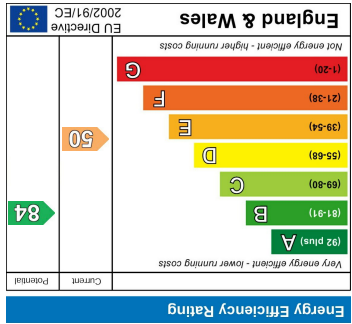
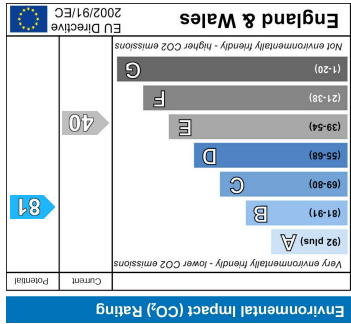


DISCLAIMER: Whilst we endeavour to make our sales details accurate and reliable they should not be relied on as statements or representation of fact and do not constitute an part of an offer. The seller does not make or give nor do we or our employees have the authority to make or give any representation or warranty in the relation of the property.

Please note: We have not tested any apparatus, equipment, fixtures or fittings or services and so cannot verify they are in working order, or fit their purpose, neither have we checked legal documents to verify freehold/leasehold status of the property. The measurements and distances are approximate only. We would strongly recommend that all the information which we provide is verified by yourself on inspection and also by your conveyancer or surveyor, especially where statements have been made by us to the effect that the information provided has not been verified.



44 Northbourne Road, St Andrews Ridge, Swindon, Wiltshire, SN25 4YE  
**£450,000**

dewhurst & co  
 estate agents

## 44 Northbourne Road, St Andrews Ridge, Swindon, Wiltshire, SN25 4YE

Offered to the market with No Onward Chain and situated in the ever popular and sought after location of St Andrews Ridge in North Swindon, is this immaculate and modern four/five bedroom detached property built by Bryant Homes. The property offers an extensive amount of living space, including a self contained annex complete with modern kitchen and en-suite shower room within the open plan living/bedroom space. The accommodation comprises entrance hallway leading to sitting room, stunning open plan kitchen/dining room with modern kitchen and utility space, UPVC conservatory, bedroom five/study with shower, master bedroom with en-suite shower room, three further spacious bedrooms and a family bathroom. To the rear is a spacious garden with space to the side to build a single garage, parking to the front for C.3 vehicles.

The annex could achieve a potential monthly rental of £550pcm including bills.

