



Barry Road, SE22  
£1,550,000

020 8299 3721  
[pedderproperty.com](http://pedderproperty.com)

**pedder**





# In general

- Semi-detached Victorian house
- 5 large double bedrooms
- 3 Bathrooms (1 en-suite)
- Large reception room
- Stunning eat in kitchen
- Beautiful rear garden
- Underfloor heating
- Off street parking
- Sought-after location

# In detail

Pedder are delighted to present for sale this absolutely stunning, semi-detached, Victorian family home on Barry Road, East Dulwich.

This spacious property, which is in immaculate throughout, comprises of: 5 large double bedrooms (including a master with a dressing room & 1 en-suite), 2 additional modern bathrooms, a large reception room and a fantastic eat in kitchen/ family room.

Further benefits include beautiful rear garden, a separate utility room, underfloor heating, cellar and off street parking with space for two cars.

This lovely property is ideally situated in close proximity to the amenities of Lordship Lane and the Peckham Rye Common. Dulwich Village is also close by with its excellent schools, Picture Gallery and golf course.

Rail links to central London are from East Dulwich and Peckham Rye train stations. Internal viewing of this fine property is highly recommended.

EPC: E





# Floorplan

## Barry Road, SE22

Approximate Gross Internal Area

Cellar = 11.6 sq m / 125 sq ft

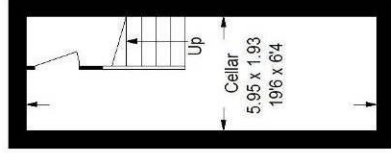
Ground Floor = 82.4 sq m / 887 sq ft

First Floor = 76.6 sq m / 825 sq ft

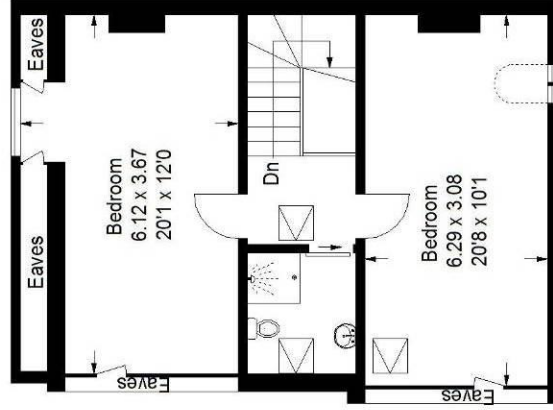
Second Floor (Excluding Eaves)

61.7 sq m / 566 sq ft

Total = 222.3 sq m / 2393 sq ft

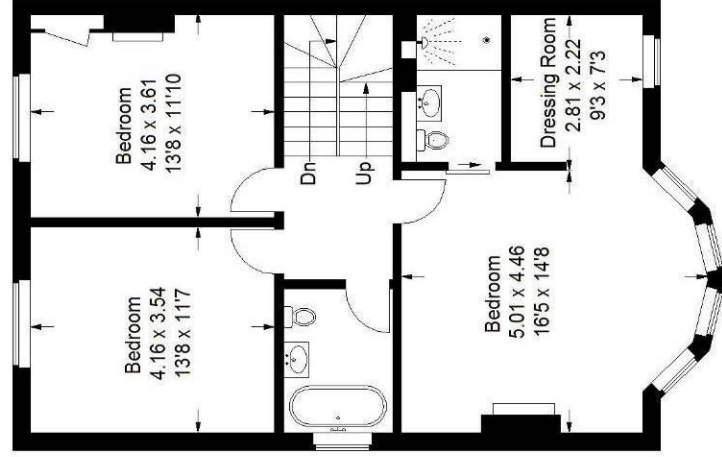


Cellar

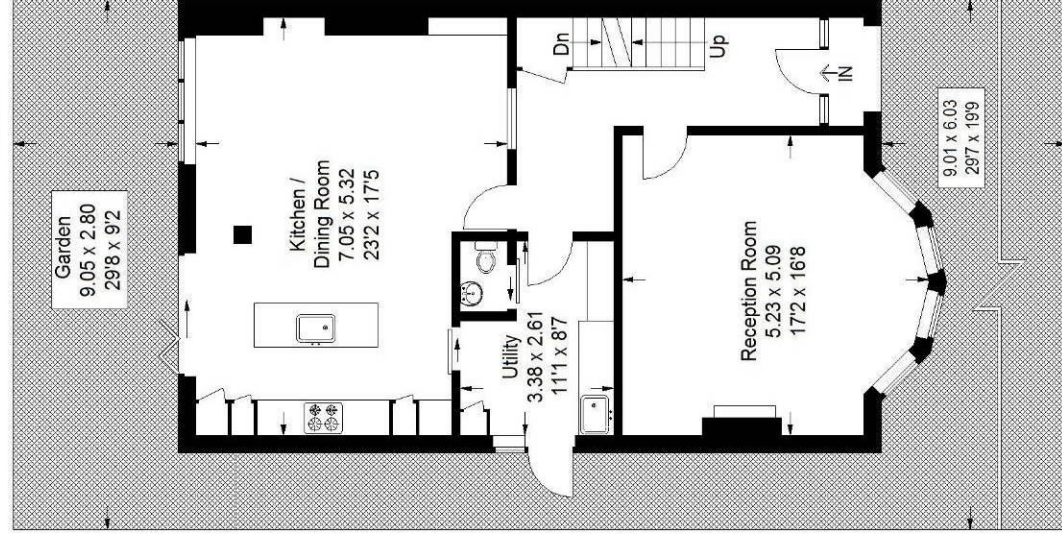


Second Floor

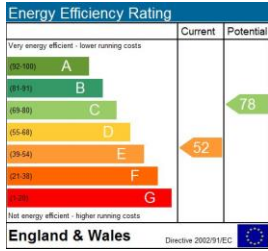
□ = Reduced headroom below 1.5 m / 5'0"



First Floor



Ground Floor



Pedder Property Ltd trading as Pedder for themselves and for the vendor/landlord of this property whose agents they are, give notice that (1) these particulars do not constitute any part of an offer or contract, (2) all statements contained within these particulars are made without responsibility on the part of Pedder or the vendor/landlord, (3) whilst made in good faith, none of the statements contained within these particulars are to be relied upon as a statement of representation or fact, (4) any intending purchaser/tenant must satisfy him/herself by inspection or otherwise as to the correctness of each of the statements contained within these particulars, (5) the vendor/landlord does not make or give either Pedder or any person in their employment any authority to make or give representation or warranty whatsoever in relation to this property.