



CHOLMELEY PARK
HIGHGATE VILLAGE N6
£5,500,000

JOINT AGENT

The ultimate in luxury living.

The skyline penthouse at Furnival House affords substantial lateral accommodation within this secure premium development and features exceptional outdoor terraces providing stunning 360 degree views from Highgate Village, one of the highest points in London.

Furnival House, a Grade II listed building by Joseph Henry Pitt, has been transformed into one of London's most luxurious lifestyle developments with hotel style concierge, 'deck level' swimming pool and spa area, fully fitted gym, secure parking and direct lift access to the penthouse.

The spacious contemporary living areas feature wooden flooring with a natural decor and the kitchen's impeccable finish make an ideal focal point.

The Penthouse with sumptuous carpets and flooded with natural light, provides a perfect sanctuary with sophisticated bathroom suites and possibly some of the best views in London from its private roof terraces.

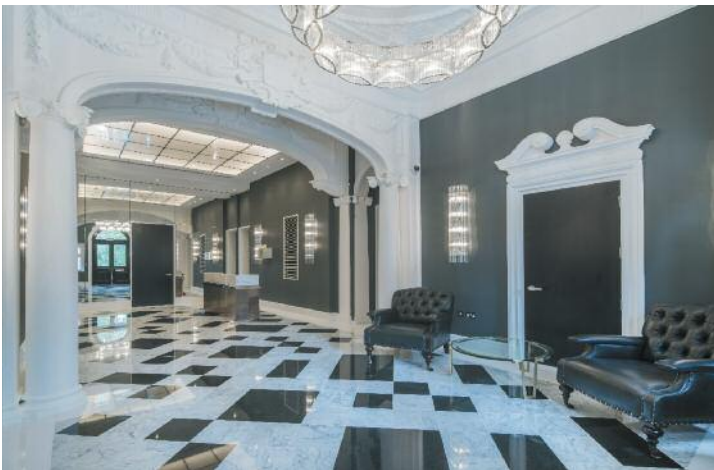
Individual viewings can be booked by prior arrangement.

3 Bedrooms – 3 En Suite Bathrooms – Living/Dining Room – Family Room/Study – Kitchen – Utility Room – Linen Room – Guest Cloakroom – Guest WC – Direct Lift Access – 1875 Sq Ft Of Private Terraces With Breathtaking Views From One Of The Highest Points In London – Communal Gardens – Swimming Pool & Spa Area – Fully Fitted Gym – Secure Parking – Concierge

020 8348 2341 N6@B-R.CO.UK

CHOLMELEY PARK
HIGHGATE VILLAGE N6
£5,500,000





CHOLMELEY PARK
HIGHGATE VILLAGE N6
£5,500,000





CHOLMELEY PARK
HIGHGATE VILLAGE N6
£5,500,000



The Skyline Penthouse

3 Bedrooms

Living/Dining Room	5.36m x 14.16m	17ft 8in x 46ft 6in
Kitchen	4.36m x 4.19m	14ft 4in x 13ft 9in
Family Room/Study	4.55m x 4.53m	14ft 11in x 14ft 10in
Master Bedroom	4.89m x 5.25m	16ft 1in x 17ft 3in
Bedroom 2	4.96m x 4.0m	16ft 3in x 15ft 6in
Bedroom 3	3.91m x 4.61m	12ft 10in x 15ft 2in
Total Area	280.9 sq m	3 024 sq ft
Terrace Area	174.2 sq m	1,875 sq ft



