



Belsize Village, NW3

£795,000

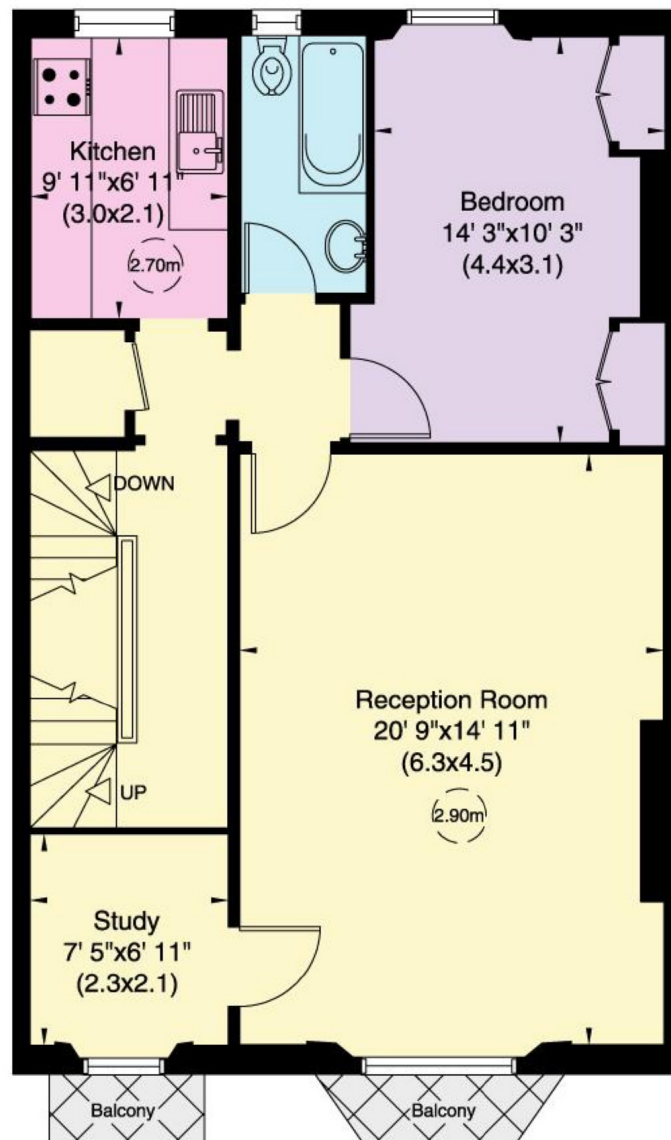
OIEO £795,000 A high ceiling first floor apartment set within an impressive Victorian residence (built 1867) set in the heart of Belsize Village. Approximate Area: 700 Sq Ft - 65 Sq M

Set within this highly sought after turning within easy walking distance of the excellent amenities that both Belsize Park and Hampstead Village provide. Whilst Swiss Cottage and Finchley Road underground stations are close at hand.

Features

Large Reception Room
Study/2nd Bedroom
In Need Of Updating
High Ceilings
Picture Windows
Excellent Location

Belsize Crescent, London, NW3



First Floor

Contact

To arrange a viewing call our office on the number below or visit our website.



Energy Rating: . We aim to make our particulars both accurate and reliable. However they are not guaranteed; nor do they form part of an offer or contract. If you require clarification on any points then please contact us, especially if you're traveling some distance to view. Please note that appliances and heating systems have not been tested and therefore no warranties can be given as to their good working order.