



PARK AVENUE
GOLDERS HILL NW11
£2,950,000

SOLE AGENT

Delightfully situated within a highly regarded and tranquil enclave yards from Golders Hill Park, a fine detached house built circa 1917 in the Arts and Crafts style providing spacious and elegant family accommodation in excess of 3000 sq ft with a secluded south-west facing garden, a roof terrace and off street parking for 2 cars.

The property has recently been the subject of an extensive refurbishment and modernisation programme and is now being offered in a 'ready to move in' condition.

5/6 Bedrooms – 4 Bathrooms (2 En Suite) – Lounge Hall – 2 Reception Rooms – Study Area – Kitchen – Utility Room – Guest WC – Roof Terrace – Front Garden – 60ft South West Facing Rear Garden – Off Street Parking

PARK AVENUE
GOLDERS HILL NW11
£2,950,000

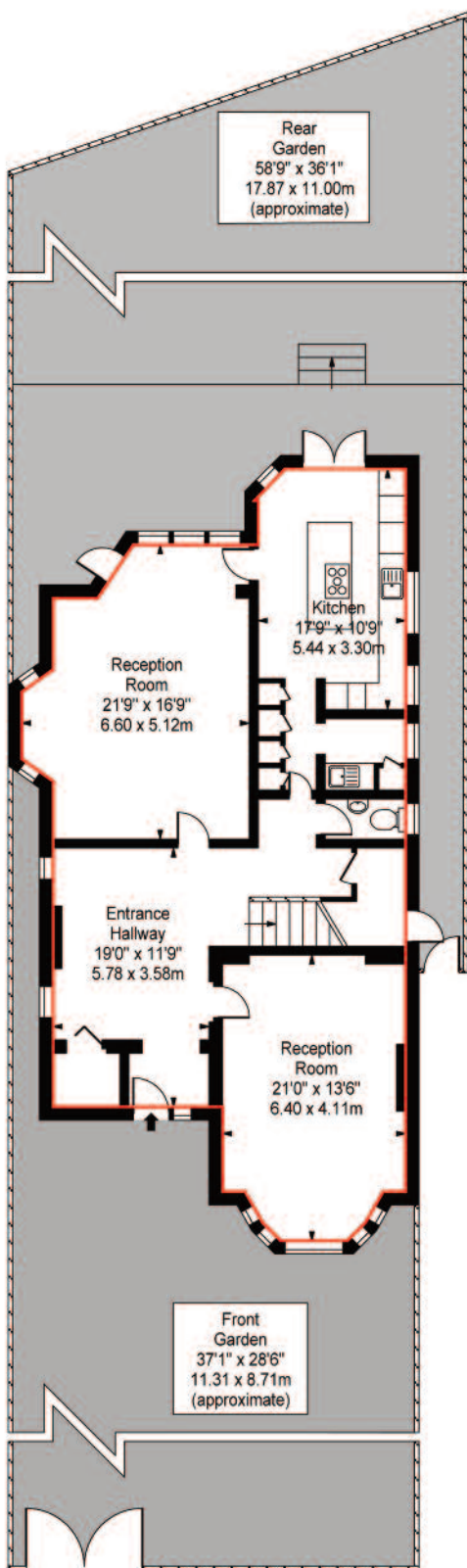




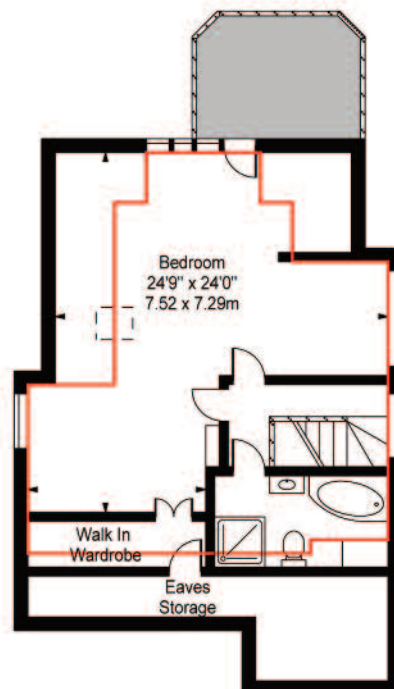
PARK AVENUE
GOLDERS HILL NW11
£2,950,000



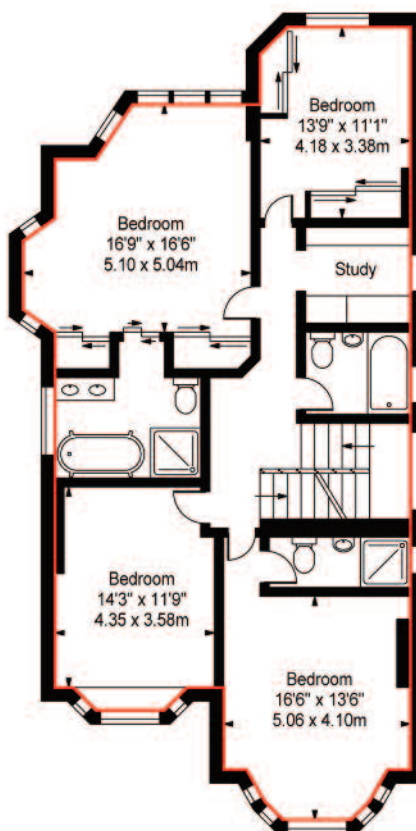
Park Avenue, NW11



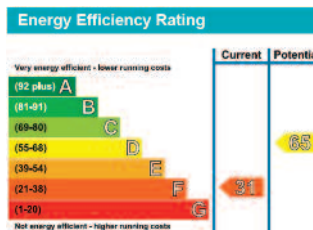
Ground Floor



Second Floor



First Floor



Approximate Square Footage Within Red Line **3057 Sq Ft - 284.01 Sq M**
 Approx Floor Area Including Restricted Heights **3347 Sq Ft - 310.93 Sq M**

For Illustration Purposes Only - Not To Scale Floor Plan by www.nogaphotostudio.com Ref: No.36358

This floor plan should be used as a general outline for guidance only. Any intending purchaser or lessee should satisfy themselves by inspection, searches, enquiries and full survey as to the correctness of each statement. Any areas, measurements or distances quoted are approximate and should not be used to value a property or be the basis of any sale or let.

